

*CBK Needlepoint Collection*  
*Stitch Guide*

Michele Noiset • “Penguin & Friend” • MN-PL 08



Stitch Guide by SuZy Murphy

# Penguin & Friend

## PENGUIN AND FRIEND

### SUPPLY LIST

#### RAINBOW GALLERY

##### Flair

- F514 - Pale Red Violet
- F516 - Dark Red Violet

##### Treasure Braid - 8 strand

- TR80 - White Pearl
- TR96 - Midnight Blue
- TR88 - Royal Blue
- TR85 - Black

##### Petite Treasure Braid

- PB10 - White Pearl

##### Panache

- PN02 - White
- PN15 - Ruby Red
- PN16 - Burgundy
- PN30 - Halloween Orange

##### Neon Rays

- N83 - Tangerine
- N81 - Nutmeg

##### Fuzzy Stuff

- FZ35 - Pale Blue
- FZ15 - White

##### Neon Rays+

- NP37 - Celery
- NP32- Spruce Green
- NP22 - Crimson
- NP26 - Burgundy

#### RIVER SILKS

- 190 - Red
- 88 - Light Green

#### CLASSIC VINEYARD SILK

- C156 - Wedgewood
- C158 - Celestial
- C154 - Cumulus

Mill Hill Magnifica Beads - 10009 - White

© SuZy Murphy and Michele

# Penguin & Friend

## PENGUIN AND FRIEND

### PENGUIN

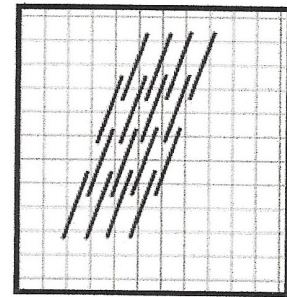
Classic Vineyard Silk

C156 - Wedgewood

C158 - Celestial

C154 - Cumulus

Encroaching Gobelin - this stitch can be altered in length. I used a shorter stitch (3X1) around his face and lengthened it for the rest of his back.



### PENGUIN BELLY

Fuzzy Stuff

FZ35 - Pale Blue

FZ15 - White

Long stitches. A specific stitch pattern is not required since you won't see the individual stitches due to the 'hairy' thread.

After all the areas around his belly are stitched, brush the Fuzzy Stuff with a toothbrush.

### PACKAGES

Neon Rays+

NP37 - Celery

NP32- Spruce Green

NP22 - Crimson

NP26 - Burgundy

Diagonal stitches, covering the paint.

### BOWS

River Silks

190 - Red

88 - Light Green

Stitch loosely with long stitches. I used 2 needles and alternated the colors.

# Penguin & Friend

## PENGUIN AND FRIEND

### SKY

Treasure Braid - 8 Strand

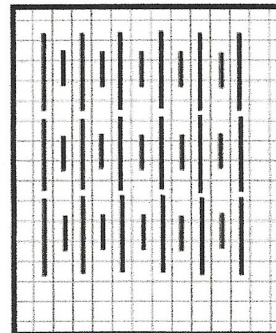
TR96 - Midnight Blue

TR88 - Royal Blue

Mill Hill Magnifica Beads - 10009 - White

Open Parisian Ribbon Stitch. Work across the sky in horizontal rows.

Add the beads when all the surrounding areas are stitched, so you do not catch the beads when working other areas.



### RED BIRD

Panache

PN02 - White

PN15 - Ruby Red

PN16 - Burgundy

PN30 - Halloween Orange

Basketweave the body of the bird.

### BIRD BEAK AND EYES

Neon Rays

N83 - Tangerine

N81 - Nutmeg

Treasure Braid 8 Strand

TR - 85 - Black

TR - 80 - Pearl White

Tent Stitch

© SuZy Murphy and Michele

# Penguin & Friend

## PENGUIN AND FRIEND

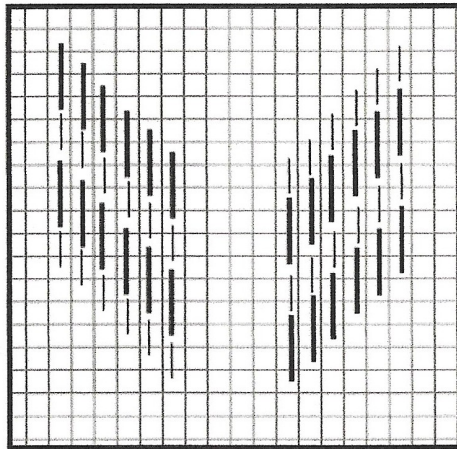
### LAVENDER AREA

Flair

F514 - Pale Red Violet

F516 - Dark Red Violet

Twill Stitch, start at the top. Reverse the Stitch for each side, follow the painting to determine the direction. The graph shows the flow of the hillsides.



### MOON

Treasure Braid - 8 strand

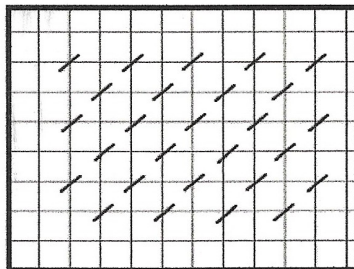
TR80 - Pearl White

Basketweave

### MOON SHADOW

Petite Treasure Braid - PB10 - Pearl White

Skip Tent - this thread and stitch give the appearance of a shadow.



© SuZy Murphy and Michele

# Penguin & Friend

## PENGUIN AND FRIEND

Stitches and Threads chosen by Suzy Murphy

A few thoughts and suggestions before you begin.

The strands should all be separated and put back together for a smoother look and better coverage.

The strands recommended are the ones I used, so you may need to adjust them for the way you stitch.

In most cases the graphs are not counted from the canvas, so the actual counts you use may be different.

All of the supplies were available when I stitched this piece. However, I cannot guarantee they will be at the time you purchase the canvas. If a thread or color is no longer available, you will need to find the closest substitute.

No part of this Stitch Guide may be reprinted or reproduced without permission from Michelle Norset or SuZy Murphy.

Have fun and Happy Stitching.

Suzy Murphy

