

# THE FINIAL COMPANY™



February 2019  
Metal Traverse Collection Catalog



## 1<sup>1</sup>/<sub>8</sub>" - 1<sup>3</sup>/<sub>8</sub>" modern metal traverse systems

- The perfect modern solution for residential or commercial applications
- Available in 1<sup>1</sup>/<sub>8</sub>" and 1<sup>3</sup>/<sub>8</sub>" diameters
- Baton draw: center or one-way
- Pinch Pleat or Ripplefold carriers in 60%, 80% 100% and 120% fullness
- Continuous track available up to 12' in select finish options; splice can be used to achieve longer lengths
- Coordinates with Modern Metal Collection finials and finishes

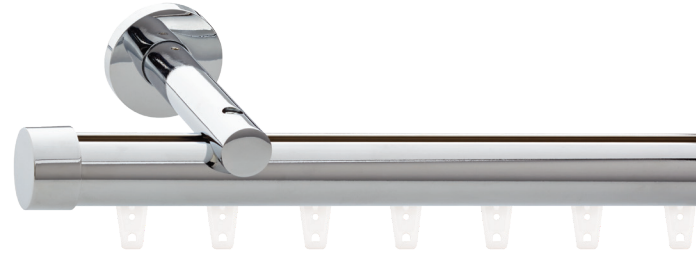
# modern metal traverse

BATON DRAW, RIPPLEFOLD OR PINCH PLEAT.

traverse  
systems

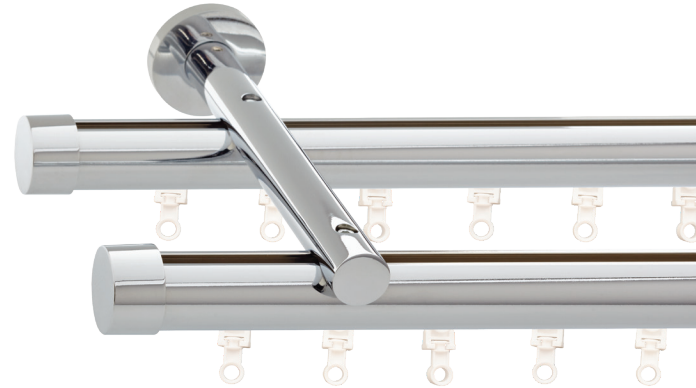
## Single Traverse System, Wall Mount

- available in 1 1/8" or 1 3/8" diameters
- wall bracket: 3 1/2" or 6" return options
- traverse systems include track, brackets, carriers, glides and round end caps.
- batons, modern collection finials and cuffs/collars sold separately



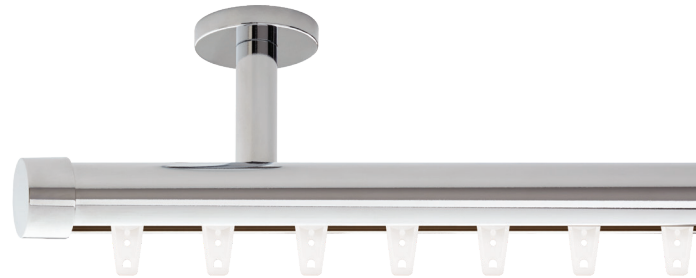
## Double Traverse System, Wall Mount

- available in 1 1/8" or 1 3/8" diameters
- wall bracket: 3" and 7 1/2" returns
- traverse systems include track, brackets, carriers, glides and round end caps.
- batons, modern collection finials and cuffs/collars sold separately



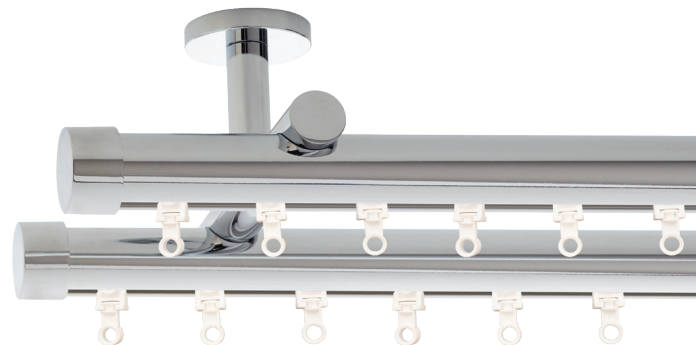
## Single Traverse System, Ceiling Mount

- available in 1 1/8" or 1 3/8" diameters
- ceiling bracket: 2 3/8" drop
- traverse systems include track, brackets, carriers, glides and round end caps.
- batons, modern collection finials and cuffs/collars sold separately



## Double Traverse System, Ceiling Mount

- available in 1 1/8" or 1 3/8" diameters
- ceiling bracket: 2 5/8" drop, 4 1/2" apart
- traverse systems include track, brackets, carriers, glides and round end caps.
- batons, modern collection finials and cuffs/collars sold separately



## Single Traverse System, Low-Profile Ceiling Mount

- available in 1 1/8" or 1 3/8" diameters
- ceiling bracket: 5/32" drop
- traverse systems include track, brackets, carriers, glides and round end caps.
- batons, modern collection finials and cuffs/collars sold separately





**TFCMT118400**  
1 1/8" metal wall bracket, single  
3 1/2" return, 1 7/8" Dia backplate



**TFCMT118402**  
1 1/8" metal wall bracket, double  
7 1/2" front and 3" back return,  
1 7/8" Dia backplate



**TFCMT118404**  
1 1/8" metal ceiling bracket, double  
2 5/8" drop, 4 1/2" apart, 1 7/8" Dia ceiling plate

**TFCMT138400**  
1 3/8" metal wall bracket, single  
3 1/2" return, 2 7/16" Dia backplate

**TFCMT138402**  
1 3/8" metal wall bracket, double  
7 1/2" front and 3" back return,  
2 7/16" Dia backplate

**TFCMT138404**  
1 3/8" metal ceiling bracket, double  
2 5/8" drop, 4 1/2" apart, 1 7/8" Dia ceiling plate

**TFCMT118401**  
1 1/8" metal wall bracket, single  
6" return, 1 7/8" Dia backplate

**TFCMT138401**  
1 3/8" metal wall bracket, single  
6" return, 2 7/16" Dia backplate



**TFCMT118403**  
1 1/8" metal ceiling mount bracket  
2 3/8" drop, 1 7/8" Dia ceiling plate



**TFCMT118405**  
1 1/8" metal ceiling bracket extender  
2" drop



**TFCMT118406**  
1 1/8" low profile metal ceiling bracket  
5/32" drop

**TFCMT138403**  
1 3/8" metal ceiling mount bracket  
2 3/8" drop, 1 7/8" Dia ceiling plate

**TFCMT138405**  
1 3/8" metal ceiling bracket extender  
2" drop

**TFCMT138406**  
1 3/8" low profile metal ceiling bracket  
5/32" drop



**TFCMT118409**  
1 1/8" hinged elbow  
2 7/8" L



**TFCMT118407**  
connector/splice  
Brass only

**TFCMT138409**  
1 3/8" hinged elbow  
2 7/8" L

**TFCMT138407**  
connector/splice  
Brass only

# carriers

# traverse systems

Modern Metal Traverse Systems work with pinch pleat ball-bearing carriers and Ripplefold roller carriers. For more details on pinch pleat and Ripplefold carriers, please see the price list.



### pinch pleat master carriers

- stainless steel overlap arms
- multi-wheel design for smooth movement
- baton draw
- left and right
- available in white and brown



### Ripplefold overlap master carriers

- stainless steel overlap arms with snaps to accept Ripplefold tape
- multi-wheel design for smooth movement
- overlap master carriers come standard unless otherwise specified
- baton draw
- left and right
- available in white and brown



### Ripplefold butt master carriers

- snaps to accept Ripplefold tape
- multi-wheel design for smooth movement
- butt master carriers do not overlap, allowing some light to filter between draperies on center draw treatments
- butt master carriers must be specified for substitution
- baton draw
- left and right
- available in white and brown



### heavy duty ball bearing pinch pleat glide

- ball bearing wheel for smooth movement
- available in white and brown



### Ripplefold glide

- Ripplefold glides with detachable pendants
- 60%, 80%, 100% and 120% fullness available *please specify fullness on order*
- available in white and brown

# batons



CH BN SG BBN MK  
A

B

- A** TFCM312S  
metal baton  
3/8" Dia, available in 36"
- TFCM314S  
metal baton  
3/8" Dia, available in 48"
- TFCM316S  
metal baton  
3/8" Dia, available in 60"
- B** ABTN-36  
clear acrylic baton  
3/8" Dia, available in 36"
- ABTN-48  
clear acrylic baton  
3/8" Dia, available in 48"

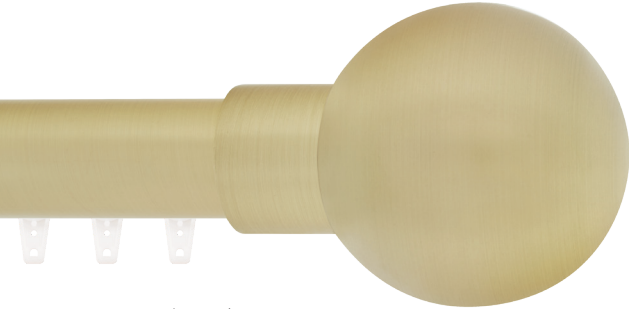
# finials

MODERN METAL DESIGN COMBINATIONS

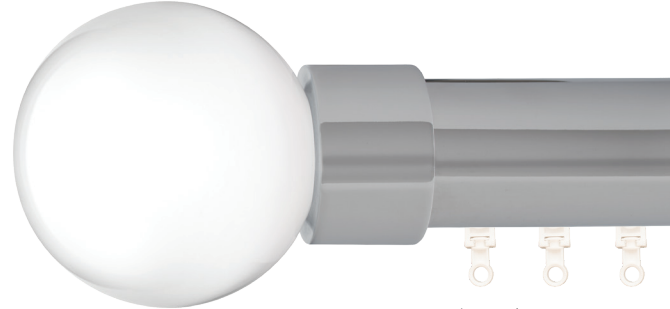
## 1

Select Your Modern Metal Traverse System:

1 1/8" and 1 3/8" baton draw tracks are available in all 5 modern finishes.



1 1/8" Track  
Bryant finial  
Satin Gold  
pictured with  
1 1/8" modern cuff  
in Satin Gold



1 3/8" Track  
Bryant finial  
Acrylic  
pictured with  
1 3/8" modern cuff  
in Chrome

## 2

Select your Finial Style:

Modern Metal Collection finials are designed to coordinate with both 1 1/8" and 1 3/8" track diameters.



1 1/8" Track  
Bryant finial  
Satin Gold  
pictured with  
1 1/8" modern collar  
in Satin Gold



1 3/8" Track  
Bryant finial  
Acrylic  
pictured with  
1 3/8" modern collar  
in Chrome

## 3

Select a Cuff or Collar:

Select from any of our 3 cuff and collar designs in your track diameter. Mix or match with our 5 modern finishes.

Sold separately on page 8.

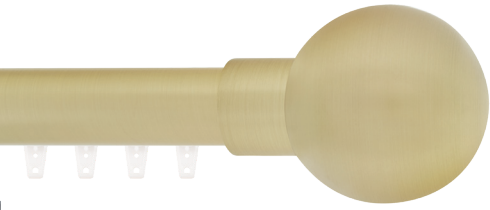


1 1/8" Track  
Bryant finial  
Satin Gold  
pictured with  
1 1/8" transitional collar  
in Satin Gold



1 3/8" Track  
Bryant finial  
Acrylic  
pictured with  
1 3/8" transitional collar  
in Chrome

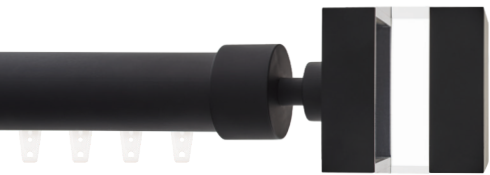
# traverse systems



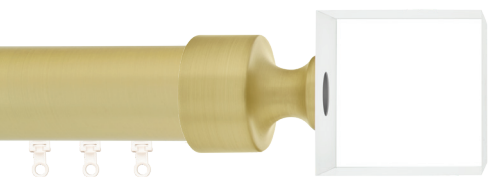
**TFCM600  
Bryant**  
2<sup>7</sup>/<sub>8</sub>"L x 2<sup>3</sup>/<sub>4</sub>"W  
Satin Gold  
pictured with  
1<sup>1</sup>/<sub>8</sub>" modern cuff  
and track



**TFCM600/CL  
Bryant Acrylic**  
2<sup>7</sup>/<sub>8</sub>"L x 2<sup>3</sup>/<sub>4</sub>"W  
pictured with  
1<sup>3</sup>/<sub>8</sub>" transitional collar  
and track in Chrome



**TFCM601  
Declan**  
2<sup>1</sup>/<sub>4</sub>"L x 2<sup>1</sup>/<sub>4</sub>"W  
Matte Black pictured with  
1<sup>1</sup>/<sub>8</sub>" modern collar  
and track



**TFCM601/CL  
Declan Acrylic**  
2<sup>1</sup>/<sub>4</sub>"L x 2<sup>1</sup>/<sub>4</sub>"W  
pictured with  
1<sup>3</sup>/<sub>8</sub>" transitional collar  
and track in Satin Gold



**TFCM602  
Upton**  
4"L x 1<sup>7</sup>/<sub>8</sub>"W  
Brushed Nickel  
pictured with  
1<sup>1</sup>/<sub>8</sub>" modern cuff  
and track



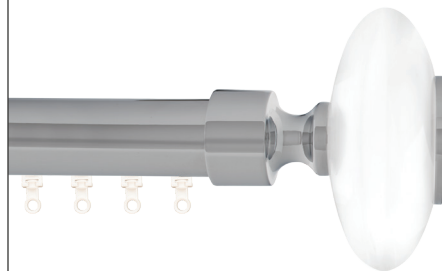
**TFCM602/CL  
Upton Acrylic**  
4"L x 1<sup>7</sup>/<sub>8</sub>"W  
pictured with  
1<sup>1</sup>/<sub>8</sub>" modern collar  
and track in Brushed Nickel



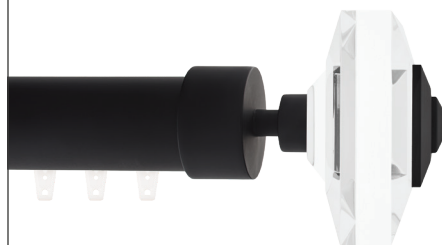
**TFCM603  
Delano**  
4"L x 1<sup>7</sup>/<sub>8</sub>"W  
Brushed Black Nickel  
pictured with  
1<sup>1</sup>/<sub>8</sub>" modern cuff  
and track



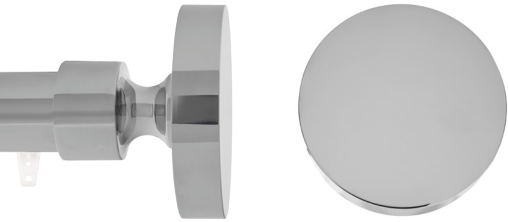
**TFCM604  
Mercer**  
4"L x 1<sup>7</sup>/<sub>8</sub>"W  
Satin Gold pictured with  
1<sup>3</sup>/<sub>8</sub>" transitional collar  
and track



**TFCM605  
Luca**  
2"L x 3<sup>3</sup>/<sub>4</sub>"W  
Acrylic pictured with  
1<sup>1</sup>/<sub>8</sub>" transitional collar  
and track in Chrome



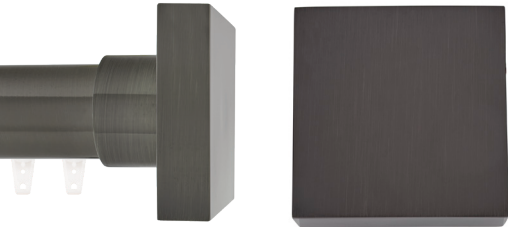
**TFCM606  
Stiles**  
2<sup>3</sup>/<sub>8</sub>"L x 3"W  
Acrylic pictured with  
1<sup>3</sup>/<sub>8</sub>" modern collar  
and track in Matte Black



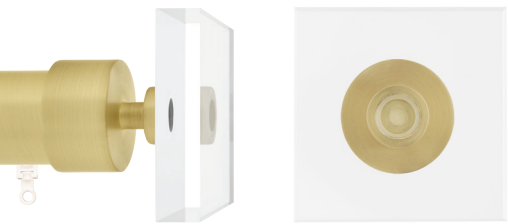
**TFCM691**  
**Anson**  
7/8" L x 3" W  
Chrome pictured with  
1 1/8" transitional collar  
and track



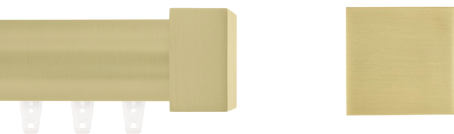
**TFCM691/CL**  
**Anson Acrylic**  
7/8" L x 3" W  
pictured with  
1 1/8" modern cuff  
and track in Matte Black



**TFCM692**  
**Eason**  
1" L x 2 7/8" W  
Brushed Black Nickel  
pictured with  
1 3/8" modern cuff  
and track



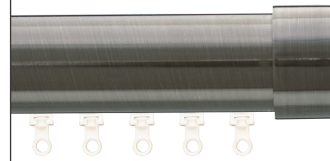
**TFCM692/CL**  
**Eason Acrylic**  
1" L x 2 7/8" W  
pictured with  
1 3/8" modern collar  
and track in Satin Gold



**TFCM118690**  
**Bex 1 1/8" End Cap**  
3/4" L x 1 3/8" W  
Satin Gold pictured  
with track

**TFCM138690**  
**Bex 1 3/8" End Cap**  
1" L x 1 5/8" W

*Bex End Caps do not require a cuff or collar.*



**TFCM118104**  
**Round 1 1/8" End Cap**  
3/4" L x 1 1/4" W  
Brushed Black Nickel  
pictured with track

**TFCM138104**  
**Round 1 3/8" End Cap**  
3/4" L x 1 1/2" W

## cuffs & collars

Modern Collection finials are designed to coordinate with both 1 1/8" and 1 3/8" cuffs and collars. Please select a cuff or collar in any modern finish to match your selected traverse system diameter.



**TFCM118800**  
1 1/8" metal modern cuff  
1" L x 1 3/8" W

**TFCM138800**  
1 3/8" metal modern cuff  
1" L x 1 5/8" W



**TFCM118801**  
1 1/8" metal modern collar  
1 5/8" L x 1 3/8" W

**TFCM138801**  
1 3/8" metal modern collar  
1 5/8" L x 1 5/8" W

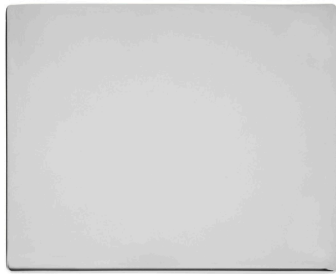


**TFCM118802**  
1 1/8" metal transitional collar  
1 5/8" L x 1 3/8" W

**TFCM138802**  
1 3/8" metal transitional collar  
1 7/8" L x 1 5/8" W



# finishes



CH Chrome



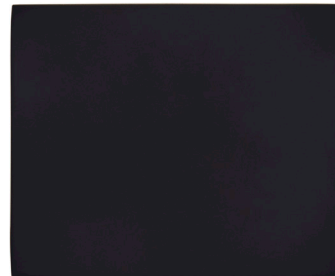
BN Brushed Nickel



SG Satin Gold



BBN Brushed Black Nickel



MK Matte Black

- Maximum continuous track length in Chrome and Satin Gold is 8'. All other finishes available up to 12'. Center draw tracks can be spliced for longer lengths. See order form on pages 16 - 17 for details.



## 1<sup>3</sup>/<sub>8</sub>" metal traverse systems

- The perfect modern solution for residential or commercial applications
- Available in 1<sup>3</sup>/<sub>8</sub>" diameter
- Baton draw: center or one-way
- Pinch Pleat or Ripplefold carriers in 60%, 80% 100% and 120% fullness
- Continuous track available up to 12' in select finish options; splice can be used to achieve longer lengths
- Coordinates with 1<sup>3</sup>/<sub>8</sub>" Metal Collection finials and finishes

# metal traverse

BATON DRAW, RIPPLEFOLD OR PINCH PLEAT.

traverse  
systems

## Single Traverse System, Wall Mount

- available in 1 3/8" diameter
- wall bracket: 3 1/2" or 6" return options
- traverse systems include track, brackets, carriers, glides and round end caps.
- batons, metal collection finials sold separately



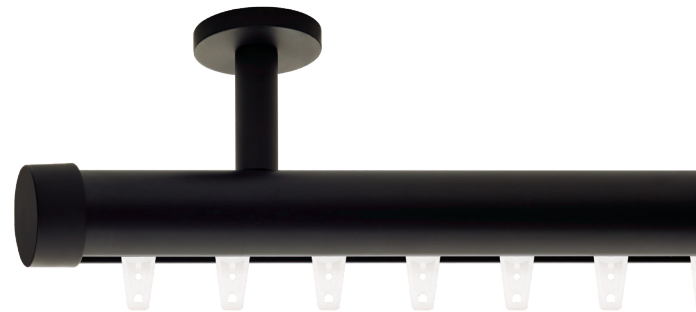
## Double Traverse System, Wall Mount

- available in 1 3/8" diameter
- wall bracket: 3" and 7 1/2" returns
- traverse systems include track, brackets, carriers, glides and round end caps.
- batons, metal collection finials sold separately



## Single Traverse System, Ceiling Mount

- available in 1 3/8" diameter
- ceiling bracket: 2 3/8" drop
- traverse systems include track, brackets, carriers, glides and round end caps.
- batons, metal collection finials sold separately



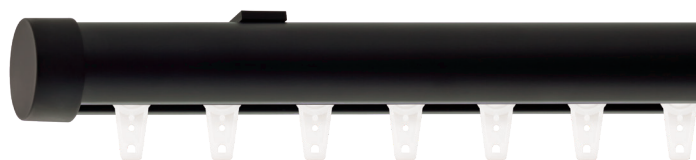
## Double Traverse System, Ceiling Mount

- available in 1 3/8" diameter
- ceiling bracket: 2 5/8" drop, 4 1/2" apart
- traverse systems include track, brackets, carriers, glides and round end caps.
- batons, metal collection finials sold separately



## Single Traverse System, Low-Profile Ceiling Mount

- available in 1 3/8" diameter
- ceiling bracket: 5/32" drop
- traverse systems include track, brackets, carriers, glides and round end caps.
- batons, metal collection finials sold separately





**TFCMT138400**  
1 3/8" metal wall bracket, single  
3 1/2" return, 2 7/16" Dia backplate



**TFCMT138402**  
1 3/8" metal wall bracket, double  
7 1/2" front and 3" back return,  
2 7/16" Dia backplate



**TFCMT138404**  
1 3/8" metal ceiling bracket, double  
2 3/8" drop, 4 1/2" apart, 1 7/8" Dia ceiling plate

**TFCMT138401**  
1 3/8" metal wall bracket, single  
6" return, 2 7/16" Dia backplate



**TFCMT138403**  
1 3/8" metal ceiling mount bracket  
2 3/8" drop, 1 7/8" Dia ceiling plate



**TFCMT138405**  
1 3/8" metal ceiling bracket extender  
2" drop



**TFCMT138406**  
1 3/8" low profile metal ceiling bracket  
5/32" drop



**TFCMT138409**  
1 3/8" hinged elbow  
2 7/8" L



**TFCMT138407**  
connector/splice  
Brass only

# carriers

# traverse systems

Metal Traverse Systems work with pinch pleat ball-bearing carriers and Ripplefold roller carriers. For more details on pinch pleat and Ripplefold carriers, please see the price list.



### pinch pleat master carriers

- stainless steel overlap arms
- multi-wheel design for smooth movement
- baton draw
- left and right
- available in white and brown



### Ripplefold overlap master carriers

- stainless steel overlap arms with snaps to accept Ripplefold tape
- multi-wheel design for smooth movement
- overlap master carriers come standard unless otherwise specified
- baton draw
- left and right
- available in white and brown



### Ripplefold butt master carriers

- snaps to accept Ripplefold tape
- multi-wheel design for smooth movement
- butt master carriers do not overlap, allowing some light to filter between draperies on center draw treatments
- butt master carriers must be specified for substitution
- baton draw
- left and right
- available in white and brown



### heavy duty ball bearing pinch pleat glide

- ball bearing wheel for smooth movement
- available in white and brown



### Ripplefold glide

- Ripplefold glides with detachable pendants
- 60%, 80%, 100% and 120% fullness available *please specify fullness on order*
- available in white and brown

# batons



PN AP AB BZ ORB SK MK  
A



B

- A TFCM312S  
metal baton  
3/8" Dia, available in 36"
- TFCM314S  
metal baton  
3/8" Dia, available in 48"
- TFCM316S  
metal baton  
3/8" Dia, available in 60"
- B ABTN-36  
clear acrylic baton  
3/8" Dia, available in 36"
- ABTN-48  
clear acrylic baton  
3/8" Dia, available in 48"

## finials



**TFCM138100**  
**Turner**  
5"L x 3"W  
Antique Pewter  
pictured with track



**TFCM138101**  
**Britton**  
3 1/4"L x 3 7/8"W  
Venetian Bronze  
pictured with track  
in Matte Black



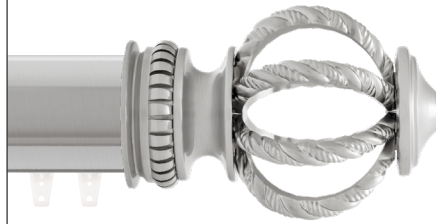
**TFCM138102**  
**Ashby**  
3 7/8"L x 3 3/8"W  
Dark Oil Rubbed Bronze  
pictured with track  
in Matte Black



**TFCM138103**  
**Abington**  
4 3/8"L x 3 1/4"W  
Brushed Bronze  
pictured with track



**TFCM138104**  
**Harlow**  
4 3/8"L x 3"W  
Antique Brass  
pictured with track



**TFCM138105**  
**Weston**  
4 1/4"L x 3 1/8"W  
Polished Nickel  
pictured with track



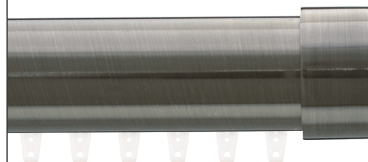
**TFCM138106**  
**Brentford**  
3 5/8"L x 3 1/4"W  
Venetian Bronze  
pictured with track  
in Matte Black



**TFCM138107**  
**Rothwell**  
4 1/8"L x 3"W  
Oil Rubbed Bronze  
pictured with track



**TFCM138190**  
**Wells End Cap**  
1 1/4"L x 2 1/4"W  
Satin Black  
pictured with track



**TFCM138104**  
**Round 1 3/8" End Cap**  
3/4"L x 1 1/2"W  
Brushed Black Nickel  
pictured with track

# finishes



PN Polished Nickel



AP Antique Pewter



AB Antique Brass



BZ Brushed Bronze



ORB Oil Rubbed Bronze



VZ Venetian Bronze



DRB Dark Oil Rubbed  
Bronze



SK Satin Black

- Maximum continuous track length in BZ and ORB is 8'. All other finishes available up to 12'. Center draw tracks can be spliced for longer lengths. See order form on pages 16 - 17 for details.
- Venetian Bronze (VZ) and Dark Oil Rubbed Bronze (DRB) finials coordinate with Matte Black (MK) tracks, brackets and batons.

# traverse systems

## how to order your metal traverse system in 5 easy steps.

### 1 SELECT YOUR TRAVERSE SYSTEM



- single traverse wall mount
- return choice:
  - 3 1/2"
  - 6"



- single traverse ceiling mount



- single traverse ceiling clip



- double traverse wall mount



- double traverse ceiling mount

### 2 SELECT A TRACK DIAMETER, WIDTH AND FINISH

MODERN METAL TRAVERSE	1 1/8" Dia	1 3/8" Dia	Track Cut Length (in.)	Max. Length
CH Chrome	<input type="checkbox"/>	<input type="checkbox"/>		192" Center   96" One-Way
BN Brushed Nickel	<input type="checkbox"/>	<input type="checkbox"/>		288" Center   144" One-Way
SG Satin Gold	<input type="checkbox"/>	<input type="checkbox"/>		192" Center   96" One-Way
BBN Brushed Black Nickel	<input type="checkbox"/>	<input type="checkbox"/>		288" Center   144" One-Way
MK Matte Black	<input type="checkbox"/>	<input type="checkbox"/>		288" Center   144" One-Way

METAL TRAVERSE	1 3/8" Dia	Track Cut Length (in.)	Max. Length
PN Polished Nickel	<input type="checkbox"/>		288" Center   144" One-Way
AP Antique Pewter	<input type="checkbox"/>		288" Center   144" One-Way
AB Antique Brass	<input type="checkbox"/>		288" Center   144" One-Way
BZ Brushed Bronze	<input type="checkbox"/>		192" Center   96" One-Way
ORB Oil Rubbed Bronze	<input type="checkbox"/>		192" Center   96" One-Way
MK Matte Black*	<input type="checkbox"/>		288" Center   144" One-Way
SK Satin Black	<input type="checkbox"/>		288" Center   144" One-Way

\*Coordinates with Venetian Bronze (VZ) and Dark Oil Rubbed Bronze (DRB) finials.

### 3 SELECT YOUR DRAPERY STYLE



- PINCH PLEAT
- overlap

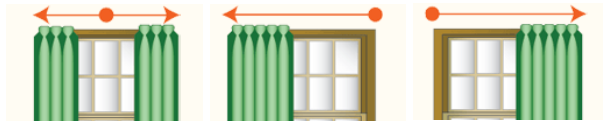


- RIPPLEFOLD
- overlap
  - butt master
  - 60%  80%  100%  120% fullness



## 4 COMPLETE YOUR TRAVERSE SPECIFICATIONS

Direction:



center draw    one-way left    one-way right

Component Colors:

White    Brown

## 5 ADD ON BATONS AND FINIALS

Batons:

add baton with steel clip  
*(baton sold separately)*

metal   finish: \_\_\_\_\_

acrylic

36"

48"

60"

36"

48"

Finials:

### MODERN METAL TRAVERSE

	finial	finial finish	metal modern cuff	metal modern collar	metal transitional collar	cuff/collar finish
TFCM600 Bryant	<input type="checkbox"/>		<input type="checkbox"/>	<input type="checkbox"/>	<input type="checkbox"/>	
TFCM600/CL Bryant Acrylic	<input type="checkbox"/>	-	<input type="checkbox"/>	<input type="checkbox"/>	<input type="checkbox"/>	
TFCM601 Declan	<input type="checkbox"/>		<input type="checkbox"/>	<input type="checkbox"/>	<input type="checkbox"/>	
TFCM601/CL Declan Acrylic	<input type="checkbox"/>	-	<input type="checkbox"/>	<input type="checkbox"/>	<input type="checkbox"/>	
TFCM602 Upton	<input type="checkbox"/>		<input type="checkbox"/>	<input type="checkbox"/>	<input type="checkbox"/>	
TFCM602/CL Upton Acrylic	<input type="checkbox"/>	-	<input type="checkbox"/>	<input type="checkbox"/>	<input type="checkbox"/>	
TFCM603 Delano	<input type="checkbox"/>		<input type="checkbox"/>	<input type="checkbox"/>	<input type="checkbox"/>	
TFCM604 Mercer	<input type="checkbox"/>		<input type="checkbox"/>	<input type="checkbox"/>	<input type="checkbox"/>	
TFCM605 Luca	<input type="checkbox"/>		<input type="checkbox"/>	<input type="checkbox"/>	<input type="checkbox"/>	
TFCM606 Stiles	<input type="checkbox"/>		<input type="checkbox"/>	<input type="checkbox"/>	<input type="checkbox"/>	
TFCM691 Anson	<input type="checkbox"/>		<input type="checkbox"/>	<input type="checkbox"/>	<input type="checkbox"/>	
TFCM691/CL Anson Acrylic	<input type="checkbox"/>	-	<input type="checkbox"/>	<input type="checkbox"/>	<input type="checkbox"/>	
TFCM692 Eason	<input type="checkbox"/>		<input type="checkbox"/>	<input type="checkbox"/>	<input type="checkbox"/>	
TFCM692/CL Eason Acrylic	<input type="checkbox"/>	-	<input type="checkbox"/>	<input type="checkbox"/>	<input type="checkbox"/>	
TFCM118690 Bex 1 <sup>1</sup> / <sub>8</sub> " End Cap	<input type="checkbox"/>		-	-	-	-
TFCM138690 Bex 1 <sup>3</sup> / <sub>8</sub> " End Cap	<input type="checkbox"/>		-	-	-	-
TFCM118104 Round 1 <sup>1</sup> / <sub>8</sub> " End Cap	<input type="checkbox"/>		-	-	-	-
TFCM138104 Round 1 <sup>3</sup> / <sub>8</sub> " End Cap	<input type="checkbox"/>		-	-	-	-

### METAL TRAVERSE

	finial	finial finish
TFCM138100 Turner	<input type="checkbox"/>	
TFCM138101 Britton	<input type="checkbox"/>	
TFCM138102 Ashby	<input type="checkbox"/>	
TFCM138103 Abington	<input type="checkbox"/>	
TFCM138104 Harlow	<input type="checkbox"/>	
TFCM138105 Weston	<input type="checkbox"/>	
TFCM138106 Brentford	<input type="checkbox"/>	
TFCM138107 Rothwell	<input type="checkbox"/>	
TFCM138190 Wells End Cap	<input type="checkbox"/>	
TFCM138104 Round End Cap	<input type="checkbox"/>	

# terms & conditions

## PRICING AND TERMS

Prices found in The Finial Company Retail Price List are our suggested retail prices. Prices are subject to change without notice. Prices are quoted exclusive of freight and packaging. The buyer should always inspect the product upon receipt.

**IMPORTANT:** Please note that your order will be placed with an authorized Finial Company Distributor. While most of the following will generally apply, your distributor may have terms and conditions of sales that will vary from what is stated here.

**Estimated Lead Times:** Purchase orders are processed once they are received by The Finial Company. Incomplete information will delay processing and shipping. Traverse systems will ship within 5 days of order confirmation.

**Shipping (NET Fees):** Tracks over 96" must be shipped by common carrier. For current common carrier freight rates go to [www.thefinialcompany.com/freightrate](http://www.thefinialcompany.com/freightrate). Expedited shipments are not available in all areas. Any additional charges for expedited shipments will be in addition to the published net fees.

The following orders will be subject to actual freight costs:

- shipments going to Alaska, Hawaii, Idaho, Montana, Puerto Rico or any international destination.
- orders that exceed a \$2,500 SRP

**Packaging Fees (NET Fees):** A net packaging fee of \$10.00 per order will apply to any order that has a track.

## RETURNS, CHANGES & CANCELLATIONS

All orders are considered "custom". No changes or cancellations will be accepted later than 24 hours after order is confirmed. All returns must be authorized by The Finial Company customer service department, and are authorized at our discretion, given the circumstances and nature of each custom order.

## DAMAGED GOODS

Immediately upon receipt, your order should be inspected to ensure that there is no concealed damage from shipping. Claims on damaged merchandise must be made within 15 days of receipt. No claims after 15 days will be accepted. If your order is damaged in shipping, carriers require that *all* packing materials be kept in order for a representative to inspect the goods. Our policy is that we replace damaged product per the original order.

Please note on the bill of lading if there is any possibility of concealed damaged. If shipping through a 3rd party, distributor is responsible for claiming damages and the remakes will be at charge.

## PRODUCT INFORMATION

**Baton Draw Traverse Tracks:** Baton draw traverse tracks are sold in 2 foot increments with a 4 foot minimum. We will cut to your specification, but we do not save or ship the fall off.

**Support Brackets:** The recommended number of brackets are included on metal traverse orders (see bracket chart on page 19). Additional brackets can be purchased for heavier weight draperies and/or corner or bay window installations.

**Installation:** Mollie bolts and nail anchors are recommended for all installations, but are not included. We strongly recommend using a professional installer for our hardware.

**Force Majeure:** The Finial Company is not liable for any performance failure that arises from any cause not within its control.



# Metal Traverse Collection Order Form

<b>PO #</b>	<b>Side Mark</b>	<b>Ship via</b>
<b>Shipping Information</b>		
Company Name	Acct #	Company Name
Contact Person		Contact Person
Street Address		
City	State	ZIP
Email		
Phone	Fax	Phone
		Fax

**METAL TRAVERSE SYSTEMS - Consult Price List for detailed specifications.**

Item #	System Length (per 2')	Cut Length	Draw Preference		Baton (sold separately)	Carrier		Carrier Color	Qty	Price per Unit	Subtotal
			Center	One-Way		Pinch Pleat or Ripplefold	White Brown				
			<input type="checkbox"/>	<input type="checkbox"/> L <input type="checkbox"/> R		<input type="checkbox"/> PP <input type="checkbox"/> RF	<input type="checkbox"/> W <input type="checkbox"/> B				
			<input type="checkbox"/>	<input type="checkbox"/> L <input type="checkbox"/> R		<input type="checkbox"/> PP <input type="checkbox"/> RF	<input type="checkbox"/> W <input type="checkbox"/> B				
			<input type="checkbox"/>	<input type="checkbox"/> L <input type="checkbox"/> R		<input type="checkbox"/> PP <input type="checkbox"/> RF	<input type="checkbox"/> W <input type="checkbox"/> B				
			<input type="checkbox"/>	<input type="checkbox"/> L <input type="checkbox"/> R		<input type="checkbox"/> PP <input type="checkbox"/> RF	<input type="checkbox"/> W <input type="checkbox"/> B				

**METAL TRAVERSE COORDINATING ACCESSORIES AND ADDITIONAL FEES**

Order finials, cuffs & collars, additional brackets and accessories here.

Item #	Finish Code	Description	Qty	Price per Unit	Subtotal

**Glide and Bracket Information**

Quantity included per set based on cut track length	4'	5'	6'	7'	8'	9'	10'	11'	12'	13'	14'	15'	16'	17'	18'	19'	20'	21'	22'	23'	24'	
Glides [4 per foot, includes master carriers & end caps (2)]	16	20	24	28	32	36	40	44	48	52	56	60	64	68	72	76	80	84	88	92	96	
Brackets	2	3	4	4	4	4	4	5	5	5	6	6	6	7	7	7	8	8	8	8	8	8

**Special Instructions**

# THE FINIAL COMPANY™

February 2019

Metal Traverse Collection Catalog

© 2019 The Finial Company. All rights reserved.