

# RYE HISTORICAL SOCIETY AND TOWN MUSEUM



SAVE THE DATE!

**Members are Invited to the Annual Meeting and Celebration**

**Sunday, July 15th 3pm  
St. Andrew's-by-the-Sea Chapel**

At our annual meeting you'll be able to hear about upcoming plans for exhibits and programs, and find out ways you can become more involved if you are so inclined. Learn more about the historic summer chapel in a special presentation. Give us your feedback and input into what the RHs should look like. Enjoy food, drink and camaraderie!

**Not a member? There is still time to join!**

Sign up [HERE](#) or contact us to join by cash or check  
[info@ryenhhistoricalsociety.org](mailto:info@ryenhhistoricalsociety.org)



**The Rye History  
Trolley Tour  
July 4th**

**Independence Day  
10:30am - noon**

**Meet at the Rye  
Library Parking Lot**

Our trolley tour is an intriguing look at various historical locations in Rye. Hear Rye stories and explore our rich history from the comfort of a trolley, then disembark at locations for an up close look and more historical anecdotes and facts.

Registration is required and seating is limited!

The tour leaves from the Rye Public Library Parking Lot  
plan to arrive by 10:15 AM

**\$20 per person \$18 for over 65 and under 18**

Reservations by e-mail only: [info@ryenhhistoricalsociety.org](mailto:info@ryenhhistoricalsociety.org)



*"Rye Rocks! - Bedrock Geology of Rye, NH and the Surrounding Area".*

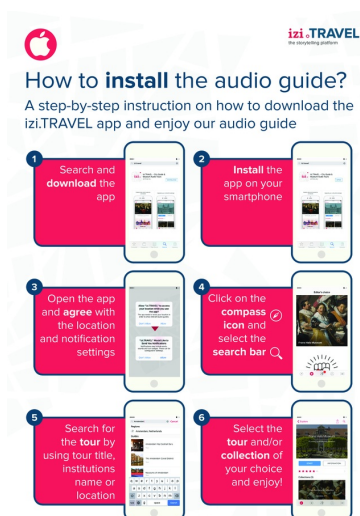
Monday July, 9 at 6:30 PM at the Rye Public Library

The presenter is Michael Quinn, a Rye resident and geologist (B.S., Univ of NH; M.S. Univ of TN; Ph.D., Rice Univ.). In this presentation, Dr. Quinn will describe how our local geology fits into the broader geologic history of the Appalachian Mountains. Come learn about the Portsmouth Fault, Rye Formation, Breakfast Hill Granite, Triassic basalt intrusions, and more!

RHS will exhibit photos of coastal rocks to support the presentation.

Sponsored by the Rye Historical Society and the Rye Public Library.

This program is the first of a series of talks of the Odiorne 1623 project culminating in 2023, the 400th anniversary of the first permanent European settlement in New Hampshire at Rendezvous (Odiorne) Point .



## Download the Rye Beach History Walking Tour App

The free Rye Beach neighborhood walking tour app, developed through the Rye Historical Society, is now available, easy to download and a great way to entertain your household guests. Send them off for a historic stroll, stories of the early experience of summering on the shore and grab yourself some idle moments.

\*Download [IZI.TRAVEL](#) onto your smart device (or your lap top for arm chair travel) from the App Store. Type Rye into the search bar and open Rye Beach Block.

One can either listen to the narration which starts up at each stop in the tour, or manage it manually by reading the tour as stops are approached. And- you'll enjoy photos of "then and now" for each house stop.

The Rye Beach tour includes 24 stops, encompassing Sea, South, Central Roads and Red Mill Lane. Choose any of the stops in which to begin/end. Enjoy a delightful step back in time for an hour or two.

---

## Museum Receives Exciting New Donation

John and Toby Heisey of Rye have donated an eleven foot bench that used to grace the lobby of the historical Farragut Hotel (1883-1975) which was located on the ocean at the end of Central Road. It was purchased at auction before the hotel was demolished in 1975 and now forms the centerpiece of our Farragut exhibit in the museum. We are grateful to the Heiseys for this wonderful donation.

---



**Music-by-the-Sea**

**St. Andrew's Historic Chapel**  
30 Church Road, Rye Beach

**Sunday June 24th ~ 3pm**  
*Mozart and More*  
Portsmouth Symphony Orchestra's  
Chamber Music Performers

**Sunday July 29th ~ 3pm**  
*Songs to Make You Smile*  
Portsmouth Pro Musica's Overtones

*All are welcome!*

Suggested donation \$10.  
Proceeds benefit the Piscataqua  
Maritime Commission's Sea  
Challenge and Safe Harbor  
Recovery Center.

Refreshments will be served on the  
lawn. Seating and parking is limited.

Presented by  
**St. Andrew's-by-the-Sea**  
An Episcopal Summer Chapel  
[www.standrews-by-the-sea.org](http://www.standrews-by-the-sea.org)

## Is Your House Special? Tell Us Why!

Be a part of an exciting program at RHS - the Rye "House of the Month". Each month a different house or road will be **featured on our newsletter as well as in Rye Magazine.**

Is your house or road historic and of special interest to the community?

If so, please contact us to enter this month's competition. Don't know much about your house but you know it's significant? **We can help you do the research!**

**Email us TODAY at [info@ryenhhistoricalsociety.org](mailto:info@ryenhhistoricalsociety.org)**

## Share The History of Your Home with a Historic House Plaque

Many Rye homes, business and public buildings are adorned with these handsome plaques. The cost of a plaque is \$85.

If you would like one for your home to add to the heritage of the town, house plaque applications may be picked up at the Rye library on the coffee table (behind the RHS brochures).

Check and application may be mailed to PO Box 583, Rye, NH 03870 or left in our mailbox by the front door of the museum.



### Summer Hours in Effect for May - October

The Rye Historical Society's Museum is open Saturdays 10-12

Always by request - please call for an appointment 603-997-6742 or email us at [info@ryenhhistoricalsociety.org](mailto:info@ryenhhistoricalsociety.org)

Rye Historical Society | 603-997-6742 | [info@ryenhhistoricalsociety.org](mailto:info@ryenhhistoricalsociety.org)

10 Olde Parish Road, Rye, NH 03870

[Click here to be added to our email list](#)

