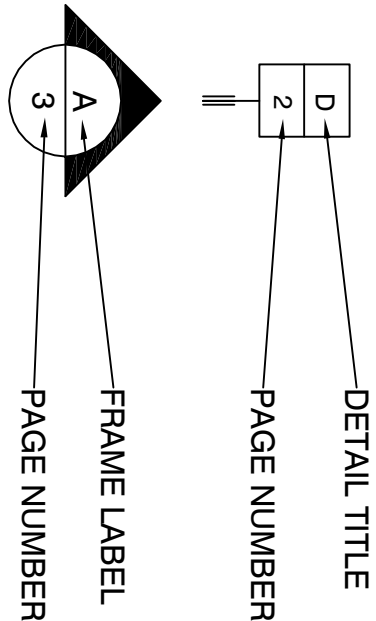


ABBREVIATIONS



(O.A.FR.) OVERALL ALUMINUM FRAMING

R.O. ROUGH OPENING

(101A) DOOR NUMBER

N.B.G.C. NOT BY GLAZING CONTRACTOR



BACKER ROD AND SEALANT



FIELD APPLIED SEALANT



FIELD ANCHOR



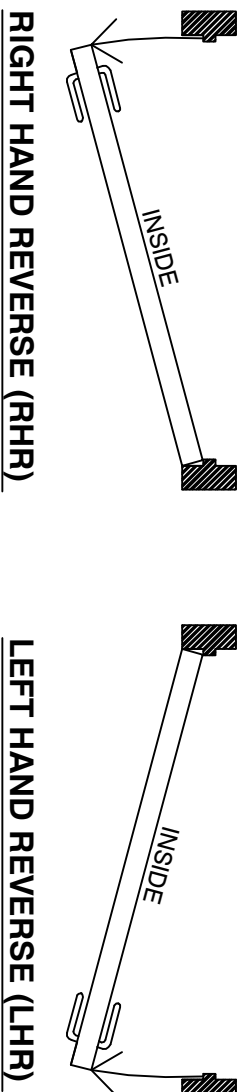
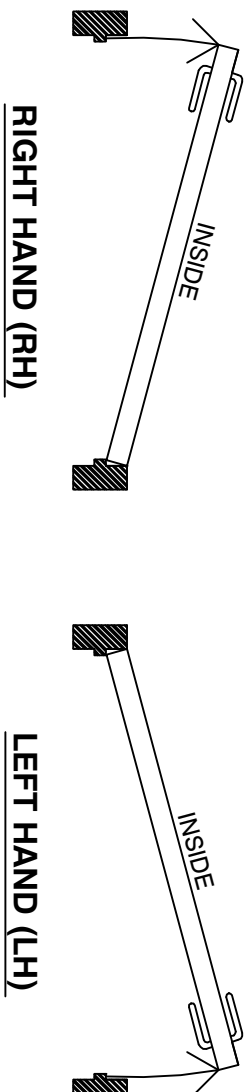
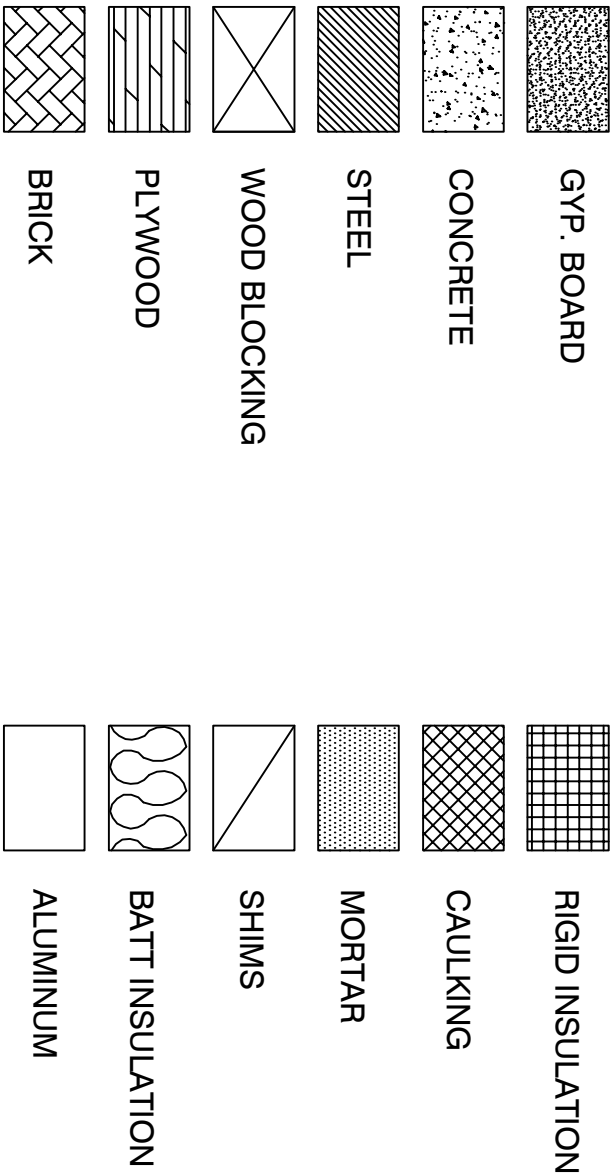
DIMENSIONAL REFERENCE ELEVATION



BREAK METAL BY GLAZING CONTRACTOR

D.L.O. DAY LITE OPENING

A.F.F. ABOVE FINISHED FLOOR



GLASS SCHEDULE

***NOTE: ALL GLASS TO BE TEMPERED

G1	OB: 1/4" PPG SOLARBAN R100 ON PACIFICA LOW-E #2 AS: 1/2" AIRSPACE W/ BLACK ALUMINUM SPACER IB: 1/4" CLEAR	G3	OB: 1/4" PPG SOLARBAN 60 ON PACIFICA LOW-E #2 AS: 1/2" AIRSPACE W/ BLACK ALUMINUM SPACER IB: 1/4" CLEAR ACID-ETCHED #3
G2	OB: 1/4" PPG SOLARBAN 60 ON CLEAR LOW-E #2 AS: 1/2" AIRSPACE W/ BLACK ALUMINUM SPACER IB: 1/4" CLEAR	G4	OB: 1/4" PPG PACIFICA HIGH PERFORMANCE TINT AS: 1/2" AIRSPACE W/ BLACK ALUMINUM SPACER IB: 1/4" CLEAR W/ WARM GRAY OPACI-COAT #4

PRODUCTS USED

PRODUCT DESCRIPTION	WIDTH	DEPTH
TUBELITE T14000 SERIES STOREFRONT	2"	4 1/2"
TUBELITE MEDIUM STYLE DOORS	4"	1 3/4"
TUBELITE 10" BOTTOM DOOR RAIL	10"	1 3/4"
TUBELITE T14650 SERIES STOREFRONT	2"	6 1/2"



YOUR LOGO
HERE

GENERAL NOTES

- BY APPROVING SHOP DRAWINGS, GENERAL CONTRACTOR UNDERSTANDS THE MATERIALS AND METHODS INVOLVED IN THE INSTALLATION OF STOREFRONT AND ENTRANCES.
- ALL DOOR HARDWARE SPECIFIED IN DOOR SCHEDULE WILL BE THE EXACT HARDWARE TO BE PROVIDED FOR THE JOB. NO ADDITIONAL HARDWARE WILL BE PROVIDED UNLESS SPECIFIED ON THESE SHOP DRAWINGS.
- GLASS SHOWN ON DETAILS ARE FOR REFERENCE ONLY. REFER TO ELEVATIONS AND GLASS SCHEDULE FOR TYPE, SIZE AND LOCATION.
- ATLAS DRAFTING & DESIGN WILL ASSUME NO RESPONSIBILITY FOR ERRORS RESULTING FROM THE USE OF THESE DRAWINGS BY ANY TRADES.
- THESE DRAWINGS HAVE BEEN PREPARED IN ACCORDANCE WITH ATLAS' QUOTATION OR PER AN ACCEPTED CHANGE ORDER AND OTHER APPLICABLE CONTRACT DOCUMENTS.
- THESE DRAWINGS REPRESENT ATLAS' INTERPRETATION OF THE APPLICATION OF PRODUCTS TO THIS PROJECT IN FUNCTIONAL COMPLIANCE WITH THE ARCHITECT'S DRAWINGS AND SPECIFICATIONS. IT IS IMPORTANT THAT THIS INTERPRETATION BE REVIEWED DIMENSIONALLY AND FUNCTIONALLY WITH RESPECT TO ACTUAL ARCHITECT INTENT, INTERFACING CONDITIONS, MATERIALS AND JOB SITE SPECIFIC CONDITIONS.
- ALL GASKET JOINTS, CAULKING AND SEALANT SHOULD BE SEALED WATERTIGHT FOLLOWING SEALANT MANUFACTURER RECOMMENDATIONS AS TO SIZE, METHOD OF APPLICATION AND COMPATIBILITY WITH ADJOINING MATERIAL.
- THE ROUGH OPENINGS PROVIDED MUST BE SQUARE AND WITHIN SPECIFIED BUILDING TOLERANCES.
- NEITHER ATLAS NOR **YOUR COMPANY NAME** ARE RESPONSIBLE FOR THE FOLLOWING:
 - FINAL CLEANING OR PROTECTION OF INSTALLED MATERIALS
 - SPECIAL AND/OR ANY FIELD TESTING
 - WOOD BLOCKING OR PLYWOOD SHEATHING SHOWN ON ARCHITECTURALS
 - ALL SHEET MEMBRANE WATERPROOFING AND/OR AIR BARRIER MEMBRANES, INCLUDING ANY TRANSITIONAL MATERIALS
 - INTERIOR CAULKING (UNLESS OTHERWISE NOTED, CAULKING CONSISTS OF THAT WHICH IS REQUIRED FOR A WATER TIGHT SEAL OF OUR FRAMING)
 - REPLACEMENT OF DAMAGED MATERIALS EXCEPT THOSE DIRECTLY PRECIPITATED BY **YOUR COMPANY NAME**

FINISH SCHEDULE

	DESCRIPTION:
<input checked="" type="radio"/> CLEAR ANODIZED	<u>THERMALLY IMPROVED</u>
<input type="radio"/> BRONZE ANODIZED	_____
<input type="radio"/> PAINT	_____
<input type="radio"/> C1 CLEAR ANODIZED	_____

ALL OPENINGS TO BE FIELD VERIFIED BEFORE FABRICATION.

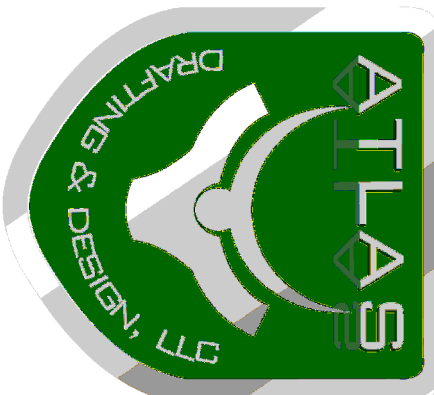
COMPANY NAME WILL NOT MEASURE OR INSTALL STOREFRONT FRAMES INTO WINDOW OPENINGS THAT ARE NOT PLUMB AND LEVEL.

STOREFRONT DOOR SCHEDULE

DOOR #	DOOR SIZE	DOOR TYPE	HARDWARE GROUP
E112	30" X 70" LH	ALUMINUM STOREFRONT	1
E113	30" X 70" LH	ALUMINUM STOREFRONT	1
E114	30" X 70" LH	ALUMINUM STOREFRONT	1
E700	30" X 70" LH	ALUMINUM STOREFRONT	1
E705	30" X 70" LH	ALUMINUM STOREFRONT	1
E200	60" X 70" PAIR	ALUMINUM STOREFRONT	2
EB01	60" X 70" PAIR	ALUMINUM STOREFRONT	2
100A	60" X 80" PAIR	ALUMINUM STOREFRONT	2
100B	60" X 80" PAIR	ALUMINUM STOREFRONT	2
102A	60" X 80" PAIR	ALUMINUM STOREFRONT	3
102B	60" X 80" PAIR	ALUMINUM STOREFRONT	3
106	36" X 80" LH	ALUMINUM STOREFRONT	1
200	60" X 70" PAIR	ALUMINUM STOREFRONT	2
401	60" X 80" PAIR	ALUMINUM STOREFRONT	2

SHEET INDEX

PAGE #	DESCRIPTION	PAGE #	DESCRIPTION
A101	BP2 OVERALL FLOOR PLAN	D109	T14000 STOREFRONT DETAILS
A102	BP2 FIRST FLOOR PLAN	D110	T14000 STOREFRONT DETAILS
A103	BP2 SECOND FLOOR PLAN	D111	T14000 STOREFRONT DETAILS
A104	BP2 ELEVATION VIEWS	D112	T14000 STOREFRONT DETAILS
A201	BP3 OVERALL FLOOR PLAN	D113	T14000 STOREFRONT DETAILS
A202	BP3 FIRST FLOOR PLAN	D114	T14000 STOREFRONT DETAILS
A203	BP3 SECOND FLOOR PLAN	D115	E4500 STOREFRONT DETAILS
A204	BP3 ELEVATION VIEWS	E101	"F" & "T" ANCHOR SCHEDULE
A301	BP4 OVERALL FLOOR PLAN	E102	"F" & "T" ANCHOR DETAILS
A302	BP4 FIRST FLOOR PLAN	F101	T2 TRANSACTION WINDOW
A303	BP4 ELEVATION VIEWS	F102	MANKO 175 SERIES SLIDER
B101	CURTAIN WALL ELEVATION SHEET	F103	MANKO 600 SERIES DETAILS
B102	CURTAIN WALL ELEVATION SHEET		
B103	CURTAIN WALL ELEVATION SHEET		
B104	CURTAIN WALL ELEVATION SHEET		
B105	CURTAIN WALL ELEVATION SHEET		
B201	STOREFRONT ELEVATION SHEET		
B202	STOREFRONT ELEVATION SHEET		
B203	STOREFRONT ELEVATION SHEET		
B204	STOREFRONT ELEVATION SHEET		
B205	STOREFRONT ELEVATION SHEET		
B206	STOREFRONT ELEVATION SHEET		
B207	STOREFRONT ELEVATION SHEET		
B208	STOREFRONT ELEVATION SHEET		
D101	400 SERIES CURTAIN WALL DETAILS		
D102	400 SERIES CURTAIN WALL DETAILS		
D103	400 SERIES CURTAIN WALL DETAILS		
D104	400 SERIES CURTAIN WALL DETAILS		
D105	400 SERIES CURTAIN WALL DETAILS		
D106	400 SERIES CURTAIN WALL DETAILS		
D107	T14000 STOREFRONT DETAILS		
D108	T14000 STOREFRONT DETAILS		



5755 BOEING DRIVE
LOVELAND, CO 80538
P: 970.237.2396
F: 970.203.9212

REVISIONS	NO.

PROJECT: PROJECT NAME
LOCATION: CITY, STATE
GENERAL CONTRACTOR: COMPANY NAME
ARCHITECT: COMPANY NAME

YOUR LOGO

ADDRESS
CITY, STATE, ZIP
PHONE
FAX

DATE:	DATE
SCALE:	NTS
DRAWN BY:	JAE

GLAZING SHOP
DRAWINGS

COVER

SHEET