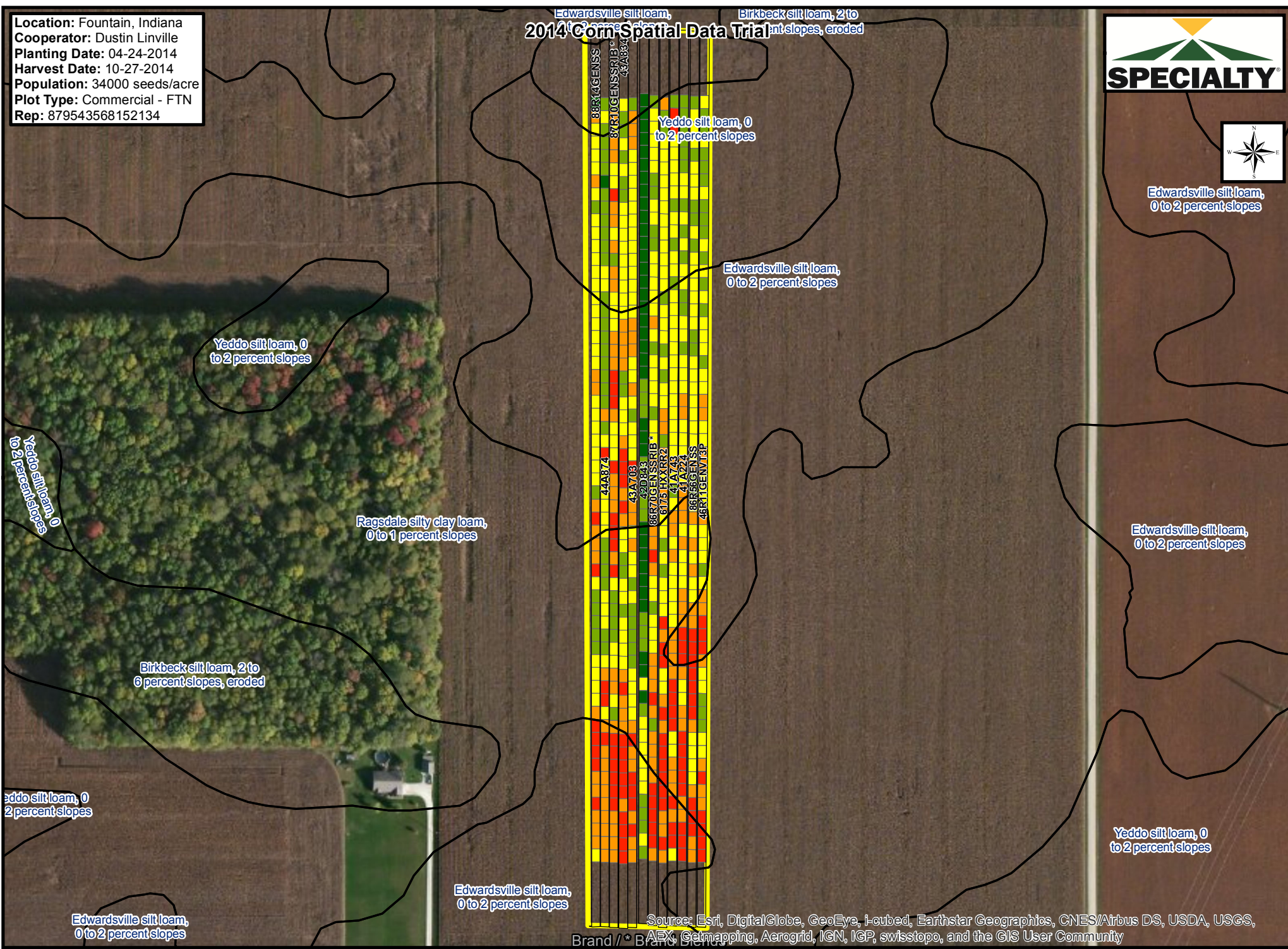


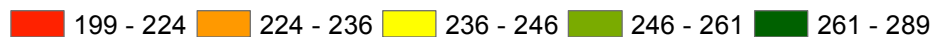
Location: Fountain, Indiana
Cooperator: Dustin Linville
Planting Date: 04-24-2014
Harvest Date: 10-27-2014
Population: 34000 seeds/acre
Plot Type: Commercial - FTN
Rep: 879543568152134

2014 Corn Spatial Data Trial



Source: Esri, DigitalGlobe, GeoEye, i-cubed, Earthstar Geographics, CNES/Airbus DS, USDA, USGS, AEX, Geomapping, Aerogrid, IGN, IGP, swisstopo, and the GIS User Community

Yield Values - Bushels Per Acre



Location: Fountain, Indiana
Cooperator: Dustin Linville
Planting Date: 04-24-2014
Harvest Date: 10-27-2014
Population: 34000 seeds/acre
Plot Type: Commercial - FTN
Rep: 879543568152134

Legend

All yield values are in bu/ac. All Area units are in Acres.

Soils (Yield in bu/ac):

Soil1 = Edwardsville silt loam, 0 to 2 percent slopes

Soil2 = Ragsdale silty clay loam, 0 to 1 percent slopes

Soil3 = Yeddo silt loam, 0 to 2 percent slopes

Soil4 = Birkbeck silt loam, 2 to 6 percent slopes, eroded

* Denotes Product Brand Blend.

ID	Business Brand	Product Brand	Traits	Rank	Yield	CV	Moisture	Area (sum)	Yield Soil1	CV Soil1	Yield Soil2	CV Soil2	Yield Soil3	CV Soil3	Yield Soil4	CV Soil4
1	SPECIALTY HYBRIDS	46R11GENVT3P	GENVT3PRIB	3	239	4.7	16.7	0.7	236	4.3	237	5	250	1.3		
2	SPECIALTY HYBRIDS	86R56GENSS	GENSSRIB	7	237	5.1	16.1	0.7	237	5	230	5.4	246	1.9		
3	SPECIALTY HYBRIDS	41A224	GENSSRIB	8	237	4.8	17	0.7	235	4.9	231	4	249	1.4		
4	SPECIALTY HYBRIDS	41A743	GENSSRIB	9	237	4.6	18.4	0.7	238	3.8	233	4.7	241	4.9		
5	BECK'S	6175 HXXRR2	HXX/RR2	10	237	4.8	18.9	0.7	237	4.3	232	6.2	242	1.7		
6	SPECIALTY HYBRIDS	86R70GENSSRIB *	GENSSRIB	4	238	4.1	16.8	0.7	236	4.6	234	3.8	245	1.4	248	0
7	SPECIALTY HYBRIDS	42D843	GENVT2PRIB	1	264	4.7	18.4	0.7	262	5	258	4.4	271	1.8	289	0
8	SPECIALTY HYBRIDS	43A703	GENSSRIB	5	238	4	16.6	0.7	232	3.9	244	3.7	240	1.3	246	6.2
9	SPECIALTY HYBRIDS	43A834	GENSSRIB	11	236	5	16.4	0.7	228	4.9	239	4.2	244	2.2	245	3.3
10	SPECIALTY HYBRIDS	87R10GENSSRIB *	GENSSRIB	12	233	5	18	0.7	227	5	238	4.6	236	2.6	244	5.7
11	SPECIALTY HYBRIDS	44A874	GENSSRIB	2	244	4.6	18.8	0.7	240	4.6	244	4.9	252	2.5	251	1.8
12	SPECIALTY HYBRIDS	88R14GENSS	GENSSRIB	6	238	4.5	20.5	0.7	234	4.1	241	4.2	243	1.9	251	8.8
				Field Avg	240		17.7	8.4	237		238		247		253	

Location: Fountain, Indiana
Cooperator: Dustin Linville
Planting Date: 04-24-2014
Harvest Date: 10-27-2014
Population: 34000 seeds/acre
Plot Type: Commercial - FTN
Rep: 879543568152134

VALUE ADDED TRAITS:

RR2 = Roundup Ready® Corn 2
VT3 = YieldGard VT Triple®
GENSS = Genuity® SmartStax®
GENVT3P = Genuity® VT Triple PRO®
GENVT2P = Genuity® VT Double PRO®
VTRR2 = YieldGard VT Rootworm/RR2®
GENSSRIB = Genuity® SmartStax® RIB Complete® Corn Seed Blend
GENVT2PRIB = Genuity® VT Double PRO® RIB Complete® Corn Seed Blend
DGVT3PRIB = Genuity® DroughtGard® Hybrids with VT Triple PRO® RIB Complete® Corn Blend
DGVT3P = Genuity® DroughtGard® Hybrids with VT Triple PRO® Corn
DGVT2PRIB = Genuity® DroughtGard® Hybrids with VT Double PRO® RIB Complete® Corn Blend
DGVT3P = Genuity® DroughtGard® Hybrids with VT Double PRO® Corn
DGRR2 = Genuity® DroughtGard® Hybrids with Roundup Ready® Corn 2

GENERAL:

N/A = Not Available


Individual results may vary, and performance may vary from location to location and from year to year. This result may not be an indicator of results you may obtain as local growing, soil and weather conditions may vary. Growers should evaluate data from multiple locations and years whenever possible. Always read and follow IRM, where applicable, grain marketing and all other stewardship practices and pesticide label directions. Leaf DesignSM is a servicemark of Monsanto Company. All other trademarks are the property of their respective owners. ©2014 Monsanto Company.

Monsanto Company is a member of Excellence Through Stewardship® (ETS). Monsanto products are commercialized in accordance with ETS Product Launch Stewardship Guidance, and in compliance with Monsanto's Policy for Commercialization of Biotechnology-Derived Plant Products in Commodity Crops. This product has been approved for import into key export markets with functioning regulatory systems. Any crop or material produced from this product can only be exported to, or used, processed or sold in countries where all necessary regulatory approvals have been granted. It is a violation of national and international law to move material containing biotech traits across boundaries into nations where import is not permitted. Growers should talk to their grain handler or product purchaser to confirm their buying position for this product. Excellence Through Stewardship® is a registered trademark of Biotechnology Industry Organization.

B.t. products may not yet be registered in all states. Check with your Monsanto representative for the registration status in your state.

IMPORTANT IRM INFORMATION: Genuity® RIB Complete® corn blend products do not require the planting of a structured refuge **except** in the Cotton-Growing Area where corn earworm is a significant pest. Genuity® SmartStax® RIB Complete®, Genuity® VT Double PRO® RIB Complete® and Genuity® VT Triple PRO® RIB Complete® corn are blended seed corn products. See the IRM/Grower Guide for additional information. Always read and follow IRM requirements.

ALWAYS READ AND FOLLOW PESTICIDE LABEL DIRECTIONS. Roundup Ready® crops contain genes that confer tolerance to glyphosate, the active ingredient in Roundup® brand agricultural herbicides. Roundup® brand agricultural herbicides will kill crops that are not tolerant to glyphosate. DroughtGard®, Genuity®, Genuity Design®, Genuity Icons, Genuity®, RIB Complete and Design®, RIB Complete®, Roundup Ready 2 Technology and Design®, Roundup Ready®, Roundup®, SmartStax and Design®, SmartStax®, VT Double PRO®, VT Triple PRO® and YieldGard VT Triple® are trademarks of Monsanto Technology LLC. LibertyLink and the Water Droplet Design® is a registered trademark of Bayer. Herculex® is a registered trademark of Dow AgroSciences LLC. Respect the Refuge and Corn Design® and Respect the Refuge® are registered trademarks of National Corn Growers Association. All other trademarks are the property of their respective owners. ©2014 Monsanto Company.



Before opening a bag of seed, be sure to read, understand and accept the stewardship requirements, **including applicable refuge requirements for insect resistance management**, for the biotechnology traits expressed in the seed as set forth in the Monsanto Technology/Stewardship Agreement that you sign. By opening and using a bag of seed, you are reaffirming your obligation to comply with the most recent stewardship requirements.

