



Walnut Hill

Early Childhood Center  
Goshen Day Care Board, Inc.

# Campaign for Walnut Hill Early Childhood Center's New Building

# Our Mission

Walnut Hill Early Childhood Center provides  
compassionate care and affordable  
early childhood education.





# Walnut Hill – The Beginning

- o The Walnut Hill Early Childhood program was launched in 1968 as a community's response to the growing needs of its youngest residents - young children
- o Local leaders and educators worked to create a program that is distinguished by:
  - o affordability through a sliding fee scale
  - o professional and educated teachers
  - o a family involvement component.

# Early Funding

- o Local Churches provided donations
- o United Way of Elkhart County - since 1972
- o Clubs and Individuals
- o Parent Fees

# Our Last Campaign

- 1991-1993 – the addition of 3 classrooms
- 20 year agreement with Assembly Mennonite Church
- Walnut Hill raised more than \$455,000



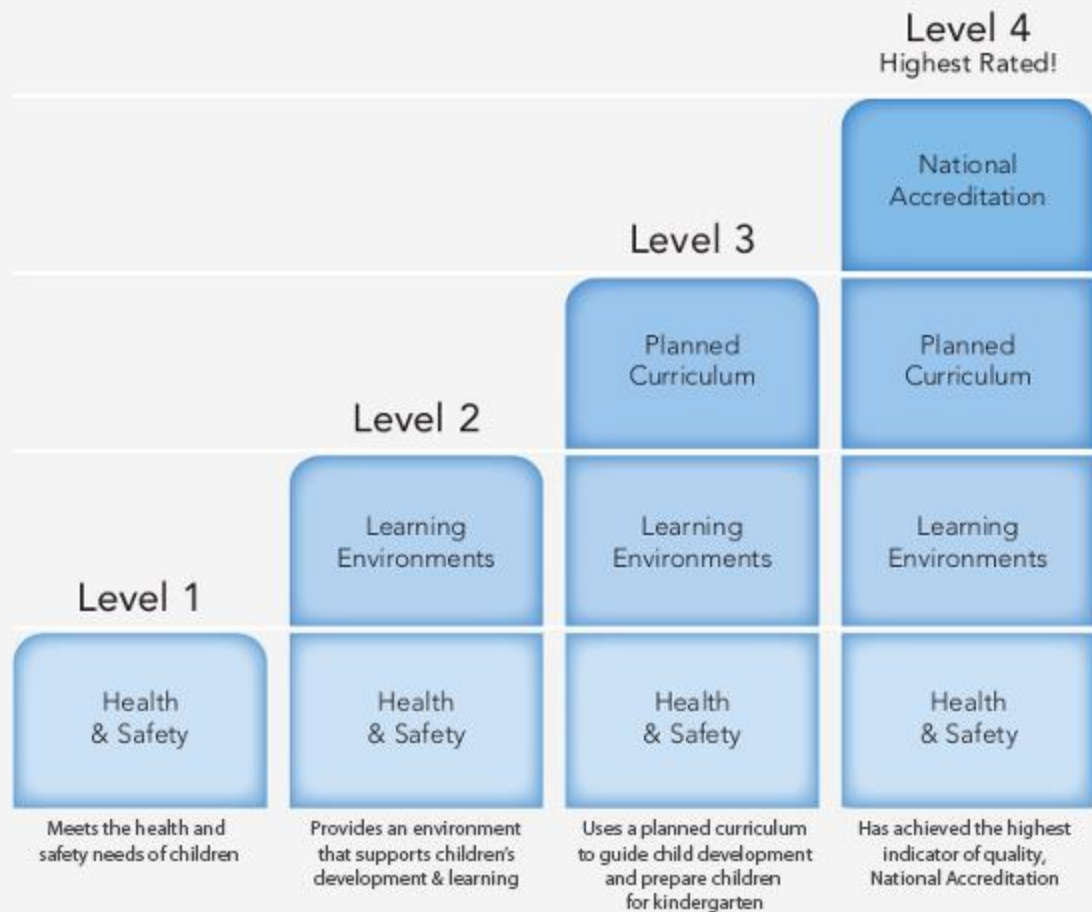
# Current Programming

- o 4 Preschool Classrooms
  - o Ladybugs (ages 2 ½ & 3 years) = 14 spots
  - o Dragonflies (3 year olds) = 18 spots
  - o Grasshoppers (3.5 – 5 year olds) = 20-24 spots
  - o Caterpillars (3.5 – 5 year olds) = 20-24 children

# Current Staffing

- o Executive Director
- o Family Services Coordinator
- o Community Engagement Coordinator (part time)
- o Office Manager
- o Kitchen Manager
  - o Kitchen Assistant (part time)
- o 4 Lead Teachers
  - o 8 Assistant Teachers
- o Janitorial Staff

# Paths To Quality

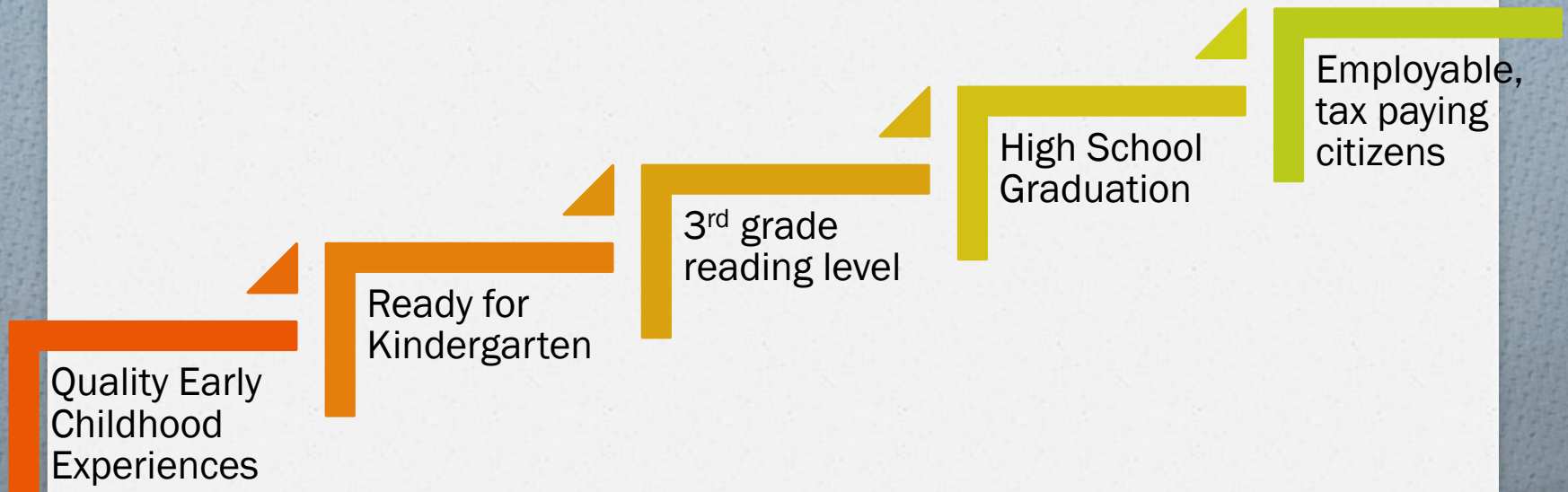




# Those We Serve

- Children between the ages of 2 ½ - 6 years
- 72-82 children can be enrolled at one time
- 75% of our families fall at or below 250% of poverty

# Early Investments – Our Motivation



# Our Challenge

- Currently we share space from Assembly Mennonite Church.
- We have 3 preschool classrooms and each week staff set up and tear down an additional classroom in the multipurpose room



# Our Current Space



# Our Challenge

- During the 2015-16 school year we had 54 preschool aged children on our wait list.
- More than half of the phone calls we receive from parents looking for child care are for children 0 – 3.



# Our Challenge

- We consistently struggle with having enough space to serve all of the children who need our services.





# Our Challenge

- o Security in shared space is a huge challenge.
  - o Often there are people who are strangers to our children walking through the building.
  - o When more people have access to the building, doors are more likely to be left open or unlocked.

# The Solution

- Walnut Hill Early Childhood Center has purchased a building on 2.87 acres one mile from our current location.
- Plan to renovate the existing space and build on an addition to house more classrooms.

# The Solution

- We are conducting a campaign to fund the new child care building.
- We are creating 2 additional classrooms, allowing us to serve more preschoolers and infants and toddlers.
- The new facility will allow us to provide exceptional services to our community's children and families.
- Goal - \$1.5 million



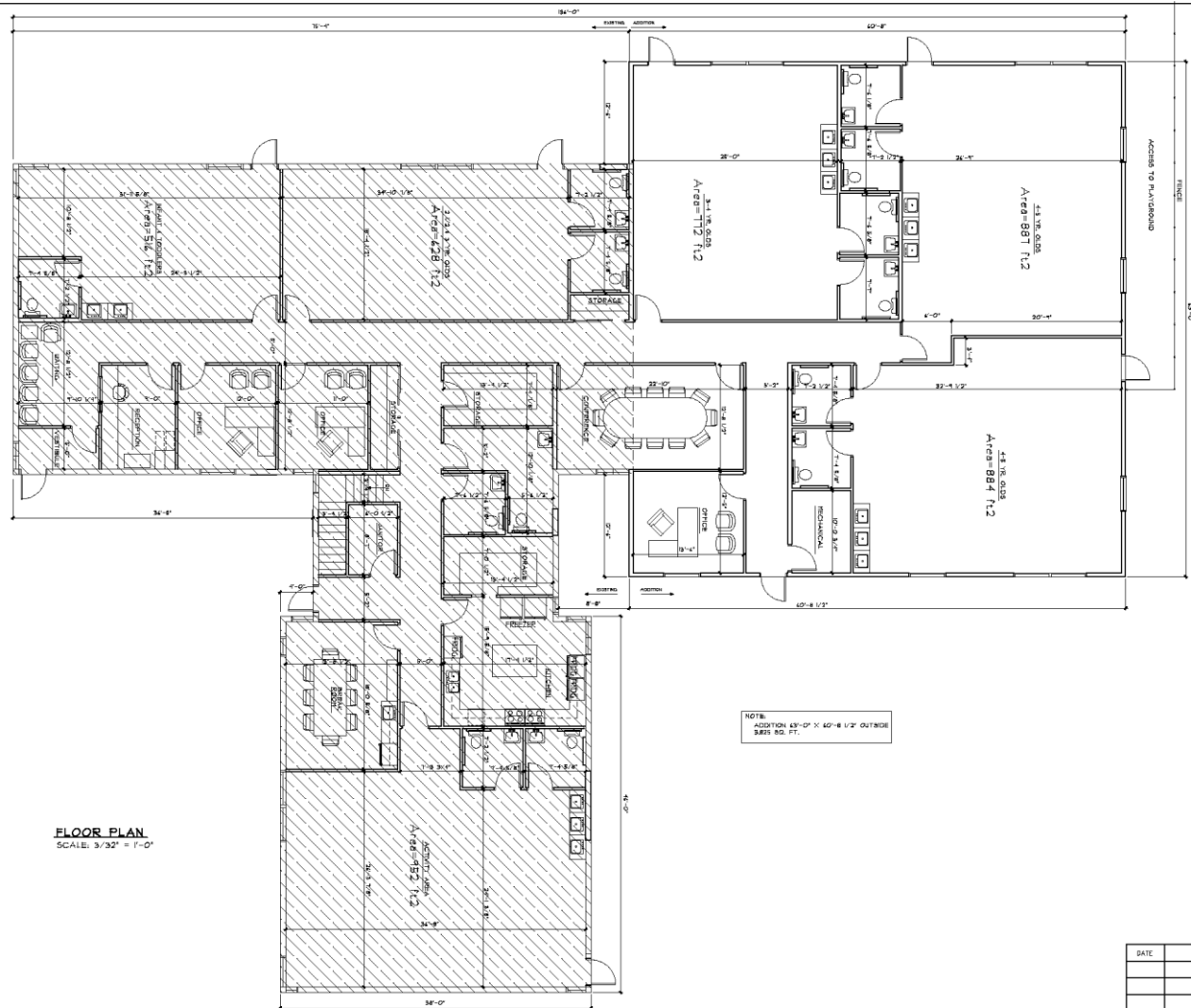
# Infant & Toddler Classroom



# Preschool Room







**FLOOR PLAN**  
SCALE: 3/32" = 1'-0"

NOTE:  
ADDITION 43'-0" X 40'-8 1/2" OUTSIDE  
3652 SQ. FT.

DATE	REVISION/ISSUE



# Capital Campaign Budget

Item	Amount	%Of Total Project
Purchase of land/building	\$350,000	23%
Renovation and Addition	\$600,000	40%
Furnishings and Equipment	264,000	18%
Cost to subsidize sliding fee scale for new classrooms (first year)	\$136,000	9%
Contingencies/Other Campaign Expenses	\$150,000	10%
<b>TOTAL</b>	<b>\$1,500,000</b>	<b>100%</b>

# Naming Opportunities

- o Preschool Classroom (4) - \$100,000
- o Two Year Old Classroom \$75,00
- o Infant & Toddler Classroom \$50,000
- o Preschool Playground (3) \$25,000
- o Infant Toddler Playground (1) \$25,000
- o Kitchen -\$20,000
- o Teacher Work Area/Curriculum Room \$15,000



They are  
**the reason**  
we are here

