

# Heartland Jerseys! 700 Head Sell!

**APPROX 580 JERSEYS AND 120 HOLSTEINS SELL! COMPLETE DISPERSAL!**  
**THURSDAY, APRIL 23 & FRIDAY, APRIL 24, 2015 • AT THE FARM • SENECA, KANSAS**  
**A PURE PRODUCTION EVENT • ELITE GJPI • DEEP COW FAMILIES • DON'T MISS IT!**



**Heartland Nathan Texas**  
**EX-95**  
 3-11 305 26,340 4.3 1130 3.8 991  
 The herd matriarch and 3rd gen EX! Many dtrs, gr'dtrs, & great-grdtrs sell. Of her 9 classified dtrs, 1 is EX, 8 VG, with records to 28,000 actual. Topeka, the leading udder bull, is one of her many sons in AI. Truly a Great Cow family!

**Heartland Impress Topanga-ET**  
**VG-83**  
 1-9 3x 305 18,790 5.1 954 4.0 750  
 TOPANGA SELLS and is due back in July! One of the lovely dtrs of the great brood cow, Texas.

**Heartland Topeka Tripoli-ET**  
**VG-85**  
 Yield dev +2163M +132F +51P  
 TRIPOLI SELLS, as does her NITRO daughter. Tripoli is bred to Harris.

**Heartland Topeka Athena-ET**  
**VG-86**  
 1-9 305 26,051 1334 924 ME proj  
 ATHENA SELLS! Her SANTANA dtr selling is the #2 POLLED hfr in the breed at GJPI +206 GJUI +17.5.

**Heartland Abe Sunshine**  
**VG-85**  
 3-11 3x 305 23,330 6.4 1503 4.2 971  
 Three daughters sell: A VG HEAD-LINE, two records over 20,000M actual; a VG DIMENSION testing 6.0% on first lactation; and a P9 GAMGEE due in August.



**Heartland Fastrack Jolene**  
**EX-91**  
 1-11 305 20,631 1033 751 ME proj  
 JOLENE SELLS along with her TROY daughter.

**Heartland Valentino Dianna**  
**EX-90**  
 3-1 3x 305 24,080 5.9 1420 4.1 987  
 DIANNA SELLS as do several family members.

**Heartland Topeka Mia**  
**VG-85**  
 3-2 3x 305 20,230 6.7 1363 3.9 786  
 MIA SELLS due in August to CHROME. Full sister to Madalyn!

**Heartland Topeka Madalyn-ET**  
**VG-87**  
 1-9 305 23,164 1209 869 ME proj  
 MADALYN SELLS along with tons of Marley family members.

**Norse Star Renegade Marley**  
**VG-83**  
 3-2 3x 305 20,230 6.7 1363 3.9 786  
 MARLEY SELLS along with her dtr Madalyn, pictured left.



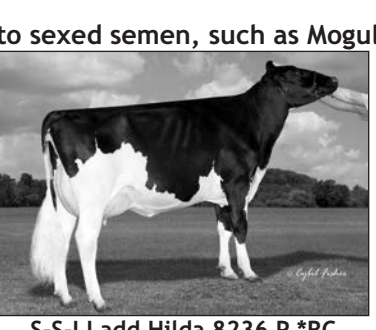
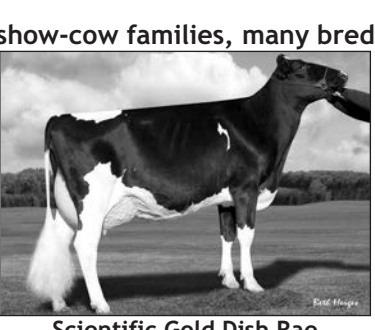
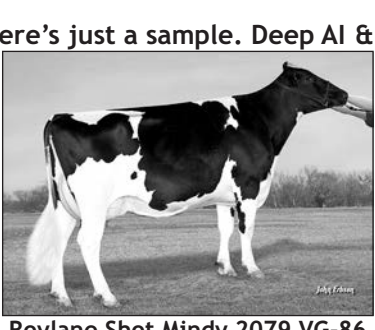
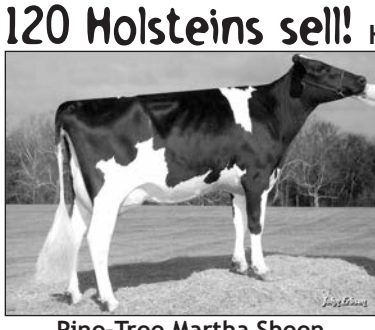
**Heartland Impuls Lavonne**  
**EX-91**  
 4-9 3x 305 22,730 6.1 1389 4.2 952  
 LAVONNE SELLS along with two daughters: a PHAROAH bred to ZIPPER; and a P7 NITRO yearling.

**Heartland Premier Unique**  
**VG-83**  
 1-8 3x 305 18,620 4.9 908 3.8 709  
 UNIQUE SELLS. She's due in June to CITATION A. Her CRITIQUE daughter also sells.

**Heartland Fastrack Hannah-ET**  
**VG-85**  
 1-8 305 23,851 1103 878 ME proj  
 HANNAH SELLS!

**Heartland Rubex Naomi-ET**  
**VG-88**  
 1-10 305 21,210 4.5 948 3.6 769  
 Her VG PREMIER daughter sells, as well as her P9 JAMMER daughter. Other family members also sell.

**Heartland Eclipse Nike**  
**VG-85**  
 1-11 3x 305 18,140 5.2 939 3.8 697  
 Four daughters sell: Three by SANTANA-P born in 2014 and a FOSTER due in October.



**Pine-Tree Martha Sheen**  
**VG-86 DOM**  
 1-11 365 31,210 4.2 1305 3.1 968  
 A 5/14 GTPI +2400 +755M +46F +2.24T +542NM Skymont sells. Dam is a VG-86 Mogul, 9th gen VG/EX back through Martha Sheen and the 3E-92 GMD DOM Rudy Missys!

**Roylane Shot Mindy 2079**  
**VG-86**  
 2-2 3x 305 28,730 4.4 1263 3.4 964  
 A 6/14 GTPI +2403 +72F +598NM +2.27T Headway sells. Dam GP-83 VG-MS 2Y Uno x VG-87 DOM Bookem x Mindy x Oman Mirror VG-86 DOM x Manat Mirage EX-90 GMD DOM x 2E-91 GMD DOM Minnow!

**Scientific Gold Dish Rae**  
**EX-90 DOM**  
 6-10 3x 365 44,700 3.8 1717 3.2 1447  
 She's an 8th gen EX Roxy from All-American Debutante Rae EX-92. A POLLED Shine yrlg sells from Dish Rae's GP-82 2Y Colt P.

**S-S-I Ladd Hilda 8236 P \*RC**  
**VG-85 VG-MS 2Y**  
 Hilda's POLLED GTPI +2041 Manuel yrlg sells. Next dams a Man-o-Man x Gld Holler VG-88 DOM, 7th gen VG/EX from the 2E-95 Dellias.

**S-S-I Mitey 7417-Red \*PP**  
**VG-85 VG-MS 2Y**  
 2-1 365 30,187 3.9 1194 3.0 926  
 Her three \*RC POLLED Shine yrlgs sell. Next dams VG-86 2Y, VG-89 2Y & VG-89 2Y in the Netherlands.

**DON'T MISS: GTPI +2414 Greenway yrlg; GTPI +2399 Hadwin yrlg; POLLED GTPI +1931 Ohare yrlg!**

## 120 Holsteins sell!

Here's just a sample. Deep AI & show-cow families, many bred to sexed semen, such as Mogul, Davinci, Supersire, Kingboy

Photo ordered AG

**700 HEAD SELL!**  
**THURSDAY, APRIL 23, 2015**  
**325 HEAD SELL: ALL MILK COWS, ALL DRY COWS, ALL 3RD-TRIMESTER BRED HEIFERS**  
 10 AM Jersey cows  
 11 AM Holsteins: 35 1st lactation cows and 10 springers  
 12 Noon: High-genomic Jersey cows  
 Balance of Jersey milk cows, dry cows and springers to follow

**FRIDAY, APRIL 24, 2015**  
**375 HEAD SELL: ALL HEIFERS**  
 10 AM Jersey heifers  
 11 AM Holsteins: 65 Holstein heifers  
 12 Noon: High-genomic Jersey heifers  
 Balance of Jersey heifers to follow

**Also selling!**  
 50 calf hutches • 150 12-foot corral panels

**Online bidding available**  
[www.JerseyAuctionLive.com](http://www.JerseyAuctionLive.com)

**CATALOG ONLINE:**  
[WWW.TRADITIONAUCTIONS.COM](http://WWW.TRADITIONAUCTIONS.COM)

**Sales force:**  
 Lynn Lee . . . . . 615-390-6312  
 Herby Lutz . . . . . 614-570-2444  
 Bob Morton . . . . . 931-842-1234  
 Chris Lundgren . . . . . 920-517-8947  
 Robert Yeoman . . . . . 405-880-2209  
 Dallas Burton . . . . . 785-379-9774  
 Ron Mosser . . . . . 614-264-0142  
 Greg Lavan . . . . . 614-216-8838  
 Erica Davis . . . . . 614-361-9716  
 Brad Barham . . . . . 423-368-3556

**JERRY AND SUE SPIELMAN**  
 1892 M Rd • Seneca KS 66538  
 785-336-2581 • 785-336-1695 cell • spielman@nvcs.com  
 Herdsman: Justin Edwards 785-336-1299 • ajustinedwards@gmail.com



Sale managed by: **TAS**  
**TRADITION AUCTION SERVICES, LLC**  
 TRAINED BY THE BEST TO BE THE BEST!  
 Murfreesboro, TN • 615-869-0029 • Firm Lic #5762  
 CATALOG ONLINE: [WWW.TRADITIONAUCTIONS.COM](http://WWW.TRADITIONAUCTIONS.COM)