

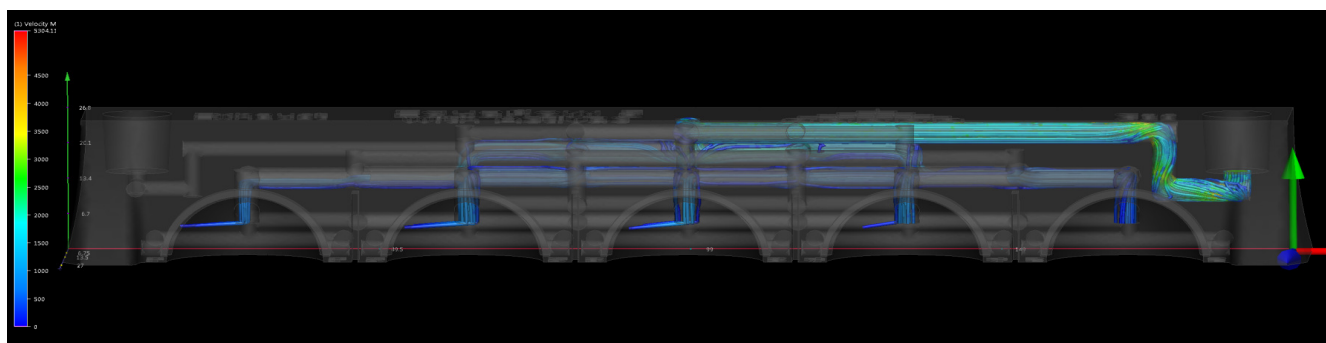
# Small Animal Anesthesia Manifolds

## Optical Preclinical Imaging



**EquaFlow™ Rat & Mouse Manifolds** from In Vivo Concepts are durable, plastic, nose cone assemblies with hyper-branching in order to provide equal flow of anesthesia to each port while also simultaneous scavenging waste gas. These manifolds insure that all animals remain anesthetized during imaging and most importantly, that researchers and technicians are not subjected to noxious, gaseous anesthesia during imaging experiments. The advantages of **EquaFlow™ Manifolds** are tangible features developed by our staff of Imaging Specialists from many years of small animal imaging experience:

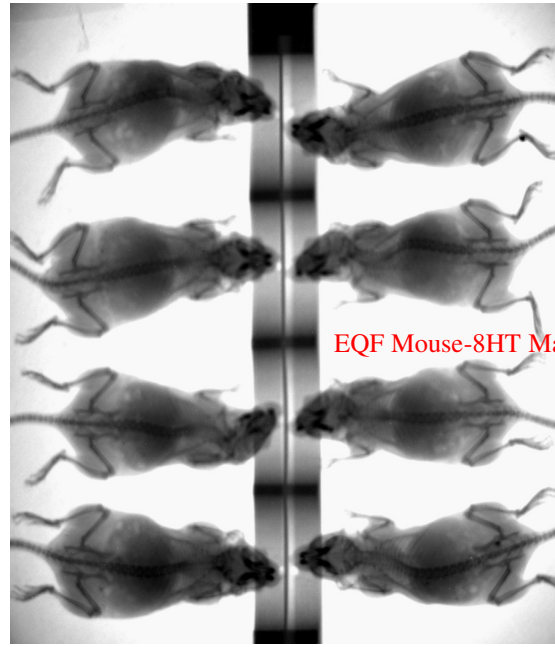
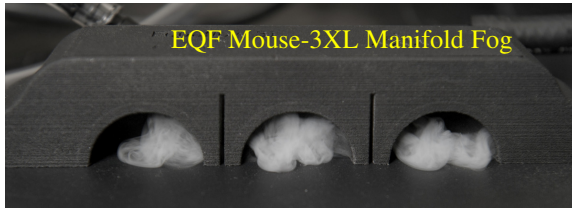
- **Single-Piece Design from Durable Non-Autofluorescent Plastic**
- **Integrated Hyper-Branching for Equal Anesthesia Flow & Waste Gas Scavenging**
- **Available in Single Port Design for Rats**
- **Available in 3-Port, 4-Port, 5-Port and 8-Port Designs for Mice**
- **Complete with Imaging Dividers, Empty-Port Blanks and**



Computational Fluid Dynamics drawing showing the intricate hyper-branch supply and scavenge plumbing of a Mouse-5 **EquaFlow™ Manifold**.

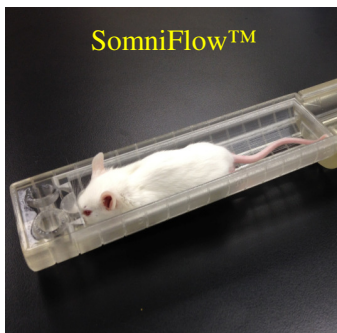
# EquaFlow™ Manifold Examples

Pictures showing just a few of the various manifold configurations available for mouse and rat imaging.



## EquaFlow™ Dimensional Data

<u>Manifold</u>	<u>Length</u>	<u>Width</u>	<u>Height</u>	<u>Distance Between Nose Ports</u>
EQF Rat-1	83mm	59mm	37mm	N/A
EQF Mouse-3XL	198mm	35mm	28mm	60mm
EQF Mouse-3IV	180mm	30mm	30mm	40mm
EQF Mouse-4	198mm	35mm	28mm	35mm
EQF Mouse-5	198mm	32mm	28mm	35mm
EQF Mouse-8 HT	198mm	35mm	28mm	35mm

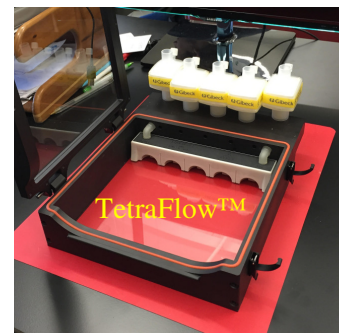


Rat & Mouse Beds



Preclinical Imaging Design & Development  
 South Bend, Indiana, USA  
 (909) 938-9470  
 invivoconcepts@gmail.com

[www.InVivoConcepts.com](http://www.InVivoConcepts.com)



Imaging Chambers