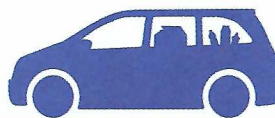
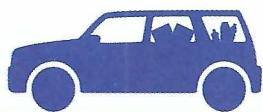


# 1st Saturday Drop-Off Days

## Somerset County Recycling Center

40 Polhemus Lane, Bridgewater

Open the first Saturday of each month from 8 AM to 2 PM



January 9, 2021\*

May 1, 2021

September 11, 2021\*

February 6, 2021

June 5, 2021

October 2, 2021

March 6, 2021

July 10, 2021\*

November 6, 2021

April 3, 2021

August 7, 2021

December 4, 2021

*\* Second Saturday of the month due to holiday*



### PROOF OF SOMERSET COUNTY RESIDENCY REQUIRED

*(current driver's license, valid lease, tax bill or any other bill with a Somerset County address)*

NO  
COMMERCIAL  
VEHICLES



## ACCEPTABLE RECYCLABLES

Newspaper • Magazines • Junk mail & other paper • Corrugated cardboard  
Phone books • Shredded paper • All plastic bottles & containers #1 - #7 • Microwave ovens  
Aluminum, steel & bi-metal cans • Chipboard • Used motor oil & oil filters\* • Antifreeze\*  
**Empty, dried-out** steel paint cans • Glass bottles • Scrap metal\*\* • Passenger tires\*\*\*

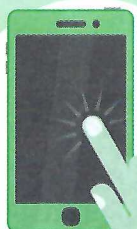
*\* 5 gallon maximum. \*\*NO refrigerators, air conditioners, humidifiers or dehumidifiers (call 908-231-7109 for information). \*\*\* Limit of 8 tires with or without rims.*

**NOTE:** Please continue to recycle your used textiles at any local charity donation location.

**Electronic Waste – See Page 3**

**For information, call the Recycling Center at 732-469-3363**

## Sign Up for Recycle Coach!



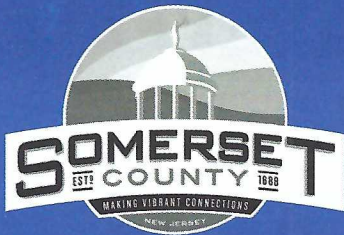
**Download the Recycle Coach™ App so you can access:**

- Your Recycling Schedule
- Pick up Reminders
- "What Goes Where" search tool
- And more!

Go to [www.co.somerset.nj.us/recycle-coach](http://www.co.somerset.nj.us/recycle-coach) for info.







Due to the pandemic,  
all dates are subject  
to change.

Please check our website  
for the most  
up-to-date information  
on all recycling events:

[www.co.somerset.nj.us/recycle](http://www.co.somerset.nj.us/recycle)

# 2021 SOMERSET COUNTY RECYCLING SCHEDULE

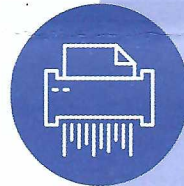
Here are your **2021** recycling collection schedule  
and calendar stickers. Please use the stickers to  
mark your town's recycling pickup dates  
on your home calendar.

County-issued recycling  
containers must be used for your  
recycling. For more information,  
call **732-469-3363** or email  
[recyclingdiv@co.somerset.nj.us](mailto:recyclingdiv@co.somerset.nj.us)



## Sign Up for Recycle Coach™!

[www.co.somerset.nj.us/recycle-coach](http://www.co.somerset.nj.us/recycle-coach)



## Prevent Identity Theft! FREE DOCUMENT SHREDDING

For more information, call  
**908-203-6018**  
or visit <http://bit.ly/SCShred>



## Christmas Tree Recycling Dropoff

For information, visit :  
[www.somersetcountyparks.org](http://www.somersetcountyparks.org)  
or call **908-722-1200, ext. 5721**



## Year Round Food Donations!

Please put **CANNED** food donations in any  
plastic grocery bag & place them at the curb  
on your recycling pickup days, or  
bring to 1st Saturday Drop-Off Days.

**CANNED GOODS ONLY**

**NO Glass • NO Perishables**

Questions? Call **732-469-3363**

Property of



## 2020 Somerset County Board of Chosen Freeholders

Shanel Y. Robinson, Director • Sara Sooy, Deputy Director  
Brian D. Levine • Brian G. Gallagher • Melonie Marano

[www.co.somerset.nj.us/recycle](http://www.co.somerset.nj.us/recycle)

Printed on Recycled Paper with Soy-based Inks







## Electronic Waste Recycling

### Weekday DROP-OFF

**Monday - Friday • 7:30 AM - 3 PM**

#### South County Public Works

410 Roycefield Road  
Hillsborough, NJ 08844

#### North County Public Works

411 Chimney Rock Road – Bldg. B  
Bridgewater, NJ 08807

### Saturday DROP-OFF

**8 AM - 2 PM**

#### South County Public Works

410 Roycefield Road  
Hillsborough, NJ 08844

<b>January 9*</b>	<b>May 1</b>	<b>September 11*</b>
<b>February 6</b>	<b>June 5</b>	<b>October 2</b>
<b>March 6</b>	<b>July 10*</b>	<b>November 6</b>
<b>April 3</b>	<b>August 7</b>	<b>December 4</b>

\* Second Saturday of the month due to holiday

**Items accepted:** **Computers** (Desktops & Laptops), **Monitors** (Cathode-Ray Tube & Flat Panel), Cables, Circuit Boards, Keyboards, Mainframe Equipment & Controllers, Mice, Modems, Power Supplies, Printers, Scanners, Wiring, Copiers, Fax Machines, Typewriters, Audio Visual Equipment, Camcorders, Digital Cameras, E-book Readers, MP3 Players, Personal Digital Assistants (PDAs), Stereo and Radio Equipment.

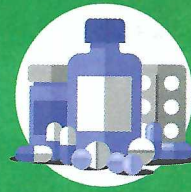
**Televisions** (Cathode-Ray Tube & Flat Panel), DVD players, VCRs, Telecommunication Equipment (Telephones, Cellular Phones), Telephone Mainframes.

**Items NOT accepted:** Cassette Tapes, CDs, DVDs, VHS Tapes, Household Batteries (Household batteries may be put in the regular trash. For other batteries, see Household Hazardous Waste Days on the back page).



#### PROOF OF SOMERSET COUNTY RESIDENCY REQUIRED

(current driver's license, valid lease, tax bill or any other bill with a Somerset County address)



## Proper Disposal of Rx Medications

**Project Medicine Drop** is a medicine-collection program sponsored by the Somerset County Sheriff's Office, the Somerset County Solid Waste Management Division and the U.S. Drug Enforcement Administration. Residents can bring medications to the **Household Hazardous Waste Drop-off events** (see page 4) that are held at different locations around the county for their convenience.

Medications should be dropped off in their original packages or bottles with personal information such as name and address removed. The name of the medication should be visible.

**Illegal drugs, needles or sharps should not be brought to the drop-offs.**

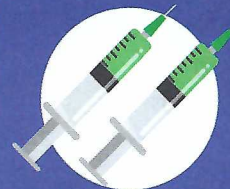
#### Somerset County Sheriff's Office

Administration Building - Lower Level  
20 Grove Street, Somerville, NJ 08876

**908-231-7140**

[www.co.somerset.nj.us/medwaste](http://www.co.somerset.nj.us/medwaste)

[www.NJConsumerAffairs.gov/meddrop](http://www.NJConsumerAffairs.gov/meddrop)



## Home- Generated Medical Waste

Many hospitals participate in the New Jersey Hospital Association's Safe Syringe Program. Hospitals provide sharps containers that the home generator returns to the hospitals when the container is full. Contact the hospitals listed below or visit our website for more information:

[www.co.somerset.nj.us/medwaste](http://www.co.somerset.nj.us/medwaste)

- **St. Peter's Hospital-New Brunswick • 732-745-8600**
- **Robert Wood Johnson University Hospital - Somerset**  
**908-685-2800 • Monday - Friday, 9:00 AM - 5:00 PM**  
**Must be in hard plastic containers. Empty needles only.**

**NOTE: NO needles should ever be put in any type of container and placed out for recycling collections.**

*This is very dangerous to all personnel handling recycling collections.*

**Do not bring needles to  
Household Hazardous Waste collections!**





# 2021 HOUSEHOLD HAZARDOUS WASTE DAYS

For more information on  
HHW Days & locations  
call 908-231-7031



## Five 2021 Household Hazardous Waste Drop-offs 9 AM - 2 PM



**Bernards Township  
Public Works Garage**  
277 South Maple Avenue  
Basking Ridge, NJ 07920



**Warren Township  
Public Works Garage**  
1 Bardy Road  
Warren, NJ 07059



**South County  
Public Works Garage**  
410 Roycefield Road  
Hillsborough, NJ 08844

**NEW  
LOCATION!**



**Branchburg Township  
Public Works Garage**  
34 Kenbury Road  
Branchburg, NJ 08876



**South County  
Public Works Garage**  
410 Roycefield Road  
Hillsborough, NJ 08844

## Who CAN Participate?



**All Somerset County  
homeowners and  
farmers.**



### PROOF OF SOMERSET COUNTY RESIDENCY REQUIRED

(current driver's license,  
valid lease, tax bill or  
any other bill with a  
Somerset County address)



Waste will **NOT** be  
accepted from  
commercial vehicles.

## What CAN be collected?

- Ammonia-based cleaners
- Auto products (5 gallon maximum):  
Motor oil, antifreeze, transmission  
fluids, brake fluids, wet-cell car  
batteries & used oil filters
- Banned or outdated pesticides
- Fire extinguishers
- Fluorescent tubes & compact  
fluorescent lights (unbroken)
- Gasoline
- Kerosene
- Mercury switches
- Mercury
- Oil-based paints
- Pool chemicals
- Propane tanks
- Rechargeable & button-cell batteries  
(Individually bag each battery or tape  
each terminal end prior to transport)
- Used cooking oil
- Wastes only in their original,  
labeled containers



## What CANNOT be collected?

- 2, 4, 5-TP (Silvex)
- 55 gallon drums
- Air conditioners/  
dehumidifiers  
(any refrigerant)
- Carbon monoxide detectors
- Dioxins
- Electronic waste
- Explosives
- Gas cylinders (oxygen)
- Helium tanks
- Humidifiers
- Infectious waste
- Latex/Water-based  
paint\*
- Needles
- PCBs
- Pentachlorophenol
- Smoke alarms
- Tires
- Unknown or  
unidentified material

\*To dispose of Latex/Water-based paint:  
[www.co.somerset.nj.us/recycle/paint](http://www.co.somerset.nj.us/recycle/paint)







# SOMERSET COUNTY CURBSIDE RECYCLING HOW-TO GUIDE



## DUAL STREAM TOTE PROGRAM

**FOLLOW THESE INSTRUCTIONS IF YOU HAVE RECEIVED TWO-WHEELED RECYCLING TOTES.**

The Somerset County Recycling Division is phasing in this program one area at a time.  
Residents will be provided with two 65-gallon wheeled recycling totes over the next few years.

Each tote has a different color lid (yellow and lime green). Stickers on the lids indicate what materials are to be placed in the totes.

Regular scheduled pickups with the new totes **will begin on your next scheduled recycling date after** delivery of totes.

The tote with the **lime green lid** is for the cardboard and paper products,  
and the tote with the **yellow lid** is for commingled glass, cans, and plastic materials.

**Accepted items are as follows for the paper tote (lime green lid):** Newspapers, inserts, junk mail, magazines, catalogs, envelopes, paperback books, corrugated cardboard, colored paper, clean pizza boxes, office and school papers, shredded paper (loose), chipboard boxes including cereal, cookie, pasta, cake, cracker, detergent (remove plastic liners), gift, shoe, shirt and any retail boxes, paper egg cartons, paper bags, books (hard covers must be removed), phone books, non-metallic gift wrap and greeting cards.

**Accepted items are as follows for the commingled tote (yellow lid):** Aluminum, steel and bimetal cans, glass bottles (all colors), glass jars (all colors), plastic bottles and containers #1 - #7 (Examples: water, soda, milk, juice, soap, detergent, bleach, shampoo, and cleaning-agent bottles). You may also include peanut butter, yogurt and diaper-wipe containers, margarine tubs, plastic trays and clear plastic clamshell containers from restaurant salad bars.





# 20-GAL. BLUE BUCKET PROGRAM

**FOLLOW THESE INSTRUCTIONS IF YOU ARE STILL USING THE SMALLER BLUE 20-GALLON RECYCLING BUCKET**

## GLASS BOTTLES, ALL PLASTIC BOTTLES & CONTAINERS (#1 - #7), STEEL, BIMETAL & ALUMINUM CANS

These items should be rinsed thoroughly and placed **inside** your recycling bucket. Crush all plastic bottles to save space. Remove caps. **Acceptable items:**

- Glass bottles (all colors)
  - Glass jars (all colors)
  - Steel cans
  - Bimetal cans
  - Aluminum cans
  - All plastic bottles and containers #1 - #7
- NO STYROFOAM®**
- #1 - #7 Examples:** Water, soda, milk, juice, soap, detergent, bleach, shampoo and cleaning-agent bottles. You may also include peanut butter, yogurt and diaper-wipe containers, margarine tubs, and clear plastic clamshell containers from restaurant salad bars.

## CORRUGATED CARDBOARD, CHIPBOARD & PIZZA BOXES

*Corrugated cardboard must be cut into 2 ft. x 2 ft. squares and tied with string or twine.* Please include pizza boxes & chipboard with corrugated cardboard. Place tied bundle (pizza boxes, chipboard & cardboard) **next to** your recycling bucket. **Acceptable items:**

- Brown bags
- Chipboard boxes including: cereal, cookie, pancake, cracker, detergent (remove plastic liners), gift, shoe, shirt and any retail boxes. Poster board & backing from writing pads also accepted.
- Corrugated cardboard
- Paper towel rolls
- Pizza boxes (clean!)
- Tissue boxes

Make sure all recyclables are as clean as possible to deter pests & odors.

## OTHER PAPER/JUNK MAIL

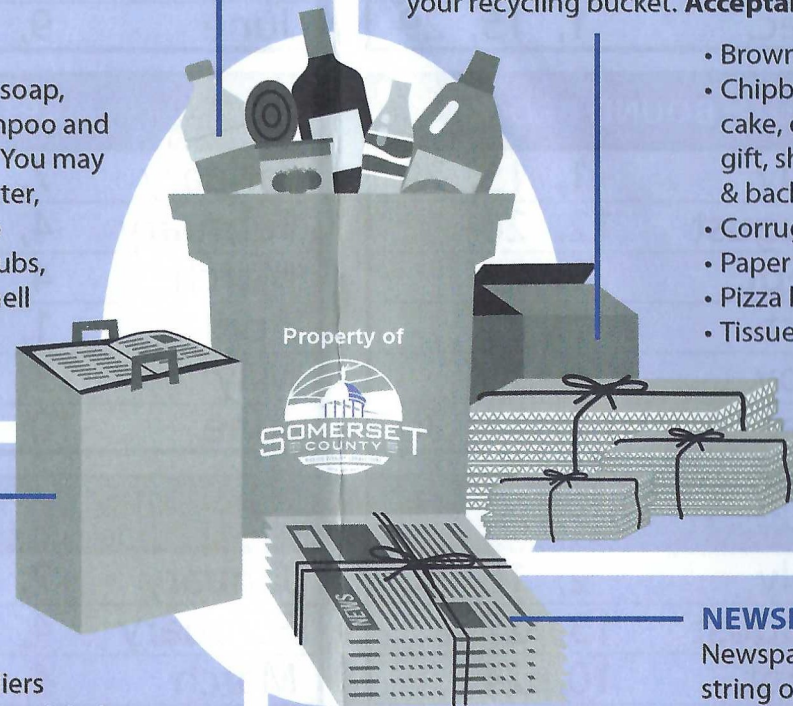
Other paper should be placed in a brown paper bag or cardboard box and placed **next to** your blue bucket. *Shredded paper must be in clear or labeled plastic bags.* **Acceptable items:**

- |                        |   |                                  |
|------------------------|---|----------------------------------|
| • Magazines            | • Hardcover books w/hard covers removed | • Store fliers w/mailling labels |
| • Writing/school paper | • Catalogs                              | • Office paper                   |
| • All envelopes        | • Phone books                           | • Non-metallic gift wrap         |
| • Copy paper           |   | • Greeting cards                 |
| • Paperback books      |   | • Shredded paper                 |

## NEWSPAPERS

Newspapers must be bundled and tied with string or twine. Place tied bundles **next to** your blue bucket. **Acceptable items:**

- Newspaper
- Inserts that come w/newspapers, such as comics, glossy coupons, TV/magazine sections & colored food/store ads





# WHAT **NOT** TO RECYCLE CURBSIDE...

**PLASTIC:** Un-numbered plastics • Microwave trays • Plastic bags • Motor oil and antifreeze bottles • Plastic toys  
Plastic cups, plates, knives, forks, spoons • Plastic flower pots • Beer balls • Pesticide containers • Paper plates  
Plastic coat hangers • Plastic drums & crates • Styrofoam® • 5-gallon buckets (*spackle & paint containers*)  
Pool chemical containers • Plastic caps • Prescription bottles • Garbage cans • Kitty litter containers

**PAPER:** Waxed paper • Tissue paper • Napkins • Paper towels • Frozen food boxes • Cups  
Metallic & plastic-coated paper • Paper with metal objects (*file folders, binders, etc.*)

**APPLIANCES:** Refrigerators • Air Conditioners • Dehumidifiers • Humidifiers (*call 908-231-7109 for information*)

**FIRE EXTINGUISHERS:** Bring to Household Hazardous Waste Days

**BATTERIES:** Alkaline go in garbage • Bring rechargeable & button-cell batteries to Household Hazardous Waste Days

**TEXTILES:** Take clothing, linens, drapes and other textiles to any local nonprofit collection bin

Recyclables are the property of Somerset County when placed at the curb. Please notify your local police department or the Somerset County Recycling Center if anyone other than county employees remove recyclables from your curb. Theft of recyclable materials is illegal.

Please  
do not mix  
garbage  
in with your  
recyclables.

