



**CUSTOM ORDER
INFORMATION**



Custom order form for Jewelry Design Services

Name: _____ Address: _____
Cell Phone: _____ City: _____
Email: _____ State: _____ Zip: _____

When ordering a custom piece there are several things to think about, therefore we have created a process to address these steps. They may not be totally inclusive so please add more information where you feel the need to explain in better detail. Custom orders may take up to 4 - 6 weeks for your once project is approved --Please CIRCLE all items that apply to your custom piece. Please create only one custom piece per form.

Step 1. Bezel Shape and Size

Shape: Square Oval Rectangle Circle Star Heart Other: _____
Internal dimensions of the bezel: Tall: _____ Wide: _____ Inches or Millimeters

Step 2. Bezel Depth inside (in millimeters)

Flat 2 3 4 5 6 Custom: _____

Step 3. Bezel Wall Thickness (Top view)

Approximate sizes(choose only one): .5-1mm 1-1.50 1.5-2.0 2.0-2.5

Step 4. Type of Finish of Final Product

.925 Sterling Silver / Silver Overlay i.e. Plated / Solid Copper / Solid Brass / Other _____

Step 5. Decide the type of Jewelry piece to make your bezel into.

A) Ring (Choose only one)

Adjustable at top of finger

Adjustable at bottom of finger

Fixed size 4 5 6 7 8 9 10 11 12

B) Pendant (Choose one type and one Position. If using our samples select gauge and Loop #.)

Type of Bail/ Loop: (Circle / Band Number: _____ Letter: _____) Custom: _____

Position of Bail: Center or Corner / Top / Bottom / Top and Bottom / Vertical or horizontal

C) Earring

Dangle / Post (if the shape is a rectangle or other long shape it will hang vertical)

D) Broach style (open and close with a circle closure at the tip of the sharp end)

Hanging position of the bezel: Horizontal / Vertical

E) Lapel Pin (Straight pin with a backing. I.E. Tie tack style pin) will hang vertical.

F) Cuff Links

G) Cuff Bracelet

Direction of the Bezel: Down wrist with arm / Across the wrist(recommended direction)

H) Linked Bracelet

How Bezels are connected: On sides, like Base Elements / Underneath, like Designer's Collection

I) Ribbon Slides

Position of the slides: Sides of the Piece / Under the Bezel

J) Button Shank on the bottom of the bezel(U shaped metal at bottom to connect button)

Step 6. Totally Custom Piece w/ an Attached drawing

For this please add a detailed drawing with dimensions of your design.

Internal use only:

Date order received:

Po #

Date submitted/faxed:

Invoice number:

Date product received:

Drawing attached: yes / No

Date product delivered to customer:

Store #

Order Taken by:

TEXTURED WIRES

(Measurements are width x height)

3.40 x 1.65 mm



3.65 x 1.35 mm



3.00 x 1.40 mm



3.32 x 1.70 mm



2.90 x 2.10 mm



3.10 x 1.60 mm



3.30 x 1.90 mm



3.35 x 1.65 mm



2.15 x 4.10mm



1.50 x 3.90mm



2.20 x 4.00mm



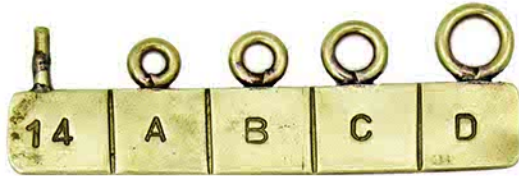
TEXTURED WIRES

(Measurements are width x height)



LOOP BAIL SAMPLES

(GUAGE & SIZE REFFERENCE)



TAPERED BAILS

HOW TO CHOOSE THE BAIL SIZE:

1.- Measure widths at the top and bottom

2.- Measure height from top to bottom

3.- Measure width of opening



NEXT CHOOSE STYLE OF BAIL

FIXED

PIECE IS SOLDERED DIRECTLY TO THE BAIL:



LOOSE

PIECE MOVES FREELY AT BOTTOM OF BAIL



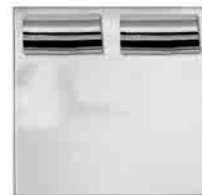
Loop w/ Taper



Hinged



TUBE BAIL



TEXTURED WIRES

(Measurements are width x height)

7.10 x 1.75 mm



7.82 x 1.65 mm



3.05 x 1.55 mm



3.48 x 1.50 mm



3.30 x 1.70 mm



TEXTURED PLATES

PURCHASE "AS IS", OR USE IN FINISHED PRODUCT
(width x length)



525
2X6 inches



536
3 inches
(Circle)



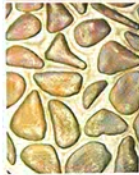
526
3 inches
(Circle)



537
2.25X6 inches



547
2.25X6 inches



527
2.25X6 inches



539
2.25X6 inches



548
3.5 inches
(Circle)



528
2.25X6 inches



540
2.25X6 inches



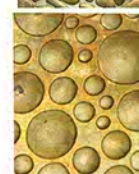
549
3 inches
(Circle)



535
3 inches
(Circle)



541
2.25X6 inches



551
2X6 inches



534
2.25X6 inches



545
2X6.30 inches



552
2X6 inches



546
2.25X6 inches



554
2.25X6 inches



553
2.25X6 inches

Continuous Sheets



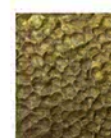
538
2.36"X continuous



542
2.36"X continuous



543
2.36"X continuous



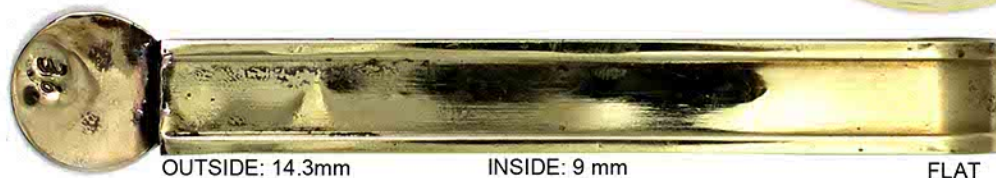
544
2.36"X continuous



CHANNEL WIRES (CONTINUOUS LENGTH)



36



OUTSIDE: 14.3mm

INSIDE: 9 mm

FLAT

35



OUTSIDE: 13.2mm

INSIDE: 8 mm

FLAT

34



OUTSIDE: 11.5mm

INSIDE: 5.5 mm

CURVE

33



OUTSIDE: 10.2 mm

INSIDE: 4 mm

CURVE

32



OUTSIDE: 9.9 mm

INSIDE: 4.5 mm

FLAT

31



OUTSIDE: 9 mm

INSIDE: 3 mm

CURVE

30



OUTSIDE: 9 mm

INSIDE: 3.5 mm

FLAT

29



OUTSIDE: 8 mm

INSIDE: 2.5 mm

FLAT

28



OUTSIDE: 8 mm

INSIDE: 2 mm

CURVE

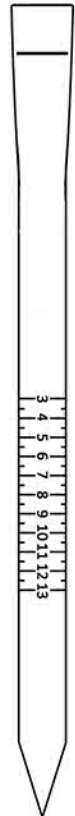
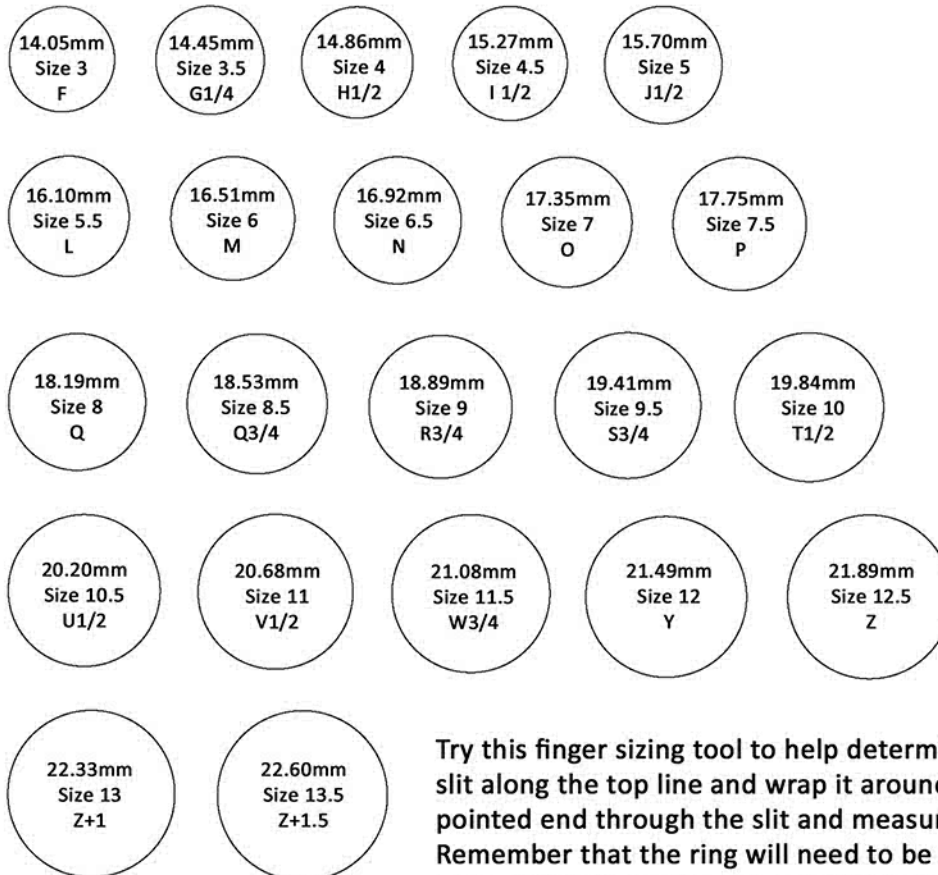


THE OFFICIAL INTERNATIONAL RING SIZE CONVERSION CHART

SIZING TOOL

Use the circles below to judge sizes against your existing rings. Make sure you line the circles up below with the inside of your band to get an idea of size.


Cut Out



Try this finger sizing tool to help determine your ring size. Cut a slit along the top line and wrap it around your finger pushing the pointed end through the slit and measuring the size there. Remember that the ring will need to be snug but will still need to fit over the largest part of your finger.

Please ensure that you are printing at 100% when printing this page and that it is not being shrunk to fit on the page.

International Ring Size Conversion Chart

Inside Diameter		Inside Circumference		Sizes					
MM	Inches	MM	Inches	British & Australian	US & Canada	French & Russian	German	Japanese	Swiss
9.91	0.390	31.13	1.22	-	0000	-	-	-	-
10.72	0.442	33.68	1.39	-	00	-	-	-	-
11.53	0.454	36.22	1.43	-	0	-	-	-	-
11.95	0.474	37.54	1.49	A	1/2	-	-	-	-
12.18	0.482	38.26	1.51	A 1/2	3/4	-	-	-	-
12.37	0.487	38.86	1.53	B	1	-	-	1	-
12.60	0.496	39.58	1.56	B 1/2	1 1/4	-	-	-	-
12.78	0.503	40.15	1.58	C	1 1/2	-	-	-	-
13.00	0.512	40.84	1.61	C 1/2	1 3/4	-	-	-	-
13.21	0.520	41.50	1.63	D	2	41 1/2	13 1/2	2	1 1/2
13.41	0.528	42.13	1.66	D 1/2	2 1/4	-	-	-	-
13.61	0.536	42.76	1.68	E	2 1/2	42 3/4	13 3/4	3	2 3/4
13.83	0.544	43.45	1.71	E 1/2	2 3/4	-	-	-	-
14.05	0.553	44.14	1.74	F	3	44	14	4	4
14.15	0.557	44.45	1.75	F 1/2	3 1/8	-	-	-	-
14.25	0.561	44.77	1.76	F 3/4	3 1/4	-	-	-	-
14.36	0.565	45.11	1.77	G	3 3/8	45 1/4	-	5	5 1/4
14.45	0.569	45.40	1.79	G 1/4	3 1/2	-	14 1/2	-	-
14.56	0.573	45.74	1.80	G 1/2	3 5/8	-	-	6	-
14.65	0.577	46.02	1.81	H	3 3/4	46 1/2	-	-	6 1/2
14.86	0.585	46.68	1.84	H 1/2	4	-	15	7	-
15.04	0.592	47.25	1.86	I	4 1/4	47 3/4	-	-	7 3/4
15.27	0.601	47.97	1.89	I 1/2	4 1/2	-	15 1/4	8	-
15.40	0.606	48.38	1.90	J	4 5/8	49	15 1/2	-	9
15.53	0.611	48.79	1.92	J 1/4	4 3/4	-	-	-	-
15.70	0.618	49.32	1.94	J 1/2	5	-	15 3/4	9	-
15.80	0.622	49.64	1.95	K	5 1/8	50	-	-	10
15.90	0.626	49.95	1.97	K 1/4	5 1/4	-	-	-	-
16.00	0.630	50.27	1.98	K 1/2	5 3/8	-	-	10	-
16.10	0.634	50.58	1.99	L	5 1/2	51 3/4	16	-	11 3/4
16.30	0.642	51.21	2.02	L 1/4	5 3/4	-	-	-	-
16.41	0.646	51.55	2.03	L 1/2	5 7/8	-	-	-	-
16.51	0.650	51.87	2.04	M	6	52 3/4	16 1/2	12	12 3/4
16.71	0.658	52.50	2.07	M 1/2	6 1/4	-	-	-	-
16.92	0.666	53.16	2.09	N	6 1/2	54	17	13	14
17.13	0.674	53.82	2.12	N 1/2	6 3/4	-	-	-	-
17.35	0.683	54.51	2.15	O	7	55 1/4	17 1/4	14	15 1/4
17.45	0.687	54.82	2.16	O 1/2	7 1/4	-	-	-	-
17.75	0.699	55.76	2.20	P	7 1/2	56 1/2	17 3/4	15	16 1/2

Continue...

17.97	0.707	56.45	2.22	P 1/2	7 3/4	-	-	-	-
18.19	0.716	57.15	2.25	Q	8	57 3/4	18	16	17 3/4
18.35	0.722	57.65	2.27	Q 1/2	8 1/4	-	-	-	-
18.53	0.729	58.21	2.29	Q 3/4	8 1/2	-	18 1/2	17	-
18.61	0.733	58.47	2.30	R	8 5/8	59	-	-	19
18.69	0.736	58.72	2.31	R 1/4	8 3/4	-	-	-	-
18.80	0.740	59.06	2.32	R 1/2	8 7/8	-	-	-	-
18.89	0.748	59.34	2.35	R 3/4	9	-	19	18	-
19.10	0.752	60.00	2.36	S	9 1/8	60 1/4	-	-	20 1/4
19.22	0.757	60.38	2.38	S 1/4	9 1/4	-	-	-	-
19.31	0.760	60.66	2.39	S 1/2	9 3/8	-	-	-	-
19.41	0.764	60.98	2.40	S 3/4	9 1/2	-	19 1/2	19	-
19.51	0.768	61.29	2.41	T	9 5/8	61 1/2	-	-	21 1/2
19.62	0.772	61.64	2.43	T 1/4	9 3/4	-	-	-	-
19.84	0.781	62.33	2.45	T 1/2	10	-	20	20	-
20.02	0.788	62.89	2.48	U	10 1/4	62 3/4	-	21	22 3/4
20.20	0.797	63.46	2.50	U 1/2	10 1/2	-	20 1/4	22	-
20.32	0.800	63.84	2.51	V	10 5/8	63	-	-	23 3/4
20.44	0.805	64.21	2.53	V 1/4	10 3/4	-	-	-	-
20.68	0.814	64.97	2.56	V 1/2	11	-	20 3/4	23	-
20.76	0.817	65.22	2.57	W	11 1/8	65	-	-	25
20.85	0.821	65.50	2.58	W 1/4	11 1/4	-	-	-	-
20.94	0.824	65.78	2.59	W 1/2	11 3/8	-	-	-	-
21.08	0.830	66.22	2.61	W 3/4	11 1/2	-	21	24	-
21.18	0.834	66.54	2.62	X	11 5/8	66 1/4	-	-	26 1/4
21.24	0.836	66.73	2.63	X 1/4	11 3/4	-	-	-	-
21.30	0.839	66.92	2.64	X 1/2	11 7/8	-	-	-	-
21.49	0.846	67.51	2.66	Y	12	67 1/2	21 1/4	25	27 1/2
21.69	0.854	68.14	2.68	Y 1/2	12 1/4	-	-	-	-
21.89	0.862	68.77	2.71	Z	12 1/2	68 3/4	21 3/4	26	28 3/4
22.10	0.870	69.43	2.73	Z +1/2	12 3/4	-	-	-	-
22.33	0.879	70.15	2.76	Z+1	13	-	22	27	-
22.60	0.890	71.00	2.80	Z+1.5	13.5	-	-	-	-
22.69	0.893	71.28	2.81	Z+2	-	-	-	-	-
22.92	0.902	72.00	2.83	Z+2.5	-	-	-	-	-
23.06	0.908	72.45	2.85	Z+3	-	-	-	-	-
23.24	0.915	73.01	2.87	Z+3.5	-	-	-	-	-
23.47	0.924	73.73	2.90	Z+4	-	-	-	-	-
23.55	0.927	73.98	2.91	Z+4.5	-	-	-	-	-
23.87	0.940	74.99	2.95	Z+5	-	-	-	-	-
24.27	0.956	76.25	3.00	Z+6	-	-	-	-	-