

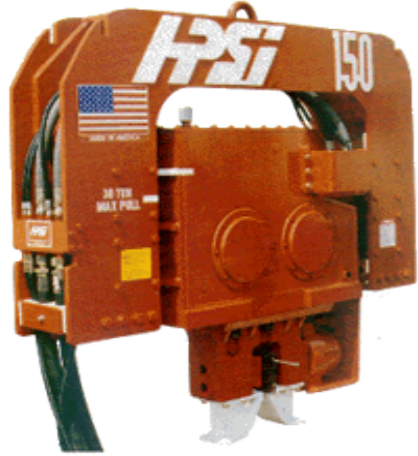


J & G SALES, INC.

PILE DRIVING EQUIPMENT

RENTALS * SALES * PARTS * SERVICE

PO Box 547, Bellville, TX 77418 * 11195 Hwy 159 East, Bellville, TX 77418
 Toll Free (800) 842-7622 * P (979) 865-4300 * F (979) 865-4303 * www.jgsalesinc.com

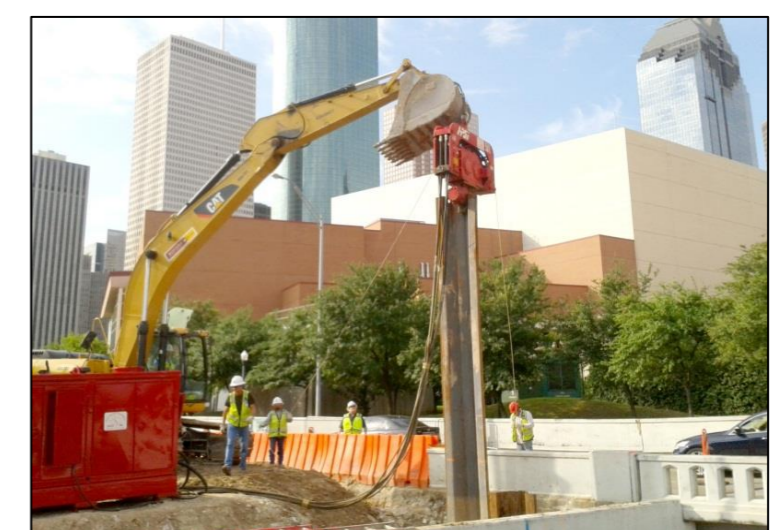


Model 150

Model 150 Exciter	Specifications	
	US	Metric
Eccentric Moment (In/Lbs, Kgm)	1500	17.3
Dynamic Force (Tons, Tonnes)	55	50
Frequency (VPM)	1600	1600
Amplitude (Inches, Mm)	0.875	22.22
Pile Clamp Force (Tons, KN)	50	445
Maximum Crane Pull (Tons, KN)	30	267
Length (Inches, Mm)	87	2210
Width @ Throat (Inches, Mm)	14	356
Height (Inches, Mm)	78	1981

Model 150 Power Unit	Specifications	
	US	Metric
Engine	C7 CAT	
Power (HP, KW)	225	157
Speed (RPM)	2400	2400
Operating Pressure (PSI, BAR)	2500	170
Flow (GPM, LPM)	120	454
Length (Inches, Mm)	108	2743
Width (Inches, Mm)	48	1219
Height (Inches, Mm)	78	1981

WEIGHTS for MODEL 150			
POWER UNIT		Shipping Weight	Suspended Weight
			7,800
EXCITER		Shipping Weight	Suspended Weight
		Sheeting Clamp	50 Ton
Caisson Beam	7 ft	15,130	14,130
	10 ft	16,750	15,750



J & G Sales, Inc. is a Distributor of
 HPSI Vibratory Hammers, Augers & Accessories