

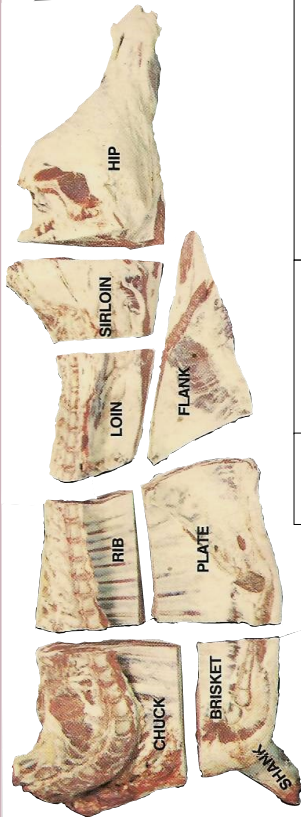
RED DEER LAKE MEAT PROCESSING LTD.

Located a short, pleasant drive south of Calgary, west of Spruce Meadows

Serving Southern Alberta since 1974

Specializing in Custom Slaughter and locally produced Beef, Lamb, & Pork

Featuring Local Alberta Beef & Lamb



WHOLE SIDE OF BEEF
 Cut From 100% Genuine Local Alberta Dry aged Beef.
 1 Hind & 1 Front (Avg. 250-300 lbs.)
 Cut, Wrapped, Frozen & Boxed **\$4.59/lb.;** Uncut **\$3.99/lb**

SPLIT SIDE OF BEEF –(Half Hind and Half Front)
 (Approx. Weight before cutting- 150 lbs.)
 Cut, Wrapped, Frozen & Boxed **\$4.69/lb**

FRONT OF BEEF
 Rib, Chuck, & Brisket
 (Avg. 130-160 lbs.)
 Cut, Wrapped, Frozen & Boxed **\$4.29/lb. Uncut \$3.89/lb**

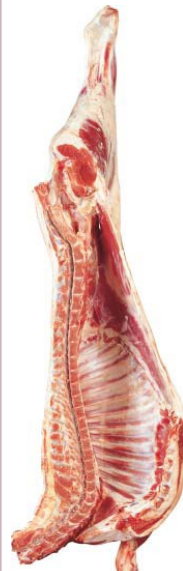
HIND OF BEEF
 Hip, Long Loin, & Flank
 (Avg. 110-140 lbs.)
 Cut, Wrapped, Frozen & Boxed **\$4.79/lb. Uncut \$4.09/lb**

Price is based on weight before cutting. Price includes cutting, Brown paper freezer wrapping, boxing, and freezing. Custom Beef slaughter also available. Call for current rates & slaughter booking. Custom Beef Slaughter is \$130.00/head; cut & wrap cost: 0.89/lb.

UNCUT BEEF PRIMALS

BEEF HIP–Bone in Whole \$4.79/lb.
Top(Inside) Round –Whole Bnls \$7.99/lb.
Bottom(Outside) Round –Whole Bnls \$7.49/lb.
Sirloin Tip –Whole Bnls \$7.99/lb.
Whole Blade (chuck)–Bone in uncut \$5.99/lb.
Cross Rib–Bone In Whole uncut \$5.99/lb.
Brisket Plate–Bone In Whole uncut \$4.39/lb.
Top Sirloin Butt –Bnls Whole Uncut \$9.99/lb.
Strip Loin –Bnls Whole Uncut \$15.49/lb.

See reverse side for more retail prices



Alberta Lamb

ALBERTA LAMB *Subject to availability
 Average Carcass Weight : 45-70 lbs;
 Cut, Wrapped, Frozen & Boxed
Carcass–\$9.99/lb. Side \$10.49/lb.

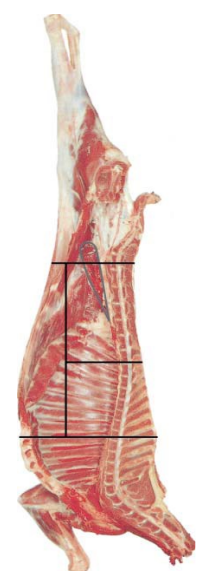
CARCASS OF LAMB
Uncut; Market Weight (45-70 lbs)
\$9.49/lb. *Subject to availability

***LAMB CUTS** *Subject to availability
 Whole Leg Bone In–\$17.69/lb. Side Ribs–\$9.99/lb.
 Loin Chops–\$28.50/lb. Whole Rack–\$25.50/lb.
 Whole Shoulder Roast–Bone In–\$14.49/lb.
 Shoulder Chops–\$14.99/lb Whole Shank–\$9.99/lb.
 Boneless Stew–\$15.99/lb Ground Lamb–\$12.99/lb.

***CARCASS OF GOAT**
 Average Weight : 25-40 lbs;
 Cut, Wrapped, Frozen & Boxed
\$14.00/lb. *Subject to availability

***SIDE OF GOAT**
 Avg. Weight : 13-20 lbs.
 Cut, Wrapped, Frozen & Boxed
\$15.49/lb. *Subject to availability

***CARCASS OF LAMB**
Uncut; Head On Spring Lamb;
Under 30 lbs
\$14.50/lb. *Subject to availability



Alberta Goat



Main Plant Address
 90093 226 Ave West
 Foothills, AB. T1S 2Z2

Ph.-403-256-4925
 Fax: 403-256-8882
 Email: info@rdlmeats.ab.ca
 Website www.rdlmeats.ab.ca



*Please Call 403-256-4925 to place an order.
 *Prices in effect until: **June 30/2023**
 Prices are subject to change. Please Call to verify.
 All our Products are from Guaranteed Natural Local
 Alberta Government Inspected Livestock