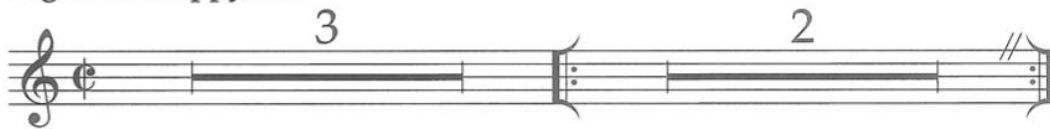


SCENE ONE

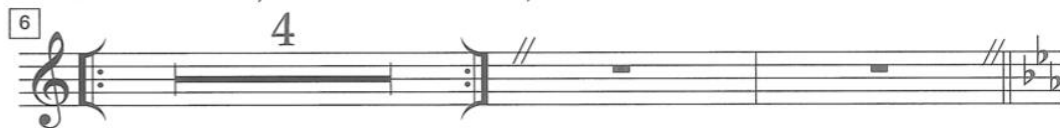
(#1 – HAPPY ALL THE TIME begins. We are in Santa's Toy Shop. On the side of the stage, SANTA CLAUS is discovered sitting in a chair holding a large book.)

HAPPY ALL THE TIME

Light and happy, in 2



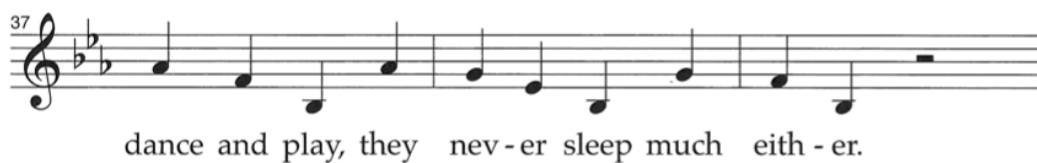
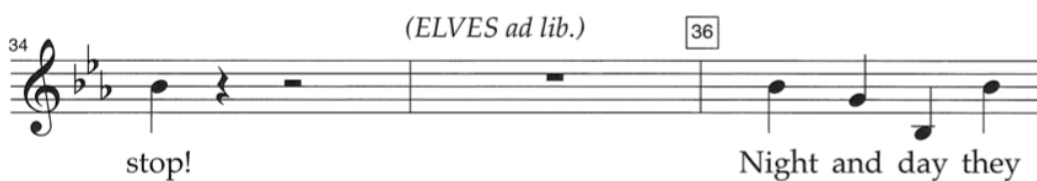
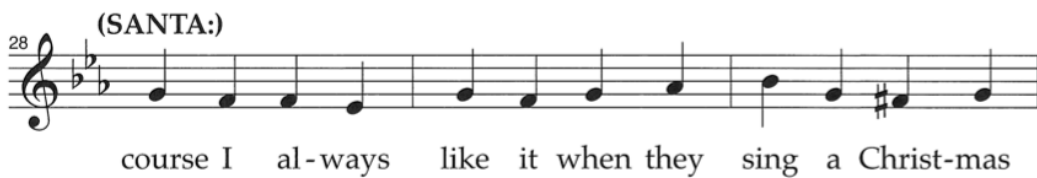
SANTA: Our story begins once upon a time, in a little village here at the North Pole called Christmas Town. Now this town is unique for two reasons: One, there's no Starbucks; and two: everyone who lives here is an elf.



(The ELVES enter and begin getting ready for their day.)



Christ-mas elves en - joy them-selves by



42 (SANTA:)

crime? _____ Of

ELVES:

Fa la la la la la la la la

44 (SANTA:)

course I love each one of them, but San - ta needs a

47

breath-er be - cause they're just so hap - py all the

50

time! They're odd - ly

52 (SANTA:)

un - god - ly

ELVES:

hap - py all the time, hap - py all the