

Project Favela

OUR MISSION



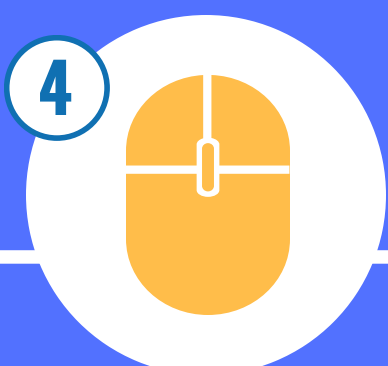
School Readiness.
Montessori program is multi-lingual, hands-on, and culturally responsive.



Literacy recovery.
Illiteracy rates are alarming. Children engage in an intensive reading intervention.



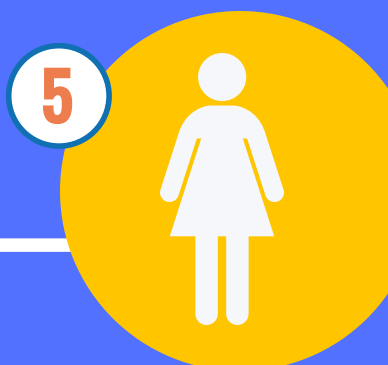
Pre-Vestibular Trajectory.
Intervention strategies aimed at getting more students college-ready.



The STEM Solution.
Innovative programming in engineering, coding, science, and math.



Global Alliances.
Partnerships with international organizations bring resources, volunteers, and change.



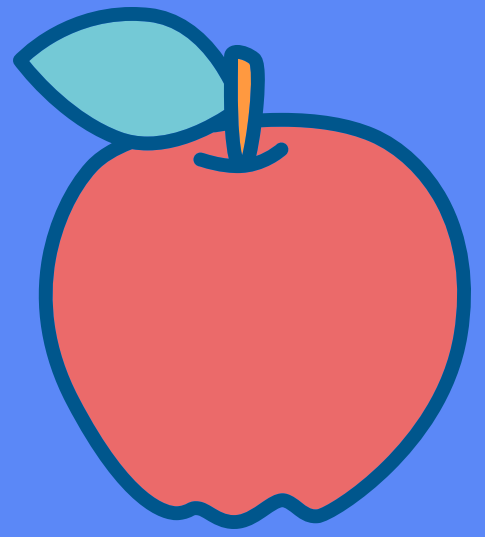
Girls Empowerment.
Helping girls be bold for change through education, opportunity and advocacy training.



Charter School in 2019
Mobilizing partners, stakeholders, and community to disrupt poverty through educational innovation.



SCHOOL READINESS at project favela



All children deserve a head start in school and a future filled with opportunities. We support the United Nations' Millennium Development Goal to achieve universal primary education worldwide.

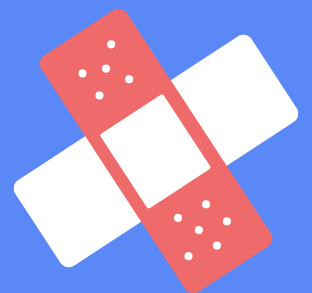
1 MONTESSORI METHODS

The Montessori method gives children ample "play" time in learning environments to maximize the organic nature of learning. Circle time activities include daily story time, songs, celebrations, and music therapy.



2 WELLNESS

Young children at Project Favela live in endemic poverty, noise, pollution, disease, and stress. We tend to children's emotional and social well being through meditation, yoga, and one-on-one support with international volunteer teachers.



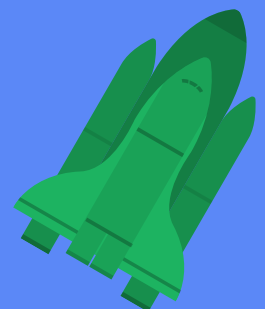
3 LITERACY RECOVERY

Literacy screening reveals most children are alarmingly behind in reading skills, and many are non-readers. Our intensive intervention program aims to get all children reading at an age appropriate level.



4 STEM CURRICULUM

Even the youngest children can get a head start on 21st century STEM skills. Our science, technology, and math program engages children in age appropriate hands-on activities so they can experience science, technology, engineering, and mathematics naturally.



5 MULTI-LINGUAL

We build each child's Portuguese language acquisition while simultaneously exposing students to oral fluency in English. Our Montessori approach encourages children to enjoy our library, build writing skills naturally, and develop a love of language and learning.



6 CULTURALLY RESPONSIVE

We draw much of our teaching approach from accepted Brazilian cultural styles. Our arts programming, in particular, is steeped in Brazilian music, art, dance, and culture.



7 MEASURING SUCCESS

We gather results quarterly using a measurement tool entitled DRDP-K: A Developmental Continuum for Kindergarten that we modified to become a performance-based exercise. Three stages of cognitive development are assessed and tracked in a one-on-one setting for literacy, science, and mathematics.



PROJECT FAVELA

Creating alternative pathways to opportunity through educational innovation

THE STEM SOLUTION

100

in 2018, the number of out-of-school children who will attend STEM programs at least part-time.

THE IMPACT



THE RATIONALE

70

the percentage of Brazilian students who are low performers in mathematics (2015 PISA results, OECD)

63

Brazil's rank in science among the 70 countries participating in the Programme for International Assessment

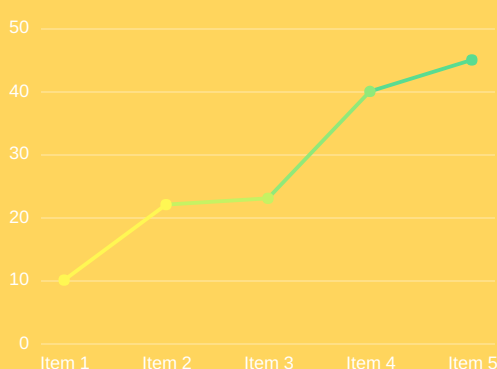
12

THE PROGRAM

hours a day we will host science, math, engineering, technology to enrolled students and the community-at-large



THE RESULTS



benchmark assessment data in core subjects, including affective measurements will be available quarterly to all stakeholders

KEY FINDINGS FOR BRAZIL (OECD)

"The widening of the achievement gap may underline the significant challenges faced by Brazil in integrating the weakest students in a fast-paced society where opportunities are increasingly shaped by knowledge, skills, and technology."