



# Gabby Gardener

Garden Club of DeLand Newsletter

Volume 24 Issue 4

[www.gardenclubofdeland.org](http://www.gardenclubofdeland.org)

Valerie Seinfeld, Editor

[www.gardenclub.org](http://www.gardenclub.org)

December 2017

[www.ffgc.org](http://www.ffgc.org)

## Upcoming Programs and Events

### 2017 - 2018

#### December 12 ..... Christmas in Hawaii 1pm

Presented by Penny Decker and the District 6 Judges Council at the New Smyrna Beach Garden Club at the New Smyrna Beach Garden Club - 2000 Turnbull Bay Rd New Smyrna Beach

#### January 17-19 ..... FFGC BOD Meeting

#### January 20 ..... Trash or Treasurer. 9am - 4pm

Register online at:

<https://ffgc.wildapricot.org/event-2675750?CalendarViewType=1&SelectedDate=1/8/2018>

#### January 24 & 25 .....62nd Annual Tropical Short Course: Tropical Waters

Mounts Botanical Garden, Clayton E. Hutcheson Center 559 North Military Trail, west Palm Beach, FL for more info visit:

<https://ffgc.wildapricot.org/event-2614526?CalendarViewType=1&SelectedDate=1/8/2018>

#### February 9-11 .....Wekiva Youth Camp Leadership Training

**Feb. 11. OPEN House 11:30 am - 1pm** Wekiwa Springs State Park, 1800 Wekiwa Circle, Apopka Guided Tours & Light Refreshments

### Announcing our Next General Meeting: All are Welcome!

January 4, 2018 6 PM

Program: Paul Garfinkle

Accessory: Wear something green from your Garden Design: Plant of the Month

Host: Greeters & Door Prizes: Firecracker Circle

### Sensory Garden Maintenance Schedule

December: Marigold

January: Magnolia

## WEKIVA YOUTH CAMP

Registration for Summer 2018 will open as the ball drops at midnight on December 31, 2017.

**Wekiva Youth Camp** is a residential nature camp for 3rd through 8th Grade youngsters sponsored by the [Florida Federation of Garden Clubs, Inc.](http://www.ffgc.org) (FFGC) for the purpose of instilling a love and respect for the *REAL* Florida in our youth through nature study, conservation and protection of our environment for the future of our state and our planet.

Wekiva Youth Camp is accredited by the [American Camp Association](http://www.aacamp.org). Wekiwa Youth Camp is comprised of six one-week sessions during June & July in [Wekiwa Springs State Park](http://www.fwparks.com), where FFGC (a *not-for-profit organization*) partners with the Florida Parks Service to improve and maintain the facilities. Wekiwa Youth Camp promises an unforgettable experience enjoying nature, crafts, and the beauty of the natural world in a magical, pristine setting. Campers should be interested in nature and like the outdoors. Florida residency is not required and campers are welcomed without regard to race, color, religion or ethnicity. Campers enjoy a unique outdoor living and learning experience, with close supervision. Our motto for our youth is "*Campers Today – Environmental Leaders Tomorrow*".

*Do you have a camper that might be interested?*



**Officers of the Garden Club of DeLand**

**2017 - 2019**

- President - Elaine Waidelich
- 1st Vice President - Barbara Willey
- 2nd Vice President - Janie Owens
- Recording Secretary - Evelyn Kelsea
- Corresponding Secretary - Suzanne Locke
- Treasurer - Shanda Hebert

**Circle Presidents**

**2017- 2019**

- Blue Sage** - Ruth Moorman
- Daisy** - Peggy Ferrera & Valerie Seinfeld
- Firecracker** - Julia Neumann and Susanna Trittschuh
- Marigold** - Betsy Dieguez & Shanda Hebert
- Magnolia** - Elaine Waidelich
- Pansy** - Joyce Fisher & Penny Smith
- Rose** - Judy Maurer
- Sparkleberry** - Eve Skolnik

**Circle Presidents:**

In January, we turn in our Circle reports to Elaine so she can pass on what we are doing to our District VI Director. These reports should include Programs and Field trips of interest.

Also in January we to turn in our donations for various programs we support. SEEK, Wekiva, Penny Pines, Natural Disasters USA Fund, Habitat for Humanity , FFGC Scholarships, You may make out one check to the Garden Club of DeLand, send a separate sheet listing which program and how much.

**Penny Pines Project:**

The Garden Club of DeLand joins with the National Garden Club and the Florida Federation of Garden Clubs by collecting money to help with the reforestation/forest education program. Just your pennies will help reforestation in Florida's most damaged National and State Forests. For just \$68, your District, Club and Circle can help to purchase and plant trees in Osceola National and John Bethea State Forest which have had over 11,000 acres destroyed by the Okefenokee fires in 2010 and 2011. The US Forest Service is trying to reforest 250 to 500 acres per year to replace trees destroyed in these

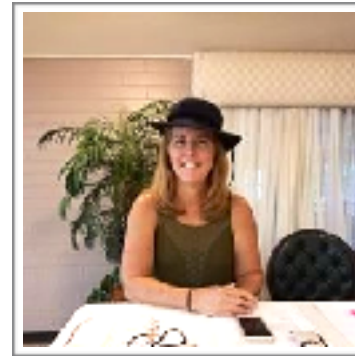


**Downtown DeLand Container Gardens  
"Downtown Planters"**

Diana Bitler, chair [fiddlehead@wildblue.net](mailto:fiddlehead@wildblue.net)  
Sharon Fiore, Rusty Gaffney Joanne Milleson, Julia Neumann, Inez Scheidt, Janet Stone, Jennifer Stone, Valerie Seinfeld, Williamae Ungaro  
Downtown Container Gardens are cared for once a month. If you are interested in joining this group contact Diana Bitler.



**FUN with Flowers**



**FUN with Flowers on February 6, 2018.**

**Deadline February 1st for the freshest Flowers.**

Sign up and bring a friend! 9am - Noon  
You must have paid pre-registration. For more information call Suzanne Locke. (386) 748-1209  
\$20. Garden Club Members, \$25. For the public  
Garden Club of DeLand - 865 S. Alabama Avenue

**With the Holidays just around the corner:  
Please let our sponsors know you appreciate  
their donations!**

**Patronize their businesses.**



**Select Growers**

- Beauty Mark
- Brickhouse Grill
- Buttercup Bakery
- Countryside Animal Clinic
- DeBary Nursery
- Dr. Rusty Gaffney
- DeLand Fish House
- DeLand RV & Boat Storage
- Dyno Tune
- LA Johnson, St. John Club Hair Salon
- Missy Thompson for the Discovery Beach Resort, Cocoa Beach,
- Green Links Golf Villas, Lely Resort, Naples, and tickets to the Holy Land Experience
- Opera Orlando, Peggy Banks, local fine artist,
- Santorini Restaurant
- Sepulveda Hair Salon
- Sharon Kurth, St. John Club Hair Salon
- Speak EZ Barber Shop, St. John Club Day Spa
- Sunny's Wine & Liquor
- The DeLand Stockyard
- Victoria Hills Golf

**Ways and Means**

**Lisa Schnetzer, Chair  
Happy Holidays!**

You can also donate at any time. Just bring it to a meeting or give Lisa a call 386 774-5058  
With the funds we make, some great improvements will be made to help keep our Clubhouse looking great.  
As always, Ways and Means appreciate what great shoppers we have and our generous donors that keep us growing.



**Garden of the Month  
Jennifer Stone, Chair**

**National Garden Club, Inc.  
Mission Statement**

“National Garden Clubs, Inc. provides education, resources, and national networking opportunities for its members to promote the love of gardening, floral design, and civic and environmental responsibility.”

The Garden Club of DeLand supports the above mission by bringing to the forefront outstanding gardens in DeLand, FL. area and awarding the “Garden of the Month” to deserving homeowners. Educating our members on the month-to-month care of their own gardens.

The native plant landscaped and designated “Florida-Friendly Yard” of Roger and Genna Wangness at 341 W. Wisconsin Ave. is the Garden Club of DeLand’s December Garden of the Month. Blooming pink wispy muhly grass and beauty berry plants with their deep purple berries are under planted with dune sunflowers and pink flowering sunshine mimosa. Fire bushes flanking the sides of the paved entry give stability and visual balance leading to the house and curved reclaimed concrete paths lead through the casual garden. Two older camellias full of buds help give a grounded feel. Coonties along the paths give continuity and structure and low growing purple wandering jew lend pops of color. Tall shell gingers, peacock gingers and two types of mondo grass flank the sides of the house. A wooden deck gives a shaded relaxing spot in which to view the Zen style back yard. A light bedecked pergola, koi ponds and pea gravel walkways enhance the calm feel. A knot style garden for herbs and vegetables in the sun allows ample planting area. Large bamboo stands and tall porter weed plants give height and a strong, warm sense of enclosure. Built in 1921 with materials and plans from the Sears Catalog, the Wangness home continues its honest, down to earth roots with a colorful and easy to care for landscaping. 97% of the plants are Florida natives which require less water, fertilizer and maintenance. In 2008, the garden became certified as a “Wildlife Habitat” by the National Wildlife Federation and as a “Florida-Friendly Yard” by the University of Florida and Volusia County extension center.



The Wangness’ have proven that environmentally sensitive native planted gardens can have strong curb appeal all year round as well as provide a home and food for our native creatures. Even mere blocks from the heart of DeLand.

Become a Florida-Friendly Yard/National Wildlife Habitat

- Florida Native Yards



- fyn@ifas.ufl.edu
- Floridayards.org
- National wildlife habitats [nwf.org](http://nwf.org)

### Spicy-Sweet Pecans

#### Ingredients:

- 3/4 cup granulated sugar
- 1 tablespoon light brown sugar
- 2 teaspoons chopped fresh rosemary
- 1 teaspoon kosher salt
- 1 teaspoon ground cinnamon
- 1/2 teaspoon ground ginger
- 1/4 teaspoon ground nutmeg
- 1/4 teaspoon ground red pepper
- 1 large egg white
- 4 cups pecan halves
- Vegetable cooking spray
- Wax paper



#### How to Make It

The egg white helps the spice mixture adhere evenly and gives the pecans a crisp, glossy coating.

##### Step 1

Preheat oven to 275°. Stir together first 8 ingredients in a medium bowl.

##### Step 2

Whisk together egg white and 1 Tbsp. water in a separate medium bowl until foamy. (No liquid should remain.) Add pecans, stirring to coat.

##### Step 3

Add pecan mixture to sugar mixture, stirring until evenly coated. Spread pecans in a single layer on a lightly greased (with cooking spray) aluminum foil-lined half-sheet pan (about 17 x 12 inches).

##### Step 4

Bake at 275° for 50 to 55 minutes or until sugar mixture hardens and nuts are toasted, stirring every 15 minutes. Spread immediately in a single layer on wax paper; cool completely (about 30 minutes). Store in an airtight container up to 7 days.

Recipe by Southern Living

Yields 4 cups

### S.E.E.K. SAVE THE EARTH'S ENVIRONMENT THROUGH KNOWLEDGE

S.E.E.K. is FFGC's annual environmental conference for students entering grades 10 - 12

Kayak Silver River - Interpretive Tour, Hiking & Tram Tours, Focus on Wildlife and Silver River Natural History Museum, Garden Tours, Brainstorming Ideas, Networking Night, and more.

The Garden Club of DeLand has sponsor many student's to attend S.E.E.K. **Barbara Fiano (Sparkleberry)** is the chair and can answer all your questions and guide you through the registration process.

The applicant must be enrolled in a Florida high school, entering grades listed above with minimum of "C" average. Student must be sponsored by a garden club or circle. Completed application must be received between January 1 and March 1. S.E.E.K. has reached it's capacity early each year, so register early.

### Natural Disaster Fund

The Natural Disaster USA Fund was established by NGC in 1997 to receive monetary contributions from states, clubs and individuals for the purpose of assisting local and state clubs with their garden-related restoration efforts. This fund has helped to replant parks, municipal gardens and other garden related sites due to natural disasters caused by floods, hurricanes, earthquakes, tornadoes, ice storms and wildfires.

### Habitat for Humanity

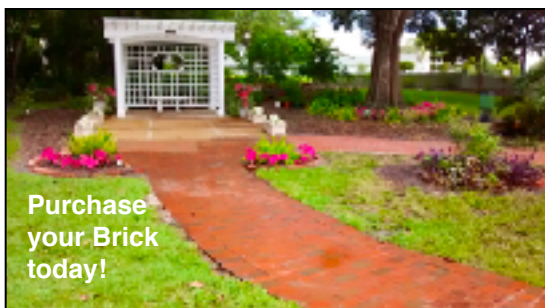
Habitat for Humanity Garden's philosophy is that no commitment, physical or monetary, is too small. All endeavors and contributions will be gratefully acknowledged. State chairmen, please contact the Habitat for Humanity Chairman and share fun facts and stories. We hope to build a nationwide community through social media with this project.

The program's emphasis is on enhancing the environment by landscaping HFH homes with hearty native trees, shrubs, plants, and flowers that also attract butterflies. It is the hope of NGC to have the community, both adult and young gardeners, involved in this very worthy project. NGC's goal is 100% state participation, in some manner, across the nation. Habitat for Humanity Garden's philosophy is that no commitment, physical or monetary, is too small. All endeavors and contributions will be gratefully acknowledged. State chairmen, please [contact the Habitat for Humanity Chairman](#) and share fun facts and stories. We hope to build a nationwide community through social media with this project.

For more information: Nancy Salem, chair (Rose)

### Brick Pathway

Please send the information wanted – 14 characters per line – 2 lines. Name of your Circle, your name, phone number and \$40.00 Please make the check to Garden Club of DeLand and mail to: Rusty Gaffney, 339 E New York Ave DeLand. FL 32724



## Garden Club of DeLand “The Dirt”

Norma Thomas, Grounds Chair



Over the past several weeks the Weedettes were getting back into the maintenance routine at the Club. We gained a new member in our Monday morning group, Shanda Hebert, our new Treasurer! Shanda is a very knowledgeable lady with a great sense of humor, a can-do attitude and willing to get dirty with rest of us. (For those of you who don't know how to say her name, it sounds like chandelier.) Welcome Shanda!

Last month brought us shorter days and cooler nights which signaled our beautiful caladiums into their decline. We sadly watched them die back naturally and trimmed away what remained as the winter annual crop was planted at the end of November. It wasn't fun watching the caladiums lay their fading leaves onto the ground. They were such a wonderful display during the summer months and for the September and October events. But they will be back next August.

As we laid a yard of mulch each week, we discussed what winter annuals to plant this season. Last year we planted 150 four-inch pots of annuals. This year, we are looking at 200 pots. What's different on the grounds this year is that we successfully added a variety of multi colored foundation plantings to the green landscape. Now, how do we tie it all together? How do we get you to say wow, when you walk onto the grounds? These are all considerations we pondered during the month of November. We hope you like our selection this year. It had to be monochromatic. One simple color of different varieties tying one garden bed into the next. And the white flower does it the best.

Each year we try to top what we did the previous year and we think we did. We truly hope you like it. Happy Gardening my Friends!

Norma is pictured at the home of Margaret Lee. The Daisy Circle had the privilege of having Norma present a program on the *12 Principles of Garden Design*.

**Enclosure** – A garden room is defined by borders of various materials.

**Shape and Form** – Consider the contour and three-dimensional qualities of individual plants or groups of plants in the garden, as well as the outline of a garden room itself.

**Framing the View** – Directing attention to an object or view by screening out surrounding distractions while creating a visually balanced and organized composition.

**Entry** – Have a defined point of entrance into a garden enclosure.

**Focal Point** – Positioning an object to draw the eye and to create a feature of attention.

**Structures** – Utilize a variety of constructed features within the garden. These next six principles add decorative or finishing touches to your garden as well as personality, charm and – last but not least – fun.

**Color** – Orchestrating the color palette in the garden through the selection and arrangement of plants and objects.

**Texture, Pattern and Rhythm** – Using surface characteristics, recognizable motifs, and the cadence created by the spacing of objects as elements of design. Abundance – Use an ample to overflowing quality created by the generous use of plants and materials.

**Whimsy** – Elements of lighthearted fancy.

**Mystery** – Piquing a sense of curiosity, excitement and occasionally apprehension through the garden's design.

**Time** – Various garden styles representing certain ages of design.

Norma used P. Allen Smith as a reference for her program.