

# CONTROL SYSTEMS

**Automated Ingredient Systems** Electrical engineering department utilizes the most advanced PLC's, computerization, and industrial software programs. Our controls systems offer a wide range of options including inventory management, production scheduling, historical trending analysis, and energy consumption management.

Constant interaction between AIS and your company throughout the engineering phase of the project assures attention to detail and quality of design that translates into efficient system operation on your plant floor.

Our electrical engineering department is also experienced in providing controls systems upgrades for existing systems with antiquated, or out of date controls. New controls systems are designed to incorporate all of the functionality of the original system while adding the increased features available with today's technology. All systems are designed to allow for future upgrades, as technology advances, or customers needs increase.

## ENGINEERING CAPABILITIES

- Every Major PLC Manufacturer, we will use YOUR PLANT STANDARD.
- OI's, MMI's, HMI's, SCADA
- MS SQL Server & Oracle Database Design & Integration
- MS Visual Basic & HTML
- Barcode & Labeling
- Intranet Data Display
- Data Recording & Reporting

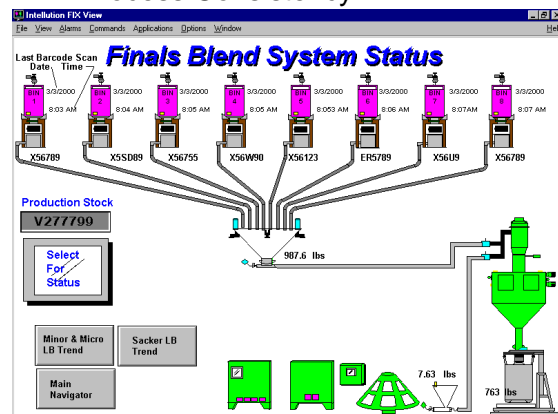
## PROGRAMABLE LOGIC CONTROLLER

**Allen-Bradley**  
Micrologix  
1000, 1200 and  
1500  
SLC 500 Series  
PLC-5 Series  
**General Electric**  
Fanuc  
90-30 Series  
**Honeywell**  
620 Series

**Idec**  
Micro1 and Micro<sup>3</sup>  
FA2J Series  
**Modicon**  
984 Series  
**Siemens**  
Simatic 505 (TI)  
S5 Series

## DESIGN APPROACH

- Safety
- 24 Hour Production
- Custom Design based on YOUR Supervisory, Maintenance & Operator Personnel Input.
- Design with your Process Nomenclature
- Document & Submit All work for Review
- Startup Plan
- Complete Operations Simulation at Our Factory
- Schedule Review with Plant Personnel
- Backup Plan
- Informative Alarming for Troubleshooting
- Always Review the Latest Technology before picking Hardware-Software Solutions.
- Process Consistency



## PANEL FABRICATION CAPABILITIES

- In House Factory Shop
- NEC
- UL Label Offering
- Motor Starter / PLC / PC Enclosures
- Hazardous Environment Experience
- Complete Power UP & Simulation Test of all Control Panels before Shipment.

## PANEL FABRICATION CAPABILITIES

- Air-conditioned Cabinet
- Voltage Regulation
- Clean Power Filters
- Finger Space
- 25% Spare Space
- Pre-wired, Numbered & Labeled Wiring



## OPERATOR INTERFACE

**Allen-Bradley**  
PanelView  
**CTC**

Access4000  
**NIS**

LCD Display with Touch Screen  
**OI Direct**  
OI Panel

**Total Control Products**  
QuickPanel and QuickPanel Jr.  
LCD Display with Touch Screen

## COMMUNICATION PROTOCOLS

**Allen-Bradley**  
Remote I/O  
Data Highway  
DeviceNet  
**Ethernet**

**General Electric**  
Genius Bus  
**Honeywell**  
DMCS

**Modicon**  
Modbus/Modbus+

## APPLICATION SOFTWARE

**Allen-Bradley**  
RSView  
RSLinx

**Intellution**  
Fix  
iFix (Dynamics)

**Microsoft**  
SQL Server  
Visual Basic  
**Wonderware**  
In Touch