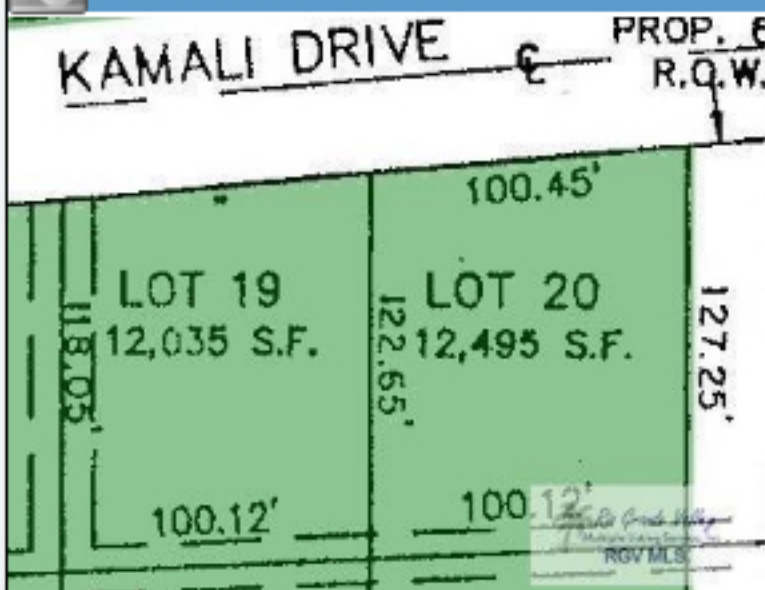


## Additional Photos



Unit/Suite/Lot #: 19 & 20  
 Type: Commercial, Improved  
 Suitable Use: Commercial  
 Topography: Level  
 Crops: None  
 Access: City Street  
 Ag Value:

Area: Harlingen  
 County: CAMERON  
 Subdivision: HARLINGEN  
 COMMERCIAL PLAZA  
 School District: HARLINGEN  
 C.I.S.D.  
 Elementary School: TREASURE  
 HILLS  
 Middle School: COAKLEY  
 High School: HARLINGEN SOUTH  
 Lot Dimensions: 200.9X 118.05 X  
 200.24X 127.25  
 Lot SqFt: 24530  
 Acreage: 0.56

Grid:	Tax ID Number: See Remarks	Base Taxes: 3392.00	Tax Year: 2017
Legal Description: HARLINGEN COMMERCIAL PLAZA BLK 1 LOTS 19 & 20			
HOA Fees: 0.00	HOA Fequency:	Community Amenities: Curb & Gutter, Street Lights	
Location Features: None			
Improvements: None			
Fence Type: None		Street Type: Paved	
Irrig/Wtr Right:		Water Comments:	
Water Supplier:		Irrigation District:	
Leased (Rent/Share):		Lease Expire Date:	
Utilities: City Garbage, Electricity Available, Water Available, Sewer Available, Phone Available			Water: Public
Documents on File: Legal Description, Survey/Plat		Showing Instructions: Vacant	
Proposed Financing: Cash, Conventional		Possession: See Remarks	
Remarks: Prime Commercial Lots in Medical area surrounded by Hospitals, Hotels, Restaurants & Growing Retail Market. Price reduction from \$134,915 to \$110,385.			
Advertisement Feed: Prime Commercial Lots in Medical area surrounded by Hospitals, Hotels, Restaurants & Growing Retail Market. Price reduction from \$134,915 to \$110,385.			
Directions: From Expressway 77, Exit North onto Ed Carey Drive. Turn Right on Hale Drive at Buck Ashcraft Funeral Home. Turn Right onto Kamali Drive. Properties will be on your Left.			

Information Herein Deemed Reliable but Not Guaranteed