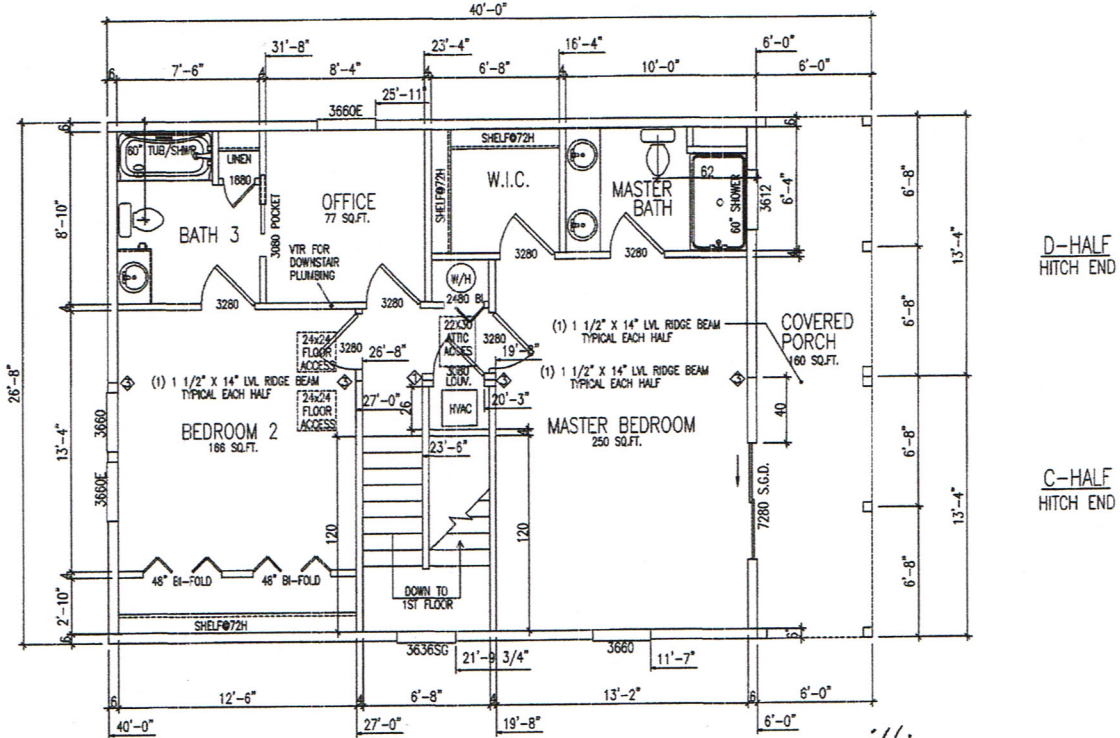


These prints comply with the Florida Manufacture Building Act and adopted Codes and adhere to the following criteria:



Contract Title: 13 - Unimproved
 Occupancy: Res.
 Allowable No. of Floors: 2
 Wind Velocity: 180 mph (150 mph Exp. 2)
 Fire Rating of Ext. Walls: 0
 Plan No.: MT2437-MD404-612
 Allow. Floor Load: 40 P.S.F.
 Approval Date: 2/14/2016
 Manufacturer: Chapman Construction, LLC



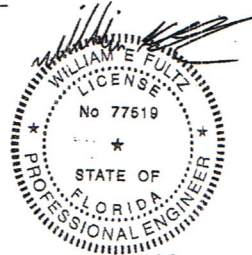
D-HALF
HITCH END

C-HALF
HITCH END

*ART. LIGHT AND VENT PROVIDED

LIGHT/VENT CHART	FLOOR AREA SQ. FT.	LIGHT		VENT	
		REQUIRED	PROVIDED	REQUIRED	PROVIDED
MASTER BEDROOM	250	20.00	23.71	10.00	10.00
BEDROOM 2	168	13.28	26.40	6.54	12.92
BEDROOM 3	138	13.20	11.04	6.46	6.52
BEDROOM 4	114	9.12	13.20	4.58	6.46
KITCHEN/DR	132	10.56	42.01	5.28	20.81
LIVING ROOM	217	17.36	47.70	6.68	23.71
OFFICE	77	6.16	13.20	3.08	6.46
-	-	-	-	-	-

WINDOW SCHEDULE					
WIDTH	HEIGHT	TYPE	LIGHT SQ. FT.	VENT SQ. FT.	
30"	36"	SINGLE HUNG	6.19	2.05	
30"	60"	SINGLE HUNG	10.88	5.35	
36"	36"	SINGLE HUNG	7.51	3.56	
36"	40"	SINGLE HUNG	8.48	4.05	
36"	60"	SINGLE HUNG	13.20	6.46	
66"	32"	SINGLE HUNG	9.07	1.72	
71"	81"	SINGLE HUNG	34.50	17.25	



03/14/16
 Building System Engineering, PLLC
 149 Harbour Watch Blvd.
 Leesville, SC 29070
 Ph: (803) 808-3491

FINER LINES

DESIGN & CONSTRUCTION, INC

DATE: 2/13/2016	3RD PARTY INSPECTION AGENCY
CODES: 2014 FBC	NTA INC
LABELS: FLORIDA	305 NORTH OAKLAND AVE
SCALE: NTS	NAPANEE, IN 46550
	Contact: Dave Borts (574-773-2732)

MODEL: MFT2437-MD404-612-108	DRAWN BY: Jerry Benton
DRAWING: 2ND FLOOR MASTER PLAN	SHEET 5

ENGINEERING & PLAN DEVELOPMENT BUILDING SYSTEM ENGINEERING
 149 HARBOUR WATCH BLVD.
 LEESVILLE, SC 29070