

Simon

CBK Needlepoint Collection

Stitch Guide

Shar Beaubien • “Simon” • SB-PL 02



Stitch Guide by SuZy Murphy

SIMON

SUPPLY LIST

CARON COLLECTION

Watercolours

Saffron - Yellows

Spice - Browns

Impressions

1043 - Dark Gray

1045 - Medium Gray

1047 - Light Gray

0020 - Black

RAINBOW GALLERY

Panache

PN02 - White

PN03 - Silver

Silk Lame' Braid for 18 Count

SL24 - Baby Pink

SL26 - Raspberry - 2 cards

SL 91 -Dark Raspberry - 2 cards

SL96 - Garnet

RIVER SILKS

7MM

66 - Green

97 - Yellow

34 - Royal Blue

4MM

185 - White

SIMON

BACKGROUND

Silk Lame' Braid for 18 Count

SL24 - Baby Pink

SL26 - Raspberry - 2 cards

SL 91 -Dark Raspberry - 2 cards

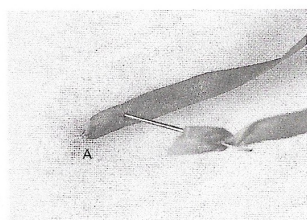
SL96 - Garnet

Stitch the background with 1 strand of the Silk Lame', with 4X4 Brick Stitch. I started at the top of the canvas and worked my way down, changing colors as the paint changes.

JAPANESE RIBBON STITCH

The Japanese ribbon stitch is extremely versatile. Not only is it possible to vary the lengths of the stitches and the degree of tension used, but stitches can also be layered using two widths of ribbon.

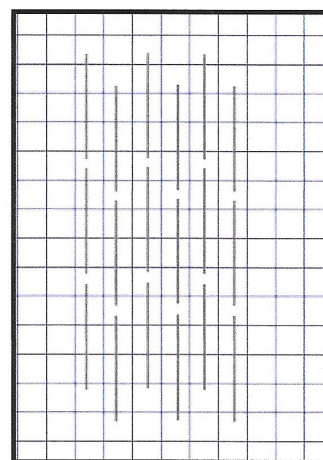
If all your attempts at Japanese ribbon stitches somehow turn into straight stitches, slow down! You're probably pulling the ribbon through the fabric too quickly, thus preventing the small curl at the end of the stitch from forming.



1



2



4 X 4 BRICK

BOUQUET

River Silks

7MM

66 - Green

97 - Yellow

34 - Royal Blue

4MM

185 - White

Work Satin Stitches for the leaves.

The petals of the flower are worked with Ribbon Stitch.

The centers are French Knots.

© By SuZy Murphy and Shari Beaubien

Simon

SIMON

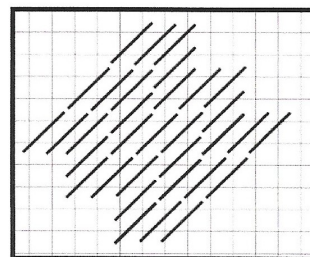
STRAW

Watercolours -

Saffron - Yellows

Spice - Browns

Using 1 strand, do Byzantine Stitch. I started in the lower right hand corner. The Spice is for the area under the elephant - the shadow.



BYZANTINE

ELEPHANT

Impressions

1043 - Dark Gray

1045 - Medium Gray

1047 - Light Gray

0020 - Black

Panache - PN02

Using 3 strands of the Impressions, work Random Long and Short Stitches, imitating the way his hair' grows.

With 3 strands of the black, work his tail in long stitches and around his eye with Tent Stitches.

His hoof is done with the Panache in a Tent Stitch.

BIRD

Panache

PN02 - White

PN03 - Silver

Tent Stitch with the Panache as it comes off the card..

(See Bouquet for stitching of the flower and ribbon.)

© By SuZy Murphy and Shari Beaubien

SIMON

Stitches and Threads chosen by SuZy Murphy

A few thoughts and suggestions before you begin.

The strands should all be separated and put back together for a smoother look and better coverage.

The strands recommended are the ones I used, so you may need to adjust them for the way you stitch.

In most cases the graphs are not counted from the canvas, so the actual counts you use may be different.

All of the supplies were available when I stitched this piece. However, I cannot guarantee they will be at the time you purchase the canvas. If a thread or color is no longer available, you will need to find the closest substitute.

No part of this Stitch Guide may be reprinted or reproduced without permission from Shari Beaubien or SuZy Murphy.

Have fun and Happy Stitching.

Suzy Murphy

