



Lighthouse Quilters Guild

Sew on and Sew Forth



As I compose this letter, I realize that it may be the middle of the month when you read it. By then we will have enjoyed some later sun sets, warmer temps and the beginning of spring. With that I am reminded of all I was going to do this winter and what I didn't get accomplished.

It was a real pleasure to see so many of you at our February meeting. Our next two meetings also will be Zoom meetings as Kirsten had scheduled our speakers with that in mind. Hoping to be in Fellowship Hall in May. The board is working on a way to simultaneously have an in-person and Zoom meeting. We have several new members who are not local and we want to make sure they can access our workshops and meetings.

Until next month... Butterflies are like women – we may look pretty and delicate, but baby, we can fly through a hurricane. Betty White

Pat Henningfeld



March and April Birthdays

Yvonne Parks Mar 2
Patti Dunn Mar 19
Autumn Latimore Mar 19
Dianna Zimmerman Mar 19

Marylou Wendzinski Apr 4
Sandra Kruppstadt Apr 13
Charity Pedersen Apr 19
Shirley Gronholm Apr 23



March 2022 Inside This Issue

Board Members 2022 Programs Zoom Link for Meeting	2
March Program Notes 2022 Workshops	3
Charity Quilts Project Quilt Camp Strip Day for Charity	4
February Meeting Minutes In Case You Missed It Quilting Events	5
Editors' Note Sew 'n Save of Racine	6
LHQ Marketplace	7

Next Meeting

March 28 at 7:00 pm by Zoom

Things to Bring:

- Welcoming Smile
- Name tag
- Show and tell

Articles for Newsletter

The deadline for submitting articles is
on or before the 8th of each month.

Submit your articles to:

Sharon Matusevicius at

matusevicius.1@att.net

Sue Causey at

lhqsuecausey@hotmail.com

2022 LHQ Board Members

President

Pat Henningfeld

Vice President of Programs

Vice President of Planning

Kirsten Weiss

Vice President of Membership

Laura Sanders

Secretary

Judy Martin

Treasurer

Ginger Wanserski

Hospitality

Nancy Fenske

Librarian

Cathy Rolfson

Historian

Colleen Schneider

Publicity

Pat Henningfeld

Social Media

Sharon Matusевичius

Sue Causey

Newsletter/Website Coordinators

Sharon Matusевичius

matusевичius.1@att.net

Sue Causey

lhqsuecausey@hotmail.com

Check out Facebook!

Post your quilts on Facebook! Don't forget to **like** our page and **share** it with your friends. Updates to meetings and workshops will be posted



2022 Programs

Mar.28	Susan Brubaker Knapp: Thread Painting
Apr. 25	Heather Kojan: Design Remix: UFO's, orphan blocks, what was I thinking?, purchases, fresh ideas for stale projects
May 23	Rebecca Lidstrom: The Magic of Secondary Design: Two block Combos to Create Secondary Design www.studiorquilts.com
May 23	Workshop: Dynamic Duo: Talavera Combine two quilt blocks to create a look reminiscent of classic pottery tile
June27	Schoolhouse Workshops
July 25	Picnic and Rummage Sale
Aug. 29	Christopher Weinhold Trunk Show Retrospective on his journey as a quilter
Aug. 29	Workshop: Escher – Kaffe Bright colors and a play of lights and darks give this quilt the depth and illusion of an Escher print
Sept. 26	Linda Halpin: Borders on Parade
Sept. 27	Linda Halpin Workshop: Homestead Star (9-4)
Oct. 31	Judy Anich: Retrospective Trunk Show of her Quilt Journey
Nov. 28	Holiday Party

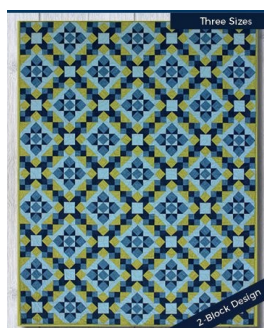
If you wish to join the Zoom meeting, please contact Laura Sanders or the Newsletter Team for instructions



Program Notes for March 28: Susan Brubacher Knapp Thread Sketch It !

This will be a one-hour digital slide show and trunk show. Susan will cover what thread sketching is (and isn't), preparing your piece for thread sketching, types of threads and thread weights, sewing machine considerations, great tools, and how to add wonderful detail to your piece with thread, including color line, pattern, texture, dimension and movement. She will also address getting over the fear of trying free-motion stitching.

2022 Workshops



Talavera May 23

Combine two quilt blocks to create a look reminiscent of classic pottery tile. Talavera is an eye-catching quilt that you will enjoy making. Only 4 fabrics are needed for the quilt top.

Lutheran Church of the Resurrection from 9-4

Members: \$45/Nonmembers: \$50

www.studiorquilt.com



Escher – Kaffe August 29

This pattern is the third in a series of MC Escher inspired quilts. Bold prints work well in the construction of this quilt. The cubes along with the original Escher Y's make for a fabulously dimensional quilt. No Y seams used in construction makes this project simpler than the complex design appears. The pattern will be included in the price of this workshop.

Lutheran Church of the Resurrection from 9-4

Members: \$45/Nonmembers \$50

www.quilt-agious.com



Homestead Star September 26

This class starts with the how-to of Fabric Selection, continuing on with precision machine piecing techniques that result in cutaways that can cleverly be used to make a second quilt out of the leftovers. The class continues with information on how to decide what quilting pattern goes where, as well as how to accomplish those quilting techniques with your home sewing machine.

Lutheran Church of the Resurrection from 9-4

Members: \$40/Nonmembers \$45

www.lindahalpin.com

LIGHTHOUSE CHARITY QUILT PROJECTS FOR 2022

When we come back together, we will need quilts for all the places below.

Stay well, stay safe, stay quilting!

Four members will distribute quilts this year:

Nancy Larsen for Women's Resource Center

Baby to Lap size--36x36 to 55x70, pieced, cheaters, fleece, crocheted and knitted items.

Regina Scott Brooks for Quilts for VA Home in Union Grove

Twin size or a little larger but not much larger, fabrics can be either for men or women

Barbara Vallone for Quilts for the Community which includes:

All Saints NICU, Racine, and Children's Hospital, Milwaukee

Baby to Lap size--36x36 to 55x70

St. Monica's Home plus Habitat for Humanity and other local needs

Small Lap--45x50 to Nap Lap--55x70

Operation Snuggles – quilts for soldiers' children, Camp Serenity, and Wounded Warriors

Baby to twin bed--36x36 to 60x75

TC Wiley for Foster Children's Project

Baby to Large Lap--40x40 to 55x70

Quilt size can range from 36 x36 to 60 x 75—see sizes above. **Please keep your biggest quilt to twin bed size.**

Thank you for making this project a success. Nancy Larsen, Regina Scott Brooks, Barbara Vallone, and TC Wiley



QUILT CAMP FOR SPRING 2022

THE DEKOVEN CENTER, Racine, WI DAY QUILT CAMP Tue, Wed, Thu April 12, 13, 14 \$30 per day
DAY QUILT CAMP is each day from 9 am~6 pm with lunch in historic 1850s Assembly Hall. **Max 16 per day**

CAMP ZION: Door County, WI May 11, 12, 13, 14, 2022~ **afternoon Wed to 11 am Sun - 4 nites/8 meals \$310**

Early Start: Mon, Tue, May 9-10, after 3 pm/NO meals until WED SUPPER! **\$30 per night**

Camp Zion is at the tip of Door County on the Bay side just north of Ellison Bay. Sleeping is dormitory style with bunk beds and shared baths. There are steep hills in camp. Parking is limited so car-pooling is appreciated! **Max 30**

If YOU are interested in seeing ALL the camps, I have scheduled in 2022, please contact me for a two-page copy of my Quilt Camp Flier and I will send it to you by e-mail. Thanks!! Barbara Vallone.

Call 262-639-8185 or qltingb@gmail.com



STRIP DAY FOR CHARITY!!

YES! This popular FREE-ish STRIP DAY will happen at The DeKoven Center in The Assembly Hall on Saturday, March 26 from 9 am to 5 pm! Come make foundation-pieced strip blocks and help use UP two BIG tubs of strips!

PROVIDED: 9-inch foundation squares, LOTS of strips, irons and ironing mats, tables and chairs

BRING: sewing machine and sewing supplies, your favorite beverage and lunch plus a \$10 donation

DeKoven provides this space for us and asks for a donation. They do this for all the charity groups that have been there. Also, you only need to SEW the strips to the foundation ~ they will be squared up by the Quilting ELVES!! I still have a few openings! To sign up NOW, please contact Barbara Vallone at 262-639-8185, qltingb@gmail.com

Lighthouse Quilters Guild
Guild Meeting
February 28, 2022
Zoom Virtual Meeting

Forty-seven Guild members enjoyed a presentation by Raymond Steeves from Phoenix, Arizona (3dudesquiltingdesigns.com). He presented 50 quilts he had designed, primarily using strip piecing methods. Patterns for these unique and varied designs can be purchased on his website.

After the presentation, a brief Guild meeting was held. Mary Wolter reported that the date for the Guild's next quilt show had been changed to October 7-8, 2023 in the same location. Laura Sanders reported that the Guild membership now stands at 78 members.

In Case You Missed It

Patricia Belyea was our guest lecturer at our June 28 meeting. If you're interested in seeing her again, she will present a virtual talk at the Wisconsin Museum of Quilts and Fiber Arts. See What's Going On for more information.

The Racine Art Museum is hosting the 13th Annual PEEPs Art Exhibition April 7-23. Quilters are encouraged to submit a 12x12 inch Peep themed quilt block. Deliver to Sew n Save or the museum between Mar. 16-23 along with entry form. Forms can be downloaded at ramart.org/artist-resources/call-for-artists/peeps.

Updated membership directories will be sent to you via e-mail in the near future. Check your information for any changes you may need to make and inform Laura Sanders of same.

March 19 is Worldwide Quilting Day, a day created to connect quilters and the shops that support them. Contact area quilt shops to find out if they have any special plans for this event.

Keep informed by reading your newsletter. If you have any questions or concerns, call me.

Pat Henningfeld

Quilting Events (Some Virtual)

Feb. 4-May 1. Quilt Japan: The 15th Quilt Nihon Exhibit. Wisconsin Museum of Quilts & Fiber Arts. For more information, wiquiltmuseum.com.

Mar. 26-27. 33rd Annual Crazy Quilters Guild Show. Parkview Middle School, 930 N. Rochester St., Mukwonago. Sat., 9 a.m.-5 p.m.; Sun., 10 a.m.-4 p.m. \$7 (2-day/\$10). mukwonagocrazyquilters.com.

Apr. 1-2. Spring into Quilting. Evergreen Quilt Guild. Green Bay Community Church, 500 Cardinal Lane, Green Bay. Fri., 10 a.m.-6 p.m.; Sat., 9 a.m.-3 p.m. Admission \$6.

Apr. 7-23. 13th Annual PEEPs Art Exhibition. Racine Art Museum, 441 Main St.

Apr. 23-24. Medford Quilt Show. Simek Center, 1037 W. Broadway Ave., Medford. Sat., 10 a.m.-4 p.m.; Sun., 10 a.m.-3 p.m.

Apr. 27-30. Paducah Quilt Show. For more information, quiltingpathways.com.

Apr. 9. Tokyo Quilt Festival & Spirited Textile Tour of Japan: Virtual Talk with Patricia Belyea. Wisconsin Museum of Quilt & Fiber Arts. 9:30-11 a.m. \$25 non-member, \$20 member. For more information, wiquiltmuseum.com.

Apr. 9. Intimate Virtual Members-Only Chat with Patricia Belyea. Wisconsin Museum of Quilts & Fiber Arts. 11 a.m.-12 p.m. \$100. For more information, wiquiltmuseum.com.

(Please check web sites before planning trip for latest COVID restrictions)

Editors' Note

Please accept our apologies for the newsletter distribution being a bit later than expected. Extra time was needed to finalize some programs and workshops. The good news is we have a full calendar with some interesting programs and workshops this year. The best news is that we will likely be meeting in person after the April meeting! There will be a few restrictions to begin, and plans are made to continue hybrid (Zoom) connection for our members and guests who may not feel comfortable with sitting close to your friends or attending from a distance.

A special thank you is given to Kirsten Weiss for taking on the challenge of filling this year's calendar. She is willing to assist a volunteer to begin work on the 2023 Calendar. She has a few contacts available and will shadow anyone who volunteers to do this task.

The newsletter is distributed to members who are current with their dues. We welcome back anyone who desires to join us. Your names will be added to the distribution list as dues are received. If you feel that you should have received your newsletter and you did not get one, please contact one of us or Laura Sanders; we will get it corrected.



Sew 'n Save
of Racine

Check out our website for new arrivals, top sellers, and sale items!
These emails will give you the best and most recent information you need!
Keep in touch with us by visiting our website!

Be part of our fabulous classes and events!
It's only a click away!!

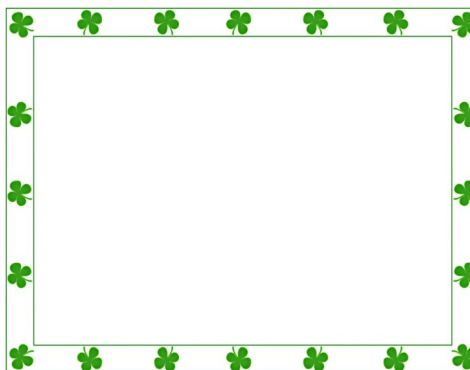
Friday, March 18th
1:30pm - 4:30pm
Quilt for Soldiers
and Others in Need
Call the store for information
262-554-8708

Monday, March 21st
1:00pm - 4:00pm
Fabulous Fabric
Box Mystery
[Click here to sign up!](#)

Wednesday, March 23rd
1:00pm - 4:00pm
Lori Holt Club
[Click here to sign up!](#)

Monday, March 28th
10:00am - 5:00pm
Sewing Social
[Click here to sign up!](#)

Lighthouse Quilters Guild
P. O. Box 081153
Racine, WI 53408-1153
www.lighthousequiltersguild.com



May your blessings
outnumber the
shamrocks that grow



LHQ Marketplace

FS: For Sale F: Free ISO: In search of SO: Service offered SN: Service needed

F: Free fabrics! A box of men's ties, some felt, a bit of upholstery, a sheer fabric that was part of a show challenge (sheer pink). Must pick up—no delivery!
Janet Kuhl 262-639-6907


F: 3 yard tan ultrasuede fabric + lining fabric and pattern for a suitcoat

Judy Martin 920 265 9758

SN: Machine quilter proficient in custom quilting.
Pat Henningfeld 262-994-0134


F: Quilt hoop on a stand—a little wobbly

Sue Causey 262 681 6676 or sue@suecausey.com



Sue Causey, CRS
Broker Associate
262 681 6676
Sue@suecausey.com

Sell or buy—I'm your guy!





www.OpulenzaDesigns.com/laurasanders

Spring Open House
March 22 - 4 to 7 p.m.
Artisan Crafted Sterling Silver Jewelry

Laura Sanders
1836 Coach House Drive, Mt. Pleasant
262-672-5014

10% of the proceeds from this Open House will be donated to Lighthouse Quilters Guild



Classified ads are free to LHQ members. Display ads are \$5/issue, \$45/yr for LHQ members
Submit ad to Sue Causey no later than the 5th of the month for the next month issue

Newsletter Editors/Website Coordinators:

Sharon Matusевич: matusевичus.att.net Sue Causey: LHQ.SueCausey@hotmail.com