

D-VAC

HVAC PRODUCT NEWS

IN THIS ISSUE

- **Melteks**
- **Electro-CHEM**
- **Stelpro**
- **Other Products**
- **New ACCW Coils**
- **Air Zoe**

Melteks Inc. is the original and only manufacturer of a **"patented"** low thermal mass snow melt platform system.

The concept was designed and developed to provide a faster, more economical approach to a snow free surface, in areas that induce great risk due to snow and ice buildup. Although traditional snow melt systems function, the installation and operational costs have been prohibitive for most applications.

The Melteks modular system now allows customers to eliminate snow and ice in a matter

of minutes, while reducing operational costs by up to 75%, when compared to a in ground system.

Our concept is based on utilizing conductive aluminum alloy extrusions as a platform, which has a low thermal mass and a unique water drainage system. Since the system has the ability to melt snow within minutes from a cold start, and provides for water drainage instantly, there is never a need to provide the traditional idle time to heat a massive concrete slab. This instant heat begins to melt snow immediately and shuts down as soon as the water has drained off the surface, **providing a reduction in operating boiler time of over 75%.** These saving provide a rapid return of investment, while providing the convenience of a snow melt system and the

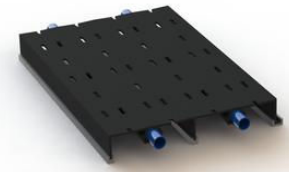
safety of eliminating all snow and ice for every snowfall.

The complete package is developed around **a modular system that can be installed in hours**, compared to a complex in ground system. For night illumination, we can supply recessed LED lighting within sections of our platforms.

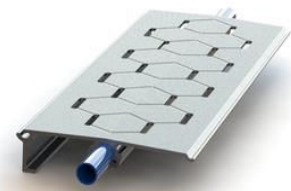
Design and engineering of a layout is provided as a service to our customers. The modular system can be installed over any existing surfaces, and carries a guarantee of 10 years.

Applications Include:

- Rooftops
- Commercial driveways
- Residential driveways
- Sidewalks
- Wheel Chair compliant areas
- Direct door entrance areas
- Mitered corners
- LED access lighting
- Access platforms
- Parking Lots



Commercial Snow Melt Element with two step black anodized finish, hydronic heated and slot structure for melt water drainage



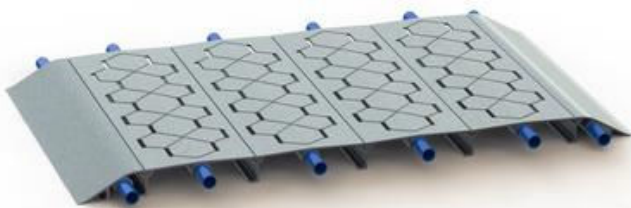
Residential Snow Melt Element with Honey-Comb, clear aluminum finish

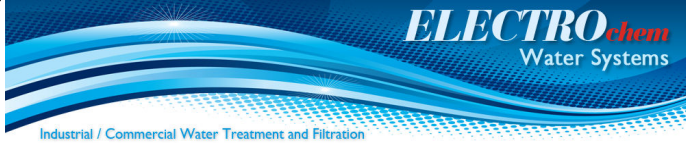
And there's more....choose our black anodized finish and our patented system can deliver

Free Hot Water

to homes or facilities for 8-10 months out of the year as our platform will absorb and transfer the sun's energy into water in the system tubes.

"Never worry about shoveling or slipping again"





INDUSTRIAL AND COMMERCIAL ENERGY/WATER MANAGEMENT SYSTEMS - A TOTAL TREATMENT SYSTEM

- **Electrostatic "Patented" Technology**
- **Removal of Suspended Solids**
- **Control of Dissolved Solids**
- **Monthly Water/Energy/Equipment Efficiency Reports**
- **Energy Management applied to Open and Closed Loop circulating water**
- **PLC Automated System Skid**

Objectives - Reduce energy and water use by increasing mechanical systems efficiency factors

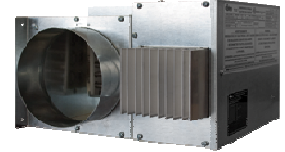
Increase thermal transfer across moving liquid and heat exchange surfaces



Typical Benefits in Cooling Tower Open Loops

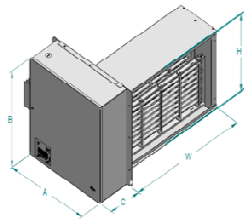
- 12-15% energy savings
- 25-30% water savings
- Increased equipment life cycles
- Lower chemical use / environmental footprint
- Decreased maintenance
- 2-3 Year ROI – Financing available
- **Available for 500+ ton Systems**

Take control of your comfort... Whether it is for preheating ventilation air or for heating a room, the **SDHR** is powerful enough to raise the temperature to the desired level. Its modulation system and temperature sensor will give you accurate and efficient performance. Moreover, its modular system will facilitate installation and maintenance. Available from 6-12" sizes and multiple capacities, there is certainly a model for you.

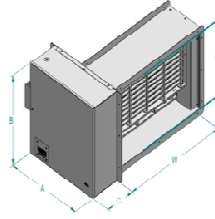


SDHX SERIES - CUSTOM DUCT HEATERS

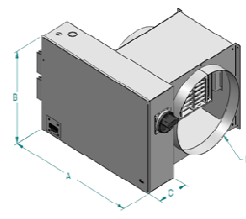
(I) Model SDHI



(F) Model SDHF



(R) Model SDHR



DESCRIPTION					Width x Height or Diameter				Options
Qty	KW	Line Voltage	Phase	Control Voltage	W	H	D	Options	

All units are UL listed with control transformer, air switch and contactor included.

SDR modulating controllers, disconnects, temperature sensors, digital temperature displays and many other options are available.

The Swiss Army Knife of Ventilation

°Stelpro innovates once again with its new **SCV** ventilation cabinet for residential and commercial use. The **SCV** ventilation cabinet is available in four practical formats with a variety of controls and ECM or PCM motor, to meet the requirements of all types of installations. Its flexibility, versatility and optimized controls make it the Swiss Army knife of ventilation. **CFM ranges from 400-2200** with optional electric heaters or heating/cooling coils.

The **MUA** "mini make up air unit" distributes tempered fresh air to provide maximum comfort to the occupants in a well-ventilated home or office. The heating elements modulate continuously, allowing to heat fresh air at a lower cost. Compact and flexible, this unit has multiple installation positions (horizontal, vertical upflow or downflow). The **MUA** meets ASHRAE 62.2 requirements.

For larger make up air applications use our **SEF** or **SFE** series units. See specification details on all °Stelpro products at <http://us.stelpro.com/pro/cvac/>



ZIP-A-DUCT™



Our New Fabric Air Distribution System works on systems from 3-25 tons, **saves the contractor up to 75% on labor** and provides a much higher comfort level throughout the conditioned space over spiral duct with air registers. Available in standard **Gray** for same or next day shipment; or **Red, Blue, Green, Black** or **White** (3-4 week shipment)

Condensing Boiler and Boiler Packages

Ranging from 200,000 to over 54 million BTU!!

Stand Alone, Skid Mount or even Portable Container Systems

"Patented" Heat Exchange Technology



D-VAC Sales....Your Source for HVAC Commercial Specification Products

Heating & Cooling Coils, Exhaust & Supply Fans, Louvers & Dampers, Fire-Smoke Rated Dampers, Electric Heaters, Electric Make Up Air Units, Heat / Energy Recovery Units, Air Handlers, Condensing Boilers, Snow Melt Platform Systems, Air Cooled Fluid Coolers, Air Cooled Condensing Units, Water Treatment Systems, Fabric Duct Systems, Air Outlets, VAV Units, Humidifiers, Dehumidification Units, Portable AC Units & COP-HVAC Analyzers



ACCW Series Cased Chilled-Hot Water Coil

NEW Dual Drain Pan Units are perfect for Geothermal applications, as well as standard Chiller and Boiler applications.

1.5 –10 ton Cooling Capacities

24,000–300,000 BTU
Heating Capacities

For performance details go to: <http://www.dvachvac.com/products.html> and click on ACCW Series

Also Available: **ACWH Horizontal Chilled-Hot Water Coils**

go to: <http://www.dvachvac.com/products.html> and click on ACWH Series

1.5 –5 ton Cooling Capacities
20,000–200,000 BTU
Heating Capacities

Part #	Width	Depth	Height	S (01)	S (02)	Conn. OD	Conn. Vents	Drain Lines
ACCW-18E	14	20 3/4	14	11 3/4	15 3/4	7/8	1/8	1/2
ACCW-24	14 3/4	22	13 1/2	13 1/4	20 1/4	7/8	1/8	1/2
ACCW-30E	18	20 3/4	16	15 3/4	17 3/4	7/8	1/8	1/2
ACCW-36	17.5	22	16 1/8	15 3/4	20 1/4	7/8	1/8	1/2
ACCW-42E	22	24 3/4	18	19 3/4	19 3/4	7/8	1/8	1/2
ACCW-48	21	22	18 1/8	19 1/2	20 1/4	7/8	1/8	1/2
ACCW-60	24 1/2	22	21 1/8	21	20 1/4	1 1/8	1/4	1/2
ACCW-60E	26	28 3/4	22	23 3/4	23 3/4	1 1/8	1/4	1/2
ACCW-84E	44	24 3/4	22	41 3/4	19 3/4	1 1/8	1/4	3/4
ACCW-120E	52	28 3/4	28	48 3/4	23 3/4	1 1/8	1/4	1

Need A Job Quote FAST?

Our Air Zoë commercial air movement division is growing....up 200% from last year. All types of **Fans, HRV/ERV, Commercial**



Commercial Fans



Control Dampers

Zone Controls, VAV Terminal Units, Air Outlets, Louvers & Dampers are now available!



Louvers

Commercial H/ERV



Send Us Your Schedule!!!