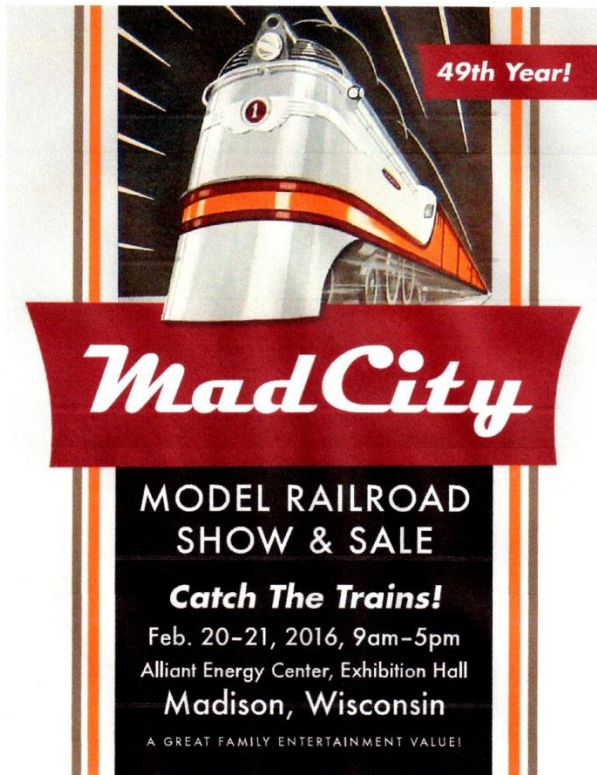


February 2016

www.nmra-scwd.org

Volume 47 No.6



49 years and still growing

It is very hard to believe that our train show started out as what was supposed to be just an open house at a location up on the square in Madison has now continued on for 49 consecutive years. The members hosting that

Next SCWD Meet:

February 7th 2016 1:00 pm.
Zor Shrine Temple
575 Zor Shrine Place
Madison WI

Clinics: See page 3

Model & Photo Contests:

Trackside Structures

Next BOD Meeting:

February 15th, 2016 7:00 p.m.
Fitchburg Fire Station

Next Youth Group Meeting:

February Train Show

small show that opened its doors in 1967 were amazed at the number of people that showed up. The show began growing and moved to different locations until we settled at what was then called Dane County Expo Ctr. This year we celebrate 20 years at the Alliant Energy Center's Exhibition Hall.

There are always challenges and opportunities for the show staff and other volunteers to face each year. We do have a fine group of division members who volunteer for the show as well as Boy Scouts from the surrounding area. I want to thank all of them not just for this year but for all the work they have done over the years.

The scouts are coordinated by NMRA life member Bill Mitchell who sees that all runs well in the wooden

train/video room. Bill also helps to fill in the gaps where we may need some extra staffing with Scouts. You will see them ticket punching, passing out magazines and helping attendees find their way around.

The Great SCWD Rail Show Round Up has been a success again this year although a few members had other plans and can't make the show because of travel. How could anyone pass up a train show just for an opportunity to take a river cruise in Europe or something like that? I'm amazed.

Super's Report

Bob McGeever

Division Superintendent

It is February so we are deep into the busy season of the SCWD. AKA, the Volunteer season. We are all real busy so I will try to keep it keep it short this month.

We just had a very successful Rail School. It is the first one we have held at the Zor Temple. We had fifty- six division members and eighty-one guests participate. And we are just about to hold the 49th annual Mad City Model Railroad Show and Sale. Every active member of the Division along with eight to nine thousand of our closest friends will be there. I knew about the Rail School and Rail Show long before I joined the SCWD. They are annual events that made me aware of the SCWD and prompted me to join it. The Youth Group came to my attention after I joined up. The volunteer support for the Rail School and Rail Show has been very strong. I would be preaching to the choir if talked about the importance of the volunteers for these activities. The support for the Youth Group is growing but it could use a little more support from the membership. If you have any ideas for a clinic that would interest a beginner in our hobby, I suggest you try it out at the Youth Group. They are a great audience but have a limited attention span. So you don't have to fill out a full forty five minutes. A twenty minute clinic works great at the Youth Group. If you want to hold their attention for more than twenty minutes, make it a messy hands on clinic. Paul Balfe recently did a clinic on basic scenery techniques involving dilute white glue and wet water. It was a big hit. Most of the Youth Group members had never had

a chance to see someone working with basic scenery materials.

The monthly Division meetings are primarily for the benefit of our membership. The Youth Group, the Rail School, and the Rail Show are different. Through these three activities we try to give back to the community we live in and promote the hobby we are dedicated to. So please keep volunteering. We can't do it without you.

Speaking of the Rail Show and volunteers, the Rail Show committee is making a few adjustments this year in the way we do things in the new show space. We have a new floor plan for the ticket area that will separate the lines of folks waiting to buy a ticket from the folks who already have a ticket. Since we will have separate lines, we will start selling tickets at 8:30 to move folks into the ticket holder line before we open the gates at 9 am. We are moving the badge table out of the west hall and into the main hall. It will be located just inside of loading dock B. Now folks won't have to make a special trip into a different part of the facility to pick up their badges. Lastly, we want to do a better job on the show judging. We give out a variety of best of show awards for Clinics, Layouts and Exhibits. Somewhere along the line the judging evolved into a Board of Directors responsibility; and we on the BOD have been bad judges. Most of us on the BOD are spending all day at the Show and yet we barely find time to do the judging. Worse, we have not been trained. The judging needs to be completed on Saturday so we can hand out the awards on Sunday. This year we would like to assemble a team of volunteers who will have the time and the training to do the job properly. Since Fred Robinson put on a nice clinic about contest judging, I have asked him to put together some training and a plan for the show judges. We will be asking for volunteers at the February meeting. Most of you will be attending the show for a couple of hours. While you're there, if you could pitch in for a little bit as a show judge it would be greatly appreciated. These awards really mean a lot to the show participants. We owe it to the show participants to do a better job.

Hope to see you on what has become our annual Super Bowl Sunday meeting,

Bob

⊗

Youth Modeling Project Entries at 13

Ewing Row

Model Project Chair

With two new members and another who hadn't yet had a chance to enter the Modeling Project for 2015-2016, Youth Group entries in the annual event stopped at 13. The total is the same as the previous record established in 2007-2008. That is as far as my records go back. Last year only six Youth signed up and all completed their branch-line station projects.

The number of adult members paying their \$10 and receiving "water-diorama" kits remains at 22, one short of last year's 23 and two below the average of 24 for the past eight years.

How many of you have "poured" water? Did your first attempt find a leak or did you seal your pond-lake-river-creek well enough? Have you added any turbulence to the water surface?

Time isn't short for the April popular vote, but it will be. Only three months left.

Ewing Row

⊗

Contest Column:

David Lendved

Contest Chair

The theme for the February Model/Photo contest is "Trackside R.R. Structures." These are Railroad buildings along the tracks. Models can be built from kits, scratch built, or kit bashed; they can be freelanced or prototypical. All are welcome.

Railroad structures can give the Road its own "feel" and identity. They can also place a pike in a particular time and place. A station may be a busy passenger terminal in one era and a humble storage shed at a later time. It might have a new life as an upscale restaurant in the modern era.

I know it's harder to bring in a building than to roll in a freight car. Still, I'm confident we'll get a lot of entries. We haven't had a contest like this for a while so I'm counting on "pent-up demand".

Categories are:

- A. Sheds and Shanties
- B. Coal/Fuel/Sand/Water
- C. Passenger Stations and Facilities
- D. Freight houses, Loading Docks, Etc.

Dave

⊗

Layout Tours:

Phil Hottmann

We are going to try something a little different for this meeting.

Instead of traveling for our layout tour we are planning to try a video. Given that it is Super Bowl Sunday and some folks may want to get home early.

We will be featuring the Greeley Freight House Museum Layout. If you haven't seen this, this is a spectacular layout.



Thanks

Phil

⊗

The Clinic Corner

Fred (Rob) Robinson

Clinics Chair

Rail School was a success. The "Paint a Rock" clinic I showed a meeting or two ago was a big hit. Thanks to the help of Ken Hojnacki, Webb Winn, and my wife we had over 100 "rocks" for participants to paint. We used about 60 "rocks". The painters ranged from 3 years old to the "still plays with trains" age.

We have two clinics on the ready tracks for February. Sean Lamb will discuss "What's new in the Wicki Project Trains". Cheryl Mitchell has a clinic on "The secret life of trains". Both should be good clinics.

March has one long "make and take clinic". You need to sign up for Ken Hojnacki's "Steel Coil Loads". He had a sign-up sheet available at Rail School. The February meeting will be your last opportunity to sign up for his clinic. Otherwise, you will be watching videos.

Rob

⊗



Midwest Region News

Happy New Year to all. The year has started up with a bang. SCWD held its yearly Model Rail School on January 10th 2016 and had a real good attendance. Young and old alike were treated to displays and mini clinics that spanned the hobby from N to G Scale and from scenery to layout construction. A great day of fellowship was had by all.

As of this writing the Central Indiana Division (CID) will have had their annual train show in Knoblesville Indiana on Sunday January 31st.

Now February has come to call: that means that the SCWD will present the 49th annual Mad City Model Railroad Show and Sale on February 20th and 21st. Next year will be the 50th anniversary of this show. It has grown from just an open house to over 90,000 sq ft of floor space. Although it is not the biggest train show around it could very possibly be the longest continually running show.

The Fox Valley Division will host the 2016 High Wheeler show on March 5th and 6th in Paletine IL at Harper College. Then the Rock River Valley Division will host their annual train show on March 19 & 20 at Jefferson High School in Rockford.

Speaking of the RRVD, The combined meeting of the SCWD and RRVD is on May 1st this year at the Zor

Shrine Hall on Madison's west side. (please go to the SCWD web site for a map of www.nmra-scwd.org).

The National Convention will be in Indianapolis this year sponsored by the Central Indiana Division and this means the MWR will not have a spring convention. The SCWD has agreed to host the spring MWR Board of Directors meeting prior to their meeting on the 1st of May. The Board meeting will be called to order at 10 a.m. Any NMRA member is invited to attend these meetings and observe what transpires.

The annual meeting of MWR members will be conducted at the start of the SCWD regular meeting that begins at 1:00.

If you haven't heard me talk enough about conventions and train shows, here is another one.

National Conventions:

Looking forward to summer 2016, The Midwest Region's Central Indiana Division (CID) will be hosting the Highball to Indy National Model Railroad Convention. National conventions are a great way of celebrating our hobby and enjoying the fellowship with a large gathering of our members.



For more information on the National convention please visit the NMRA web site at www.NMRA.org

Or go to our electronic edition for a sign up form at www.nmra-scwd.org and you can be on board.

I'm looking forward to seeing you there as I hope you can join us for a great time.

Paul Mangan
President
Midwest Region

⊗



Red Book Report:

The Red Books have arrived!

Red Books will be available for pick up at the February meeting.

Paul



SCWD Board of Directors Meeting Minutes December 14, 2015

The Board of Directors meeting for the 2015-2016 South Central Division, Midwest Region, National Model Railroad Association was called to order at 7:04 pm on December 14, 2015 by Superintendent Bob McGeever. In attendance were Directors McGeever, Phil Berry, Phil Hottmann, Bill Clancy, Mike Vivion, Alan Paine, John Haverberg and Fred Robinson and guest David Lendved. Bob declared a quorum present.

A motion was made by Fred, seconded by Mike and approved by the Board to accept the minutes of the 11/09/2015 Board Meeting as submitted.

Phil B. presented paymaster's reports for the month of November. 2015. Fred made a motion to accept, Bill seconded and the Board approved the report as presented.

Committee Reports:

Achievement Program: Ken Hojnacki will make a presentation encouraging AP participation at the March 2016 member meeting.

Bad Order: Kathy Clancy has offered to take over the editing of the Bad Order from Paul Mangan. Mike moved to accept Kathy's offer, Fred seconded

and the Board unanimously approved the motion. Kathy will work with phase in her take over of the editing job over the next few months.

Club Liaison: Alan reported the next area Model Railroad Show is at the Holiday Inn in Stevens Point on Jan. 16 & 17, 2016.

Clinics: Fred reported that the making of steel coil loads will be at the March meeting. Bill said he is preparing a clinic on the bragdon method of scenery building for next spring.

Contests – model and photography: David would like to report the results of both contests before the last meeting break to allow attendees to view the winners one more time. John suggested listing the previous meeting winners in the Bad Order to get wider coverage.

Layout Tours: Phil said no tours would be available in Jan. (Rail School) or Feb. (Super Bowl Sunday). March will be Bob McGeever and Web Winn. Phil is still working on April and May. There will be several in May on the Joint Meeting date with RRVD.

Publicity: John reported that notices for all SCWD spring meetings have gone to the hobby magazines as has a notice for the Mad City Rail Show. Bob Boelter is handling the rest of the Rail Show publicity including paid ads and all the local newspaper, TV and radio outlets. Bob will put a paid ad in the State Journal for the Rail School in January; John will put a notice in the paper for the weekly events listings.

Rail School: Bob M. indicated that setup and tear down needs attention particularly with our new venue location at the Zor Shrine Center. Otherwise the preparations are on track.

Rail Show: Progress is on track. Phil B. reported that about 175 tables have been sold to date. Ticket booths have been renovated and plans are being prepared for a new floor plan for the booth locations.

Youth Group: The youth group will be viewing the trains and displays at Olbrich Gardens next week. They will also be at the Rail School in January.

Old Business:

1. Red Book: The Red Book, updated for 2016, has gone to and come back from the printers and will start to be distributed to SCWD members starting at the Rail School on January 10th.
2. Upcoming prototype events: Bill has talked to John Fisher and will evaluate the best way to get and distribute information on regional prototype upcoming events to SCWD members perhaps including at SCWD meetings, SCWD website, Bad Order articles and others.

New Business:

1. Blue Box Kits for Rail School: Bob said SCWD has a chance to purchase 40 @ \$6 each from Larry Bunce and 29 @ \$5 each from Keith Thompson to add to the 100 we bought from Capt. Al at \$6 each back in July 2014 to add to what we have left from past Rail School purchases and use. These kits have been central to the make and take feature of the Rail School but are becoming hard to get. Alan moved, Fred seconded and the Board approved the purchase of the kits per above. Mike suggested requesting the NMRA Midwest Region reimbursement for purchase of these kits per their model railroad educational support. Bob will look into the paperwork to do so.

2. Mike polled the Board for those willing to run again for the Board in the spring election. There will be at least two new openings to fill at the April election. Any SCWD member can run for election to the Board and should contact Mike to get on the ballot.

Adjournment: Fred moved, Phil H. seconded and the Board approved adjournment at 8:30 pm.

Respectively submitted by
John Haverberg, Chief Clerk



AP Corner:


Ken Hojnacki
AP Chair



Don't forget we will have a hands-on construction clinic to construct a coil steel load complete with carrier in HO, N and other scales if you desire, at our March meeting. You will construct four coil steel loads with banding and a steel I-beam carrier for use in a 40-42' gondola out of styrene and two wooden timber carriers from stripwood. All materials will be provided but if you want to bring a scale rule, a sanding tool, and/or your favorite paint brush and any other modeling tools, please feel free. All parts will be cut to length and will need some finishing. We will paint the coils but painting the steel carrier will be up to you in your own workshop. A PowerPoint presentation will take you through the construction steps and at the end, you will have a unique load you can proudly say you built yourself. If you didn't sign up at Rail School, we will have a signup at the February meeting or you can email me at khojnacki@charter.net with your name and scale preference.

Ken





**HAVE 50 MODEL RAILROADING CLINICS
RIGHT IN YOUR LIVING ROOM.**


Just because you can't make it to a national convention doesn't mean you have to miss out. Right now the NMRA's Kalmbach Memorial Library has over 50 DVDs of clinics presented at national conventions from 2002 to 2010. All available to NMRA members for the cost of postage.

So you can see clinics on everything from decoders to design, tools to techniques, helixes to highways, and research to resin casting.

All from the comfort of your very own couch.

Visit www.nmra.org and go to the Kalmbach Memorial Library page for a complete listing.

Then, get that popcorn ready.



We make it even more fun.
www.nmra.org
423-892-2846

*****Attention SCWD Members*****

Call For Candidates



If you have an interest in placing your name on the ballot for the SCWD Board, please contact either Bob McGeever or Mike Vivion as soon as possible. There will be at least two open positions to fill this coming Spring.



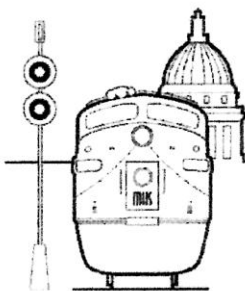
BOB BOELTER'S O SCALE GREAT WESTERN RAILROAD HAS MOVED TO STONEFIELD



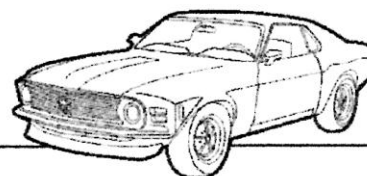
The model railroad has been donated to the Wisconsin Historic Site in Cassville to be rebuilt in one of the village's buildings (see stonefieldhistoricsite.org). Funds have to be raised for the reconstruction. Contributions can be made to Stonefield Historic Site, 12195 County Highway V V, Cassville, WI 53806 and identified for "Stonefield Model Railroad". If you'd like to help in other ways contact Bob at bboelter1@gmail.com



Visit gwrr.org for layout pictures and more information



MADISON HOBBY STOP



6622 Mineral Point Road, Madison, WI 53705

phone: 608.829.3820 • fax: 608.829.3842 • www.madisonhobbystop.com

Hours: Monday - Friday (10am - 8pm) and Saturday (10am - 5pm)

Model Railroading • Plastic Model Kits • Rockets & Accessories • Pine Car • Paints • Tools and more!

SPECIALS!

Happy New Year to all our customers supporting me last year and for making another good year. I look forward to serving you in 2016 and future years.

New items arriving daily in all scales.

Preorders are 25% off regular price except Walthers Proto which is 20% off.

We are open Sunday's 12:00-5:00 pm.

New/old consignment coming in weekly, stop in for best selection.

**Atlas and Athearn new items starting to come in finally
thank you for your continued support**

Remember, most model railroad items are 20% off

With a valid NMRA or other club id card

Excludes discounted or sale items, magazines, and consignments

20% off Athearn, Atlas, Kato, and Life-Like

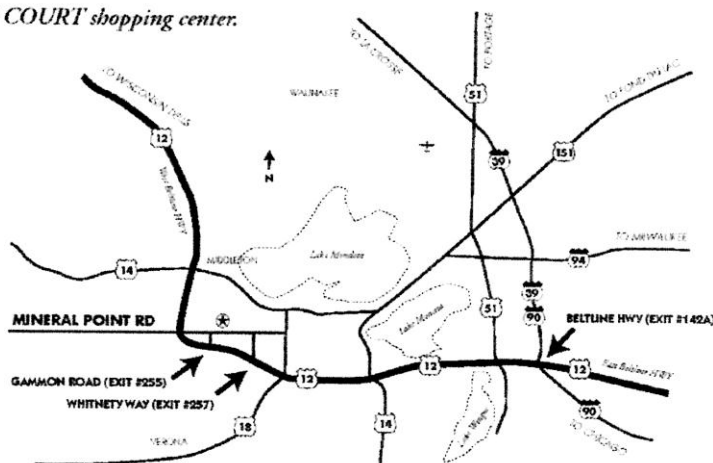
Pre-Orders

Authorized Lionel Dealer

Located INSIDE the CLOCK TOWER COURT shopping center.

Directions:

From points east: Take I-39/I-90 to exit #142A to East Beltline Highway. Proceed west for 12 miles and take Gammon Road exit #255 north to Mineral Point Road. Take a right on Mineral Point Road and then left on Grand Canyon Road, then turn right into the *Clock Tower Court Shopping Center*. Distance from I-39/I-90 exit #142A to Gammon Road exit #255 via Beltline Highway is 11.8 miles. **From points west:** Take the west Beltline Highway east to Gammon Road exit #255. Take Gammon Road north to Mineral Point Road. Take a right on Mineral Point road and then left on Grand Canyon Road, then turn right into the *Clock Tower Court Shopping Center*.



Adair Shops™

ADAIR SHOPS

Weight Upgrades for Improved Model Railroad Operation



Weight upgrade kits for HO freight and passenger cars (RTR and kits)



HO steel plate and beam load kits



HO & N bridge kits

For a complete list of kits, along with additional photos and sale items, visit our website.

www.adairshops.com

Adair Shops, PO BOX 344, Dyersville, IA 52040
adairshops@yousq.net

HOBBY HORSE

RADIO CONTROL • HOBBIES • CURLING SUPPLIES
DIVISION OF HOBBY HORSE WISCONSIN, INC.

JIM BIERSACH
President

1769 THIERER ROAD
MADISON, WI 53704
hobbyhorse@hobbyhorse.com

(608) 241-3491
FAX (608) 241-1313
1 (800) 604-6229

Train Guyz LLC

We can make your Model Railroad dreams come true

2903 Robin Court
Fitchburg WI. 53711
608-215-6346
Vivion2@tds.net

Mike Vivion

South Central Wisconsin Division of the National Model Railroad Association

Publishes eleven issues yearly of the

BAD ORDER

Official Mailing Address:
BAD ORDER
3940 Trempealeau Trail
Verona, WI 53593

Photos in the Bad Order, unless otherwise noted, are by
Kathy Clancy

Deadline for submissions: **14th of the month**
prior to publication, unless otherwise noted.

Email Bad Order Editor at
SCWDKATHY@AOL.com

Lake States Railway Historical Association, Inc.
Dedicated to Professional Collections Management

Richard R. Goddard
President

BARABOO ARCHIVES
330 Lynn Street
Baraboo, WI 53913

Phone 608-356-5555 Web: www.lsrha.org
E-mail: lakestatesarchive@gmail.com

LSRHA is a 501-c-3 non-profit educational corporation

...THE RAILWAY MODEL BUILDER'S RESOURCE...

We are now located in our new building at the corner of Roundhouse Court and Lynn Street in the historic Baraboo rail corridor. Stop in for a tour, browse through our extensive library and archives, view our large collections of 1000's of C&NW, CStPM&O, CMS&P&P, CRRR, ICRR and other line's structural, locomotive and rail car detail drawings and photos from 100 years of railway history! Phone 608-356-5555 or email us at lakestatesarchive@gmail.com for our hours of operation and additional information.

◆ SEE OUR WEBSITE AT: lsrha.org

The Hobby Depot

Brian Stackpole, owner



See us on the web at: www.hobbydepotmonroe.com



835-17th Street
Monroe, Wisconsin 53566
Phone: 608-325-5107

Call ahead to be sure we're open!
email: hobbydpo@tds.net

TRAINS & MORE

From the files of Errata Data:

Paul Mangan

In the Errata Data files one can sit and wonder where this stuff comes from. When I started the column I was always trying to compare things in the real world with things in the modeling world. Over time things went in a lot of different directions. This month I'm taking it back to the basics. So here we go.

I know I have been talking about conventions and train shows lately so I hope I haven't board you all silly.

I do spend a lot of time on Facebook as our train show page is on there for me to take care of. One day I'm scrolling through and I found this:



Photo from Facebook

It got my attention because my wife and I and a few other SCWD members had the opportunity to ride on this NAPA Valley Wine Train behind #71 while attending the NMRA convention at San Jose in 2000. And what a trip it was. The train casually runs along the line that passes a lot of the wineries in the valley. Enjoying a wonderful meal and few glasses of nature's finest harvest of the vines in first class is worth the trip.

Out on the Cat Mountain Railroad a winery has been built to supply the residence of Myleana Point with adult beverages during the long winter months when the line is shut down because of the snow storms.

This year Mother Nature has been easy on the town. The heavy snows have held off and the local football team is going to the Super Bowl.

This year the Cat Mountain Cats professional football team has hired the Napa Valley and Santa Fe railroad to take all the cats to the Kitty Bowl. I got this photo of old 71 as it just cleared the crest of the hill.



I hope you felines have a good time and don't have too much nip. ^ .. ^

All kidding aside, the Napa Valley Wine Train is quite an experience. If you ever get in the area of Napa Valley CA do yourself a favor and buy a ticket and ride this train.

I hope you have enjoyed Errata Data as much as I have enjoyed the sometimes silly things I write about. I did inform Kathy that I would write some Errata Data if she needs some fill.

See you by the rails

Paul



Photos from Rail School





From the Traingirl

Hello everyone from your new Bad Order Editor! Some of you know me from coming to our home to visit Bill's layout or have seen me at the monthly SCWD meetings. You are probably wondering how did I ever get the honor (or curse) of being Editor.

It all started with Mike Vivion. He has been spending quite a lot of time with Bill getting the "Ship It" program up and running. On his arrival, I offer him a cup of coffee before they get started. This particular day Mike responded "oh, I have something I want to talk to YOU about". As Mike began telling me the history of the organization while complimenting me profusely on my recently noticed computer skills, I stopped him and asked "am I being smoozed??" He laughed and got the point "would I consider being the new Editor of the Bad Order". So if this doesn't work out or you are unhappy with the newsletter, I wanted you to know who to blame!

As Editor, I would like to invite all members to contribute! This is your newsletter and I would like to give everyone an opportunity to participate. For example, have you been on an interesting train ride/vacation that you could share a photo and/or website link; do you have a nifty modeling tip or the opposite made a huge modeling mistake that you would like to share; have you discovered a new use for a household item that makes you shout "why didn't I think of this before!".

Just send me an email by the 14th of the month and I will try to get it in the next issue if space permits.

Kathy Clancy
scwdkathy@aol.com

For more SCWD and NMRA news and information go on-line to our web site at www.nmra-scwd.org and visit the **Bad Order** on our web site.



PLEASE PATRONIZE OUR AREA HOBBY STORES

Hobby Horse – 1769 Thierer Road – Near East Towne, Madison WI

The Hobby Depot – 835 17th Street – Monroe WI

Madison Hobby Stop – 6622 Mineral Point Rd (inside Clock Tower) – Madison WI *

* = Train Show Ticket advance sales

2015 - 2016 Meeting Time Table

Regular Meeting

Feb 7th 2016

Mar. 6th 2016

April 3rd

Train Show Staff

Feb 3rd 2016

BOD

Feb 15th 2016

Mar 14th 2016

April 11th 2016

Youth Group

Feb. Train Show 2016

Mar, 20th 2016

April 17th 2016

Additional

Rail School

Photos





News

From

National

An article from Frank Baker, Acting NMRA Marketing Director:

I received my first train set at the very early age of two. Along with my early entry into the hobby, came a desire to know more about how this wonderful toy worked. I was hooked. While that train set no longer exists, I grew up surrounded by trains. Up until I was nine, The Erie Railroad was 4 houses up the street. My neighbor was Grif Teller, the famous artist for many PRR calendars. He also had a Buddy “L” set that I would drag out of his garage and set it up in my backyard. At nine, we moved to another town and the DL&W was my new neighbor. Trains were part of my formative years. This is a wonderful hobby and the achievement program has helped me in many ways. Friends and fellow modelers know that I have a passion for scratch building structures.

Before retirement, I was Director of Sales & Marketing for an Arizona based company, with customers around the world. I retired six years ago and really immersed myself into the hobby, just ask my wife. Since then I have been the editor of our division newsletter and publicity chair for our 2015 regional convention.

Earlier in the year I raised my hand letting Charlie Getz know of my interest in the NMRA marketing position. At our PSR regional convention in September, Charlie announced this to everyone. We all know that the hobby is changing much like everything else in the world. Today’s young are more interested in that little black box called a phone and seem to dwell on its ability to do almost everything. Our population is aging, adults are working more and the hobby is seeing declining in numbers.

Bringing back the heyday of model railroading is probably an impossible task, but developing new and exciting elements of the hobby across a broad spectrum of age related hobbyists or potential model train enthusiasts, might just work. This is going to be a challenge and will require thinking “out of the box” and the help of everyone to refine, create, and implement new solutions to attract a new generation of model railroaders and retain many of the existing members. I look forward to working with everyone in this challenging position and having your help to excite, inform and grow the NMRA.

NMRA

Frank C. Baker

Acting NMRA Marketing Director