

Senate Bill 150: Transportation Governance and Funding Amendments (Harper/Christofferson)

Senate Bill 150 enhances the coordination of transportation, housing, and land use at TOD sites. It also modifies provisions related to TIF/TTIF, TRZs, UDOT's RUC program, and other provisions.



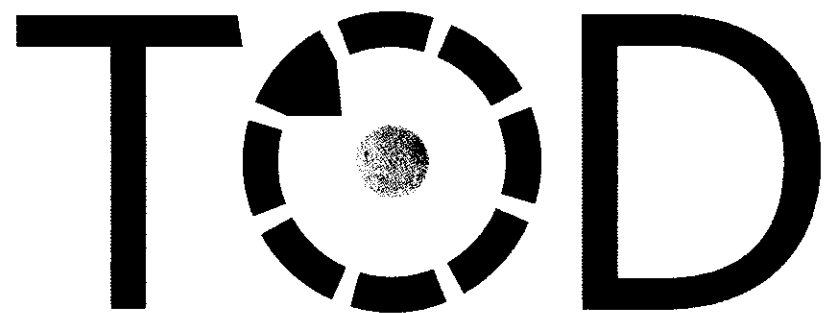
Transit Oriented Development (TOD), UTA, and Transportation Funding

- Eliminates the cap of eight (8) TODs in which UTA can participate.
- Requires any local government to submit a "station area" plan and comply with other statutory requirements.
- Requires compliance with Senate Bill 34 for moderate income housing.
- The State Transportation Commission can prioritize projects that are part of a transit-oriented/supportive development or Transportation Reinvestment Zone (TRZ) when selecting new capacity public transit projects.



Road Usage Charge (RUC) Program

- UDOT will provide a plan to enroll all vehicles registered in the state in the RUC program by December 31, 2021. UDOT will identify how it will expand the program and submit an annual report.



Transit-Oriented Development Procedures

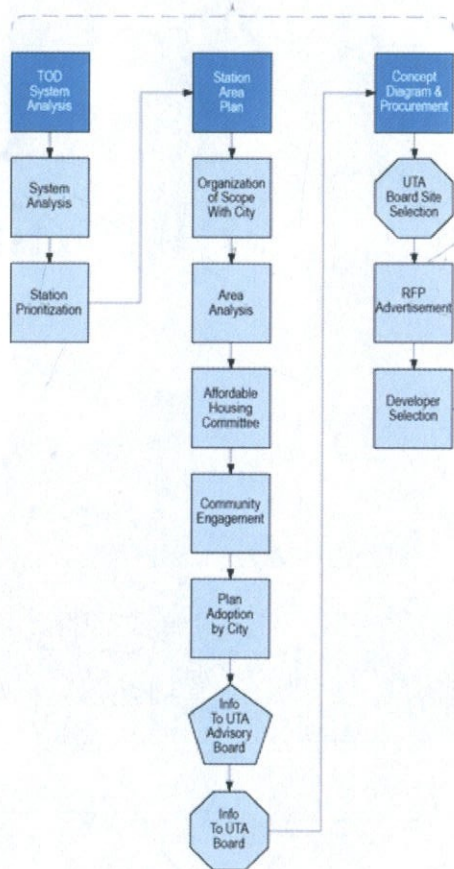


Utah Legislation

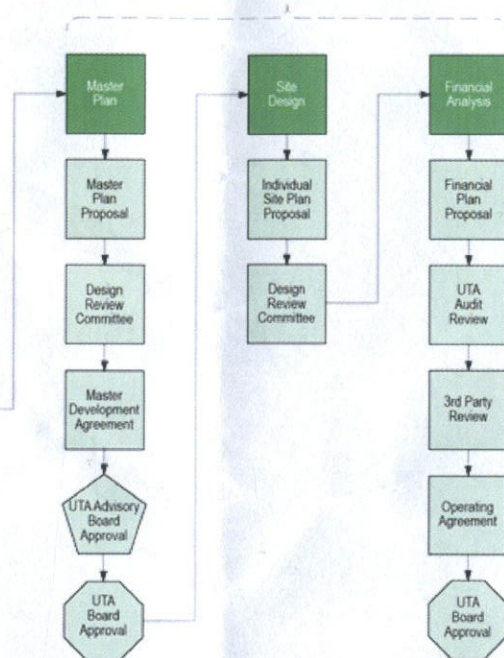
Allows UTA to pursue joint ventures at 8 TOD sites

- Sandy Civic Center
- Jordan Valley Station
- South Jordan Station
- 3900 S Meadowbrook Station
- Provo Central Station
- Ogden Central Station
- Clearfield Station
- Salt Lake Central Station

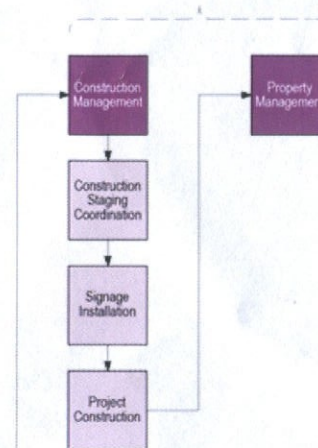
Planning



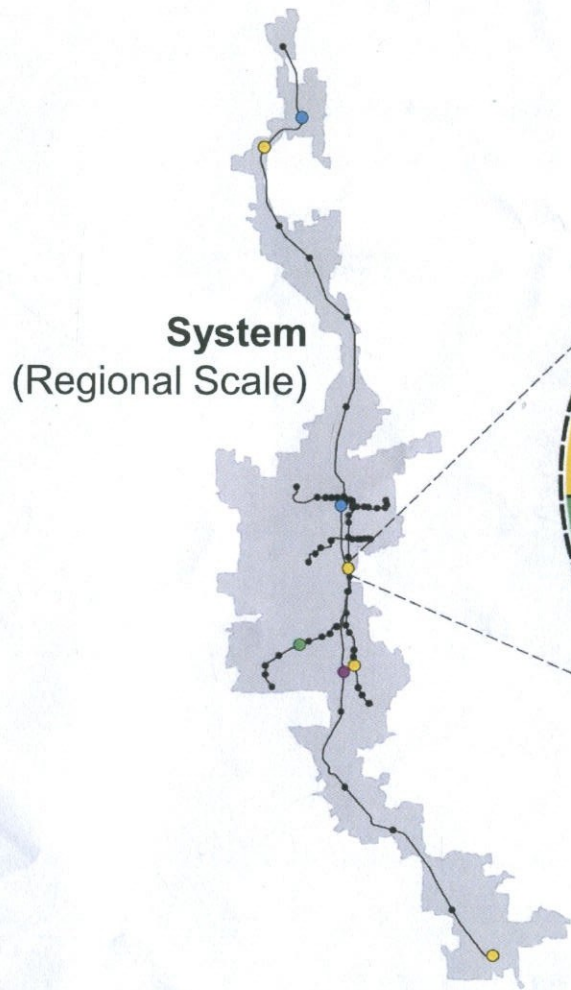
Implementation



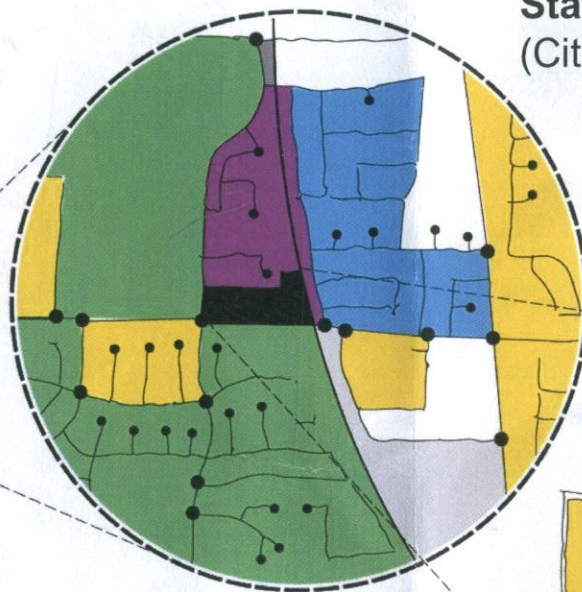
Management



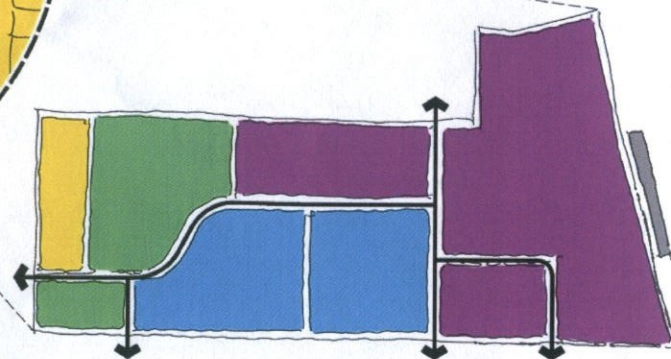
TOD Framework



System
(Regional Scale)



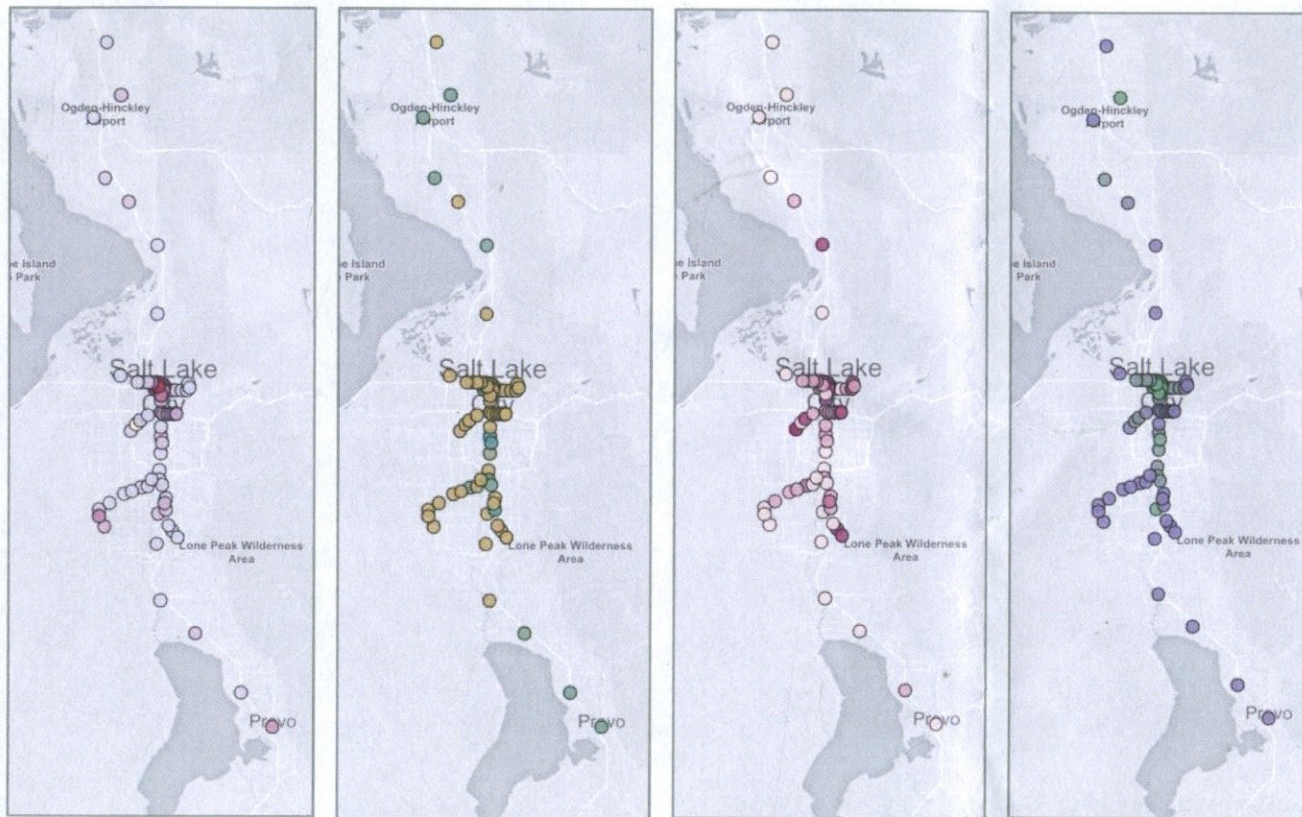
Station Area
(City Scale)



Concept Plan (Site Scale)

Three Scales of Planning

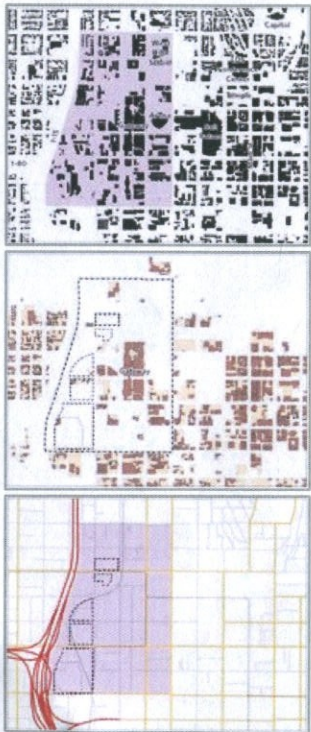
System Analysis



Four Categories

- Market Strength
- Accessibility
- Municipal Support
- Housing Affordability

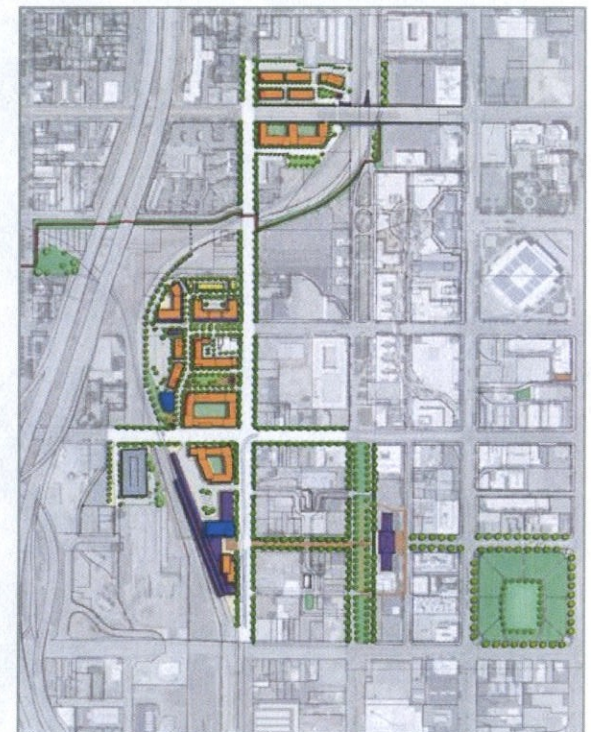
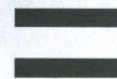
Station Area Planning



X Conditions



Community Engagement

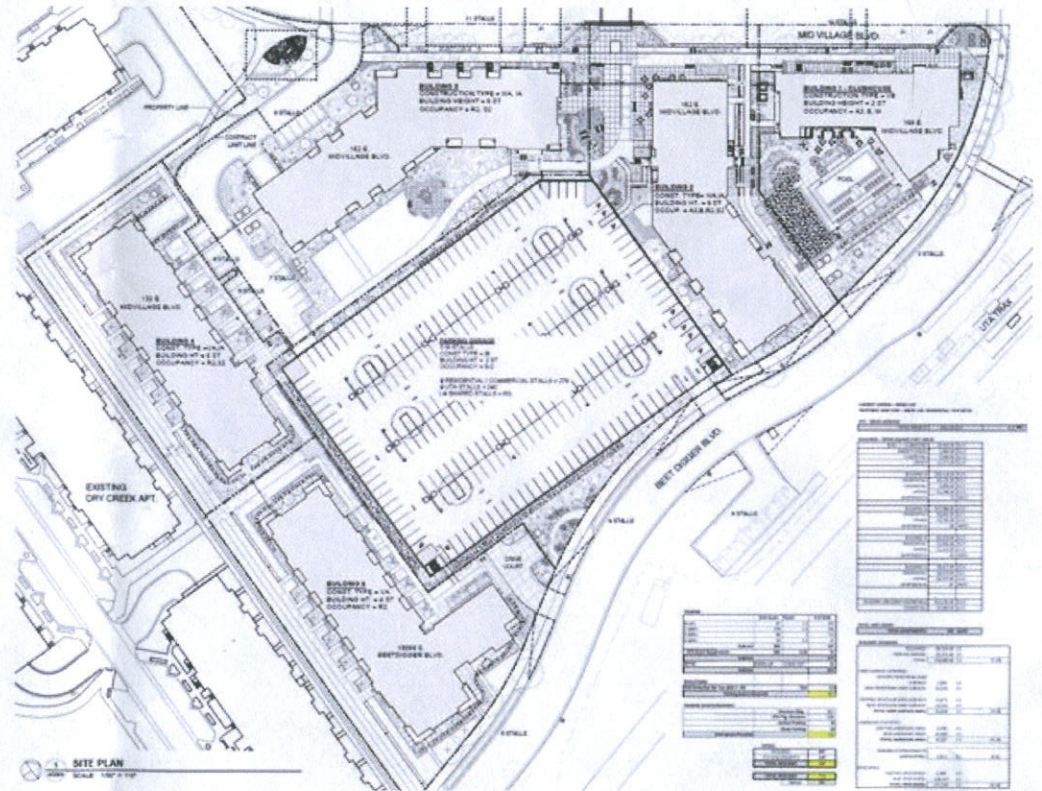


Concept

Project Implementation



Master Plan



Site Plan

Rank	Overall	Growth Opportunity	Affordable Housing
1	Salt Lake Central/ N Temple Station	West Jordan City Center	Ogden Central
2	Ogden Central	American Fork Station	Murray Central
3	Clearfield Station	Clearfield Station	Salt Lake Central/ N Temple Station
4	American Fork Station	Roy Station	Midvale Fort Union Station
5	Orem Central Station	Historic Sandy Station	Clearfield Station
6	Roy Station	Draper Town Center Station	1300 S Ballpark Station
7	Murray Central Station	5651 W Old Bingham Hwy (West Jordan)	West Jordan City Center Station
8	West Jordan City Center Station	Kimballs Lane Station (Draper)	Fashion Place West Station
9	Farmington Station	Lehi Station	Midvale Center Station
10	Midvale Fort Union Station	Fashion Place West Station	Roy Station