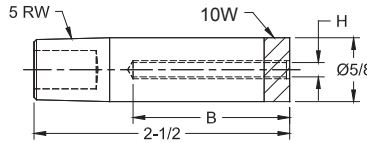


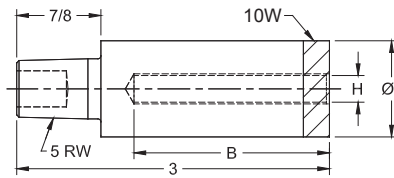
STUD WELDING ELECTRODES



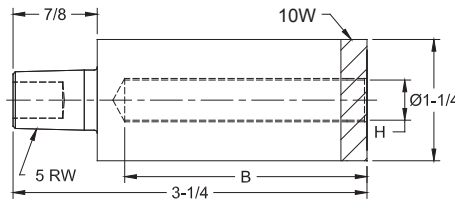
Assembled Electrode Part Number			Insulation I.D. H	Screw Thread Size
Depth B				
.375	.750	1.125	.116	#4
16-3724-1161	16-3724-1162	16-3724-1163		
16-3724-1321	16-3724-1322	16-3724-1323	.132	#5
.500	1.000	1.500	.140	#6
16-3724-1401	16-3724-1402	16-3724-1403		
16-3724-1501	16-3724-1502	16-3724-1503	.150	--
16-3724-1571	16-3724-1572	16-3724-1573	.157	--
16-3724-1691	16-3724-1692	16-3724-1693	.169	#8
.750	1.500	--	.191	#10
16-3724-1911	16-3724-1912			
16-3724-2201	16-3724-2202		.220	#12
16-3724-2541	16-3724-2542		.254	.250



Assembled Electrode Part Number		Insulation I.D. H	Screw Thread Size
Depth B			
.750	1.500	.254	.250
16-3725-2541	16-3725-2542		
1.000	2.000	.277	--
16-3725-2771	16-3725-2772		
16-3725-3171	16-3725-3172	.317 (8MM)	.312
16-3725-3391	16-3725-3392	.339	--
16-3725-3651	16-3725-3652	.365	--
16-3725-3801	16-3725-3802	.380	.375



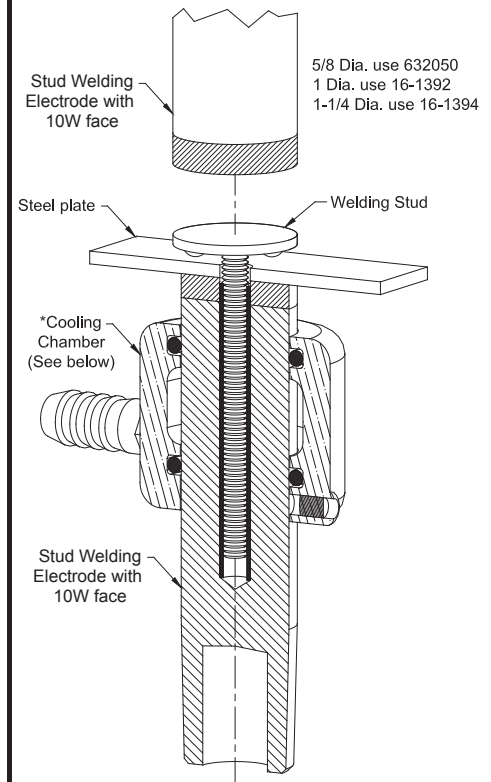
Assembled Electrode Part Number		Insulation I.D. H	Screw Thread Size
Depth B			
1.000	2.000	.401	--
16-3726-4011	16-3726-4012		
16-3726-4271	16-3726-4272	.427	--
16-3726-4441	16-3726-4442	.444	.437
16-3726-5021	16-3726-5022	.502	.500
1.000	2.000	.552	--
16-3726-5521	16-3726-5522		
16-3726-6301	16-3726-6302	.630	.625
16-3726-6761	16-3726-6762	.676	--
16-3726-8011	16-3726-8012	.801	--



FEATURES AND SPECIFICATIONS

- 10W faced RWMA CLASS 2 material
- Insulated sleeve made of anodized aluminum
- Insulated sleeve are treated to 55 HRC both I.D. & O.D. for wear resistance
- Use with tapered electrode holders
- Use with flat faced electrodes
- Accepts external Cooling Chambers

TYPICAL SET-UP FOR STUD WELDING



*For additional information on cooling chamber see page 27

Electrode Dia.	Cooling Chamber
5/8	18-1340
1	18-1342
1-1/4	18-1343