

POWERS' PICKS \$15

Volume 10 Issue 18

November 9th-14th, 2022

© 2022 BP Sports, LLC

CFB/NFL Best Bets are 46-31-2 This Year! CFB Wk 11 Best Bets Pg 3, NFL Wk 10 Best Bets Pg 7

Week 10 News and Notes!

For those of you that are new, in this section we'll recap what happened last week specifically, the misleading finals, the key injuries, the bad beats and the line moves. We'll include most of these recaps here, therefore you don't have to waste time reading about them in my game-by-game write-ups for the upcoming week. Without further adieu, here's a run down of what happened last week in the world of CFB.

Week 10 Trends

Favorites-Dogs

Straight Up
ATS

Home-Away

Straight Up
ATS

Totals (O/U)

Over-Under

Season To-Date

Favorites-Dogs

Straight Up
ATS

Home-Away

Straight Up
ATS

Totals (O/U)

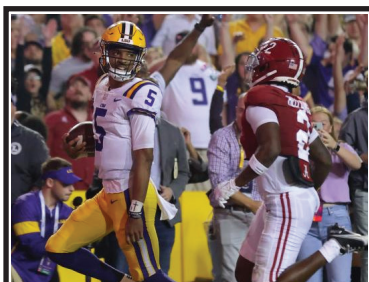
Over-Under

Largest Favorites to Cover:

Oregon (-31) at Colorado, 49-10
Fresno St (-27) vs Hawaii, 55-13
Michigan (-26) at Rutgers, 52-17

Biggest Money line Upsets:

Michigan St +550 won 23-15 at Illinois (+16)
Liberty +455 won 21-19 at Arkansas (+14.5)
LSU +395 won 32-31 in OT vs Alabama (+13)



QB Jayden Daniels and No. 10 LSU ran past No. 6 Alabama last Saturday night. The Tigers won in thrilling fashion going for two in OT and getting the 32-31 upset as 13-point underdogs.

ATS Notables

Best ATS teams with cover margin:

Tulane 8-1 +6.4 points per game
Kansas 7-1-1 +10.4
TCU 7-1-1 +7.0
Connecticut 8-2 +7.1
Tennessee 7-2 +8.8
Oregon St 7-2 +5.4
Oregon 7-2 +4.9
Troy 7-2 +2.9

Best OVER teams with margin:

Houston 8-1 +15.3 points per game
Louisiana Tech 8-1 +10.8
Rice 8-1 +8.9
Memphis 8-1 +7.2
Baylor 7-2 +8.5
USF 7-2 +8.0
Arkansas 7-2 +4.2
Northern Illinois 7-2 +4.0
UCLA 7-2 +3.4
Penn St 7-2 +3.3

Worst ATS teams with cover margin:

Miami, FL 1-8 -13.2 points per game
Boston College 2-7 -6.7
Stanford 2-7 -4.6
Colorado 2-7 -4.2

Best UNDER teams with margin:

Marshall 8-1 -11.1 points per game
Kentucky 8-1 -8.3
Missouri 8-1 -7.1
Colorado St 8-1 -5.9
Miami, OH 8-2 -8.4
Virginia 7-1-1 -13.1
Iowa St 7-2 -10.6
Washington St 7-2 -8.2
Georgia 7-2 -6.4
Utah st 7-2 -5.4
Florida Atlantic 7-2 -3.0
Connecticut 7-2-1 -7.2

Misleading Finals

-Louisiana Tech only had a 446-420 yard edge as they were +4 in TO's in the 40-24 win over Middle Tennessee.

-SMU was actually out-gained 710-642 in their 77-63 win over Houston. The Mustangs benefited from +3 in TO's.

-NC State was out-gained 414-325 in their 30-21 upset over Wake Forest. The Wolf Pack were +3 in TO's.

Bad Beats

-New Mexico (+14.5, we gave them out at +16.5) led Utah St 10-7 at halftime. They trailed 20-10 late fourth quarter but fumbled and Utah St returned it 55 yards for a TD to get the cover.

-UL-Lafayette (+3.5) led Troy 17-0 late 3Q. The game was tied 17-17 late 4Q. You would assume they were lining up for the game-winning FG but instead got a 22-yard TD run with :05 left to win 23-17.

-Hawaii got a TD with :35 left to put the game OVER the 62 total. During the drive they got a first down via penalty on fourth down.

-The total in the Alabama/LSU was 56.5. Midway through the fourth quarter, Alabama led 15-14. The two teams traded scores back and forth and headed to OT tied up at 24. Both teams scored TD's and LSU's TD put the game over the total.

Injuries/Personnel News

-Boston College QB Phil Jurkovec did not practice Tuesday. He is ? this week.

-Central Michigan TE Joel Wilson is out for the season.

-Coastal Carolina QB Grayson McCall will miss 3-6 weeks.

-Colorado leading WR Jordyn Tyson is out for the season.

-Indiana QB Conner Bazelak is expected to start this week.

-Maryland leading WR Rakim Jarrett is a game-time decision this week.

-Miami, FL QB Tyler Van Dyke is "in a better spot than he was a week ago".

-Minnesota QB Tanner Morgan is questionable this week.

-Nebraska QB Casey Thompson looks like he is doubtful for this week.

-North Texas RB Oscar Adaway is out this week.

-Pitt RB Israel Abanikanda is questionable this week.

-South Carolina RB MarShawn Lloyd was limited in Tuesday's practice.

-Stanford will be down to a converted safety playing RB for them this week in Mitch Leigher. Their top 3 RB's are all out.

-Syracuse QB Garrett Shrader is questionable this week.

-Texas A&M QB Conner Wigman has been cleared to practice.

-Texas St's 2nd-leading rusher RB Calvin Hill and leading WR Ashtyn Hawkins are out for the season.

-Texas Tech 2nd-leading WR Jerand Bradley is in concussion protocol this week.

-Texas Tech QB Behren Morton is out this week.

-Tulsa QB Davis Brin is questionable this week.

-UCF QB John Rhys Plumlee is questionable this week. We actually prefer the backup Mikey Keene (last year's starter).

-UCLA RB Zach Charbonnet was practicing on Tuesday.

-UL-Lafayette QB Ben Wooldridge is healthy enough to start Thursday.

-USC WR's Mario Williams and Jordan Addison have not yet practiced fully.

-USF has fired head coach Jeff Scott.

-UTSA starting WR De'Corian Clark is out for the season.

-Vanderbilt QB AJ Swann is out this week.

-Virginia's Top 3 WR's Dontayvion Wicks, Keytaon Thompson and Lavel Davis were all limited in Monday's practice.

Recapping Week 10 Best Bets

Not a great week. We went 2-3 in college with New Mexico and Texas Tech blowing big covers in the 4Q that ruined our whole weekend. NFL went 1-2-1. Keep in mind, this is a marathon, not a sprint!

2022 Combined Nationwide Football Newsletter Contest (Regular Season Only)

We are happy to provide you with the records, standings and plays used from the Power Sweep (2-4★ & Underdog), Gold Sheet (Key Releases), Power Plays (1-4.5★), Sports Reporter (Best Bets & Recommended), Winning Points (Best Bets & Preferred), Playbook (3-5★'s and Upset POW), Pointwise (Ratings 1-5) and Powers' Picks (1-4★'s)

College Newsletter	W	L	T	%	Net
Powers' Picks	28	18	1	60.87%	10
Gold Sheet	24	18	0	57.14%	6
Winning Points	34	26	1	56.67%	8
Sports Reporter	41	34	1	54.67%	7
Playbook	21	20	0	51.22%	1
Power Plays	69	72	2	48.94%	-3
Power Sweep	28	32	1	46.67%	-4
Pointwise	36	43	2	45.57%	-7
Combined	281	263	8	51.65%	18

NFL Newsletter	W	L	T	%	Net
Powers' Picks	18	13	1	58.06%	5
Pointwise	23	18	2	56.10%	5
Power Plays	22	19	1	53.66%	3
Sports Reporter	17	15	2	53.13%	2
Winning Points	18	16	2	52.94%	2
Gold Sheet	15	15	1	50.00%	0
Playbook	13	13	1	50.00%	0
Power Sweep	26	27	1	49.06%	-1
Combined	152	136	11	52.78%	16

College/NFL Combined Newsletter	W	L	T	%	Net
Powers' Picks	46	31	2	59.74%	15
Winning Points	52	42	3	55.32%	10
Sports Reporter	58	49	3	54.21%	9
Gold Sheet	39	33	1	54.17%	6
Playbook	34	33	1	50.75%	1
Power Plays	91	91	3	50.00%	0
Pointwise	59	61	4	49.17%	-2
Power Sweep	54	59	2	47.79%	-5
Combined	433	399	19	52.04%	34

CFB and NFL Schedules with Vegas and Brad Powers Lines Week 11 November 9th-14th

Wednesday, Nov 9th	Time/TV	Open	Current	BP	Notes
107 Northern Illinois	7:00	49.5	-1	-2	
108 Western Michigan	ESPN	PK	49.5	50	
109 Buffalo	7:00	55.5	53	54	
110 Central Michigan	ESPN2	PK	-2.5	-2	
111 Kent St	7:00	-4	-2	-1	
112 Bowling Green	CBSSN	54.5	55.5	57	
Thursday, Nov 10th	Time/TV	Open	Current	BP	Notes
113 Atlanta	8:15	-1.5	-3	-2	
114 Carolina	Prime	40.5	42.5	42	
115 Tulsa	7:30	57.5	61.5	63	
116 Memphis	ESPN	-6	-6.5	-7	
117 Georgia Southern	7:30	60.5	61.5	58	
118 UL-Lafayette	ESPN	-3	-3	-4	
Friday, Nov 11th	Time/TV	Open	Current	BP	Notes
119 East Carolina	8:00	47.5	52.5	53	
120 Cincinnati	ESPN2	-6	-5	-7	
121 Colorado	9:30	64.5	66	63	
122 USC	FS1	-34	-34	-34	
123 Fresno St	10:30	-11	-9.5	-8	
124 UNLV	CBSSN	59.5	60.5	56	
Saturday, Nov 12th	Time/TV	Open	Current	BP	Notes
125 North Carolina	7:30	78.5	77	72	
126 Wake Forest	ESPN2	-3	-3.5	-4	
127 Florida St	8:00	-6	-6.5	-9	
128 Syracuse	ACCN	52.5	51	51	
129 Liberty	12:00	-15	-14.5	-16	
130 Connecticut	CBSSN	52.5	45	46	
131 Virginia Tech	12:00	49.5	49.5	52	
132 Duke	ESPN3	-10	-9.5	-8	
133 Notre Dame	12:00	-19	-15.5	-15	
134 † Navy	ABC	42.5	39.5	45	
135 Oklahoma	12:00	-9	-8	-6	
136 West Virginia	FS1	64.5	67	64	
137 Pittsburgh	12:00	-6	-4.5	-7	
138 Virginia	ACCN	40.5	40	45	
139 Indiana	12:00	54.5	58.5	59	
140 Ohio St	FOX	-38	-40	-39	
141 Missouri	12:00	62.5	57	56	
142 Tennessee	CBS	-20	-20.5	-20	
143 Maryland	3:30	54.5	59	57	
144 Penn St	FOX	-12	-10	-11	
145 Boston College	3:30	42.5	41	47	
146 NC State	ACCN	-17	-19	-19	
147 South Carolina	4:00	56.5	59	58	
148 Florida	SECN	-9	-7.5	-8	
149 Vanderbilt	12:00	45.5	47.5	51	
150 Kentucky	SECN	-17	-18	-19	
151 Nebraska	3:30	49.5	48.5	54	
152 Michigan	ABC	-29	-29.5	-28	
153 Miami, FL	3:30	45.5	44	-1	
154 Georgia Tech	ESPN3	-3	-1.5	47	
155 Louisville	3:30	53.5	52	52	
156 Clemson	ESPN	-8	-7	-8	
157 Kansas	7:00	64.5	64	64	
158 Texas Tech	ESPN+	-5	-3.5	-4	
159 SMU	12:00	-18	-17.5	-17	
160 South Florida	ESPN	67.5	72.5	71	
161 Southern Miss	7:30	54.5	49	49	
162 Coastal Carolina	ESPN	-14	-5.5	-5	
163 UL-Monroe	1:00	58.5	58.5	58	
164 Georgia St	ESPN+	-13	-13.5	-12	
165 Appalachian St	3:30	-1	-1	-1	
166 Marshall	ESPN+	43.5	47.5	47	
167 James Madison	1:00	-7	-7.5	-8	
168 Old Dominion	ESPN+	50.5	46.5	48	
169 UCF	3:30	47.5	54.5	-1	
170 Tulane	ESPN2	PK	-1.5	53	
171 Northwestern	3:30	36.5	40.5	43	
172 Minnesota	BTN	-16	-17.5	-17	
173 Purdue	12:00	45.5	44.5	46	
174 Illinois	ESPN2	-4	-6.5	-6	
175 Texas St	5:00	48.5	47.5	50	
176 South Alabama	ESPN+	-16	-16.5	-16	
177 Rutgers	12:00	36.5	40.5	46	
178 Michigan St	BTN	-11	-10	-8	
179 Temple	3:00	54.5	56.5	58	
180 Houston	ESPN+	-21	-20	-18	

Saturday, Nov 12th	Time/TV	Open	Current	BP	Notes
181 Kansas St	7:00	52.5	53.5	55	
182 Baylor	FS1	-5	-2.5	-3	
183 Massachusetts	3:00	49.5	49.5	49	
184 Arkansas St	ESPN+	-18	-17.5	-17	
185 Rice	2:00	57.5	61	63	
186 Western Kentucky	ESPN+	-15	-13	-13	
187 Stanford	10:00	47.5	53.5	54	
188 Utah	ESPN	-23	-24	-22	
189 Arizona St	3:30	59.5	60	57	
190 Washington St	P12N	-9	-8	-9	
191 California	9:00	48.5	49	53	
192 Oregon St	P12N	-11	-14	-13	
193 Washington	7:00	70.5	72.5	73	
194 Oregon	FOX	-12	-13.5	-13	
195 Arizona	10:30	74.5	77.5	77	
196 UCLA	FOX	-19	-19.5	-17	
197 San Jose St	10:30	41.5	-2.5	-2	
198 San Diego St	FS1	-2	41.5	42	
199 TCU	7:30	66.5	65	67	
200 Texas	ABC	-7	-7	-7	
201 Texas A&M	7:30	-2	48.5	51	
202 Auburn	SECN	45.5	-1.5	-1	
203 Army	3:30	44.5	46	47	
204 Troy	NFL Net	-8	-9	-9	
205 Alabama	3:30	-12	-12	-10	
206 Ole Miss	CBS	66.5	63.5	62	
207 Iowa St	3:30	-1	-1.5	-1	
208 Oklahoma St	ESPN	44.5	48.5	51	
209 Wisconsin	3:30	-2	-1.5	-1	
210 Iowa	FS1	33.5	35	37	
211 LSU	12:00	-2	-3	-2	
212 Arkansas	ESPN	65.5	63	60	
213 Georgia	7:00	-16	-16.5	-16	
214 Mississippi St	ESPN	50.5	53.5	54	
215 New Mexico	3:30	36.5	37.5	40	
216 Air Force	CBSSN	-24	-21.5	-20	
217 Charlotte	3:30	64.5	67	66	
218 Middle Tennessee	ESPN3	-9	-10.5	-12	
219 North Texas	3:30	57.5	58	57	
220 UAB		-7	-6	-5	
221 Louisiana Tech	3:30	65.5	68	67	
222 UTSA	ESPN+	-20	-18.5	-17	
223 Wyoming	7:00	-9	-8.5	-9	
224 Colorado St	CBSSN	41.5	42	43	
225 Florida Atlantic	7:00	-16	-15.5	-15	
226 FIU		57.5	54.5	55	
227 Boise St	10:30	-21	-21	-21	
228 Nevada	CBSSN	47.5	47	49	
229 Utah St	11:00	-11	-11.5	-13	
230 Hawaii		57.5	52.5	49	
Sunday, Nov 13th	Time/TV	Open	Current	BP	Notes
241 Seattle	9:30a	46.5	44.5	44	
242 † Tampa Bay	NFL Net	-2	-3	-2	
243 Jacksonville	1:00	49	50.5	50	
244 Kansas City	CBS	-9.5	-9.5	-10	
245 Houston	1:00	38	41	42	
246 N.Y. Giants	CBS	-5.5	-5	-6	
247 New Orleans	1:00	-2	-2.5	-1	
248 Pittsburgh	FOX	41.5	40.5	41	
249 Detroit	1:00	45.5	48.5	48	
250 Chicago	FOX	-1.5	-3	-6	
251 Cleveland	1:00	46.5	48.5	50	
252 Miami	CBS	-5.5	-3.5	-4	
253 Minnesota	1:00	49.5	44	42	
254 Buffalo	FOX	-9.5	-4	-4	
255 Denver	1:00	40.5	38	38	
256 Tennessee	CBS	-1	-2.5	-2	
257 Indianapolis	4:05	43	42.5	41	
258 Las Vegas	CBS	-3.5	-6	-7	
259 Arizona	4:25	45	43	44	
260 L.A. Rams	FOX	-3	-3	-4	
261 Dallas	4:25	-3	-5	-5	
262 Green Bay	FOX	44.5	43	41	
263 L.A. Chargers	8:20	47.5	45.5	47	
264 San Francisco	NBC	-3.5	-7	-7	
Monday, Nov 14th	Time/TV	Open	Current	BP	Notes
265 Washington	8:15	45	44	43	
266 Philadelphia	ESPN	-10	-11	-9	

4★ = BEST
3★ = BETTER
2★ = GOOD
1★ = FAIR

THE POWERS' PACK

- 3★ Florida St (-6.5) over SYRACUSE
- 2★ Central Florida (+1.5) over TULANE
- 2★ Rutgers (+10) over MICHIGAN ST
- 2★ Louisiana Tech (+18.5) over UTSA
- 2★ New Mexico (+21.5) over AIR FORCE

Games in Rotation Order

Wednesday, November 9th

Northern Illinois 26 WESTERN MICHIGAN 24. Both teams are like a box of chocolates when it comes to starting QB's. You never know who is going to start until right before kickoff. Almost makes this game un-bettable but we lean NIU.

CENTRAL MICHIGAN 28 Buffalo 26. Early money has come in on CMU and we agree. Chips are +0.03 in ypp (No. 82) while the Bulls are -1.18 (No. 120) and CMU has played the slightly tougher schedule.

Kent St 29 BOWLING GREEN 28. With a win, BG could clinch bowl eligibility for the first time in seven years. Kent St is the better team statistically and has played the tougher schedule. However, the Golden Flashes have failed to cover the spread in 5 straight games.

Thursday, November 10th

MEMPHIS 35 Tulsa 28. Does Tulsa QB Davis Brin play here? The two teams are even statistically but Tulsa had a season-low 257 yards and 13 points without Brin last week. Plus it's a short week and they're traveling. Lean Memphis. Totals' players note Memphis games are 8-1 to the OVER.

UL-LAFAYETTE 31 Georgia Southern 27. It looks like ULL QB Wooldridge will be ready to go here. ULL suffered one of the worst bad beats of the entire season last week in their loss to Troy (see page 1). They have a better ypp but GS has played the tougher schedule. We didn't get involved.

Friday, November 11th

CINCINNATI 30 East Carolina 23. Cincy does have the edge in ypp at +1.96 (No. 7) vs ECU's +0.74 (No. 40). ECU comes in off a bye while Cincy has failed to cover in 4 straight. Cincy has the much better defense ranking No. 4 in ypp allowed while ECU ranks No. 97. That's the difference for us.

USC 49 Colorado 15. Obviously, USC's offense that ranks No. 5 in ypp should have a field day vs a Colorado defense that allows 6.9 yards per play (No. 129). The problem is can you trust a USC defense that ranks No. 102 in ypg allowed and No. 99 in ypp allowed to not allow the back-door?

Fresno St 32 UNLV 24. Both teams have recently welcomed back their starting QB's and both covered the spread last week. We lean UNLV who needs to win two of their final 3 to get to bowl eligibility for only the 2nd time in 20 years.

Saturday, November 12th

WAKE FOREST 38 North Carolina 34. The last two years the teams have combined for 113 and 112 points and both featured big NC comeback wins after trailing by 18 and 21 points. If NC QB Drake Maye played in the SEC or Big Ten, he'd arguably be the Heisman favorite with a 31-3 TD-to-INT ratio and 513 rushing yards. NC is 5-0 in close games while Wake is -10 in TO's the last two weeks. We lean UNDER on one of the highest totals of the season.

3★ Florida St 30 SYRACUSE 21. We've been saying it for a few weeks now but we feel FSU is underrated and a border-line Top 10 team. The Noles are now No. 5 in the country in ypp margin. Meanwhile, Syracuse has lost 3 straight, are banged up and QB Shrader remains questionable.

LIBERTY 31 Connecticut 15. Obviously, it's a flat spot for Liberty off the big upset win over Arkansas last week. Meanwhile, UConn is sitting at 5 wins needing just one more for a shocking bowl bid. However, while the Huskies have covered 6 straight games and gone 4-1 SU their last 5, they've been outgained in each of their last 4 games.

DUKE 30 Virginia Tech 22. Every week, we appear to be much lower than the market on Duke even though we've upgraded them more than any team in the country. This week is no different. The Blue Devils do have massive edges in the stats but we lean VT especially at "+10".

† **Notre Dame 30 Navy 15.** @M&T Bank Stadium in Baltimore, MD. Clemson wasn't the only one to get their ass kicked by ND last week as we unfortunately backed the Tigers on these pages. Sure ND scored a couple of non-offensive TD's but the Irish dominated the line of scrimmage. However, Marcus Freeman and Co. have really struggled as double-digit favorites this year going 0-4 ATS and losing two outright. Lean OVER.

Oklahoma 35 WEST VIRGINIA 29. How warm is Neal Brown's seat getting in Morgantown? Obviously, Oklahoma is much better in ypp thanks to their offense. However, do you really trust that Oklahoma defense that allows 435 ypg (No. 110) at anything above a TD?

Pittsburgh 26 VIRGINIA 19. Pitt is the better team in ypp margin, ypp margin and ppg margin. Also Virginia is dealing with some cluster injuries as their top 3 WR's all missed practice early this week (check status). We like Pitt and also the OVER. Yes, we know that Virginia games are 7-1-1 to the UNDER this year by 13 ppg but this is their lowest totals' line by more than a TD and it's also Pitt's lowest total.

OHIO ST 49 Indiana 10. Obviously, the wind really hurt the Buckeyes last week in their lack-luster 21-7 win over Northwestern. They still rank No. 1 in the country in ypp margin at +3.01 (Indiana No. 110) and they still have the No. 1 scoring offense at 45.8. If given the chance, they will look to atone for that performance and that's why we bet OVER.

TENNESSEE 38 Missouri 18. How does Tennessee respond after the loss to Georgia? The Vols were dominated much worse than the final. If there's a silver lining, it's that they only dropped to No. 5 in the CFB playoff rankings Tuesday and still have a decent path to the playoffs. This Missouri defense is legit though as they rank No. 13 in ypg and No. 17 in ypp. It's a big reason the UNDER is 8-1 in their games.

HOME TEAM IN CAPS

PENN ST 34 Maryland 23. Maryland might be a little underrated as they played some of the Indiana game and all of the Northwestern game without their starting QB and then when Tagovailoa returned last week, he was ineffective due to the weather. However, Penn St's two losses are to the No. 2 and No. 3 teams.

NC State 33 Boston College 14. BC got a cover last week as backup QB Morehead shook off some early jitters and threw for 330 yards in his first start. Starting QB Jurkovec didn't practice as of Tuesday. Meanwhile, NC State got a big win over Wake as frosh QB MJ Morris now has a 6-0 TD-to-INT ratio. Lean OVER.

FLORIDA 33 South Carolina 25. We know it came against a Texas A&M team that was dealing with a flu bug, but that was a big win last week for first year Florida coach Billy Napier. Meanwhile, SC got to bowl eligibility. This is a lay 7, take 10 type of game and we don't see much value at the current numbers.

KENTUCKY 35 Vanderbilt 16. Vandy is improved this year but they still rank No. 124 in ypp margin, No. 127 in ypg margin and No. 118 in ppg margin. Will be interesting to see if Kentucky can get margin with their struggling offense. Vandy's No. 125 D is just what the doctor ordered.

MICHIGAN 41 Nebraska 13. While their strength of schedule (No. 71) can be questioned, Michigan ranks No. 1 in ppg margin, No. 2 in ypg margin and No. 3 in ypp margin. Nebraska is likely playing with a backup QB again here. We like the OVER as Harbaugh is not afraid to play bulky.

Miami, FL 24 GEORGIA TECH 23. It's been a disastrous first season for Mario Cristobal. The Hurricanes have failed to cover 8 straight games by 15.8 ppg and were destroyed by rival Florida St last week. With that being said, they have better ypp, ypg and ppg margins than GT and we bet Miami +3 on Sunday.

CLEMSON 30 Louisville 22. How does Clemson respond after getting physically dominated by ND last week? Their National Title hopes are likely over but they still have their 38-game home win streak. Meanwhile, Louisville has won and covered 4 straight and are better in ypp margin. We didn't bet this one.

TEXAS TECH 34 Kansas 30. Texas Tech lets us down on these pages last week as they led TCU 17-13 in the fourth quarter but lost 34-24 as 9.5-point underdogs. Losing QB Morton hurt and he will miss here. Kansas is bowl eligible for the first time since 2008. The Jayhawks rank No. 13 in ypp margin and have taken some early week money. We originally bet Texas Tech on Sunday thinking Morton could return.

Smu 44 SOUTH FLORIDA 27. USF fired head coach after a horrific 4-26 record culminating with a blowout loss to Temple last week. ST's coach Daniel Da Prato is the interim. SMU's offense fresh off posting 77 points vs Houston should be licking their chops vs a USF defense allowing 533 ypg (No. 130) and 7.3 ypp (No. 130).

COASTAL CAROLINA 27 Southern Miss 22. Coastal QB McCall is out 3-6 weeks due to injury. He was banged up in their big win over Appalachian St last Thursday. Meanwhile, Southern Miss is off their worst performance of the season. We're passing with the McCall news breaking Wednesday morning.

GEORGIA ST 35 UL-Monroe 23. Georgia St has won and covered four of their last 5 after an 0-4 start. They are averaging nearly 300 rush ypg during that stretch. ULM is off a come-from-behind win vs Texas St. Lean ULM at +14 or more.

Appalachian St 24 MARSHALL 23. Both teams have disappointed this season despite having good stats. Both are in the top 20 in ypp margin and are in the Top 40 in ypp. Yet, both are sitting at 5-4. We haven't bet side or total.

James Madison 28 OLD DOMINION 20. After their hot start, JMU has lost 3 straight and predictably starting to wear down to an increased strength of schedule in their first year of FBS play. ODU has also lost 3 straight and the Monarchs are No. 120 in ypg margin (JMU No. 14). We lean OVER at the current numbers.

2★ Central Florida 27 TULANE 26. The winner is likely heading to the AAC Championship. UCF is better in ypp margin (No. 17 vs No. 20), ypg margin (No. 8 vs No. 21) and ppg margin (No. 7 vs No. 11). That's playing a tougher schedule too (No. 68 vs No. 96). We don't think Mikey Keene is a downgrade from John Rhys Plumlee as we could see both QB's. Therefore, we see value here on UCF even though Tulane is 8-1 ATS on the season.

MINNESOTA 30 Northwestern 13. Obviously, Northwestern got help from the windy weather last week in keeping that game vs Ohio St close. We have huge disparities in ypp margin (Minnesota No. 23 vs NW No. 118), ypg margin (No. 10 vs No. 97) and ppg margin (No. 9 vs No. 122). Lean OVER.

ILLINOIS 26 Purdue 20. Illinois suffered a shocking upset loss to Michigan St last week. Offensive inefficiency did them in as they had 4 trips inside MSU's 40-yard line result in zero points. Purdue is also off a disappointing upset loss to Iowa as the windy weather impacted their pass offense more than the ground-oriented Hawkeyes. We didn't bet side or total.

SOUTH ALABAMA 33 Texas St 17. We wonder if Texas St head coach Spavital's seat is starting to warm after blowing a 21-0 lead last week. South Alabama is No. 11 in the country in ypg margin and No. 23 in ypp. They win comfortably.

2★ Rutgers (plus the points) MICHIGAN ST 27 Rutgers 19. For being a 10-point underdog, Rutgers does have a better ypp margin and ypg margin. The market may be over-reacting a bit to Michigan St's upset win over Illinois as the Spartans were still outgained by 147 yards. We like Rutgers and the OVER here.

HOUSTON 38 Temple 20. Temple is fresh off their blowout win over USF where they put up their most yards and points since 2019. Speaking of yards and points, Houston somehow lost a game by double-digits while posting 710 yards and 63 points as they played the highest scoring game (in regulation) in FBS history. Tough trusting that defense here.

BAYLOR 29 Kansas St 26. A pretty good match-up here as the early money has come in on Kansas St. The Wildcats do have the better ypp margin (No. 25 vs No. 33) despite playing a tougher schedule (No. 8 vs No. 35). We bet them +5 on Sunday but can't now that it has crossed through the key "3".

ARKANSAS ST 33 Massachusetts 16. Arkansas St comes in off the much-needed bye after playing 9 straight weeks and were banged up. UMass is the worst team in the FBS but do you really want to lay a big number here with a Arkansas St team that ranks No. 121 in ypp margin?

WESTERN KENTUCKY 38 Rice 25. Rice games are 8-1 to the OVER this year by 8.9 ppg. Meanwhile, WKU is better than their 6-4 record ranking No. 12 in ypp margin, No. 22 in ypg margin and No. 15 in ppg margin.

Pics of Brad's Bets vs Circa Openers

UTAH 38 Stanford 16. Stanford could be playing with a converted safety at RB for this one. The Cardinal are just 2-7 ATS on the season and rank No. 117 in ypp margin. Utah should have their way similar to what they did vs Arizona last week. We bet OVER 47.5 but don't see value now.

WASHINGTON ST 33 Arizona St 24. The Sun Devils have become more offense-oriented under their interim coach but will get tested here. Washington St has leaned on their defense on all year as their games are 7-2 to the UNDER.

OREGON ST 33 California 20. Both come in off close losses (but covers) last week. Cal's defense has been surprisingly bad this year ranking No. 106 in ypg allowed and No. 105 in ypp allowed. Meanwhile, Oregon St's scoring was limited last week in windy weather vs Washington. We bet OVER 48.5.

OREGON 43 Washington 30. Oregon has covered 5 straight games while Washington has failed to cover 5 straight. We think Washington is relying too much on Michael Penix lately averaging 50 pass attempts per game the last 5 (first 4 38.5). Meanwhile they're averaging just 96 rush ypg the last 5. Since the opener, Oregon is averaging 48 ppg and 547 ypg. Not much value here.

UCLA 47 Arizona 30. A long with the NC/Wake game, this is the highest total of the season. UCLA's No. 3 offense in ypp should have a field day vs an Arizona defense allowing 6.9 ypp (No. 128). However, we can't trust that UCLA defense allowing 441 ypg the last 4 weeks.

San Jose St 22 SAN DIEGO ST 20. San Jose St has flipped to favorite here and it is deserved considering they have the ypp margin edge (No. 46 vs No. 102), the ypg margin edge (No. 46 vs No. 108) and ppg margin edge (No. 32 vs No. 82).

TEXAS 37 Tcu 30. We're guessing 15-20 years ago, you wouldn't have the No. 4 team in the country getting a TD to a 3-loss team. However, the market is sharper and it is deserved considering TCU has faced four backup QB's in the second half of games this year due to injury. Keep an eye on TCU WR Johnston who was banged up last week. We were expecting to bet Texas here but it's a sharp line..

AUBURN 26 Texas A&M 25. Auburn has flipped to favorite here as there is a lot of excitement around their interim coach Cadillac Williams. A&M has been a total mess this season but even with 15 players out with the flu last week, we didn't think they quit vs Florida.

TROY 28 Army 19. We think Troy's rush defense that has allowed just 113 ypg and 3.3 ypc should fare well here vs Army's option. The one concern we have is that Troy was extremely fortunate last week in rallying from a 17-0 late 3Q deficit.

Alabama 36 OLE MISS 26. Alabama has covered 8 straight games after a loss but this is the first time since 2010 that they are out of the National Title picture prior to the regular season finale. We honestly have no idea how they will respond after yet another poor performance away from home. Meanwhile, Ole Miss is off the bye.

Iowa St 26 OKLAHOMA ST 25. Obviously, Oklahoma St is A really banged up team and last week played without Spencer Sanders and lost by 21 to Kansas. That's coming on the heels of losing by 48 to Kansas St. They won't get crushed here but we can't bet on them until knowing Sanders' status.

Wisconsin 19 IOWA 18. Both teams benefited from the elements last week in wins over pass-happy teams. We're guessing Jim Leonhard gets the permanent gig if Wisconsin continues to play well. Iowa is No. 1 in the country in ypp allowed but this total w thought opened a little too low at 33.5.

Lsu 31 ARKANSAS 29. This is a clear-cut "Buy Low, Sell High" handicap. You have LSU off the thrilling OT upset win over Alabama taking on an Arkansas team off an upset loss to Liberty. Stats do favor LSU (No. 50 vs No. 81 in ypp margin) but we'll take the home dog at "+3" or more.

Georgia 35 MISSISSIPPI ST 19. On one hand, you can understand that this might be a flat spot for Georgia off the big Tennessee win but the reality is smart coaches like Chris Petersen and Nick Saban have Mike Leach's offense figured out pretty quickly and we think Kirby Smart will have similar success.

2★ New Mexico (plus the points) AIR FORCE 30 New Mexico 10. New Mexico is better than their final scores have indicated. They suffered a 21-yard Pick 6 with :28 left vs UNLV and lost by 11 (led 17-0 in 2Q). They suffered a 38-yard Pick 6 with 1:09 left vs Wyoming and lost by 13 (led 14-7 at halftime). Last week, they suffered a 55-yard fumble return TD with 3 minutes left vs Utah St and lost by 17 when they led 10-7 at halftime. That creates value.

MIDDLE TENNESSEE 39 Charlotte 27. Charlotte has been a "Jekyll and Hyde" team under their interim covering by 48 points and failing to cover by 37.5. We think MT is the right side but their QB was banged up a bit last week.

UAB 31 North Texas 26. UAB has had a "tough-luck" season as they are 0-5 in games decided by 7 points or less and have won their other 4 games by an average of 28.5 ppg. They still rank No. 10 in ypp margin and No. 23 in ypg margin. Meanwhile, North Texas comes in having covered 6 straight games by 16 ppg. We don't see value on the side or total.

2★ La Tech (plus the points) UTSA 42 Louisiana Tech 25. UTSA is off the big OT win over UAB while LT saw the return of QB Parker McNeill in their win over Middle Tennessee. We think LT is perfectly capable of the back-door capable of the back-door vs a UTSA defense that ranks No. 109 in ypg allowed and No. 107 in ypp allowed.

Wyoming 26 COLORADO ST 17. Wyoming is off a bye. The Cowboys have exceeded expectations as they've already reached bowl eligibility. Colorado St has been brutal offensively at No. 130 in scoring.

Florida Atlantic 35 FIU 20. The Shula has seen FAU win and cover 5 in a row. Average win by 29.8 ppg and an average cover of 21.4 ppg. Does that change with new FIU HC Mike MacIntyre?

Boise St 35 NEVADA 14. Boise comes in off the upset loss to BYU while Nevada is off a bye. Obviously, Boise has huge stat edges including ypp margin (No. 36 vs No. 123). We didn't bet side or total.

Utah St 31 HAWAII 18. We bet Utah St -9 and UNDER 56 and we still think there is some value at the current lines. Utah St's defense is the best unit and they did get back QB Legas in their last game.

Tuesday, November 15th

Bowling Green at Toledo. As of press-time, we don't know the results of BG's game vs Kent St. We expect Toledo to be around a 2-TD favorite.

Ohio at Ball St. Ohio has now covered 6 straight games while Ball St covered in a 4 loss to Toledo on Tuesday. We expect Ohio to be at least a FG favorite here.

68 pending, total cost \$30,910.00			
Sports Bet			
Placed Nov 6, 11:01 AM	\$550.00		
Nov-12 NCAA FOOTBALL POWER 5			
[126] WAKE FOREST UN 78%-110			
Sports Bet			
Placed Nov 6, 11:01 AM	\$550.00		
Nov-11 NCAA FOOTBALL POWER 5			
[124] UNLV UN 59%-110			
Sports Bet			
Placed Nov 6, 11:01 AM	\$550.00		
Nov-12 NCAA FOOTBALL POWER 5			
[124] UNLV +10-110			
Sports Bet			
Placed Nov 6, 11:01 AM	\$550.00		
Nov-11 NCAA FOOTBALL GROUP OF 5			
[119] E CAROLINA OV 47%-110			
Sports Bet			
Placed Nov 6, 11:01 AM	\$550.00		
Nov-10 NCAA FOOTBALL GROUP OF 5			
[116] MEMPHIS -6-110			
Sports Bet			
Placed Nov 6, 11:00 AM	\$550.00		
Nov-9 NCAA FOOTBALL GROUP OF 5			
[111] KENT ST OV 54%-110			
Sports Bet			
Placed Nov 6, 11:00 AM	\$550.00		
Nov-9 NCAA FOOTBALL GROUP OF 5			
[112] BOWLING GRN +3-110			
Sports Bet			
Placed Nov 6, 11:00 AM	\$550.00		
Nov-8 NCAA FOOTBALL GROUP OF 5			
[105] BALL ST OV 52%-110			
Sports Bet			
Placed Nov 6, 11:05 AM	\$550.00		
Nov-12 NCAA FOOTBALL GROUP OF 5			
[161] SO MISS +12%-110			
Sports Bet			
Placed Nov 6, 11:05 AM	\$550.00		
Nov-12 NCAA FOOTBALL POWER 5			
[158] TEXAS TECH -5-110			
Sports Bet			
Placed Nov 6, 11:05 AM	\$550.00		
Nov-12 NCAA FOOTBALL POWER 5			
[152] MIAMI FL +3-110			
Sports Bet			
Placed Nov 6, 11:04 AM	\$550.00		
Nov-12 NCAA FOOTBALL POWER 5			
[151] NEBRASKA OV 49%-110			
Sports Bet			
Placed Nov 6, 11:04 AM	\$550.00		
Nov-12 NCAA FOOTBALL POWER 5			
[149] VANDERBILT OV 45%-110			
Sports Bet			
Placed Nov 6, 11:04 AM	\$550.00		
Nov-12 NCAA FOOTBALL POWER 5			
[145] BOSTON COLL OV 41%-110			
Sports Bet			
Placed Nov 6, 11:03 AM	\$550.00		
Nov-12 NCAA FOOTBALL POWER 5			
[139] INDIANA OV 56-110			
Sports Bet			
Placed Nov 6, 11:03 AM	\$550.00		
Nov-12 NCAA FOOTBALL POWER 5			
[137] PITTSBURGH -4-110			
Sports Bet			
Placed Nov 6, 11:09 AM	\$550.00		
Nov-12 NCAA FOOTBALL POWER 5			
[209] WISCONSIN OV 33%-110			
Sports Bet			
Placed Nov 6, 11:09 AM	\$550.00		
Nov-12 NCAA FOOTBALL POWER 5			
[207] IOWA ST OV 46%-110			
Sports Bet			
Placed Nov 6, 11:09 AM	\$550.00		
Nov-12 NCAA FOOTBALL POWER 5			
[206] OLE MISS UN 66%-110			
Sports Bet			
Placed Nov 6, 11:09 AM	\$550.00		
Nov-12 NCAA FOOTBALL GROUP OF 5			
[204] TROY -8-110			
Sports Bet			
Placed Nov 6, 11:08 AM	\$550.00		
Nov-12 NCAA FOOTBALL GROUP OF 5			
[197] SAN JOSE ST +2-110			
Sports Bet			
Placed Nov 6, 11:08 AM	\$550.00		
Nov-12 NCAA FOOTBALL POWER 5			
[191] CALIFORNIA OV 48%-110			
Sports Bet			
Placed Nov 6, 11:08 AM	\$550.00		
Nov-12 NCAA FOOTBALL POWER 5			
[187] STANFORD OV 47%-110			
Sports Bet			
Placed Nov 6, 11:03 AM	\$550.00		
Nov-12 NCAA FOOTBALL POWER 5			
[137] PITTSBURGH OV 40%-110			
Sports Bet			
Placed Nov 6, 11:03 AM	\$550.00		
Nov-12 NCAA FOOTBALL POWER 5			
[136] W VIRGINIA +8-110			
Sports Bet			
Placed Nov 6, 11:03 AM	\$550.00		
Nov-12 NCAA FOOTBALL GROUP OF 5 at BALTIMORE, MD			
[133] NOTRE DAME OV 42%-110			
Sports Bet			
Placed Nov 6, 11:02 AM	\$550.00		
Nov-12 NCAA FOOTBALL GROUP OF 5			
[134] NAVY +17%-110			
Sports Bet			
Placed Nov 6, 11:02 AM	\$550.00		
Nov-12 NCAA FOOTBALL GROUP OF 5			
[130] U CONN UN 52%-110			
Sports Bet			
Placed Nov 6, 11:02 AM	\$550.00		
Nov-12 NCAA FOOTBALL POWER 5			
[128] SYRACUSE UN 52%-110			
Sports Bet			
Placed Nov 6, 11:02 AM	\$550.00		
Nov-12 NCAA FOOTBALL POWER 5			
[126] FLORIDA ST -6-110			
Sports Bet			
Placed Nov 6, 11:07 AM	\$550.00		
Nov-12 NCAA FOOTBALL GROUP OF 5			
[185] RICE +14-110			
Sports Bet			
Placed Nov 6, 11:07 AM	\$550.00		
Nov-12 NCAA FOOTBALL GROUP OF 5			
[186] RICE OV 60%-110			
Sports Bet			
Placed Nov 6, 11:07 AM	\$550.00		
Nov-12 NCAA FOOTBALL POWER 5			
[181] KANSAS ST +5-110			
Sports Bet			
Placed Nov 6, 11:07 AM	\$550.00		
Nov-12 NCAA FOOTBALL GROUP OF 5			
[179] TEMPLE OV 57%-110			
Sports Bet			
Placed Nov 6, 11:06 AM	\$550.00		
Nov-12 NCAA FOOTBALL POWER 5			
[177] RUTGERS OV 36%-110			
Sports Bet			
Placed Nov 6, 11:06 AM	\$550.00		
Nov-12 NCAA FOOTBALL POWER 5			
[177] RUTGERS +13-110			
Sports Bet			
Placed Nov 6, 11:06 AM	\$550.00		
Nov-12 NCAA FOOTBALL POWER 5			
[171] N WESTERN OV 36%-110			
Sports Bet			
Placed Nov 6, 11:06 AM	\$1,100.00		
Nov-12 NCAA FOOTBALL GROUP OF 5			
[169] UCF OV 47%-110			
Sports Bet			
Placed Nov 6, 11:11 AM	\$550.00		
Nov-12 NCAA FOOTBALL GROUP OF 5			
[223] WYOMING OV 41%-110			
Sports Bet			
Placed Nov 6, 11:11 AM	\$550.00		
Nov-12 NCAA FOOTBALL GROUP OF 5			
[230] HAWAII UN 56-110			
Sports Bet			
Placed Nov 6, 11:11 AM	\$550.00		
Nov-12 NCAA FOOTBALL GROUP OF 5			
[229] UTAH ST -9-110			
Sports Bet			
Placed Nov 6, 11:10 AM	\$550.00		
Nov-12 NCAA FOOTBALL GROUP OF 5			
[218] MID TENN ST -9-110			
Sports Bet			
Placed Nov 6, 11:10 AM	\$550.00		
Nov-12 NCAA FOOTBALL GROUP OF 5			
[215] NEW MEXICO OV 36%-110			
Sports Bet			
Placed Nov 6, 11:10 AM	\$550.00		
Nov-12 NCAA FOOTBALL POWER 5			
[212] ARKANSAS UN 63%-110			

Week 11 College Football Power Ratings (Vegas Ratings Not AP Poll Style)

Rk	Team	8/24	11/9	Diff	Rk	Team	8/24	11/9	Diff	Rk	Team	8/24	11/9	Diff
1.	Georgia	94.64	98.14	+3.5	50.	SMU	70.70	71.20	+0.5	99.	Southern Miss	57.65	57.65	0.0
2.	Ohio State	96.70	97.70	+1.0	51.	Auburn	78.13	71.13	-7.0	100.	Northern Illinois	61.56	57.56	-4.0
3.	Alabama	97.97	93.47	-4.5	52.	South Carolina	73.58	70.58	-3.0	101.	Rice	51.45	57.45	+6.0
4.	Michigan	86.42	89.92	+3.5	53.	West Virginia	71.00	70.00	-1.0	102.	Wyoming	55.35	57.35	+2.0
5.	Tennessee	81.74	88.74	+7.0	54.	BYU	78.99	69.49	-9.5	103.	Old Dominion	58.65	57.15	-1.5
6.	Texas	80.36	84.86	+4.5	55.	Liberty	65.90	69.39	+3.5	104.	Central Michigan	61.76	56.76	-5.0
7.	Oregon	79.43	83.93	+4.5	56.	Kansas	59.33	69.33	+10.0	105.	Buffalo	56.67	56.67	0.0
8.	Penn State	80.99	81.99	+1.0	57.	Michigan State	79.30	69.30	-10.0	106.	Boston College	69.62	56.62	-13.0
9.	LSU	78.93	81.93	+3.0	58.	James Madison	59.20	68.70	+9.5	107.	Kent State	55.67	56.17	+0.5
10.	USC	78.93	81.43	+2.5	59.	Air Force	70.65	68.65	-2.0	108.	Ball State	52.66	56.16	+3.5
11.	Clemson	87.27	81.27	-6.0	60.	Troy	61.26	68.26	+7.0	109.	Middle Tennessee	56.59	55.59	-1.0
12.	Florida State	76.02	81.02	+5.0	61.	UTSA	66.42	67.92	+1.5	110.	UTEP	55.82	55.32	-0.5
13.	Utah	83.71	80.71	-3.0	62.	Appalachian St	69.84	67.84	-2.0	111.	Eastern Michigan	55.24	55.24	0.0
14.	TCU	73.20	80.70	+7.5	63.	Houston	73.21	67.71	-5.5	112.	Miami (OH)	61.66	54.66	-7.0
15.	Notre Dame	84.79	80.29	-4.5	64.	Fresno State	71.52	67.52	-4.0	113.	Bowling Green	53.10	53.89	+0.8
16.	Ole Miss	79.65	80.15	+0.5	65.	Western Kentucky	64.51	67.51	+3.0	114.	UL-Monroe	48.66	53.66	+5.0
17.	UCLA	75.49	79.99	+4.5	66.	South Alabama	55.79	67.29	+11.5	115.	Western Michigan	60.11	53.61	-6.5
18.	Baylor	79.48	79.98	+0.5	67.	Duke	52.66	66.66	+14.0	116.	Texas State	51.05	53.55	+2.5
19.	Mississippi State	79.19	79.19	0.0	68.	Arizona State	68.27	66.27	-2.0	117.	USF	63.53	53.53	-10.0
20.	Kansas State	75.64	78.64	+3.0	69.	UAB	68.35	65.85	-2.5	118.	Louisiana Tech	54.88	52.88	-2.0
21.	Oklahoma	83.51	78.01	-5.5	70.	Miami (FL)	81.82	65.82	-16.0	119.	Arkansas State	50.79	52.79	+2.0
22.	Illinois	65.88	77.88	+12.0	71.	Memphis	67.15	65.65	-1.5	120.	Temple	48.99	51.99	+3.0
23.	Louisville	75.43	77.43	+2.0	72.	Arizona	61.61	65.61	+4.0	121.	Connecticut	43.40	50.90	+7.5
24.	Arkansas	79.82	77.32	-2.5	73.	Toledo	65.45	65.45	0.0	122.	Colorado	61.19	50.69	-10.5
25.	Minnesota	77.16	77.16	0.0	74.	San Jose State	59.12	65.12	+6.0	123.	New Mexico	48.75	47.75	-1.0
26.	Wisconsin	80.61	76.61	-4.0	75.	Marshall	66.25	64.75	-1.5	124.	Colorado State	58.69	47.69	-11.0
27.	Washington	73.19	75.69	+2.5	76.	Virginia	69.73	64.23	-5.5	125.	Nevada	54.73	47.23	-7.5
28.	Wake Forest	70.13	75.63	+5.5	77.	North Texas	59.09	64.09	+5.0	126.	Charlotte	53.15	46.65	-6.5
29.	Kentucky	78.61	75.61	-3.0	78.	Georgia State	65.05	64.05	-1.0	127.	Akron	46.96	46.46	-0.5
30.	Florida	76.80	75.30	-1.5	79.	California	66.36	63.86	-2.5	128.	New Mexico St	43.46	44.96	+1.5
31.	Iowa State	74.14	75.14	+1.0	80.	Nebraska	76.48	63.48	-13.0	129.	Hawaii	49.74	42.74	-7.0
32.	Oregon State	72.51	75.01	+2.5	81.	Indiana	66.13	63.12	-3.0	130.	FIU	41.22	41.72	+0.5
33.	Cincinnati	77.87	74.87	-3.0	82.	Stanford	68.49	62.48	-6.0	131.	Massachusetts	41.54	38.54	-3.0
34.	Purdue	75.16	74.66	-0.5	83.	Rutgers	63.26	62.26	-1.0	Biggest Gains From Start of Season		Biggest Losses From Start of Season		
35.	UCF	74.61	74.61	0.0	84.	Tulsa	63.23	62.23	-1.0	Duke	+14.0	Miami (FL)	-16.0	
36.	Maryland	73.39	74.39	+1.0	85.	Coastal Carolina	63.54	62.04	-1.5	Illinois	+12.0	Boston College	-13.0	
37.	Texas Tech	70.81	74.31	+3.5	86.	Virginia Tech	66.50	61.50	-5.0	South Alabama	+11.5	Nebraska	-13.0	
38.	Texas A&M	84.28	74.28	-10.0	87.	UL-Lafayette	64.88	61.38	-3.5	Kansas	+10.0	Colorado State	-11.0	
39.	Pittsburgh	79.06	74.06	-5.0	88.	Army	66.13	61.13	-5.0	James Madison	+9.5	Colorado	-10.5	
40.	Iowa	77.23	73.23	-4.0	89.	Florida Atlantic	58.39	60.39	+2.0	Connecticut	+7.5	Michigan State	-10.0	
41.	Syracuse	68.55	73.05	+4.5	90.	Georgia Southern	55.36	60.36	+5.0	Washington St	+7.5	USF	-10.0	
41.	Washington State	65.55	73.05	+7.5	91.	Ohio	55.31	60.31	+5.0	TCU	+7.5	Texas A&M	-10.0	
43.	North Carolina	74.10	72.60	-1.5	92.	Northwestern	63.66	60.16	-3.5	Tennessee	+7.0	BYU	-9.5	
44.	NC State	80.50	72.50	-8.0	93.	Vanderbilt	55.76	59.76	+4.0	Troy	+7.0	Oklahoma State	-9.0	
45.	Tulane	66.09	72.09	+6.0	94.	Georgia Tech	61.18	59.68	-1.5	San Jose State	+6.0	NC State	-8.0	
46.	Boise State	74.62	71.62	-3.0	95.	Navy	59.38	59.38	0.0	Tulane	+6.0	San Diego State	-7.5	
47.	Missouri	68.41	71.41	+3.0	96.	Utah State	64.58	58.58	-6.0	Rice	+6.0	Nevada	-7.5	
48.	Oklahoma State	80.27	71.27	-9.0	97.	San Diego State	65.83	58.33	-7.5	Wake Forest	+5.5			
49.	East Carolina	66.26	71.26	+5.0	98.	UNLV	54.84	57.84	+3.0					

Week 11 College Football Power Ratings by Conference

SEC			Big 12			Pac-12			Mountain West			CUSA		
Rk	Team	Rating	Rk	Team	Rating	Rk	Team	Rating	Rk	Team	Rating	Rk	Team	Rating
1.	Georgia	98.14	6.	Texas	84.86	7.	Oregon	83.93	46.	Boise State	71.62	61.	UTSA	67.92
3.	Alabama	93.47	14.	TCU	80.70	10.	USC	81.43	59.	Air Force	68.65	65.	Western Kentucky	67.51
5.	Tennessee	88.74	18.	Baylor	79.98	13.	Utah	80.71	64.	Fresno State	67.52	69.	UAB	65.85
9.	LSU	81.93	20.	Kansas State	78.64	17.	UCLA	79.99	74.	San Jose State	65.12	78.	North Texas	64.09
16.	Ole Miss	80.15	21.	Oklahoma	78.01	27.	Washington	75.69	96.	Utah State	58.58	89.	Florida Atlantic	60.39
19.	Mississippi State	79.19	31.	Iowa State	75.14	32.	Oregon State	75.01	97.	San Diego State	58.33	101.	Rice	57.45
24.	Arkansas	77.32	37.	Texas Tech	74.31	41.	Washington State	73.05	98.	UNLV	57.84	109.	Middle Tennessee	55.59
29.	Kentucky	75.61	48.	Oklahoma State	71.27	68.	Arizona State	66.27	102.	Wyoming	57.35	110.	UTEP	55.32
30.	Florida	75.30	53.	West Virginia	70.00	72.	Arizona	65.61	123.	New Mexico	47.75	118.	Louisiana Tech	52.88
38.	Texas A&M	74.28	56.	Kansas	69.33	80.	California	63.86	124.	Colorado State	47.69	126.	Charlotte	46.65
47.	Missouri	71.41	ACC			83.	Stanford	62.48	125.	Nevada	47.23	130.	FIU	41.72
51.	Auburn	71.13	Big Ten			122.	Colorado	50.69	129.	Hawaii	42.74	Sun Belt		
52.	South Carolina	70.58	Rk	Team	Rating	American			MAC			Rk	Team	Rating
93.	Vanderbilt	59.76	11.	Clemson	81.27	Rk	Team	Rating	Rk	Team	Rating	58.	James Madison	68.70
			12.	Florida State	81.02	33.	Cincinnati	74.87	73.	Toledo	65.45	60.	Troy	68.26
			23.	Louisville	77.43	35.	UCF	74.61	91.	Ohio	60.31	62.	Appalachian State	67.84
			28.	Wake Forest	75.63	45.	Tulane	72.09	100.	Northern Illinois	57.56	66.	South Alabama	67.29
			39.	Pittsburgh	74.06	49.	East Carolina	71.26	104.	Central Michigan	56.76	75.	Coastal Carolina	65.04
			41.	Syracuse	73.05	50.	SMU	71.20	105.	Buffalo	56.67	76.	Marshall	64.75
			43.	North Carolina	72.60	53.	Houston	67.71	107.	Kent State	56.17	79.	Georgia State	64.05
			44.	NC State	72.50	60.	Memphis	65.65	108.	Ball State	56.16	87.	UL-Lafayette	61.38
			67.	Duke	66.66	71.	Tulsa	62.23	111.	Eastern Michigan	55.24	90.	Georgia Southern	60.36
			70.	Miami (FL)	65.82	85.	Navy	59.38	112.	Miami (OH)	54.66	99.	Southern Miss	57.65
			77.	Virginia	64.23	95.	USF	53.53	113.	Bowling Green	53.89	103.	Old Dominion	57.15
			86.	Virginia Tech	61.50	117.	USF	53.53	115.	Western Michigan	53.61	114.	UL-Monroe	53.66
			94.	Georgia Tech	59.68	120.	Temple	51.99	127.	Akron	46.46	116.	Texas State	53.55
			106.	Boston College	56.62							119.	Arkansas State	52.79

Week 11 Computer Projected Lines for Every CFB Game

For the past six seasons we have posted computer projected lines for every game on Wednesday. **Games where there was of difference of more than 3 points saw our computer lines actually beat the Vegas line at a 421-355-12 (54%) clip! So far this season those games are 33-29-1.** That's pretty solid and actually better than our own handicapping in some seasons. Keep in mind, these computer lines don't take into consideration off-the-field factors like revenge or flat spots or if there are late-week injuries. They are basically a power-rating number difference between the two teams that also takes into consideration the home field advantage.

Of the 4 games where our computer is off more than 3 points compared to the Vegas line (highlighted), our favorite team this week to back would be **Miami, FL +1.5**.

The Comp column is the computer projected line and the Diff column is the difference between the Vegas line and the Computer line. "+" numbers in the difference column say back the underdog. "-" numbers in the difference column say back the favorite. Let us know if you have questions.

Wednesday, Nov 9th	Line	Comp	Diff	Friday, Nov 11th	Line	Comp	Diff
107 Northern Illinois				169 UCF			
108 W. Michigan	+1.0	+1.5	-0.5	170 Tulane	-1.5	0.0	+1.5
109 Buffalo				171 Northwestern			
110 Central Michigan	-2.5	-2.3	+0.2	172 Minnesota	-17.5	-19.8	-2.3
111 Kent St				173 Purdue			
112 Bowling Green	+2.0	+0.8	+1.2	174 Illinois	-6.5	-5.2	+1.3
Thursday, Nov 10th	Line	Comp	Diff	175 Texas St			
115 Tulsa				176 South Alabama	-16.5	-16.0	+0.5
116 Memphis	-6.5	-6.4	+0.1	177 Rutgers			
117 Georgia Southern				178 Michigan St	-10.0	-10.0	0.0
118 UL-Lafayette	-3.0	-3.5	-0.5	179 Temple			
Friday, Nov 11th	Line	Comp	Diff	180 Houston	-20.0	-18.5	+1.5
119 East Carolina				181 Kansas St			
120 Cincinnati	-5.0	-6.6	-1.6	182 Baylor	-2.5	-4.3	-1.8
121 Colorado				183 Massachusetts			
122 USC	-34.0	-33.7	+0.3	184 Arkansas St	-17.5	-16.8	+0.7
123 Fresno St				185 Rice			
124 UNLV	+9.5	+7.9	+1.6	186 W. Kentucky	-13.0	-12.6	+0.4
Saturday, Nov 12th	Line	Comp	Diff	187 Stanford			
125 North Carolina				188 Utah	-24.0	-21.7	+2.3
126 Wake Forest	-3.5	-5.3	-1.8	189 Arizona St			
127 Florida St				190 Washington St	-8.0	-9.8	-1.8
128 Syracuse	+6.5	+5.5	+1.0	191 California			
129 Liberty				192 Oregon St	-14.0	-13.4	+0.6
130 Connecticut	+14.5	+17.0	+2.5	193 Washington			
131 Virginia Tech				194 Oregon	-13.5	-11.5	+2.0
132 Duke	-9.5	-7.2	+2.3	195 Arizona			
133 Notre Dame				196 UCLA	-19.5	-16.9	+2.6
134 † Navy	+15.5	+20.9	-5.4	197 San Jose St			
135 Oklahoma				198 San Diego St	+2.5	+4.3	-1.8
136 West Virginia	+8.0	+5.0	+3.0	199 TCU			
137 Pittsburgh				200 Texas	-7.0	-7.2	-0.2
138 Virginia	+4.5	+7.1	-2.6	201 Texas A&M			
139 Indiana				202 Auburn	-1.5	-0.1	+1.4
140 Ohio St	-40.0	-38.6	+1.4	203 Army			
141 Missouri				204 Troy	-9.0	-9.4	-0.4
142 Tennessee	-20.5	-20.1	+0.4	205 Alabama			
143 Maryland				206 Ole Miss	+12.0	+10.6	+1.4
144 Penn St	-10.0	-11.6	-1.6	207 Iowa St			
145 Boston College				208 Oklahoma St	+1.5	+0.6	+0.9
146 NC State	-19.0	-18.9	+0.1	209 Wisconsin			
147 South Carolina				210 Iowa	+1.5	+0.1	+1.4
148 Florida	-7.5	-8.0	-0.5	211 LSU			
149 Vanderbilt				212 Arkansas	+3.0	+1.9	+1.1
150 Kentucky	-18.0	-18.9	-0.9	213 Georgia			
151 Nebraska				214 Mississippi St	+16.5	+16.0	+0.5
152 Michigan	-31.0	-30.2	+0.8	215 New Mexico			
153 Miami, FL	-1.5	+3.6	+5.1	216 Air Force	-21.5	-23.9	-2.4
154 Georgia Tech				217 Charlotte			
155 Louisville				218 Middle Tennessee	-10.5	-11.4	-0.9
156 Clemson	-7.0	-7.8	-0.8	219 North Texas			
157 Kansas				220 UAB	-6.0	-4.8	+1.2
158 Texas Tech	-3.5	-7.5	-4.0	221 Louisiana Tech			
159 SMU				222 UTSA	-18.0	-17.3	+0.7
160 South Florida	+17.5	+15.7	+1.8	223 Wyoming			
161 Southern Miss				224 Colorado St	+8.5	+7.4	+1.1
162 Coastal Carolina	-5.5	-6.6	-1.1	225 Florida Atlantic			
163 UL-Monroe				226 FIU	+15.5	+16.7	-1.2
164 Georgia St	-13.5	-12.1	+1.4	227 Boise St			
165 Appalachian St				228 Nevada	+21.0	+21.9	-0.9
166 Marshall	+1.0	+0.6	+0.4	229 Utah St			
167 James Madison				230 Hawaii	+11.5	+13.6	-2.1
168 Old Dominion	+7.5	+9.3	-1.8				

Betting CFB Openers

Every Sunday in Vegas at 11am PT, Circa Sports is the first book in the world to release CFB lines and we bet them every week. We think it's the best value bets we make all week. 2020 was the first season where we tracked every single bet we made and posted them in the weekly newsletters. We were very pleased with our 119-76-3 (61%) record on these Sunday bets with an average line value of 2.6 ppg! In 2021, we were 224-196-5 (53%) vs the Circa openers with an average line value of 1.8 ppg.

CFB Records (YTD):

VIP: 70-41-1 +21.2 units (CLV 93-10-9 +1.67 ppg)
 Newsletter: 28-18-1 +20 units (CLV 40-5-2 +0.9 ppg)
 Covers Release Show: 24-25 (CLV 36-7-6 +1.09 ppg)

Personal Bets (YTD):

FBS vs FBS: 307-251-11 (CLV 416-110-43 +2.1 ppg)
 FBS vs FCS: 47-23-1 (CLV 64-5-2 +3.56 ppg)
 FCS vs FCS: 131-116 (CLV 187-30-30 +1.78 ppg)
 Overall: 485-390-12 (CLV 667-145-75 +2.12 ppg)
 Vs Circa Openers: 230-197-9 (CLV 304-93-39 +1.7 ppg)
 Summer GOY: 26-16 (CLV 30-11-1 +3.0 ppg)

NFL Records (YTD):

19-16-1 +1.9 units
 Leans: 43-43-6
 Prop Leans: 3-1
 Preseason Leans: 6-4
 Newsletter: 18-13-1 +5.7 units.

Week 11 CFB Circa Bets (in rotation order):

(105) Ball St OVER 52.5-LOSS
 (111) Kent St OVER 54.5
 (112) Bowling Green +3
 (116) Memphis -6
 (119) East Carolina OVER 47.5
 (124) UNLV UNDER 59.5
 (124) UNLV +10
 (126) Wake Forest UNDER 78.5
 (127) Florida St -6
 (128) Syracuse UNDER 52.5
 (129) Liberty -13.5
 (130) Connecticut UNDER 52.5
 (133) Notre Dame OVER 42.5
 (134) Navy +17.5
 (136) West Virginia +8
 (137) Pittsburgh OVER 40.5
 (137) Pittsburgh -4
 (139) Indiana OVER 56
 (145) Boston College OVER 41.5
 (149) Vanderbilt OVER 45.5
 (151) Nebraska OVER 49.5
 (153) Miami, FL +3
 (158) Texas Tech -5
 (161) Southern Miss +12.5
 (163) UL-Monroe +14.5
 (169) UCF OVER 47.5
 (171) Northwestern OVER 36.5
 (177) Rutgers +13
 (177) Rutgers OVER 36.5
 (179) Temple OVER 57.5
 (179) Temple +20
 (181) Kansas St +5
 (185) Rice OVER 50.5
 (185) Rice +14
 (187) Stanford OVER 47.5
 (191) California OVER 48.5
 (197) San Jose St +2
 (204) Troy -8
 (206) Ole Miss UNDER 66.5
 (207) Iowa St -1
 (207) Iowa St OVER 46.5
 (209) Wisconsin OVER 33.5
 (212) Arkansas UNDER 63.5
 (215) New Mexico OVER 36.5
 (218) Middle Tennessee -9
 (223) Wyoming OVER 41.5
 (229) Utah St -9
 (230) Hawaii UNDER 56

Summer GOY Bets:

LSU +8.5 at Arkansas (Westgate)
 North Carolina +4 vs Wake Forest (South Point)

4★ = BEST
3★ = BETTER
2★ = GOOD
1★ = FAIR

THE POWERS' PACK

2★ CHICAGO -3 (-105) over Detroit
2★ Washington (+11) over PHILADELPHIA
2★ 6-point teaser (-120) Denver +8.5/San Fran -1

Games in Rotation Order

Thursday, November 10th

Atlanta 22 CAROLINA 20. A little bit of money has showed on Carolina and the UNDER as we're typing this Wednesday morning. It looks like the weather forecast could be a bit dicey with wind and rain. Carolina is better in ypp margin (-0.2 vs -0.6) despite playing a similar strength of schedule so that makes sense. They did trail Cincy 35-0 at halftime last week while we thought Atlanta exceeded expectations in their 3-point loss to the Chargers (ATL 5.2-5.0 in ypp). Leans on Carolina and the UNDER.

Sunday, November 13th

† **Tampa Bay 23 Seattle 21.** @Allianz Arena in Munich, Germany. Obviously, this is the first ever NFL game in Germany so it will be interesting to see what the crowd is like. Tampa broke their 3-game losing streak last week but the Bucs are still on a 0-6-1 ATS run while Seattle has won and covered 4 straight games. However, like most weeks, we've seen the money come in on Tampa here. Seattle is better in ypp margin (+0.5 vs 0.0). Lot of moving parts with an historical first. We lean dog and UNDER.

KANSAS CITY 30 Jacksonville 20. KC dominated Tennessee much worse than the final last week including a 499-229 yard edge. Meanwhile, Jacksonville rallied from a 17-0 deficit to beat Las Vegas. That broke a 5-game SU/ATS losing streak for the Jags. Obviously, KC is better in the stats and has played a tougher schedule. Slight lean on them here.

N.Y. GIANTS 24 Houston 18. The Giants come in off a bye after their shocking 6-2 SU/ATS start to the season. Obviously, there's been some "fool's gold" as they are No. 29 in ypp margin. Meanwhile, Houston is No. 31 in ypp margin. The Texans are 1-6-1 SU but have found a way to go 4-3-1 ATS. With that being said, the line seems a little light to us.

New Orleans 21 PITTSBURGH 20. Pittsburgh comes in off a bye. The Steelers look like their heading toward their first losing season of the Tomlin era. They rank dead last in ypp margin (-1.2) but note they have played the toughest schedule according to Sagarin. New Orleans is traveling on a short week. The Saints are No. 6 in ypp margin but clearly have under-achieved at 3-6 SU/ATS. The Steelers seem like a solid teaser-option.

2★ CHICAGO 27 Detroit 21. We like the Bears here with their new offensive confidence the last few weeks. Chicago has averaged 31.3 ppg the last 3 games after averaging just 15.5 ppg the first 6. They should continue to find success vs a Detroit defense that continues to rank dead last in ypp (6.4). Detroit got the upset vs Green Bay last week but the Lions were outgained 398-254. That gives us some value here.

MIAMI 27 Cleveland 23. Cleveland comes in off the bye as we're still a few weeks away from Deshaun Watson's suspension being lifted. The Browns are +0.1 in ypp margin but Miami is +0.5 and the Dolphins have played the tougher schedule (No. 6 vs No. 24). We want to back Miami here but they have gone 0-5-1 ATS in their last 6. Lean OVER.

BUFFALO 23 Minnesota 19. Obviously, this line is indicating that Josh Allen is doubtful this week for the Bills (Case Keenum would get the start). It opened 9.5 on the "look-aheads" last week. Buffalo comes in off the shocking upset loss to the Jets as 10.5-point favorites. They still rank No. 1 in the NFL in ypp margin despite playing the 2nd toughest schedule. Meanwhile, Minnesota is 7-1 SU but ranks No. 21 in ypp margin. This would have been a great game to back Buffalo if Allen were healthy. We'll lean with the UNDER which is 7-1 in Buffalo games this year.

HOME TEAM IN CAPS

TENNESSEE 20 Denver 18. Tennessee has now covered six straight games after they nearly pulled off the shocker on Sunday night in Kansas City. Do note the Titans are No. 24 in ypp margin and were outgained 499-229 last week. Meanwhile, Denver comes in off a bye after beating Jacksonville in London. As of press-time, we're not sure who will start for Tennessee at QB but the early money seems to indicate Tannehill might return. We lean Denver who is No. 4 in ypp margin thanks to their No. 1 defense but really like them in a teaser with such a low total.

LAS VEGAS 24 Indianapolis 17. The big news of the week is the Indianapolis firing of Frank Reich and the shocking hiring of ESPN analyst Jeff Saturday (former Colts center). Indianapolis Owner Jim Irsay "I'm glad he doesn't have any NFL experience. I'm glad he hasn't learned the fear that's in this league. Because it's tough on coaches, they're afraid, and they go to analytics, and it gets difficult. He doesn't have all that... We were fortunate he was available." We would have a best bet on the Raiders here but they are a mess themselves. Las Vegas has been favored in 6 of their 8 games but sit at 2-6 SU and just blew a 17-point lead to Jacksonville. Totals' players note the UNDER is 8-1 in Indy games.

L.A. RAMS 24 Arizona 20. Both teams are coming off losses that were actually worse than the finals. At 3-5 and 3-6, the Rams and the Cardinals playoff hopes are basically on the line in this game. L.A. has been better in ypp margin (-0.6 vs -0.9) and has played a tougher schedule (No. 7 vs No. 12). We lean with them here.

Dallas 23 GREEN BAY 18. Mike McCarthy returns to Lambeau where he was the coach from 2006-2018. The Cowboys come in at 6-2 SU and ATS and are fresh off a bye. Meanwhile, the Packers are playing their 10th straight week. The Packers have lost 5 games in a row and this is the worst GB team with a healthy QB in a generation or two. Early money is on Dallas but we're leaning with the UNDER.

SAN FRANCISCO 27 L.A. CHARGERS 20. San Francisco comes in off a bye. Prior to it, they crushed the Rams as Kyle Shanahan activated his new weapon Christian McCaffrey in a bunch of different ways. Meanwhile, the Chargers beat Atlanta 20-17 but disappointed us in the process. Despite a 4-4 record, the 49ers are No. 2 in ypp margin while the Chargers are No. 28 in ypp margin. We lean OVER and like the 49ers in a teaser.

Monday, November 14th

2★ WAS (plus the points) PHILADELPHIA 26 Washington 17. Philadelphia remains unbeaten at 8-0 SU but you're starting to pay a premium on them as this is their 3rd straight game laying double-digits. The Eagles rank No. 3 in ypp margin but have notably played the weakest schedule in the NFL (doesn't get that much harder down the stretch). Washington is 3-1 SU and 3-0-1 ATS in their last 4 games. We think they can stay within the huge number.

Teaser options (ranked strongest to weakest): 4-1 last week

1. Denver +8.5 (total 38).
2. San Francisco -1 (total 45.5).
3. Pittsburgh +8.5 (total 40).

Bye week:

Baltimore, Cincinnati, New England and N.Y. Jets

2022 NFL Schedules with Logs

Arizona (SU: 3-6, ATS: 4-5, O/U: 4-4-1)

Date	Opponent	Line	Score	ATS	O/U
9/11	Kansas City	+6	21-44 L	054	
9/18	at Las Vegas	+5	29-23 W	p52	
9/25	L.A. Rams	+3	12-20 L	u48	
10/2	at Carolina	+1	26-16 W	u44	
10/9	Philadelphia	+5	17-20 W	u48	
10/16	at Seattle	-2	9-19 L	u50	
10/20	New Orleans	-2	42-34 W	u44	
10/30	at Minnesota	+4	26-34 L	u48	
11/6	Seattle	-2	21-31 L	u49	
11/13	at L.A. Rams				
11/21	San Francisco				
11/27	L.A. Chargers				
12/4					
12/12	New England				
12/18	at Denver				
12/25	Tampa Bay				
1/1	at Atlanta				
1/8	at San Francisco				

Atlanta (SU: 4-5, ATS: 6-3, O/U: 5-4-1)

Date	Opponent	Line	Score	ATS	O/U
9/11	New Orleans	+5	26-27 W	u43	
9/18	at L.A. Rams	+10	27-31 W	u46	
9/25	at Seattle	+1	23-20 W	u48	
10/2	Cleveland	+1	23-23 W	u48	
10/9	at Tampa Bay	+10	15-21 W	u46	
10/16	San Francisco	+3	28-14 W	u45	
10/23	at Cincinnati	+6	17-35 L	u47	
10/30	Carolina	-4	37-34 L	u41	
11/6	L.A. Chargers	+2	17-20 L	u49	
11/10	at Carolina				
11/10	Chicago				
11/27	at Washington				
12/4	Pittsburgh				
12/11	at New Orleans				
12/17	at Baltimore				
1/1	Arizona				
1/8	Tampa Bay				

Baltimore (SU: 6-3, ATS: 4-4-1, O/U: 3-6-1)

Date	Opponent	Line	Score	ATS	O/U
9/11	at N.Y. Jets	-6	24-9 W	u44	
9/18	Miami	-3	38-42 L	u43	
9/25	at New England	-2	37-26 W	u45	
10/2	Buffalo	+3	20-23 P	u50	
10/9	Cincinnati	-3	19-17 L	u48	
10/16	at N.Y. Giants	-5	20-24 L	u45	
10/23	Cleveland	-6	23-20 L	u46	
11/27	at Tampa Bay	+2	27-22 W	u46	
11/27	at New Orleans	-1	27-13 W	u46	
12/10	Carolina				
12/17	at Jacksonville				
12/24	Denver				
1/1	at Pittsburgh				
1/8	at Cincinnati				

Buffalo (SU: 6-2, ATS: 4-3-1, O/U: 1-7-1)

Date	Opponent	Line	Score	ATS	O/U
9/8	at L.A. Rams	-2	31-10 W	u52	
9/19	Tennessee	-10	41-7 W	u47	
9/25	at Miami	-4	19-21 L	u54	
10/2	at Baltimore	-3	23-20 P	u50	
10/9	Pittsburgh	-14	38-3 W	u47	
10/16	at Kansas City	-2	24-20 W	u54	
10/23					
10/30	Green Bay	-10	27-17 L	u47	
11/6	at N.Y. Jets	-10	17-20 L	u46	
11/13	Minnesota				
11/20	Cleveland				
11/24	at Detroit				
12/1	at New England				
12/11	N.Y. Jets				
12/17	Miami				
12/24	at Chicago				
1/2	at Cincinnati				
1/8	New England				

Carolina (SU: 2-7, ATS: 3-6, O/U: 4-5-1)

Date	Opponent	Line	Score	ATS	O/U
9/11	Cleveland	-1	24-26 L	u42	
9/18	at N.Y. Giants	-1	16-19 L	u43	
9/25	New Orleans	+2	22-14 W	u41	
10/2	Arizona	-1	16-26 L	u44	
10/9	San Francisco	+6	15-37 L	u39	
10/16	at L.A. Rams	+9	10-24 L	u41	
10/23	Tampa Bay	+13	21-3 W	u38	
10/30	at Atlanta	+4	34-37 W	u41	
11/6	at Cincinnati	+7	21-42 L	u42	
11/10	Atlanta				
11/20	at Baltimore				
12/4	Denver				
12/11	at Seattle				
12/18	Pittsburgh				
12/24	Detroit				
1/1	at Tampa Bay				
1/8	at New Orleans				

Chicago (SU: 3-6, ATS: 4-4-1, O/U: 5-4-1)

Date	Opponent	Line	Score	ATS	O/U
9/11	San Francisco	+6	19-10 W	u38	
9/18	at Green Bay	+10	10-27 L	u42	
9/25	Houston	-3	23-20 P	u39	
10/2	at N.Y. Giants	+3	12-20 L	u39	
10/9	at Minnesota	+8	22-29 W	u44	
10/13	Washington	+1	7-12 L	u38	
10/24	at New England	+8	33-14 W	u40	
10/30	at Dallas	+9	29-49 L	u43	
11/6	Miami	+4	32-35 W	u48	
11/13	Detroit				
11/20	at Atlanta				
11/27	at N.Y. Jets				
12/4	Green Bay				
12/11					
12/18	Philadelphia				
12/24	Buffalo				
1/1	at Detroit				
1/8	Minnesota				

Cincinnati (SU: 5-4, ATS: 6-3, O/U: 3-5-1)

Date	Opponent	Line	Score	ATS	O/U
9/11	Pittsburgh	-7	20-23 L	u44	
9/18	at Dallas	-7	17-20 L	u42	
9/25	at N.Y. Jets	-6	27-12 W	u46	
10/2	Miami	-4	27-15 W	u49	
10/9	at Baltimore	+3	17-19 W	u48	
10/16	at New Orleans	-3	30-26 W	u43	
10/23	Atlanta	-6	35-17 W	u47	
10/31	at Cleveland	-3	13-32 L	p45	
11/6	Carolina	-7	42-21 W	u42	
11/13					
11/20	at Pittsburgh				
11/27	at Tennessee				
12/4	Kansas City				
12/11	Cleveland				
12/18	at Tampa Bay				
12/24	at New England				
1/2	Buffalo				
1/8	Baltimore				

Cleveland (SU: 3-5, ATS: 4-4, O/U: 5-2-1)

Date	Opponent	Line	Score	ATS	O/U
9/11	at Carolina	+1	26-24 W	u42	
9/18	N.Y. Jets	-6	30-31 L	u38	
9/25	Pittsburgh	-4	29-17 W	u38	
10/2	at Atlanta	-1	20-23 L	u48	
10/9	L.A. Chargers	+1	28-30 L	u47	
10/16	New England	-2	15-38 L	u43	
10/23	at Baltimore	+6	20-23 W	u45	
10/31	Cincinnati	+3	32-13 W	p46	
11/6					
11/13	at Miami				
11/20	at Buffalo				
11/27	Tampa Bay				
12/4	at Houston				
12/11	at Cincinnati				
12/17	Baltimore				
12/24	at New Orleans				
1/2	at Washington				
1/8	at Pittsburgh				

Dallas (SU: 6-2, ATS: 6-2, O/U: 3-5-1)

Date	Opponent	Line	Score	ATS	O/U
9/11	Tampa Bay	+2	3-19 L	u49	
9/18	Cincinnati	+7	20-17 W	u42	
9/25	at L.A. Rams	+1	23-16 W	u48	
10/2	Washington	-3	25-10 W	u41	
10/9	at L.A. Rams	+5	22-10 W	u41	
10/16	at Philadelphia	+7	17-26 L	u42	
10/23	Detroit	-7	24-6 W	u49	
10/30	Chicago	-9	49-29 W	u43	
11/13	at Green Bay				
11/20	at Minnesota				
11/24	N.Y. Giants				
12/4	Indianapolis				
12/11	Houston				
12/18	at Jacksonville				
12/24	at Tennessee				
1/8	at Washington				

Denver (SU: 3-5, ATS: 3-5, O/U: 1-7-1)

Date	Opponent	Line	Score	ATS	O/U
9/12	at Seattle	-6	16-17 L	u43	
9/18	Houston	-10	16-9 L	u45	
9/25	at N.Y. Giants	+1	23-16 W	u38	
10/2	at Las Vegas	-2	23-32 L	u45	
10/6	Indianapolis	-3	9-12 L	u42	
10/17	at Chargers	+3	16-19 W	u45	
10/23	N.Y. Jets	+2	9-16 L	u36	
10/30	at Jacksonville	+1	21-17 W	u41	
11/6					
11/13	at Tennessee				
11/20	Las Vegas				
11/27	at Carolina				
12/4	at Baltimore				
12/11	Kansas City				
12/18	Arizona				
12/25	at L.A. Rams				
1/8	at Kansas City				
1/15	L.A. Chargers				

Detroit (SU: 2-6, ATS: 4-3-1, O/U: 5-3-1)

Date	Opponent	Line	Score	ATS	O/U
9/11	Philadelphia	+6	35-37 W	u48	
9/18	Washington	PK	36-27 W	u48	
9/25	at Minnesota	-6	24-28 W	u51	
10/2	Seattle	-3	45-48 L	u47	
10/9	at New England	-3	0-29 L	u48	
10/16					
10/23	at Dallas	+7	6-24 L	u49	
10/30	Miami	+4	27-31 P	u52	
11/6	Green Bay	+4	15-9 W	u49	
11/13	at Chicago				
11/20	at N.Y. Giants				
11/24	Buffalo				
12/4	Jacksonville				
12/11	Minnesota				
12/18	at N.Y. Jets				
12/25	at Carolina				
1/2	Chicago				
1/8	at Green Bay				

Green Bay (SU: 3-6, ATS: 3-6, O/U: 3-6-1)

Date	Opponent	Line	Score	ATS	O/U
9/11	at Minnesota	+2	7-23 L	u46	
9/18	Chicago	-10	27-10 W	u42	
9/25	at Tampa Bay	+1	14-12 W	u42	
10/2	New England	-9	27-24 L	u40	
10/9	at N.Y. Giants	-9	22-27 L	u42	
10/16	N.Y. Jets	-7	10-27 L	u44	
10/23	at Washington	-4	21-23 L	u41	
10/30	at Buffalo	+10	17-27 W	u47	
11/6	at Detroit	-4	9-15 L	u49	
11/13	Dallas				
11/27	Philadelphia				
12/4	at Chicago				
12/11					
12/19	L.A. Rams				
12/25	at Minnesota				
1/8	Detroit				

Houston (SU: 1-6-1, ATS: 4-3-1, O/U: 4-4-1)

Date	Opponent	Line	Score	ATS	O/U
9/11	Indianapolis	-7	20-20 W	u46	
9/18	at Denver	+10	9-16 W	u45	
9/25	Buffalo	+3	20-23 P	u39	
10/2	L.A. Chargers	+5	24-34 L	u45	
10/9	at Jacksonville	+7	13-6 W	u43	
10/16					
10/23	at Las Vegas	+7	20-38 L	u46	
10/30	Tennessee	+1	10-17 L	u39	
11/6	Philadelphia	+14	17-29 W	u45	
11/13	at N.Y. Giants				
11/20	Washington				
11/27	at Miami				
12/4	Cleveland				
12/11	at Dallas				
12/18	Kansas City				
12/24	at Tennessee				
1/1	Jacksonville				
1/8	at Indianapolis				

Indianapolis (SU: 3-5-1, ATS: 3-6, O/U: 1-8-1)

Date	Opponent	Line	Score	ATS	O/U
9/11	at Houston	-7	20-20 L	u46	
9/18	at Jacksonville	-3	0-24 L	u43	
9/25	Kansas City	-4	20-17 W	u51	
10/2	Tennessee	-4	17-24 L	u43	
10/6	at Denver	+3	12-9 W	u42	
10/16	Jacksonville	-1	34-27 W	u41	
10/23	at Tennessee	+2	10-19 L	u43	
10/30	Washington	-3	16-17 L	u40	
11/3	at New England	+4	3-26 L	u40	
1/13	at Las Vegas				
2/20	Philadelphia				
2/28	Pittsburgh				
3/4	at Dallas				
3/11					
3/18	at Minnesota				
3/26	L.A. Chargers				
4/2	at N.Y. Giants				
4/8	/ Houston				

2022 CFB Schedules with Logs

Air Force (SU: 6-3, ATS: 4-5, O/U: 4-5)

Date	Opponent	Line	Score	ATS	O/U
9/3	Northern Iowa	-15	48-17 W	o56	
9/10	Colorado	-17	41-10 W	o50	
9/16	at Wyoming	-16	14-17 L	u47	
9/23	Nevada	-24	48-20 W	o46	
10/1	Navy	-14	13-10 L	u38	
10/8	at Utah State	-11	27-34 L	o53	
10/15	at UNLV	-10	42-7 W	u50	
10/22	Boise State	-2	14-19 L	u46	
10/29					
11/5	† Army	-7	13-7 L	u40	
11/12	New Mexico				
11/19	Colorado State				
11/26	at San Diego St				

Akron (SU: 1-8, ATS: 4-5-1, O/U: 4-5-1)

Date	Opponent	Line	Score	ATS	O/U
9/3	at Saint Francis-ot	+34	30-23 L	p53	
9/10	at Michigan St	+47	6-63 L	o67	
9/17	at Tennessee	+26	12-21 W	u52	
9/24	at Liberty	+8	28-31 W	o49	
10/1	Bowling Green	+10	34-55 L	o59	
10/8	at Ohio	+10	34-55 L	o59	
10/15	Central Michigan	+12	21-28 W	u60	
10/22	at Kent State	+16	27-33 W	u65	
10/29	Miami (OH)	+9	9-27 L	u51	
11/5					
11/8	Eastern Michigan	+6	28-34 P	o57	
11/19	at Buffalo				
11/26	at Northern Illinois				

Alabama (SU: 7-2, ATS: 5-4, O/U: 4-5)

Date	Opponent	Line	Score	ATS	O/U
9/3	Utah State	-42	55-9 W	u63	
9/10	at Texas	-21	20-19 L	u64	
9/17	UL-Monroe	-49	63-7 W	o61	
9/24	Vanderbilt	-40	55-3 W	u61	
10/1	at Arkansas	-17	49-26 W	o61	
10/8	Texas A&M	-24	24-20 L	u48	
10/15	at Tennessee	-9	49-52 L	o68	
10/22	Mississippi State	-21	30-6 W	u61	
10/29					
11/5	at LSU-ot	-13	31-32 L	o56	
11/12	at Ole Miss				
11/19	Austin Peay				
11/26	Auburn				

Appalachian St (SU: 5-4, ATS: 3-6, O/U: 4-5)

Date	Opponent	Line	Score	ATS	O/U
9/3	North Carolina	-3	61-63 L	o56	
9/10	at Texas A&M	+18	17-14 W	u54	
9/17	Troy	-14	32-28 L	o52	
9/24	James Madison	-46	28-32 L	o56	
10/1	The Citadel	-40	49-0 W	u54	
10/8	at Texas State	-19	24-36 L	o54	
10/15					
10/19	Georgia State	-9	42-17 W	u60	
10/29	Robert Morris	-50	42-3 L	u59	
11/3	at Coa. Carolina	-3	28-35 L	u65	
11/12	at Marshall				
11/19	Old Dominion				
11/26	at Georgia Southern				

Arizona (SU: 3-6, ATS: 5-4, O/U: 6-3)

Date	Opponent	Line	Score	ATS	O/U
9/3	at San Diego St	+6	38-20 W	o46	
9/10	Mississippi State	+12	17-39 L	u58	
9/17	North Dakota St	+3	31-28 W	o49	
9/24	at California	+3	31-49 L	o50	
10/1	Colorado	-18	43-20 W	o58	
10/8	Oregon	+13	22-49 W	u72	
10/15	at Washington	+14	39-49 W	o71	
10/22					
10/29	USC	+13	37-45 W	o74	
11/5	at Utah	+18	20-45 L	u68	
11/12	at UCLA				
11/19	Washington State				
11/26	Arizona State				

Arizona St (SU: 3-6, ATS: 4-5, O/U: 4-5)

Date	Opponent	Line	Score	ATS	O/U
9/1	Northern Arizona	-25	40-3 W	u52	
9/10	at Oklahoma St	+11	17-34 L	u58	
9/17	Eastern Michigan	-20	21-30 L	u56	
9/24	Utah	+17	13-34 L	u53	
10/1	at USC	+24	25-42 W	o61	
10/8	Washington	+13	45-38 W	o56	
10/15					
10/22	at Stanford	+3	14-15 W	u52	
10/29	at Colorado	-13	42-34 L	o48	
11/5	UCLA	+11	36-50 L	o67	
11/12	at Washington St				
11/19	Oregon State				
11/26	at Arizona				

Arkansas (SU: 5-4, ATS: 4-5, O/U: 7-2)

Date	Opponent	Line	Score	ATS	O/U
9/3	Cincinnati	-6	31-24 W	o54	
9/10	South Carolina	-9	44-30 W	o56	
9/17	Missouri State	-26	38-27 L	o60	
9/24	† Texas A&M	+1	21-23 L	u51	
10/1	Alabama	+17	26-49 L	o61	
10/8	at Mississippi St	+9	17-40 L	o55	
10/15	at BYU	+1	52-35 W	o66	
10/22					
10/29	at Auburn	-4	41-27 W	o60	
11/5	Liberty	-14	19-21 L	u61	
11/12	LSU				
11/19	Ole Miss				
11/26	at Missouri				

Arkansas St (SU: 2-7, ATS: 6-3, O/U: 5-4)

Date	Opponent	Line	Score	ATS	O/U
9/3	Grambling State	-25	58-3 W	o57	
9/10	at Ohio State	+44	12-45 W	u68	
9/17	at Memphis	+41	32-44 W	o64	
9/24	at Old Dominion	+6	26-29 W	u55	
10/1	UL-Monroe	-7	45-28 W	o59	
10/8	James Madison	+11	20-42 L	o55	
10/15	at Southern Miss	+4	19-20 W	u53	
10/22	at UL-Lafayette	+6	18-38 L	o51	
10/29	South Alabama	+9	3-13 L	u52	
11/5					
11/12	Massachusetts				
11/19	at Texas State				
11/26	Troy				

Army (SU: 3-5, ATS: 3-5, O/U: 5-3)

Date	Opponent	Line	Score	ATS	O/U
9/3	at Coa. Carolina	+1	28-38 L	o53	
9/10	UTSA-ot	+2	38-41 L	o54	
9/17	Villanova	-14	49-10 W	u56	
9/24					
10/1	Georgia State	-8	14-31 L	u54	
10/8	at Wake Forest	+16	10-45 L	u65	
10/15	Colgate	-31	42-17 L	o51	
10/22	UL-Monroe	-6	48-24 W	o55	
10/29					
11/5	† Air Force	+7	7-13 W	u40	
11/12	at Connecticut				
11/19	at Massachusetts				
11/26					
12/3					
12/10	† Navy				

Auburn (SU: 3-6, ATS: 3-6, O/U: 6-3)

Date	Opponent	Line	Score	ATS	O/U
9/3	Mercer	-30	42-16 L	o51	
9/10	San Jose State	-24	24-16 L	u48	
9/17	Penn State	+2	12-41 L	u47	
9/24	Missouri-ot	-7	17-14 L	o51	
10/1	LSU	+8	17-21 W	u44	
10/8	at Georgia	+27	10-42 L	u49	
10/15	at Ole Miss	+15	34-48 W	o55	
10/22					
10/29	Arkansas	+4	27-41 L	o60	
11/5	at Miami St	+12	33-39 W	o50	
11/12	Texas A&M				
11/19	Western Kentucky				
11/26	at Alabama				

Ball St (SU: 5-5, ATS: 5-5, O/U: 3-7)

Date	Opponent	Line	Score	ATS	O/U
9/1	at Tennessee	+37	10-59 L	o66	
9/10	Western Michigan	-6	30-37 L	o51	
9/17	Murray State	-21	31-40 W	u53	
9/24	at Ga Southern	+9	23-34 L	u57	
10/1	No. Illinois-Zot	+3	44-38 W	o58	
10/8	at Central Mich	+7	17-16 W	u43	
10/15	Connecticut	-9	25-21 L	u47	
10/22	Eastern Michigan	-2	16-20 L	u57	
10/29					
11/1	at Kent State	+7	27-20 W	u61	
11/8	at Toledo	+13	21-28 W	u53	
11/15	Ohio				
11/22	at Miami (OH)				

Baylor (SU: 6-3, ATS: 6-3, O/U: 7-2)

Date	Opponent	Line	Score	ATS	O/U
9/3	Albany	-42	69-10 W	o46	
9/10	at BYU-Zot	+2	20-26 L	u55	
9/17	Texas State	-30	42-7 W	u53	
9/24	at Iowa State	+2	31-24 W	u45	
10/1	Oklahoma State	-2	25-36 L	o56	
10/8					
10/13	at West Virginia	-3	40-43 L	o55	
10/22	Kansas	-10	35-23 W	o56	
10/29	at Texas Tech	+1	45-17 W	o61	
11/5	at Oklahoma	+3	38-35 W	o61	
11/12	Kansas State				
11/19	TCU				
11/26	at Texas				

Boise St (SU: 6-3, ATS: 4-4-1, O/U: 5-4)

Date	Opponent	Line	Score	ATS	O/U
9/3	at Oregon State	+1	17-34 L	u55	
9/10	at New Mexico	-17	31-14 P	o43	
9/17	UT-Martin	-24	30-7 L	u53	
9/24	at UTEP	-16	10-27 L	u44	
10/1	San Diego State	-6	35-13 W	o45	
10/8	Fresno State	-10	40-20 W	o45	
10/15					
10/22	at Air Force	+2	19-14 W	u46	
10/29	Colorado State	-25	49-10 W	o42	
11/5	BYU	-9	28-31 L	u54	
11/12	at Nevada				
11/19	at Wyoming				
11/26	at Utah State				

Boston College (SU: 2-7, ATS: 2-7, O/U: 4-5)

Date	Opponent	Line	Score	ATS	O/U
9/3	Rutgers	-9	21-22 L	u47	
9/10	at Virginia Tech	-2	10-27 L	u45	
9/17	Maine	-31	38-17 L	u48	
9/24	at Florida State	+18	14-44 L	o50	
10/1	Louisville	+13	34-33 W	o48	
10/8	Clemson	+21	3-31 L	u49	
10/15					
10/22	at Wake Forest	+20	15-43 L	u46	
10/29	at Connecticut	-7	31-13 L	u44	
11/5	Duke	+11	31-38 W	u47	
11/12	at NC State				
11/19	at Notre Dame				
11/26	Syracuse				

Bowling Green (SU: 5-4, ATS: 3-5-1, O/U: 6-3)

Date	Opponent	Line	Score	ATS	O/U
9/3	at UCLA	+24	17-45 L	o56	
9/10	E. Kentucky-7ot	-7	57-59 L	o57	
9/17	Marshall-ot	+17	34-31 P	o50	
9/24	at Mississippi St	+13	44-5 P	o53	
10/1	at Akron	-8	31-28 L	u49	
10/8	Buffalo	-2	7-38 L	o56	
10/15	at Miami (OH)	+7	17-13 W	u45	
10/22	at Central Mich	+6	34-18 W	o50	
10/29					
11/5	Western Michigan	-5	13-9 L	u48	
11/12	Kent State				
11/19	at Toledo				
11/26	at Ohio				

Buffalo (SU: 5-4, ATS: 6-2-1, O/U: 5-4)

9/17	at Coa. Carolina	+12	26-38 P	o59	
9/24	at Eastern Mich	+6	50-31 W	o56	
10/1	Miami (OH)	+3	24-20 W	u50	
10/8	at Bowling Green	-2	38-7 W	u46	
10/15	at Massachusetts	-17	34-7 W	u47	
10/22	Toledo	+7	34-27 W	o56	
10/29					
11/1	at Ohio	-2	24-45 L	o61	
11/9	at Central Michigan				
11/19	Akron				
11/26	Kent State				
BYU (SU= 5-5, ATS= 3-7, O/U= 6-4)					
Date	Opponent	Line	Score	ATS	O/U
9/3	at USF	-11	50-21 W	o58	

James Madison (SU: 5-3, ATS: 5-3, O/U: 5-3)

Date	Opponent	Line	Score	ATS	O/U
9/3	Middle Tenn	-4	44-7 W	u60	
9/10	Norfolk State	+41	63-7 W	o54	
9/17					
9/24	at Appalachian St	+6	32-28 W	o56	
10/1	Texas State	-22	40-13 W	o51	
10/8	at Arkansas State	-11	42-20 W	o55	
10/15	at Ga Southern	-13	38-45 L	o68	
10/22	Marshall	-9	12-26 L	u48	
10/29					
11/5	at Louisville	+6	10-34 L	u53	
11/12	at Old Dominion				
11/19	Georgia State				
11/26	Coastal Carolina				

Kansas (SU: 6-3, ATS: 7-1-1, O/U: 5-4)

Date	Opponent	Line	Score	ATS	O/U
9/2	Tennessee Tech	-30	56-10 W	o62	
9/10	at W. Virginia	+14	55-42 W	o59	
9/17	at Houston	+8	48-30 W	o58	
9/24	Duke	-7	35-27 W	u65	
10/1	Iowa State	+3	14-11 W	u59	
10/8	TCU	-7	31-38 P	u70	
10/15	at Oklahoma	+10	42-52 W	o66	
10/22	at Baylor	+10	23-35 L	o56	
10/29					
11/5	Oklahoma State	-3	37-16 W	u59	
11/12	at Texas Tech				
11/19	Texas				
11/26	at Kansas State				

Kansas St (SU: 6-3, ATS: 5-3-1, O/U: 4-5)

Date	Opponent	Line	Score	ATS	O/U
9/3	South Dakota	-27	34-0 W	u50	
9/10	Missouri	-7	40-12 W	u52	
9/17	Tulane	-13	10-17 L	u49	
9/24	at Oklahoma	+13	41-34 W	o53	
10/1	Texas Tech	-7	37-28 W	o56	
10/8	at Iowa State	-1	10-9 P	u45	
10/15					
10/22	at TCU	+3	28-38 L	o54	
10/29	Oklahoma State	-2	48-0 W	u57	
11/5	Texas	+3	27-34 L	o54	
11/12	at Baylor				
11/19	at West Virginia				
11/26	Kansas				

Kent St (SU: 3-6, ATS: 3-6, O/U: 3-6)

Date	Opponent	Line	Score	ATS	O/U
9/3	at Washington	+23	20-45 L	o61	
9/10	at Oklahoma	+33	3-3 W	u74	
9/17	LIU	-40	63-10 W	o64	
9/24	at Georgia	+45	22-39 W	u61	
10/1	Ohio	-12	31-24 L	u65	
10/8	at Miami (OH)	-5	24-27 L	u56	
10/15	at Toledo	+7	31-52 L	o62	
10/22	Akron	-16	33-27 L	u65	
10/29					
11/1	Ball State	-7	20-27 L	u61	
11/9	at Bowling Green				
11/16	Eastern Michigan				
11/26	at Buffalo				

Kentucky (SU: 6-3, ATS: 6-3, O/U: 1-8)

Date	Opponent	Line	Score	ATS	O/U
9/3	Miami (OH)	-15	37-13 W	u55	
9/10	at Florida	+6	26-16 W	u53	
9/17	Youngstown St	-30	31-0 W	u44	
9/24	Northern Illinois	-27	31-23 L	o53	
10/1	at Ole Miss	-6	19-22 W	u55	
10/8	South Carolina	-4	14-24 L	u44	
10/15	Mississippi State	+3	27-17 W	u50	
10/22					
10/29	at Tennessee	+10	6-44 L	u63	
11/5	at Missouri	+1	21-17 W	u40	
11/12	Vanderbilt				
11/19	Georgia				
11/26	Louisville				

Liberty (SU: 8-1, ATS: 5-4, O/U: 4-5)

Date	Opponent	Line	Score	ATS	O/U
9/3	at So. Miss	-3	29-27 L	u50	
9/10	UAB	+6	21-14 W	u50	
9/17	at Wake Forest	+17	36-37 W	o64	
9/24	Akron	-26	21-12 L	u52	
10/1	at Old Dominion	-3	38-24 W	u57	
10/8	at Massachusetts	-22	42-24 L	o45	
10/15	Gardner-Webb	24	21-20 L	u45	
10/22	BYU	+7	41-14 W	u58	
10/29					
11/5	at Arkansas	+14	21-19 W	u61	
11/12	at Connecticut				
11/19	Virginia Tech				
11/26	New Mexico State				

Louisiana Tech (SU: 3-6, ATS: 5-4, O/U: 8-1)

Date	Opponent	Line	Score	ATS	O/U
9/1	at Missouri	+20	24-52 L	o62	
9/10	Stephen F. Austin	-6	52-17 W	o64	
9/17	at Clemson	+33	20-48 W	o53	
9/24	at South Alabama	+13	14-38 L	u59	
10/1					
10/8	UTEP	-1	41-31 W	o52	
10/15	at North Texas	+6	27-47 L	o68	
10/22	Rice	+2	41-42 W	o56	
10/28	at FIU-Zot	-6	34-42 L	o57	
11/5	Middle Tennessee	+2	40-24 W	o63	
11/12	at UTSA				
11/19	at Charlotte				
11/26	UAB				

Louisville (SU: 6-3, ATS: 6-3, O/U: 4-5)

Date	Opponent	Line	Score	ATS	O/U
9/3	at Syracuse	-5	7-31 L	u55	
9/10	at UCF	+5	20-14 W	u62	
9/16	Florida State	+2	31-35 L	u57	
9/24	USF	-15	41-3 W	o63	
10/1	at Boston College	-13	33-34 L	o48	
10/8	at Virginia	+1	34-17 W	o47	
10/15					
10/22	Pittsburgh	-1	24-10 W	u55	
10/29	Wake Forest	+3	48-21 W	o66	
11/5	James Madison	-6	34-10 W	o53	
11/12	at Clemson				
11/19	NC State				
11/26	at Kentucky				

LSU (SU: 7-2, ATS: 6-3, O/U: 4-5)

Date	Opponent	Line	Score	ATS	O/U
9/4	at Florida State	-4	23-24 L	u51	
9/10	Southern	+44	65-17 W	o56	
9/17	Mississippi State	+3	31-16 W	u53	
9/24	New Mexico	-31	38-0 W	u43	
10/1	at Auburn	8	21-17 L	u44	
10/8	Tennessee	+2	13-40 L	u63	
10/15	at Florida	+2	45-35 W	o51	
10/22	Ole Miss	PK	45-20 W	o64	
10/29					
11/5	Alabama	+13	32-31 W	o56	
11/12	at Arkansas				
11/19	UAB				
11/26	at Texas A&M				

Marshall (SU: 5-4, ATS: 4-5, O/U: 1-8)

Date	Opponent	Line	Score	ATS	O/U
9/3	Norfolk St	-40	55-3 W	u59	
9/10	at Notre Dame	+20	26-21 W	u48	
9/17	at Bowl Green	-17	31-34 L	o50	
9/24	Purdue	-3	28-7 L	u51	
10/1	Gardner-Webb	-31	28-7 L	u55	
10/8					
10/15	UL-Lafayette	-10	13-23 L	u45	
10/22	at James Madison	+9	26-12 W	u48	
10/29	Coastal Carolina	-2	13-24 L	u54	
11/5	at Old Dominion	-3	12-0 W	u46	
11/12	Appalachian State				
11/19	at Georgia Southern				
11/26	Georgia State				

Maryland (SU: 6-3, ATS: 4-5, O/U: 4-5)

Date	Opponent	Line	Score	ATS	O/U
9/3	Buffalo	-24	31-10 L	o66	
9/10	at Charlotte	-28	56-21 W	o65	
9/17	SMU	-3	34-27 W	u73	
9/24	at Michigan	+17	27-34 W	u66	
10/1	Michigan State	-7	27-13 W	u58	
10/8	Purdue	-3	29-31 L	u51	
10/15	at Indiana	-11	38-33 L	o63	
10/22	Northwestern	-14	31-24 L	u51	
10/29					
11/5	at Wisconsin	+5	10-23 L	u47	
11/12	at Penn State				
11/19	Ohio State				
11/26	Rutgers				

Massachusetts (SU: 1-8, ATS: 3-6, O/U: 2-7)

Date	Opponent	Line	Score	ATS	O/U
9/3	at Tulane	+28	10-42 L	u59	
9/10	at Toledo	+28	10-55 L	u49	
9/17	Stony Brook	-1	20-3 W	u44	
9/24	at Temple	+10	0-28 L	u44	
10/1	at Eastern Mich	-20	13-20 W	u53	
10/8	Liberty	+22	24-42 W	o45	
10/15	Buffalo	+17	7-34 L	u47	
10/22					
10/29	New Mexico St	+1	13-23 L	u39	
11/4	at Connecticut	+15	10-27 L	u40	
11/12	at Arkansas State				
11/19	at Texas A&M				
11/26	Arkansas				

Memphis (SU: 4-5, ATS: 3-6, O/U: 8-1)

Date	Opponent	Line	Score	ATS	O/U
9/3	at Mississippi St	+17	23-49 L	o58	
9/10	at New York	-4	37-13 W	o47	
9/17	Arkansas State	-14	44-32 L	o64	
9/24	North Texas	-13	44-34 W	o58	
10/1	Temple	-18	24-3 L	u60	
10/8	Houston	-1	32-33 L	o57	
10/15	E Carolina	-40	45-47 W	o62	
10/22	at Tulane	+7	28-38 L	o55	
10/29					
11/5	UCF	+3	28-35 L	o60	
10/10	Tulsa				
11/19	North Alabama				
11/26	at SMU				

Miami, FL (SU: 4-5, ATS: 1-8, O/U: 3-6)

Date	Opponent	Line	Score	ATS	O/U
9/3	Bethune-Cook	-49	70-13 W	o60	
9/10	Southern Miss	-27	30-7 L	u50	
9/17	at Texas A&M	+6	17 L	u45	
9/24	Middle Tennessee	-25	31-45 L	o53	
10/1	North Carolina	-4	24-27 L	o57	
10/8	at Virginia Tech	-9	20-14 L	u53	
10/15	Duke	-10	21-45 L	o59	
10/22	at Virginia	-40	13-42 L	u44	
10/29	Florida State	+6	3-45 L	u54	
11/12	at Georgia Tech				
11/19	at Clemson				
11/26	Pittsburgh				

Miami, OH (SU: 4-6, ATS: 4-6, O/U: 2-8)

Date	Opponent	Line	Score	ATS	O/U
9/3	at Kentucky	+15	13-37 L	u55	
9/10	Robert Morris	-30	31-14 L	u54	
9/17	at Cincinnati	+24	17-38 W	o51	
9/24	at Northwestern	+7	17-14 W	u50	
10/1	at Buffalo	+3	20-24 L	u50	
10/8	Kent State	+5	27-24 W	u56	
10/15	at Bowling Green	-7	13-17 L	u45	
10/22	Western Michigan	-7	10-16 L	u44	
10/29	at Akron	-9	27-9 W	u51	
11/5	Ohio				
11/12	at Northern Illinois				
11/19	Ball State				
11/26	Ball State				

Michigan (SU: 9-0, ATS: 5-3-1, O/U: 2-6-1)

Date	Opponent	Line	Score	ATS	O/U
9/3	Colorado State	-31	51-7 W	u60	
9/10	Hawaii	-53	56-10 L	u66	
9/17	Connecticut	-47	59-0 W	p59	
9/24	Maryland	-17	34-27 L	u46	
10/1	at Iowa	-10	27-14 W	u62	
10/8	at Indiana	-23	31-10 L	u58	
10/15	Penn State	-7	41-17 W	u49	
10/22					
10/29	Michigan State	-22	29-7 P	u55	
11/5	at Rutgers	-26	52-17 W	o45	
11/12	Nebraska				
11/19	Illinois				
11/26	at Ohio State				

Michigan St (SU: 4-5, ATS: 4-4-1, O/U: 3-6)

9/17	at Washington	+3	28-39 L	o56*	
9/24	Minnesota	+3	7-34 L	u50	
10/1	at Maryland	+13	13-27 L	u58*	
10/8	Ohio State	+27	20-49 L	o64*	
10/15	Wisconsin-2ot	+7	34-28 W	o49*	
10/22					
10/29	at Michigan	+22	7-29 P	u55	
11/5	at Illinois	+16	23-15 W	u41	
11/12	Rutgers				
11/19	Indiana				
11/26	at Penn State				
Middle Tennessee ISU: 4-5, ATS: 4-5, O/U: 5-41					
Date	Opponent	Line	Score	ATS	O/U
9/2	at James Madison	+7	7-34 L	u60*	

San Diego St (SU: 5-4, ATS: 3-6, O/U: 3-6)				
Date	Opponent	Line	Score	ATS O/U
9/3	Arizona	-6	20-38 L	u46
9/10	Idaho State	-32	38-7 L	u50
9/17	at Utah	-22	7-35 L	u48
9/24	Toledo	+2	17-14 W	u44
9/30	at Boise State	+6	13-35 L	u38
10/8	Hawaii	-24	16-14 L	u49
10/15				
10/22	at Nevada	-7	23-7 W	u36
10/29	at Fresno State	+11	28-32 W	u44
11/5	UNLV	-5	14-10 L	u47
11/12	San Jose State			
11/18	at New Mexico			
11/26	Air Force			

San Jose St (SU: 6-2, ATS: 4-4, O/U: 2-6)

Date	Opponent	Line	Score	ATS O/U
9/3	Portland State	-22	21-17 L	u51
9/10	at Auburn	+24	16-24 W	u48
9/17				
9/24	Western Mich	-6	34-6 W	u48
10/1	at Wyoming	-2	33-16 W	u42
10/7	UNLV	-6	40-7 W	u51
10/15	at Fresno State	-7	10-17 L	u47
10/22	at New Mexico St	Cancelled		
10/29	Nevada	-24	35-28 L	u44
11/5	Colorado State	-23	28-16 L	u44
11/12	at San Diego State			
11/19	at Utah State			
11/26	Hawaii			

SMU (SU: 5-4, ATS: 4-5, O/U: 4-5)

Date	Opponent	Line	Score	ATS O/U
9/3	at North Texas	-9	48-10 W	u67
9/10	Lamar	-48	45-16 L	u66
9/17	at Maryland	+3	27-34 L	u73
9/24	TCU	+2	34-42 L	u72
10/1				
10/8	at UCF	+3	19-41 L	u65
10/14	Navy	-12	40-34 L	u59
10/22	Cincinnati	+3	27-29 W	u59
10/29	at Tulsa	-1	45-34 W	u63
11/5	Houston	-3	77-63 W	u66
11/12	at USC			
11/17	at Tulane			
11/26	Memphis			

South Alabama (SU: 7-2, ATS: 6-3, O/U: 5-4)

Date	Opponent	Line	Score	ATS O/U
9/3	Nicholls State	-13	48-7 W	u53
9/10	at Central Mich	+6	38-24 W	u57
9/17	at UCLA	+15	31-32 W	u57
9/24	Louisiana Tech	-13	38-14 W	u59
10/1	at UL-Lafayette	-8	20-17 L	u47
10/8				
10/15	UL-Monroe	-17	41-34 L	u51
10/20	Troy	-3	6-10 L	u47
10/29	at Arkansas State	-9	31-3 W	u52
11/5	at Ga Southern	-3	38-31 W	u60
11/12	Texas State			
11/19	at Southern Miss			
11/26	Old Dominion			

South Carolina (SU: 6-3, ATS: 5-4, O/U: 5-4)

Date	Opponent	Line	Score	ATS O/U
9/3	Georgia State	-12	35-14 W	u55
9/10	at Arkansas	+9	30-44 L	u56
9/17	Georgia	+25	7-48 L	u57
9/24	Charlotte	-23	56-20 W	u54
10/1	So. Carolina St	-40	50-10 L	u57
10/8	at Kentucky	+4	24-14 W	u44
10/15				
10/22	Texas A&M	+3	30-24 W	u44
10/29	Missouri	-3	10-23 L	u45
11/5	at Vanderbilt	-6	38-27 W	u49
11/12	at Florida			
11/19	Tennessee			
11/26	at Clemson			

Southern Miss (SU: 5-4, ATS: 6-3, O/U: 5-4)

Date	Opponent	Line	Score	ATS O/U
9/3	Liberty-40t	+3	27-29 W	u50
9/10	at Miami (FL)	+27	7-30 W	u50
9/17	Northwestern St	-33	64-10 W	u50
9/24	at Tulane	+12	27-24 W	u48
10/1				
10/8	at Troy	+7	10-27 L	u44
10/15	Arkansas State	-4	20-19 L	u53
10/22	at Texas State	-2	20-14 W	u43
10/27	UL-Lafayette	+2	39-24 W	u43
11/5	Georgia State	-2	14-42 L	u48
11/12	at Coastal Carolina			
11/19	South Alabama			
11/26	at UL-Monroe			

Stanford (SU: 3-6, ATS: 2-7, O/U: 4-4-1)

Date	Opponent	Line	Score	ATS O/U
9/3	Colgate	-40	41-10 L	u51
9/10	USC	+9	28-41 L	u66
9/17				
9/24	at Washington	+14	22-40 L	p62
10/1	at Oregon	+17	27-45 L	u63
10/8	Oregon State	+4	27-28 W	u53
10/15	at Notre Dame	+16	16-14 W	u53
10/22	Arizona State	-3	15-14 L	u52
10/29	at UCLA	+16	13-38 L	u64
11/5	Washington St	+3	14-52 L	u48
11/12	at Utah			
11/19	at California			
11/26	BYU			

Syracuse (SU: 6-3, ATS: 5-3, O/U: 3-5)

Date	Opponent	Line	Score	ATS O/U
9/3	Louisville	+5	31-7 W	u55
9/10	at Connecticut	-23	48-14 W	u49
9/17	Purdue	-1	32-29 W	u59
9/24	Virginia	-10	22-20 L	u53
10/1	Wagner	-54	59-0 N/A	63
10/8				
10/15	NC State	-3	24-9 W	u42
10/22	at Clemson	+14	21-27 W	u50
10/29	Notre Dame	+1	24-41 L	u48
11/5	at Pittsburgh	+3	19-19 L	u47
11/12	at Florida State			
11/19	at Wake Forest			
11/26	at Boston College			

TCU (SU: 9-0, ATS: 7-1-1, O/U: 6-3)

Date	Opponent	Line	Score	ATS O/U
9/2	at Colorado	-13	38-13 W	u59
9/10	Tarleton State	-40	59-17 W	u66
9/17				
9/24	at SMU	-2	42-34 W	u72
10/1	Oklahoma	+5	55-24 W	u69
10/8	at Kansas	-7	38-31 P	u70
10/15	Oklahoma St-20t	-5	43-40 L	u69
10/22	Kansas State	-3	38-28 W	u54
10/29	at West Virginia	-7	41-31 W	u69
11/5	Texas Tech	-8	34-24 W	u69
11/12	at Texas			
11/19	at Baylor			
11/26	Iowa State			

Temple (SU: 3-6, ATS: 6-3, O/U: 4-5)				
Date	Opponent	Line	Score	ATS O/U
9/2	at Duke	+9	0-30 L	u51
9/10	Lafayette	-14	30-14 W	u59
9/17	Rutgers	+18	14-16 W	u42
9/24	at Massachusetts	-10	28-0 W	u44
10/1	at Memphis	+18	3-24 L	u50
10/8				
10/13	at UCF	+23	13-70 L	u46
10/21	Tulsa	+13	16-27 W	u53
10/29	at Navy-ot	+14	20-27 W	u41
11/5	USF	+3	54-28 W	u49
11/12	at Houston			
11/18	Cincinnati			
11/26	East Carolina			

Tennessee (SU: 8-1, ATS: 7-2, O/U: 5-4)

Date	Opponent	Line	Score	ATS O/U
9/1	Ball State	-37	59-10 W	u66
9/10	at Pittsburgh-ot	-6	34-27 W	u63
9/17	Akron	-47	63-6 W	u67
9/24	Florida	-11	38-33 L	u62
10/1				
10/8	at LSU	-2	40-13 W	u63
10/15	Alabama	+9	52-49 W	u68
10/22	UT-Martín	-38	65-24 W	u71
10/29	Kentucky	-10	44-6 W	u63
11/5	at Georgia	+10	13-27 L	u65
11/12	Missouri			
11/19	at South Carolina			
11/26	at Vanderbilt			

Texas (SU: 6-3, ATS: 6-3, O/U: 4-5)

Date	Opponent	Line	Score	ATS O/U
9/3	UL-Monroe	-37	52-10 W	u64
9/10	Alabama	+21	19-20 W	u64
9/17	UTSA	-13	41-20 W	u57
9/24	at Texas Tech-ot	-7	34-37 L	u60
10/1	West Virginia	-7	38-20 W	u61
10/8	Yoklahoma	-7	49-0 W	u65
10/15	Iowa State	-15	24-21 L	u58
10/22	at Oklahoma St	-6	34-41 L	u48
10/29				
11/5	at Kansas State	-3	34-27 W	u54
11/12	TCU			
11/19	at Kansas			
11/26	Baylor			

Texas A&M (SU: 3-6, ATS: 3-5-1, O/U: 4-5)

Date	Opponent	Line	Score	ATS O/U
9/3	Sam Houston St	-36	31-0 W	u54
9/10	Appalachian St	-18	14-17 L	u54
9/17	Miami (FL)	-6	17-9 W	u45
9/24	at Arkansas	-1	23-21 W	u51
10/1	at Mississippi St	+4	24-22 L	u51
10/8	at Alabama	+24	20-24 W	u48
10/15				
10/22	at South Carolina	-3	24-30 L	u44
10/29	Ole Miss	+3	28-31 P	u55
11/5	at Auburn	-1	24-41 L	u53
11/12	at Auburn			
11/19	Massachusetts			
11/26	LSU			

Texas St (SU: 3-6, ATS: 5-4, O/U: 4-5)

Date	Opponent	Line	Score	ATS O/U
9/3	at Nevada	-2	14-38 L	u51
9/10	FIU	-14	41-12 W	u62
9/17	at Baylor	-17	34-0 W	u53
9/24	Houston Baptist	-27	34-0 W	u53
10/1	at James Madison	+22	13-40 L	u51
10/8	Appalachian St	+19	36-24 W	u51
10/15	at Troy	+16	14-17 W	u47
10/22	Southern Miss	+2	14-20 L	u43
10/29				
11/5	at UL-Monroe	+2	30-31 W	u52
11/12	at South Alabama			
11/19	Arkansas State			
11/26	UL-Lafayette			

Texas Tech (SU: 4-5, ATS: 4-5, O/U: 6-3)

Date	Opponent	Line	Score	ATS O/U
9/3	Murray State	-38	63-10 W	u63
9/10	Houston-20t	-4	33-30 L	u62
9/17	at NC State	+10	14-27 L	u55
9/24	Texas-ot	+7	37-34 W	u60
10/1	at Kansas State	+7	28-37 L	u56
10/8	at Oklahoma St	+11	31-41 W	u65
10/15				
10/22	West Virginia	-5	48-10 W	u65
10/29	Baylor	-1	17-45 L	u61
11/5	at TCU	+8	24-34 L	u69
11/12	Kansas			
11/19	at Iowa State			
11/26	Oklahoma			

Toledo (SU: 7-3, ATS: 4-6, O/U: 5-5)

Date	Opponent	Line	Score	ATS O/U
9/1	LIU	-47	37-0 L	u57
9/10	Massachusetts	-28	55-10 W	u49
9/17	at Ohio State	+31	21-77 L	u63
9/24	at San Diego St	-2	14-17 L	u44
10/1	Central Michigan-6	38-17 W	u56	
10/8	at No. Illinois	-6	52-32 W	u59
10/15	Kent State	-7	52-31 W	u62
10/22	at Eastern Mich	-4	27-34 L	u56
10/29	at Eastern Mich	-4	27-24 L	u54
11/5				
11/12	Ball State	-13	28-21 L	u53
11/19	Bowling Green			
11/26	at Western Michigan			

Troy (SU: 7-2, ATS: 7-2, O/U: 3-6)

Date	Opponent	Line	Score	ATS O/U
9/10	Ole Miss	-37	38-17 L	u52
9/17	at Appalachian St	+14	28-32 W	u52
9/24	Marshall	+3	16-7 W	u51
10/1	at W. Kentucky	+5	34-27 W	u55
10/8	Southern Miss	-7	27-10 W	u44
10/15	Texas State	-16	17-14 L	u47
10/22	at South Alabama	+3	10-6 W	u47
10/29				
11/5	at UL-Lafayette	-3	23-17 W	u42
11/12	Army			
11/19	UL-Monroe			
11/26	at Arkansas State			

Tulane (SU: 8-1, ATS: 8-1, O/U: 3-6)

Date		Line	Score	ATS	O
9/3	Massachusetts	-28*	42-10 W		u
9/10	Alcorn State	-35*	52-0 W		u
9/17	at Kansas State	+13*	17-10 W		u
9/24	Southern Miss	-12	24-27 L		o
10/30	at Houston-ot	+4	27-24 W		u
10/8	East Carolina	-2*	24-9 W		u
10/15	at USF	-12	45-31 W		u
10/20	Memphis	-7	38-28 W		o
10/29					
11/5	at Tulsa	-6*	27-13 W		u
11/12	UCF				
11/17	SMU				
11/26	at Cincinnati				