

# Eugene Garden Club News

March 2014

Volume 9, Issue 6

Editors: Sherry Cossey, Georgia Zahar & Janet Marcisz

56 members

Eugene Garden Club

1645 High Street

Eugene, OR 97401



## President's Corner

Hey garden club friends. I hope everyone is enjoying March with our much needed raiss and occasional sunny tease days.

I am enjoying playing nanny to my grandson while we visit Oahu for 2 weeks. Aah, the warmth and tropical beauty is such a welcome change. I'm taking lots of pix of fun at the beach and shots of the native trees, flowers, birds and critters. So much to experience -- I'm soaking in every moment.

When I return on the 13<sup>th</sup>, I'll catch up on all that's happening with our members and around the clubhouse.

I am hoping that my dahlia tubers will have lots of with eyes for the Dahlia tuber auction on April 3<sup>rd</sup>.

Sending warm wishes your way; see you Tuesday, the 18<sup>th</sup>.



. . . . . *Camille Noel*  
*EGC President*

Save the Date

:::

March 27

Plant "Nerd" Night

## Eugene Garden Club Meeting

Tuesday, March 18, 2014

9:30 a.m. Clubhouse open  
to hang photographs

11:15 a.m. Photo Contest

11:30 a.m. Brown Bag Lunch

12:15 p.m. Meeting

1:00 p.m. *Feathers & Flora*  
By Dan Gleason

HOSTESSES: \*Jackie Getty, Juanita Manley  
Janet Calvert, Sally Townsend

GREETER: Sharon Blade

## March Meeting Features Birds

Those of us who attend the March meeting and hear Dan Gleason are in for a treat. We will get a whole new insight as to how birds and plants interact.

You may have read Dan's columns "Backyard Habitats" in the *Register Guard*. He is a retired faculty member of the Biology Department at the UO, and returns each year to teach the Field Ornithology course. He and his wife, Barbara, own the new Wild Birds Unlimited store in downtown Eugene.

This is a great opportunity to bring a friend and learn some new information about the natural world in your garden or neighborhood.

*Ruth Fry*



# Delta Ponds Park Yesterday & Today.....

Now that spring is on the way I suggest a walk through the Delta Ponds Park.

Historically the Willamette River flooded through the Delta Ponds. During the 1950's and 60's, pond peninsulas and islands were formed by gravel extraction operations. These activities provided much of the gravel for construction of area roadways including Interstate 105. Delta Hwy was built during this time as well.

Today this area is teeming with birds and wildlife. Much work has been done to eradicate blackberry bushes. Native plants have been planted & seem to be thriving.

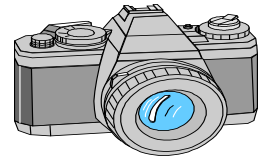
As you walk along you are going to see a wide assortment of water fowl & birds. The ponds are home to the Great Blue Heron, Coots, Mallards, Cormorants, Red Winged Blackbirds and Geese. In the spring the ponds are a prime nesting area for the Willamette Valley Canada Goose & the Heron.

The ponds also have one of the largest remaining populations of Western Pond Turtles in the Southern Willamette Valley. On a warm day you may see many basking on logs placed around the ponds.

You can access the ponds on the east side of Delta Hwy via Goodpasture Island Road and Fir Acres. On the west side of Delta Hwy you can enter the park at Goodpasture Island Road and Kingsley. This location is also Handicapped Accessible. ENJOY!

*Georgia Zahar  
Birds & Wildlife Chair*

## OSFGC PHOTOGRAPHY CONTEST PLANNED



Bring your entries for the **State Photography Contest** to our March EGC meeting. Winners in the following categories will be entered in the **Willamette District Photo Contest** on March 21 at the Eugene clubhouse. Winners at the District level will be taken to the state contest at State Convention in June.

1. Landscapes/Seascapes - Color & B&W
2. Gardens - Color & B&W
3. Floral - Color & B&W
4. Birds, Butterflies, Insects - Color & B&W
5. Pets - Color & B&W

Criteria for pictures:

- Printed 8x10, no frames, and not digitally touched up. Winners will need to be matted for the district contest
- Taken between Jan.1, 2013 and Apr.1, 2014
- Taken by current garden club member
- Information about entry written on card accompanying photo (see current *The Mahonia*)

**On the back of the photo, secure a card with the following information: (Do not write directly on the picture.)**

- Title (if any)**
- Name of photographer**
- Garden Club and District**
- Date & location of photo**
- Make & Model of camera**
- Type of media (film or digital)**
- Entry category**



## **POTTING PARTY PLANNED**



The Oregon Plant Fair, May 10, 2014, at Alton Baker Park, which benefits Eugene Garden Club and the Willamette District Garden Club is the perfect place to share your garden treasures and raise needed funds for our clubs' activities.

New member Gail Karlsen will host a Potting Party at her home Friday, April 11, in preparation for the sale where you can come and either bring plants to pot up or just come to help pot up other people's plants. Good looking plants attract the most attention and sell first!

Come in appropriate clothes, gloves, garden shoes, and bring your favorite potting tools and any of those wonderful adoptable plants from your garden. Or just come and help. It is wonderful if you have your plants' common and botanical names as well as preferred growing conditions to mark on the white tags (use #2 pencil.) Tags are available ahead of time at the garden club meeting as well as at the potting party.

It's a great idea to have a picture of the plant when it is at its peak to help buyers know what they are purchasing. Use seed catalogs or go online to find color photos. Customers like to know what color the flowers are going to be too.

For members who pot their own plants at home, we will have a supply of potting soil, pots, and blank tags that you can pick up. Please bring buckets for the soil. Contact Sharon Wilson about details.

# Plant Nerd Night



EGC's annual Plant Nerd Night is scheduled for Thursday evening, March 27.

The doors open at 6 p.m.; the program begins at 7 p.m.

Nurseries participating include Bloomers Nursery, Doak Creek Native Plant Nursery, Johnson Brothers Greenhouses, Log House Plants, and Territorial Seed Company. Committee members Sharon Blade, Ruth Fry and Dorothy Cruickshank, remind us to bring our friends and neighbors -- and wallets for another enjoyable event. Maybe you will even win a drawing!

Proceeds from the Plant Nerd Night help to fund our civic and your projects—such as the Shelton-McMurphey-Johnson House and Pearl Buck children activities.

## WILLAMETTE DISTRICT MEETS AT E.G.C.

The Spring General Meeting, potluck, & program for the Willamette District Garden Clubs will be hosted by the Eugene Garden Club on Friday, March 21, 9:30 a.m.-2:00 p.m. at the EGC clubhouse. All garden club members (and the public) are invited to attend.

A committee of EGC folks are busy working on producing favors for attendees, setting up for the meeting, providing goodies for morning “coffee”, soliciting items to offer as prizes in a drawing of all attendees. If you would like to help, contact our president, Camille Noel, at 541.337.0528, or [cbnoel2@comcast.net](mailto:cbnoel2@comcast.net).

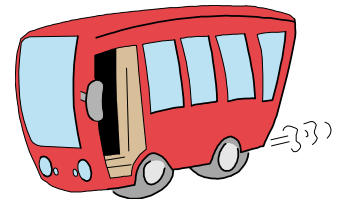
\*\*Coffee and goodies at 9:30 a.m. before the 10:00 meeting.

\*\*Lunch --. Bring a potluck dish and your own table service

\*\*Do bring things for the Country Store. And there will be a Raffle as each club brings a raffle basket or item.

**\*\*\*The program -- After lunch, Dick Lamster of Lane County Audubon Society will present, “Birds in Your Garden”.**

Let's all be there, and support our own Sharon Wilson who is the Willamette District Director. We have the biggest club in our district – let's have the most in attendance.



### MAY BRINGS BUS TRIP

Our May meeting is a bus trip to Portland area featuring the Lan Su Chinese Garden, lunch at the Oregon Culinary Institute, and Joy Creek Nursery in Scappoose. Invite your friends.

Sharon Bladen & Pat Kramer are coordinating this event and want to be sure we have lots of people, club members and friends – at least 44! The cost is \$41. Reserve a place by calling or emailing Sharon at 541.688.6592. [sljdblade@comcast.net](mailto:sljdblade@comcast.net).

## “Rockin’ 50’s In the Garden”



### A Standard Flower Show

Sponsored by the  
Willamette District Garden Clubs

Member Willamette District Garden Clubs  
Member of National Garden Clubs, Inc.  
Member Pacific Region Garden Clubs  
Member of Oregon State Federation of Garden Clubs, Inc.

At the First Presbyterian Church  
216 South 3<sup>rd</sup> Street, Cottage Grove, Oregon

April 25 – 26, 2014  
Friday the 25th - 1:00 – 8:00 pm  
Saturday the 26th - 10:00 am – 2:00 pm

Schedules available this Month at EGC

# INS & OUTS

## OF THE EUGENE GARDEN CLUB

### . . . Members

Gail Karlsen joined the Eugene Garden Club last month right after she presented the great MG program on Pest & Soil Management

Eldoris Cobban and her hubby have been married for 68 years!

### . . . Trustees

1. New lighting will be installed for the front area of our building, March 12. !!!

2. Developed a letter to the City of Eugene police department concerning the lack of funds for their officers to investigate and follow up on "tagging" problems, especially in the area where our clubhouse is located. The letter was signed by officers and past presidents

### . . . Building Use

Dianne Dewey, Juanita Manley, Sharon Wilson, Jennifer Rabner, and Janet Calvert have been reworking our building use policies (paperwork!), and will have that in place within a few weeks.

### . . . Sidewalk trees

The folks who worked with the City of Eugene, the Friends of Trees, and our EGC wishes to schedule the planting of new sidewalk trees wish to invite us to a **planting party for the new trees at EGC; 9:30 a.m., Saturday, April 5**, with Friends of Trees; coffee & snacks. The tree types will be revealed then!

The committee spent much time coordinating the various groups' wish lists and requirements. We could not just choose what trees WE would like there! And – the soil type for this area eliminated many of our members' preferences. We thank the committee. (At this time they wish to remain anonymous so that folks don't criticize to them.)

### . . . Clubhouse Setup

In case you are in charge of any set up or teardown before or after meetings or other events at our EGC clubhouse, here is the new thinking about where the tables and chairs should go.

1. Chairs – some at card tables in the carpeted room, most of them in the lecture area set up in theater style, and the rest folded up against the side wall in that room.

2. White tables – left up (ready to use) against the far wall in the front non carpeted room; the rest may be folded against the separating structure opposite the window wall.

3. Card tables – left up ready to use in the carpeted room.

## FLOWER SHOW TO BE HELD

Willamette District is sponsoring a Standard Flower Show Friday & Saturday, April 25 & 26, in Cottage Grove at the First Presbyterian Church (where the CGGC meets), 216 South 3<sup>rd</sup> Street – practically right down town.

The theme **“Rockin’ 50’s in the Garden”** might be a clue that all the class titles come from music titles of the 1950’s and theme staging will relate to items popular then as well. If you are willing to loan any items towards this décor contact Sherry Cossey or Jennifer Rabner.

Schedules will be available at our EGC meetings and also the District Meeting. Advanced entries are required for the Design Division by contacting Camille Noel by April 18. Juanita Manley & Phoebe Staples are the Design & Horticulture Consultants respectively. Call them if you aren't sure about something. Sjerru Cossey & Jennifer Rabner are chairing the Show.

## FLOWER ARRANGING CLASS



The next Flower Arranging Class will be March 20, 9:30 a.m., and the assignment the group decided upon last month is to choose one of the 3 table design classes from the April flower show schedule, **“Rockin’ 50’s in the Garden”**.

Those classes (p. 13 in the schedule) are:

Class 53. *Jambalaya* – an Exhibition Table Type 2 Design; (does not include a decorative unit, just plant material; space is 32” x 30”;

Class 54 *Mister Lonely* – a Capsule Table Design (setting for 1 with centerpiece, no tray; space is 32” x 30”;

Class 55 *For Your Precious Love* -- functional Table for 2; provide your own table not to exceed 36”

## Plant Sale Workers Needed

Sign-up sheets for garden club helpers at the May 11 Plant Fair will be out at our March and April club meetings.

Plan to put your name in a spot.

The Oregon Plant Fair will once again be held in Alton Baker Park together with the Avid Gardeners.

Set up will be Friday afternoon, May 9, and the sale will be Saturday, the 10<sup>th</sup>, 9 – 2.

Our potting party, and all of our individual plant division, starts, and seedlings provide us with product for the public to purchase and proudly take home to plant!



# What's Happening

## March

- 4-6 Flower Show School Course 1, at EGC
- 6-9 Lane County Home & Garden Show, Fairgrounds
- 7 EGC Board Meeting, 1:00 p.m.
- 17 OSFGC Board Meeting, Seaside
- 18 Master Gardener Seminar, *Bioremediation*
- 18 EGC Regular Meeting, Photography Contest
- 20 Flower Arranging Class
- 21 Willamette District Meeting, EGC Hosts
- 24 Shelton-McMurphey-Johnson House work party, 11 a.m.
- 27 Pant Nerd Night, EGC, 6:00 p.m.
- 29-30 State Flower Show, Portland EXPO  
Energy Trust Better Living Show

## April

- 1 EGC Board Meeting, 1:00 p.m.
- 3 LC Dahlia Society's Tuber Auction,  
Celeste Campbell Center, 7 p.m.
- 15 EGC Regular Meeting
- 17 Flower Arranging Class, 9:30 a.m.
- 26 Master Gardener's Spring Garden Fair
- 25-26 Rockin' 50's in the Garden,  
Willamette District Flower Show in Cottage Grove



**Eugene Garden Club  
Sherry Cossey  
87205 Willowdale  
Eugene, OR 97402-9133**

## **In the Garden – in March**

**Plant cool season crops such as peas, lettuce, cabbage, onions, kale & chard.**

**Divide hostas, daylilies, mums, peonies, dahlias late in the month.  
(Note: If weather is very cold, wait until April for dahlias; wait until you can see the tuber eyes well.)**

**Feed rhubarb, cane berries, evergreen shrubs & trees with manure or complete fertilizer.**

**Plant berry crops (strawberry, raspberry, blueberry, blackberry).**

**Prune gooseberries & currants and feed with manure or a complete fertilizer.**

**Move existing rose bushes; plant new ones by the 15<sup>th</sup>; fertilize with 1 cu. alfalfa meal per bush by end of month.**

**Spread compost over garden and landscape areas.**

**Plant gladioli.**

**Dethatch the lawn.**

