

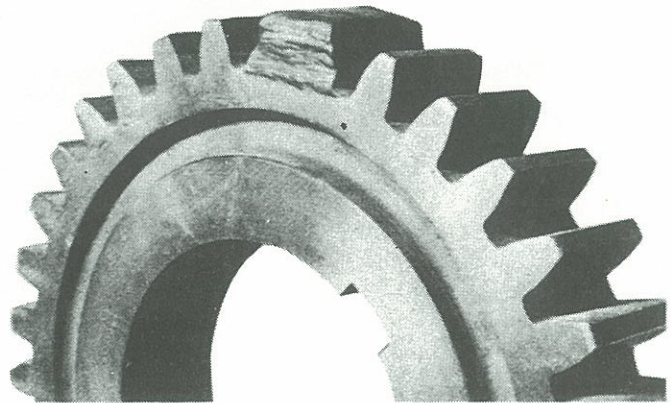


MINERALS-TECH[®] 600_{AC-DC}

“MACHINEABILITY PLUS”

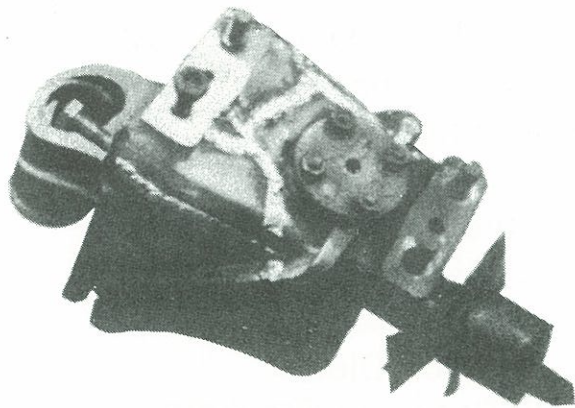
The finest alloy in the world for the welding of cast irons including:

Meehanite
Gray Iron
Ductile Iron
Malleable
Nodular
High Strength Cast Iron



EVEN STEEL TO CAST IRON!

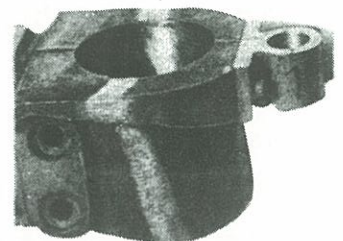
*Some of the Properties of **MINERALS-TECH[®] 600** are:*



61,500 PSI Tensile Strength
Highest Elongation (41%) For
Crack-free Ductile,
Machineable Deposits

Super Easy to Apply

No Pre-heat Necessary, Smooth, Steady Arc
Welds Pass on Pass Without Chipping Slag
Non-porous Dense Deposits, No Undercutting
Easy Slag Removal, Low Heat Input,
Weld Through Rusty, Dirty, Oily and Painted Surfaces!
Excellent Weld Appearance!

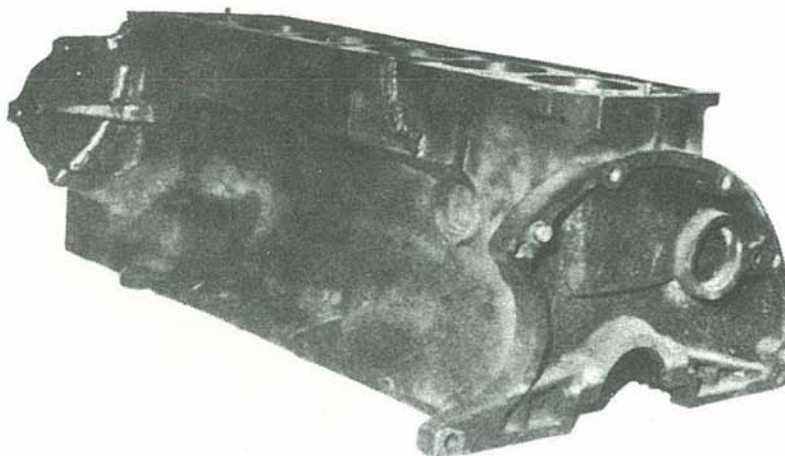




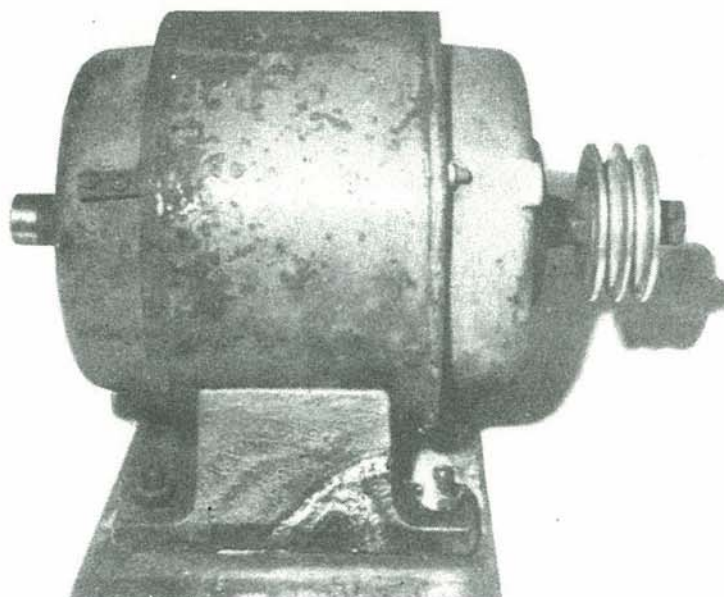
Typical Applications – MINERALS-TECH® 600

Some of the applications that MINERALS-TECH® 600 has been a proven time and money saver include:

Machine Bases
 Flapper Valves
 Crankcases
 Compressors
 Cylinder Heads
 Motor Blocks
 Cast to Monel
 Cast to Copper
 Cast to Stainless
 Foundry Defects
 Transmission Housings
 Building up of Missing Sections



Sprockets
 Manifolds
 Pulleys
 Pumps
 Cams
 Levers
 Vises



Gears, Worn or Broken
 Differential Housings
 Flywheel Covers
 Cast Iron Flanges
 Valve Bodies
 Impellers
 Housings
 Lathe Beds
 Gear Boxes
 Ingot Molds
 Cast Iron Dies
 Oil Pans and Brackets
 Reinforcing with Steel
 Punch Press Frames and Bases

Any place a high-strength CRACK FREE MACHINEABLE weld is required.

DIA:	IN	3/32	1/8	5/32	3/16	
	MM	2.5	3.25	4.0	4.85	
AMP:		35-70	60-115	110-150	130-170	

TIG alloy in 1/16, 3/32 & 1/8 dia. by 36" lengths

MINERALS TECHNOLOGY® CORP.
MINERALS-TECH® ALLOYS

4721 Paso Del Puma NE - Albuquerque NM 87111
PH: 505-238-0852 | FAX: 505-293-7593

Also Available in MINERALS-TECH® 600 T.I.G.

A NEW MEXICO WELDING ALLOYS COMPANY