

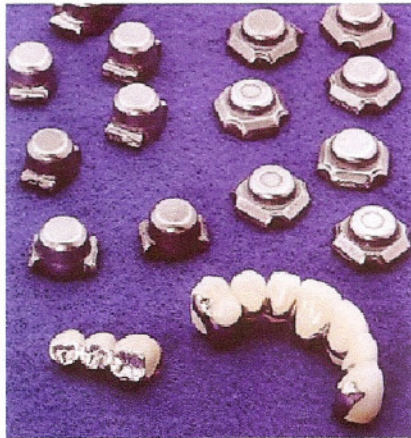
MAXIBOND, Be Free ALLOY



MAXIBOND™, Be Free, NP, T-10MXB

DENTICON INC., 1251 S. La Cienega Blvd., Los Angeles, CA 90035

This alloy is much softer and easier to work with. It has characteristics similar to semi-precious alloys, solders easy, grinds easy, exceptional porcelain bonding strength, consistent performance. The fluidity of this alloy makes casting very easy, has a lower casting temperature. Unlike most Beryllium free alloys, this alloy does not turn greenish and has a light oxide similar to alloys containing Ni, Cr, & Be.



Main Contents:
 Ni~63% -
 Cr~24% -
 Mo~11% -
 Si~2.0%

CUSTOM CAST CERAMIC ALLOY

Nickel-Chrome, Beryllium Free Dental casting Alloy

Casting Temp.	Burnout Temp.	Melting-Interval	T.C.E	Vickers Hardness	Specific Gravity	Tensile Strength	Elongation
2570F° 1410C°	1800F° 982C°	2375- 2475F° 1300-1357C°	14.1	200	8.2	580 N/mm2	13-15%

Porcelain compatibility to: All ceramics bonding alloy

This alloy with its excellent bonding strength is compatible with almost all porcelains available in the International market. MaxiBond is very similar to the alloys containing Beryllium, it is very easy to work with, solders easy, does not require any bonding agent.