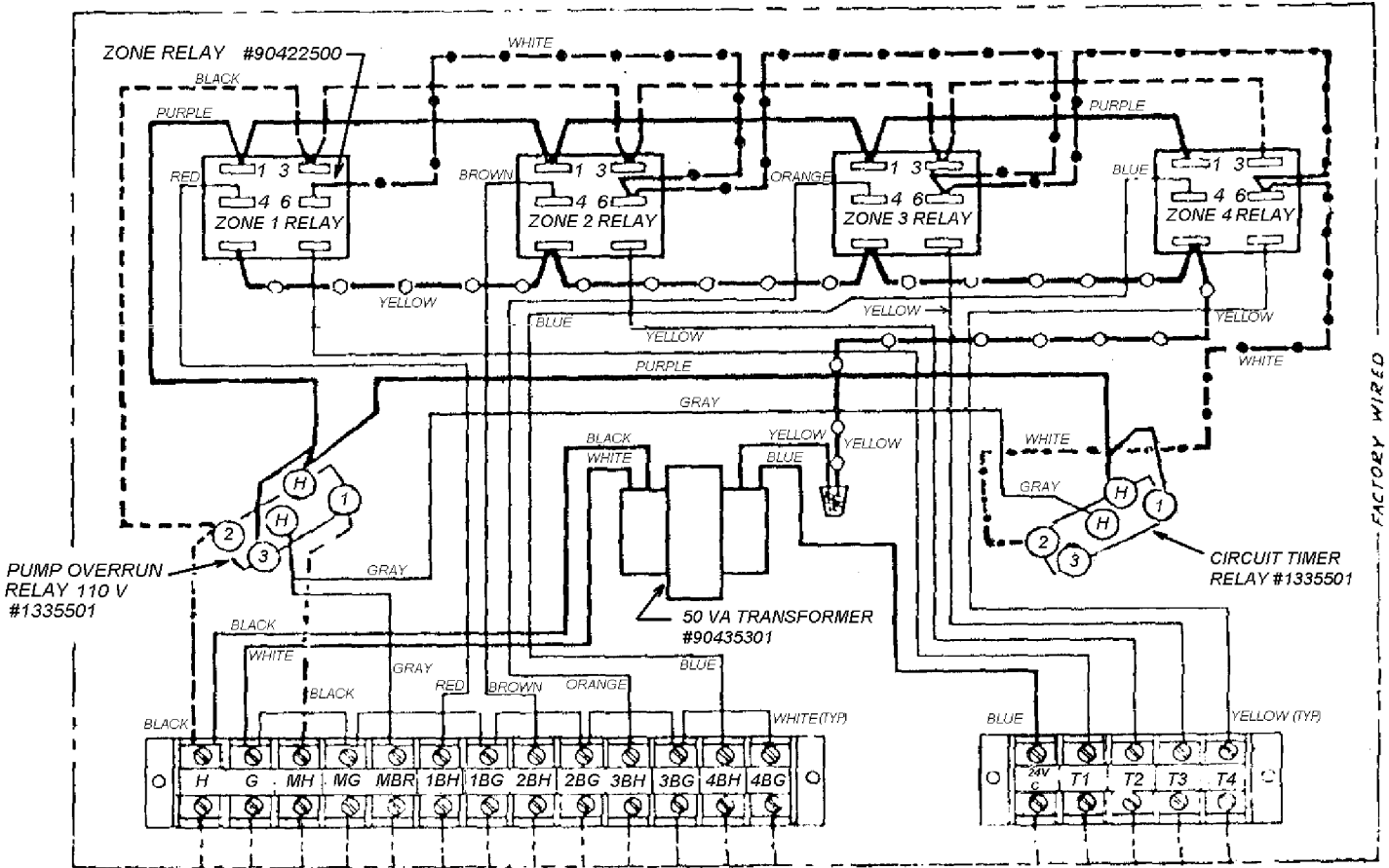


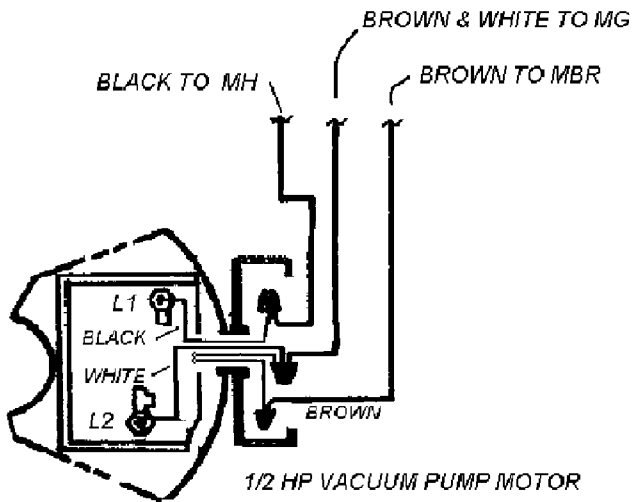
CO-RAY-VAC MODEL CRV 6-60 CONTROL PANEL

PN 13123 B

REV. 4-2000



THIS CONTROL PANEL WAS USED ON THE CRV6-60 SERIES BURNERS FROM 1972 TO 1979.
THE PUMP OVERRUN AND CIRCUIT TIMER RELAYS ARE 110 VOLT.



1/2 HP VACUUM PUMP MOTOR

WIRING OF MOTOR INTERLOCK
TO CONTROL PANEL