



# Etchings

February 2021

## 2020-2021 Society Officers

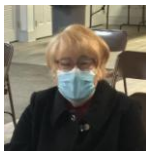
President - Jane Stacey Vice President - Keely Stockman  
Treasurer - Glenn Plauche Recording Secretary - Cynthia Brignac  
Corresponding Secretary - Carol LeBell



Photo on left is Astrid Muissett's Mardi Gras Hobnail setting with Fenton Topaz opalescent #3727 8 inch compote, Fenton Plum opalescent #3731 10 inch footed bowl, and Fenton Green opalescent #3727 8 inch compote and photo on right is Astrid Muissett's "House Float"



Carol LeBell's Mardi Gras table decoration that includes her Westmoreland lilac opalescent round hobnail butter dish, Imperial Dew Drop (hobnail) Vaseline opalescent butter dish, Federal Georgian Lovebird green round butter dish and beads in a Paden City Utopia compote



## Meeting Reminder

~~<~~

Wednesday

**Feb 10, 2021**

~~<~~

Meeting Begins 7:30pm

Doors Open 7:00pm

## Program:

**Imperial Glass**

## Show 'n Tell:

**September is**

Your favorite

**Glass Animal**

## Meeting Rules:

We will continue with the new set up, masks required, hand sanitizer available, wipes available, bottled water only available, no door prize, No "for sale" glass table, and no refreshments.

**Possibly doing 50/50 tickets and definitely doing donations to Angel's Place in basket on officer's table.**

**Show & Tell can be placed on officer's table while describing. (But not on Program table.)**

(Meeting Photos by Bonnie Theard)

## CCDGS Website

[www.crescentcityglass.org](http://www.crescentcityglass.org)

Check it out for meeting and event information.

# Happy Birthday

**Gloria Broadbent – 02/06**

**Cindy Faison – 02/03**

~~~~~

## January Meeting Highlights

Collected \$47 dollars for Angel's Place.

18 members in attendance.

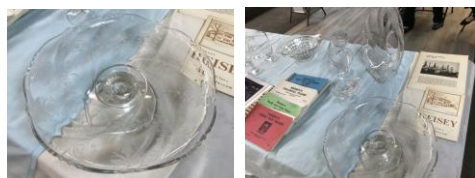
The CCDGS March Show has officially been **canceled** for 2021 due to COVID19 restrictions at the Pontchatrain Center.



On left: Keely Stockman with an original Heisey framed ad she suspects came from a jewelry store.  
On right: Heisey Tangerine stemware.



On left: New Era 3 oz wine, 3 1/2 oz high cocktail, 8 oz footed soda (water glass), 10 oz footed low (iced tea glass) On right: Heisey Rose stemmed bonbon, creamer/sugar, 7" salad plate, 6" square butter dish, salt/pepper, candlesticks with original labels.



On left: Heisey Orchid footed platter with Heisey mark. On right: Orchid flared jelly, large bowl at top of photo with footed platter.

## January Meeting Program

Presented by Keely Stockman, Astrid Muisset, and Carol LeBell

## Heisey Glassware

Program on Heisey Glass with a brief history of company plus examples of Heisey New Era #4044, Heisey Rose Etch #515 on Lancaster blank #1819, Orchid etch, Plantation #1567, and Victorian #1425.

Heisey was started by Augustus H Heisey in 1896, mostly with glass pressed into molds as imitations of the more costly cut glass patterns. The factory was located in Newark, Ohio. The official trademark is an H within a diamond.

They progressed to finer quality glassware and stemware and included etchings. In 1897 they introduced Vaseline (Canary) and then in 1899 Opal. Their "Color Era" was 1925-38. Cambridge and Fostoria far out-produced Heisey in colored ware but Heisey's quality of glass gave them their enduring image of being a superior product.

Cool names for their colors include "Moongleam" green, "Flamingo Pink," "marigold," "Sahara" yellow, "Hawthorne" lavender, and "Alexandrite" orchid. Later came richer, intense colors like "Tangerine" re-orange, "Steigel Blue" cobalt, amber, and their blue-green "Zircon".

During the 40s and 50s the famous Heisey figurines were made and colored glass appeared in the later years. Increasing business costs, foreign competition, and other problems led to closure December 1957. The Imperial Glass Corp of OH bought the existing molds in 1958. They only used a few molds, mostly what was being produced when company closed. They continued to use the Heisey mark up until 1968.

*Interesting note:* Heisey animals were prominently featured in the advertising for the movie version of The Glass Menagerie, starring Jane Wyman, Gertrude Lawrence and Kirk Douglas, seen only in glimpses in the movie.



From left: Plantation salver/stemmed platter with rum well, Victorian 10 1/2" Floral Bowl, Victorian 1 ball goblet.

Keely Stockman also shared her extensive library of Heisey books. You can see them pictured on the table around the beautiful glassware.



## Upcoming Glass Events!

### **February 5-7, 2021**

#### **Ponchatoula Antique Trade Days**

100 W. Pine St, Ponchatoula, LA, LA 70454  
9am to 5pm FREE

Located at the Downtown Commuter Parking lot  
in historic downtown Ponchatoula, LA

985-351-4029

[www.ponchatoulaantiquetradedays.com](http://www.ponchatoulaantiquetradedays.com)

### **February 6-7, 2021**

#### **South Florida Depression Glass Club**

47th Vintage American Glass & Pottery Show and Sale  
Lauderhill Performing Arts Center

3800 NW 11th Place  
Lauderhill, FL 33313

<https://www.sfdgc.com/>

[Showinfo@sfdgc.com](mailto:Showinfo@sfdgc.com)

### **February 13-14, 2021**

#### **Clearwater Elegant & Depression Glass Show & Sale \*\* CANCELLED \*\***

Clearwater, FL  
860-614-7133

### **February 20-21, 2021**

#### **The Houston Glass Show & Sale \*\* CANCELLED \*\***

plus The Best Little Antique Show in Texas

Rosenberg, TX

713-410-4780

<http://www.maxmillerantiques.com>

### **March 6-7, 2021**

#### **Three Rivers Depression Era Glass Society \*\* CANCELLED \*\***

44th Annual Show and Sale

New Kensington, PA 15068

412-217-2083

[leasure@earthlink.net](mailto:leasure@earthlink.net)

### **March 13-14, 2021**

#### **45th Annual Depression Glass and Vintage Collectibles Show and Sale**

**\*\* CANCELLED \*\***

Kenner (New Orleans), LA 70065

504-338-6083

[www.crescentcityglass.org](http://www.crescentcityglass.org)

### **March 13-14, 2021**

#### **20-30-40 Glass Society of Illinois \*\* CANCELLED \*\***

#### **49th Annual Glass Show & Sale**

Northlake, IL 60164

504-392-5093 or 504-392-5887

<http://20-30-40glassociety.org>

[Brugioni@ameritech.net](mailto:Brugioni@ameritech.net)



## **January Show and Tell**



Jane Stacy with Heisey Salt Cellar from Madeline Willoughby.



Alice Lowe with Heisey Cruets: Tutor #411 or 412 (1925), Empress #1401 (1930-1938), Saturn #1405 (1937-1957), Narrow Flute with rim #473 (1909-1939), Pleat & Panel #1170 (1925-1937). She has a total of about 40 cruets.



Carole Martines with Heisey Minuet #503 that she purchased at the NDGA Show Auction table.

Not pictured: Ronnie Broadbent's 3 glasses. #439 Pied Piper (1922-1942) from Heisey Museum, #440 Fontenac (1922-1942) from Absolute Antiques, and #413 Renaissance (1918-1939)

Not pictured: Carol LeBell's Heisey Crucifix that belonged to her grandmother.

## Pattern of the Month: Jamestown by Bonnie Theard

Note: Jamestown is the site of the first permanent English settlement in North America in 1607. It was established along the James River in the colony of Virginia. Jamestown Settlement and the American Revolution Museum at Yorktown are living history museums that include recreations of an Indian village and a 1610 fort.

When you look at the Jamestown pattern made by Fostoria Glass Co. from 1958 to 1982, you can almost visualize a table set in the early days of America. There is a definite colonial-era look to the pieces, especially the numerous footed goblets and tumblers.



The pattern was produced in eight colors: amber, amethyst, blue, brown, crystal, green, pink, and red/ruby. Club member Carol LeBell, who collects Jamestown, said, "The amber and green are pretty easy to find. Amethyst is somewhat rare and costs more. Red is stunning and stores bring that out during the build-up to the holidays." She has seen pink and blue but said those colors are "not as showy as pink and blue in more decorative patterns."



There are 32 pieces to collect including the goblets and tumblers, salt and pepper shakers, footed sugar and creamer, footed sherbet in two sizes, cake plate, covered butter, muffin tray, torte plate, covered sauce dish, covered jelly dish, celery and pickle dishes, salad bowl, and a four-piece salad set with wood fork and spoon.

Surprisingly, there is only one 8-inch plate. The pieces have a sturdy look and feature a wide swirl design. The most expensive pieces are the salver, the pitcher, and the salad set.

According to Gene Florence's Collectible Glassware from the 40s, 50s, and 60s, 6<sup>th</sup> Edition, "Fostoria did not manufacture service items for the same protracted span as the stemware line; that leaves both collectors and dealers scrounging for serving pieces. Not every piece was made in each color. You might find some bargains in amethyst Jamestown since it sometimes is mistaken for Moroccan amethyst."



He also cautioned: "Ruby stemware has once again been made with little distinction between the old and newly made items."

*Photos from Carol LeBell's collection (from top): 1) Green 12 oz iced tea tumbler, Amber 9 oz goblet, Green 48 oz. footed pitcher with ice lip. 2) Green Salt/Pepper shakers with chrome tops, Green covered stick butter dish, Amber salt shaker with chrome top. 3) Amber 8" plate on Royal Jackson "Autumn" dinner plate, Green Salt/Pepper shakers, single Amber 8" plate.*