

Since 1948 Exploring the Wonderful World of Beekeeping Together

The Bee Buzzer

Monthly Publication of the

Northeastern Kansas Beekeepers' Association

VOLUME 76, NUMBER 2

EDITOR: TIM MARSHALL

February 2024

General Meeting

Monday, February 19th, 2024 (7:00 p.m.)

(Back to in-person; looking forward to seeing and talking to you)

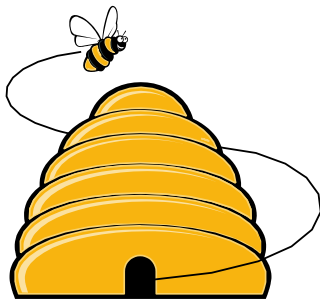
Douglas County Fairgrounds Bldg. 21N

2110 Harper St., Lawrence KS

Main Program: Why Bees Die & Post Mortem by Steve and Becky Tipton. Steve and Becky are both Master Beekeepers and have over 30 years of experience keeping bees. Together they run Country Creek Honey and enjoy sharing their knowledge and experiences.

Beelines

By President Cheryl Burkhead



I had the pleasure of attending my first national beekeeping conference in early January. The North American Honey Bee Expo, NAHBE, was held in Louisville, KY at the Kentucky Expo Center. I have never been to a national convention, but Wow! What an experience! I have listened to a few podcasts since returning and they were comparing it to Apimondia. Several NEKBA members were in attendance. Some local businesses: Heartland Honey, Anthony's, and Beekeepers.com, were there as vendors.

The venue had a great mix of speakers and offered the latest in beekeeping research. The vendor area was huge and I might have brought home a few treasures for my own operation. I finally was able to meet several individuals that I have had correspondence with over the years, Dr. Larry Connor, and Eugene Makovec, the editor of *American Bee Journal*. I had additional conversations with a number of speakers as they roamed through the huge vendor hall. Thank you to Greg Rogers and Dr. Cameron Jack for taking the time to visit with me regarding your OA presentations for mite management. Of special interest to me was Greg Rogers' North Carolina study on extended-release oxalic acid. His results were quite promising. Phoebe Snyder presented a new pheromone-based tool called "UBeeO", designed to assist beekeepers in selectively breeding for mite and disease resistance. Premier Bee Products unveiled their new "Propola hive". Its design, with roughened interior and grooved interior walls, is aimed to encourage propolis collection and restore a propolis envelope to assist colony health.

If you like honey shows, this one's for you! 1161 exhibits, 339 exhibitors, and 242 black jar entries! An army of judges took more than a day to go through all the entries and award the best. There were some beautiful and unique entries. The array of multicolored honey in queenline glass jars was quite stunning.

We've had some extreme cold weather for several weeks in January. I always field several calls from concerned beekeepers during these periods seeking reassurance that their colonies will survive. Bees are actually pretty resilient provided their mite count is low, their cluster size is large enough, they have adequate resources, and a dry home. It's always encouraging to see one's colony actively taking cleansing flights after a prolonged spell of brutal conditions. Once the weather warms a bit and the bees are flying, I will be cleaning hive entrances, checking weights, and feeding if necessary.

Our Year 2 & Bee-Yond class for 2024 is in the books. Our Bee-ginning Bee Class is February 24 & 25, 2024. Many of our members work hard each year to provide you with some great instruction and foundation for your beekeeping endeavors. Knowledge is power and I encourage you to attend the courses that we offer. We also provide vendors at these events for your convenience so please pay them a visit for your beekeeping needs.

2024 Meeting Dates:



- February 19, 2024 Monthly Meeting (Bldg. 21)
- February 24&25, 2024 Beginning Beekeeping Class
- March 18, 2024 Monthly Meeting (Bldg. 21)
- March 23, 2024 Beginning Beekeeping Class (condensed offering)
- June 1, 2024 Fun Day!!



Beekeeping Classes



The *Beginning Beekeeping* class will be taking place on Saturday, February 24th and Sunday, February 25th, 2-day class in Lawrence, and then there will be a one day *Beginning Beekeeping* class in Gardner this year. The class schedules and locations are at the end of the newsletter, so be sure to sign up and we look forward to seeing you there!

The cost for each class is \$55.00 per person and each participant will receive a notebook filled with lots of useful information along with slides from each presenter with space for taking notes. You may see the complete program for each class by going to the Northeastern Kansas Beekeepers website at [HOME \(nekba.org\)](http://HOME(nekba.org)). You may register and pay for the classes online. If you wish to pay with check, you may use the postal service and mail to NEKBA, Attn: Robert Burns, Treasurer, 7601 W. 54th Terr., Shawnee Mission, KS 66202. Please specify which class you are attending or you may go online and print the registration form and include it with your check.

We have many knowledgeable and experienced beekeepers who are freely giving of their time to get you started off on the right foot as a new beekeeper. Come with questions and the expectation of gaining beekeeping knowledge. If you have any questions; call, text, or email Kristi Sanderson at 913-768-4961. Email - Sandersonk09@gmail.com [HOME \(nekba.org\)](http://HOME(nekba.org)) for additional information and to register.

Kristi Sanderson, Special Events Coordinator



Ol' Bee Gal

Steve and I traveled to the Pacific Northwest this last week and had an afternoon to peruse the Pike Place Market in Seattle. Wowza! What an amazing warren of booths, shops, and stands. The fruit and veggie stands were beautiful and exotic. The fish mongers were laughing, throwing fish for our entertainment, and loud (I brought home some amazing smoked salmon). The variety of wares boggled the mind. We were there in an "off" time and yet, the venue was crowded. We saw 3 separate honey vendors. Only one claimed to actually be a beekeeper and the others were merely working the honey booth. They sold almost exclusively small, gift-size bottles of honey with prices high enough to make me blush at the thought of asking that for my honey! I almost brought home some honey labeled as raspberry honey. This was not an infused product but supposedly made from raspberry nectar. The bottle was 4 ounces, and I was afraid it might be confiscated as I passed through the TSA check point. Losing the \$12 jar of gold would have made me too sad so I left it with the vendor. While traveling, we always look for honey and beekeepers. We are a small group and don't want

to miss an opportunity to gather new ideas and share camaraderie. FYI, a 12 oz. block of comb honey was selling for \$30.

This month is our beginning beekeeping class. I hope many of you will attend and perhaps bring a bee buddy along with you. Even when I attend beginning classes, I often learn a new bit of information. Beekeeping is always changing, and we beekeepers are challenged to keep up. I know Cheryl Burkhead will have some really new information about keeping our hives healthy, which is the ultimate goal of us all!

One of our newest educational additions is the Open Teaching Apiaries. Several of us are involved in this project that is mostly funded through Great Plains Master Beekeeping Program. GPMB sounds like it is only for those of us wanting to become serious bee scholars. Not correct. GPMB starts offering program material for those at the interest only level and progresses through Apprentice, Journeyman, and then Master Beekeeper. Enrollment is FREE! Check out the program at: <https://gpmb.unl.edu/>.

Our Open Teaching Apiaries offers folks a chance to get into the hive with a guided instructor. We always cover topics including, lighting the smoker, hive safety, approaching the hive, safely removing frames, and assessing hive health—EVERY TIME! If hive inspections are an area in which you feel unsure, our open apiaries are a great place to start. The NEKBA Open Apiary schedule can be followed in The Buzzer calendar section or on our web page.

Steve and I also teach a beginning beekeeping class in Topeka. This is our 12th or 13th year. We also teach at Shawnee North Community Center on the 3rd Wednesday of the month (usually). We will begin on Feb. 21st this year (6:30-8:00 pm). Our curriculum follows the beekeeping year ending in October with wintertime beekeeping. THE CLASS IS FREE! Please register with Shawnee County Parks and Rec. We strongly suggest that new beekeepers attend the NEKBA class—it's a full, in-depth, beginning class. Then, join us each month for a refresher on what you should focus on this month in beekeeping. Some of our students include Cheryl, Bruce and Susan, and Jay. These folks are all very successful beekeepers, and it brings joy to my heart that I had a small part in getting them started! If you'd like additional information on our class, Open Apiary, or any of the NEKBA programs (or just want to chat about bees), call, email, message, or text. Don't forget the KHPA meeting in Salina, March 8-9. We have a terrific program planned! **Becky Tipton**

SUBSCRIBE TO A MONTHLY BEE MAGAZINE.

STAY INFORMED.

[Bee Culture Magazine \(link\)](#)

[American Bee Journal \(link\)](#)

Use the links to subscribe directly...annual subscription rates under \$6 per month for both! This is fantastic information right at your fingertips. As part of your beekeeping experience, it's important to be up to date with the trends in bee biology, honey processing, the industry, and much more!



ASK QUINBY & REMI

Dear Quinby and Remi: I just want to learn about bees so much! Any ideas how I can achieve that? **Quinby and Remi answer:** You can still catch one or both beginning bee classes this year!! There is a 2-day class in February and a one-day class in March, the March class will be in Gardner.

Dear Quinby and Remi: My hive died what should do? And why did it die?

Quinby and Remi answer: The first thing to do is to brush out the dead bees so that the frames don't get moldy. If there is honey in the hive and you have other hives, stack those hive bodies on top of any other hives under the lid!

Quinby and Remi would love to answer your questions. Contact them by emailing their owner at heartlandhoneyks@gmail.com.

Funday!! (Insert happy dance here!!)

The Funday committee is working on some exciting new things for this year! Mark your calendars and "Save the Date" for Saturday, June 1st. The Funday Expo will be held at the Douglas County Fairgrounds, 2120 Harper, Lawrence, KS. The one-day beekeeping expo will be one of the highlights of your beekeeping career. You will celebrate with great food, fresh-baked breads with honey butter and creamed honey, a delicious hot lunch and homemade honey ice cream! We are also planning a BBQ dinner (for an extra fee) where you will get to mingle with our guest speakers. If you purchase one of our sponsorships at the Queen or Drone Level, you will get to sit at a table with one of them!

Guest speakers will include **Blake Shook** from Texas, a commercial beekeeper and owner of The Bee Supply; Dr. Jennifer Tsuruda from the University of Tennessee; Dr. Judy Wu-Smart from the University of Nebraska, Lincoln; Dr. Autumn Smart from the University of Nebraska, Lincoln; Rogan Tokach from Auburn University (currently in Thailand studying the *Tropilaelaps* mite; Eugene Makovec, editor of the American Bee Journal; and many others plus our own local talent. We'll have our swarm demo, value-added presentations, and live hives to go through with an experienced beekeeper. Hives with problems will be present so you can diagnose issues.

Vendors! We'll have a lot of vendors. Hill Co will be coming! Here is a discount link for the Funday, <https://hillcobees.com/discount/NEKBA>. You can also use the code "NEKBA" at checkout will also work. This is only for pre-orders that HillCo will bring. This does not include shipping; you will need to select "pickup" when checking out. Other vendors who have been confirmed are Dadant and Sons and Beekeepers.com. We'll keep you updated on other vendors as they confirm.

Funday Sponsorships Offered!

This year for our Funday, Saturday, June 1st, 2024, we are excited to offer a new NEKBA member sponsorship program. Since we have so many generous members, we decided to offer you a chance to support the club. We are asking for generous donors to help supplement the cost of the Funday.

If you have a business that you would like to put on our sponsor board and in our Funday Conference Program, we would love to do that. If you do not have a business but would like to have your name listed, we would like to do that as well, or you could choose to be anonymous. Please note that at the Drone and Queen Levels you can sit with one or more of our guest speakers at the Saturday night dinner. If you would like to have a vendor booth, we have a different sponsorship program for vendors.

Member Sponsorships:

Queen Level \$1000 Includes 4 registrations and lunch and dinner. Dinner will include sitting at a table with one of our guest speakers! Plus 20 Quilt raffle tickets.

Drone Level \$500 Includes 3 registrations and lunch and dinner. Dinner will include sitting at a table with one of our guest speakers! Plus 15 Quilt raffle tickets.

Worker Level \$250 Includes 2 registrations and lunch and dinner plus 10 Quilt raffle tickets.

Honey Level \$150 Includes 1 registration and lunch and dinner plus 5 Quilt raffle tickets.

If you have any questions or want to sign up as a sponsor, please call, text, or email me, Joli Winer at 913-593-3562 or heartlandhoneyks@gmail.com.

Joli Winer, 2024 Funday Coordinator



The NEKBA Beeyard

You are invited to help us put woodware equipment together for six new hives for the Open Apiary! We will be getting together at Matthew Brandes shop starting at 1pm on Sunday, February 18th. We have 6 hives to put together, no frames- we've ordered assembled frames. Matthew's address is, 4741 Highway K 68, Wellsville, KS 66092

Please let us know if you are coming so that we know who to expect. Call, text, or email Joli at 913-593-3562 or email heartlandhoneyks@gmail.com.

Tips for February

- Don't forget Valentine's Day! Give your bee-bies something special!!
- Start planning for this spring, do you want to do splits?
- Clean out your smoker and find your suit and inspection equipment.
- Pollen will be coming out this month; the bees will really use honey quickly rearing brood.
- Feeding syrup is typically 2:1 this time of year, switch to 1:1 in March.
- Lots of feed holes help a hive put on weight, only a couple feed holes will stimulate the hive.
- Colony weight and goals will determine how much to feed or how to feed, stimulating can lead to early swarms.
- These next few months plan on quick checks to your hives weekly or bi-weekly.
- Depending on weather, later this month pulling a frame and replacing it quickly can be okay. Some might move a honey frame closer to center.
- Read up on equalizing hives and/or swarming to prepare for March.



Military/Veterans Apprenticeship Program

I am Buck Bradley. I will be continuing the excellent work that Andy Nowachek and his team have done over the last few years. I was born and raised in Ottawa, Kansas.

After a 21-year career in the Marine Corps, I recently returned home from North Carolina and am now settled in the Baldwin City area. I have been keeping bees for

the last several years and had up to 25 hives before moving back home.

In following newsletters, I will share more information on the NEKBA Military/Veterans Apprenticeship program and the connection between veterans and beekeeping that dates back to the end of World War I.

I hope everyone had a good holiday season and that you have your bee equipment ready for Spring.

Buck Bradley, Military/Veteran Appr. Liaison

Honey Plants

For the last eight or nine years I have been recording blooming dates. I have noticed that they vary from year to year. The dates of the first blooms can vary as much as two weeks from one year to the next. These dates can also vary from location to location. Urban areas tend to be warmer and can produce blooms as much as a week or two ahead of rural areas.

The buds of Witch-hazel are present, but tightly closed during some of our harshest winter weather. It is the first to bloom in my area yet was surprised to see my bees collecting pollen from it on February 2nd. The temperature reached the upper 60's. While not a great nectar or pollen source, the bees will take advantage of it because it is the only thing blooming this early. Its buds produce orange-yellow pollen. You might have this Missouri native in your area. I purchased mine years ago and it is growing outside next to my house.



There are many early flowering bulbs worth mentioning. Crocus is the first bulb to bloom around late February or early March. Planting Crocus close to the apiary will enable the bees to collect the bright orange pollen and nectar without getting too chilled to return to the hive. Other bulbs that bees will work are Winter Aconite, Snowdrops, Siberian Squill, Hyacinths, and the petite Grape Hyacinth.

Silver Maple trees are common in our area, they are frequently found in urban and suburban locations. It will be the first to produce blooms in abundance. Silver Maples can bloom as early as March 1, but mid-March is a typical bloom time for our area. It is a particularly good nectar source and produces a greenish pollen.

The third week of March, Red Maples will begin blooming. Red Maples are a good source of nectar and pollen. Look for a yellow pollen color in pollen baskets as foragers return to the hive. Norway Maples, also a good food source, will begin blooming after Red Maples.

Willows are also an early source of pollen. Honey bees will collect nectar as well, but pollen is the main attraction. Pussy Willows (*Salix Caprea*) can begin blooming in late February, but their male catkins typically do not start producing a fragrant, yellow pollen until March 1st or later. Pussy Willows are shrubs. You can buy them at most big box stores and garden centers. They prefer a moist location.

There are other willows that are native to Kansas. The Sandbar and Black Willows grow much larger than Pussy Willows. The Kansas Forest Service recommends Sandbar and Black Willows for erosion control, especially along creek beds. They recommend bare root or cuttings for this use. Weeping Willow trees are also another source of nectar and pollen. They typically bloom later in March.

For those new to beekeeping, nectar is a sweet substance secreted by glands or nectaries in flowers. Honey bees process this carbohydrate to produce honey. Honey becomes a food source for adult bees. Nurse bees will feed bee bread to the larvae. Bee bread is a mixture of honey and pollen. Pollen is a source of protein the bees will pack into cells near the brood area. While honey bees are very selective about choosing blooms that produce the highest sugar content, they are not as fussy about pollen. In the absence of pollen, beekeepers might see bees collecting anything that resembles pollen. Fortunately, we live in a pollen rich area, and it is naturally available in abundance. **Jo Patrick, Honey Plants Chairman**



The Kansas Honey Producers, Third Thursday, Making More \$\$\$ from Your Hive, Making and Selling Nucs- presented by Kristi Sanderson Thursday, February 15th, 7 pm Central.

The Kansas Honey Producers Association- 3rd Thursday, Making More Money From your Hives, is at 7pm CST, Thursday, February 15th 2024.

Kristi has been making and selling nucs for many years and she will share her tips and tricks with us.

To register for the meeting and to get the link go to our website at www.kansashoneyproducers.org and click on the Making More \$\$\$ button-it will send you to a zoom program to register and you will immediately get the zoom link in your email. If you have registered before you still may have to register again to get the link.

Upcoming programs:

February 15, 2024, 7pm Central- Making and Selling Nucs, presented by Kristi Sanderson

March 21, 2024, 7pm Central – Producing, Selling and Marketing Comb Honey, Shelby Kittle presents.

April 18, 2024, 7pm Central – Bee Huts presented by Joel Lanz

May 16, 2024, 7pm Central - Collecting Pollen and Preparing it for Sale, presented by John Speckman

If you have something that you would like to share with the group or have an idea for a future program, please call or text Joli at 913-593-3562 or email heartlandhoneyks@gmail.com.

Graphic Artist/Marketing Person Wanted:

A volunteer to help with the Funday Expo advertising is needed. We are looking for a volunteer who is creative and has some Graphic Artist experience- or is willing to learn. We need someone to make us some “ads” that we can put on Facebook and post on our NEKBA website. I’m thinking of speaker profiles to put out there and teasers about the Funday. We really want to promote this great educational activity. We also will have vendors who will be offering discounts, and we want to promote that, too. We will want a Funday Expo flyer made as soon as possible. Please call or text Joli at 913-593-3562 or email heartlandhoneyks@gmail.com if this volunteer job interests you.

Quilt Raffle



This year we again have a beautiful quilt for our quilt raffle. This quilt was donated by Jenny Latendresse, owner of the L'il Red Hen Quilt Shop at 7 South Agate St., Paola, KS. She has donated several quilts over the years to be used to help fund both the Youth Scholarship program and our Apprenticeship for Veterans and Active-Duty Service members. Tickets are \$5 each or 5 for \$20. The drawing will be held at our Funday Expo on Saturday, June 1st. Tickets will be available at all of our in-person events and meetings plus at the Funday.

MO HIVES Kansas City Urban Beekeeping

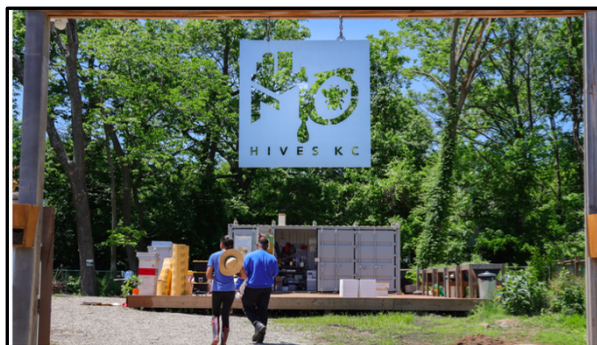


MO Hives established a low-cost, long-term lease arrangement with Community Builders - KC for six lots that make up their Wabash Avenue apiary site (between 50th and 51st streets on Wabash) in Kansas City, Missouri. These lots have been vacant for nearly a decade and were subject to illegal dumping.

As part of developing a sustainable urban bee farm habitat for the honeybees, MO Hives began collecting rainwater from the roof of the Blue Hills Community Center, re-using it for garden beds and honeybees. Dr. Marion Pierson had already been thinking about developing a program in Kansas City modeled after one in Detroit called “Detroit Hives”, which began in 2016. Pierson was especially inspired by the organization's beekeeping and conservation.

Together, Brian Reeves and Dr. Pierson established Mo Hives KC as a nonprofit and set up a base of operations in an empty field on Wabash Avenue in Blue Hills with the mission of engaging with and educating residents about beekeeping and conservation. For more information, visit: <https://www.mohives.org>

Jessica Popp, contributing author, Midwestern Beekeepers Assn





Northeastern Beekeepers Association

Beginning Beekeeping Class

February 24, 25 2024

Douglas County Fairgrounds, Flory Building

February 24 Saturday (vendors only this day)

8:30-8:50	Registration
8:50-9:00	Introduction Kristi Sanderson
9:00-9:30	Equipment Marti Hansen names of bee hive parts
9:35-10:15	Honey Bee Biology Becky Tipton basic biology that will aid in making good decisions
10:20-10:35	Break/vendor time
10:40-11:25	Starting with Bees Kristi Sanderson ways to acquire bees
11:30-1:00	Lunch/vendor time (on your own)
1:05-1:50	Summer Beekeeping Jo Patrick what to look for in hive and when to add supers
1:55-2:40	Fall Management Steve Tipton when it starts and what to do
2:45-3:00	Break/vendor time
3:05-3:40	Beehive Inspections Matthew Brandes how to go through a hive
3:45-4:30	Q & A

February 25 Sunday

1:00-1:10	Welcome (The Resources in your Book) Kristi Sanderson
1:10-1:30	Location, Location, Location Elaine Ellenz where to set up hives
1:35-2:20	Varroa Mites Joli Winer keeping them under control
2:25-2:40	Break
2:45-3:15	Extracting Basics Bob Burns removing supers, moisture content
3:20-4:05	Keeping a Healthy Hive Cheryl Burkhead
4:05-4:20	Q & A
4:20-4:30	More Learning Opportunities with NEKBA

*Topics or presenters subject to change



Beginning Beekeeping Class
March 23, 2024
Gardner Grange Hall
(Johnson County Fairgrounds)
136 E Washington St
Gardner, KS 66030

March 23 Saturday

8:00-8:20	Registration
8:20-8:30	Introduction Welcome Kristi Sanderson
8:30-9:00	Equipment Kristi Sanderson
9:05-10:05	Honey Bee Biology Joli Winer
10:10-10:25	Break
10:30-11:30	Starting Right with Bees Kristi Sanderson
11:35-12:20	Hive Inspections Matthew Brandes
12:20-1:20	Lunch (on your own)
1:25-2:25	Beekeeping through the Year Joli Winer
2:25-2:40	Break
2:45-3:30	Diseases and Pests Matthew Brandes

*Topics or presenters subject to change

NORTHEASTERN KANSAS BEEKEEPERS' 2024 MEMBERSHIP APPLICATION

NAME _____
ADDRESS _____
CITY _____ STATE _____ ZIP+4 _____
PHONE _____ E-mail Address for the newsletter _____

Membership Northeastern KS Beekeepers per year (July-Dec. \$12.50)	\$25.00	_____
Additional family members wanting voting rights \$1.00 per person	\$1.00	_____
Additional family member's name _____ (Youth Membership (18 years of age or under)	\$12.50	_____
Membership for Kansas Honey Producers Association	\$15.00	_____
American Bee Journal (<u>discounted rate through association</u>)	1 year \$29.75	_____
Bee Culture Magazine (or subscribe online at www.BeeCulture.com)	1 year \$34.00	_____
Scholarship / Military/Veteran's Appr. Donation		_____
	Total	_____

You may join, re-new, register, donate and pay online at www.nekba.org

Make checks payable to: NEKBA or Northeastern Kansas Beekeepers Assn.

Mail to: Robert Burns, 7601 W 54th Terr., Shawnee Mission, KS 66202 ph. 913-481-3504, rburnshoney@gmail.com

MENTORING-SWEET PRAIRIE HONEY

Need help with your hives? -Spring inspections, installing packages, making splits, queen evaluation, diagnosis of pests and diseases, mite monitoring and treatment, etc. I can help you with your beekeeping needs! I am a certified master beekeeper with 30+ years of beekeeping experience. I will leave you with a written course of action after our session at your hives. Call or text 913-768-4961 or email Kristi Sanderson at sandersonk09@gmail.com for pricing and appointment times.

BEEKEEPERS.COM

Beekeepers.com (Jordy's Honey Company) in Lenexa, KS. Beekeepers.com is your only local full-service beekeeping store. We carry a full line of Beekeeping Supplies, Protective Clothing, Bottles, Bee Packages, Nucs and Queens. Visit our website Beekeepers.com, to view our entire line of beekeeping supplies. You can also shop in-person at our store in Lenexa. We ship queens directly to YOU! Order at QueenBees.com. Queens available March - October. Our hours are Monday-Friday 9:00-4:00, Saturday 9:00-12:00. You can find our honey at The Overland Park Farmers Market. **Robert Hughes**, 14054 W 107th St, Lenexa, KS 66215, 913-681-5777 or email Info@Beekeepers.com.

COTTIN'S HARDWARE & RENTAL

Cottin's stocks a full line of beekeeping equipment year-round including items manufactured by Harvest Lane Honey, Little Giant, and Bug Baffler. Products include hives, supers, frames, foundations, extractors, tools, and protective apparel. We also stock a full line of Home Brewing Mead Making supplies. Located in Lawrence, KS at 1832 Massachusetts Street (South of Dillon's). We are open Monday - Friday 7:30 am - 6:00 pm, Saturday 8:00 am - 5:00 pm, and Sunday 10:00 am - 5:00 pm. You can follow us on [Facebook](#), [Instagram](#) and Twitter. Call us at 785-843-2981 or email us at hardware@sunflower.com.

CB'S HONEY

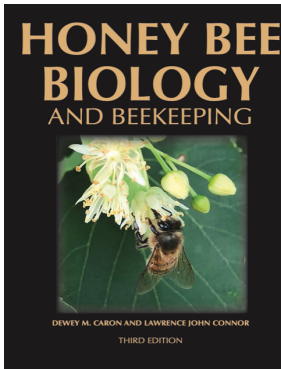
CB's Honey is now accepting orders for 5 frame nucs. Queens will be marked upon request. Don't delay as I make a limited number and sell out every year. Order your 2024 Nuc by completing form the [CB's Honey 2024 Nuc Order Form \(google.com\)](#) or via [CB's Honey | Facebook](#) . Pure raw Kansas honey available in 5 gal buckets. Located just SE of Topeka. 4521 SE 61st Street, Berryton, KS 66409. Call or text Cheryl Burkhead at 785-224-9077 or email cherylbhoney@gmail.com.

CEDAR RIDGE BEES

5 Frame Nucs for Sale. We are your local Premier Bee Products Dealer specializing in plastic foundation made entirely in the U.S.A. We sell bucket feeders and other bee equipment. Call or text Philip Knaus at 785-581-4216 or contact us at cedarridgebeehives@gmail.com - Check out our bees and products at www.cedarridgebees.com Cedar Ridge Bees 585 N 500 Rd, Overbrook, KS 66524.

T CREEK BEES AND HONEY – Tecumseh/Berryton, KS

Tecumseh Creek winds its way through the home yard lending its name to the brand. Located between Lawrence and Topeka, T Creek offers 5-frame nucs, online honey sales, custom honey packing, wholesale delivery to the Topeka / Lawrence area, 5-gallon buckets of honey, and drop-shipping wholesale service to rural grocery stores and agritourism destinations. Visit www.tcreekbees.com Email: [Tim Urich](mailto:Tim.Urich) or find the bees on [Facebook](#). Order 2024 5-frame nucs by visiting the website and completing the nuc order form. Owner: Tim Urich. LLC in the State of Kansas and licensed by Kansas Dept of Ag.



Honey Bee Biology and Beekeeping, Third Edition, Dewey M. Caron and Lawrence John Connor,

\$90 postage included. *This book should stay on the dashboard of every beekeeper's truck. It's that good, and that necessary. Kim Flottum, Bee Culture.*

This comprehensive textbook easily replaces many beginner books while adding comprehensive details of bee biology essential to becoming a successful beekeeper and student of the honey bee. First released in 1999, *Honey Bee Biology and Beekeeping* is widely accepted as a major textbook of Apiculture (beekeeping). Beekeepers and bee clubs use it to teach other beekeepers.

Universities use it to teach college students bee biology and beekeeping. It concentrates on the 'why', 'how' and 'when' of beekeeping. It explains bee and beekeeping basics in a manner meaningful to people who lack an extensive background in biology. Yet it is not over-simplified and provides a meaningful source of beekeeping information for the informed beekeeper. The Third Edition has been carefully edited, updated, and expanded to 480 pages. New chapters have been added, as have colorful new graphics and photographs. The Glossary has also been expanded.

WicWas Press LLC Kalamazoo, MI 49001 - www.wicwas.com

The Association does not endorse nor evaluate the advertisements, products, or services offered in the Buzzer.

Northeastern Kansas Beekeepers Association
Robert Burns, Treasurer
7601 W 54th Terr
Shawnee Mission, KS 66202-1129

Address Service Requested

Meeting

Monday, February 19, 2024 (in person)

The Northeastern Kansas Beekeepers' Association

Membership is open to anyone interested in bees or bee culture. Dues are \$25.00 per calendar year (December 31-December 31) for the first in the family joining. Those joining in July or later in the year may pay \$12.50 for ½ year. Additional members of a family wanting voting privileges shall be assessed dues at \$1.00 per year. Youth memberships (18 years of age and younger) are \$12.50 per year. Please submit new memberships and renewals to the treasurer or on-line at www.nekba.org.

The Bee Buzzer is the official publication of the Northeastern Kansas Beekeepers' Association, Inc. and is published monthly. Commercial ads are accepted in the newsletter for a fee; non-commercial ads by paid members are accepted & are free.

The library of the association is free to all current members. Books may be checked out at the meetings and kept for a period of 30 days. The bee publications, *The American Bee Journal* and *Bee Culture* can be subscribed to through the treasurer or on-line. The *American Bee Journal* is offered at a discount through the association only.

The association meets each month, generally on the third Monday at 7:00 p.m. except during the months of January and July. Beekeeping classes will tentatively be held in January and February for 2024. This is a non-profit organization; elected officers serve without pay. Everyone is invited to attend the meetings. Check *The Bee Buzzer* or website at www.nekba.org each month for the actual date, time, and location. If the weather is bad, call an officer or check the website to find out if the meeting will be held or cancelled.

2024 Officers

President: Cheryl Burkhead , 4521 SE 61st St., Berryton, KS 66409 cbfritz@aol.com	785-224-9077
1st VP (Program Chair): Matt Brandes , 4741 Highway K 68, Wellsville, KS 66092 matthew@n523rv.com	913-706-3087
2nd VP (Librarian): Michael Hewitt , 9221 SE Berryton Rd, Berryton, KS 66409 garlicranch69@gmail.com	785-230-0827
3rd VP (Honey Plants): Jo Patrick , 611 E Sheridan St., Olathe, KS 66061 brian-patrick@sbcglobal.net	913-645-8947
Secretary: Elaine Ellenz , 17650 W 113 th St., Olathe, KS 66061 elaineellenz@gmail.com	913-515-1607
Treasurer: Robert Burns , 7601 W 54 th Terr., Shawnee Mission, KS 66202 rburnshoney@gmail.com	913-481-3504
Youth Scholarship Chair: Dale Spurlin , 24964 160 th Ct., Leavenworth, KS 66048 LightedPathHoney@outlook.com	913-775-0997
Military/Veteran Appr. Liaison: Buck Bradley , 11 E 900 Rd., Baldwin City, KS 66006 buckusmc0@hotmail.com	785-248-1005
Editor: Tim Marshall , 4736 Halsey St., Shawnee, KS 66216 flyinmonk@yahoo.com	816-392-6854

2024 Special Events Coordinators:

(Class): Kristi Sanderson , 1252 E Frontier Ln., Olathe, KS 66062 sandersonk09@gmail.com	913-768-4961
(Funday): Joli Winer , 19201 S Clare Rd, Spring Hill, KS 66083 heartlandhoneyks@gmail.com	913-593-3851
Webmaster: Robert Burns , 7601 W 54 th Terr., Shawnee Mission, KS 66202 rburnshoney@gmail.com	913-481-3504

Visit on-line at www.nekba.org. Save time. Join, re-new, or register.