

STRONG SCHOOLS MARYLAND



**STRONG
SCHOOLS
MARYLAND**
strongschoolsmaryland.org

CREATING A WORLD-CLASS EDUCATION IN MD



Maryland schools are *underfunded* by \$2.9 billion per year. Fewer than 40% of Maryland graduates are college and/or career ready.

WHAT HAPPENED?

This caused inequitable access to funding with 53% of Black students attending underfunded schools, compared to 8% of White students. Maryland academic scores also fell to 26th nationally, with Black, Latinx, and low-income students scoring an average of 30 points lower than White students.



HOW DO WE FIX IT?

Maryland formed a commission chaired by Brit Kirwan to analyze student needs and how to meet them with best practices from all over the world. The Kirwan Commission released their report of recommendations, and the Maryland General Assembly kickstarted most of them in the Blueprint bill approved during the 2019 legislative session. The recommendations help eliminate achievement gaps as well as boost performance for all students.



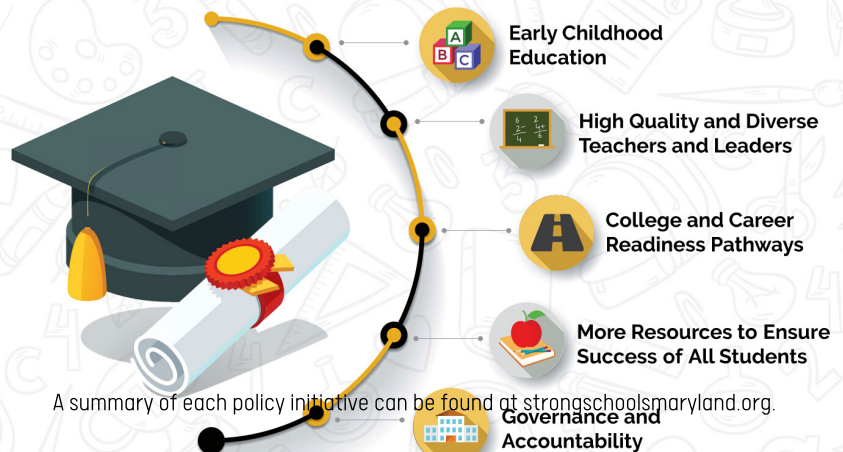
WHAT'S NEXT?

School districts across the state received \$255 million new dollars in 2019 to fund these initiatives. Now that we have a down payment, We must ensure the full recommendations are funded in order to transform our prek-12 system.

Help us get this done in the 2020 legislative session by joining Strong Schools Maryland. We are a non-profit, non-partisan, campaign organizing to fully implement and fund the Kirwan Legislation (Blueprint for Maryland's Future) to make Maryland schools world-class.



Kirwan Commission Policy Initiatives



TAKE ACTION NOW!

Join us to advocate in Annapolis during the 2020 legislative session and start fighting for our children's future today. Complete the interest form <https://tinyurl.com/Annapolisinterestform>

Can't come to Annapolis? Advocate in your local area instead! We can help you get more involved. Sign up for our email list and fill out an interest form at strongschoolsmaryland.org

Sign up at strongschoolsmaryland.org or email linsey@strongschoolsmaryland.org



Early Childhood Education is Critical

- Expand the network of Maryland Family Support Centers and Judy Centers for all low-income children and families that need them
- Staff capacity building for all new and current early learning programs
- Provide high quality Pre-Kindergarten for 4-year olds, low income 3 year olds and all children with disabilities

Elevating the Teaching Profession is Essential

- Elevate the status of the teaching profession by improving working conditions, allowing more time for collaboration and strategic planning, comparable salaries, & implementing career ladders for teachers
- Improve teacher quality by making teacher preparation programs with higher standards and a variety of classroom experiences
- Incentivize collaboration between school systems and colleges of education to better recruit, train, and retain teachers
- Recruit a more diverse workforce through strategic recruitment and retention efforts including strengthening teacher induction and new teacher support



Greater Accountability is Necessary for Success

- Establish an Independent Oversight Board with authority to develop a comprehensive plan for implementation and the ability to hold state and local agencies accountable for carrying out assigned roles.
- Track and report on progress of students as a whole and within subgroups as well as track and report on progress on program implementation and success.



Students Must Leave High School Better Prepared for College and Careers

- Modify Maryland College and Career Ready standards to emulate global standards by:
- Giving high school students, after 10th grade, the chance to earn an Associate's degree and finish high school ready to go to work with an industry-certified credential or to start the last two years of college
- Providing targeted interventions to all students not meeting College and Career Ready standards by 10th grade to ensure they are on track by 12th grade to avoid post-secondary remediation
- Creating two groups to modify the current Career and Technical Education (CTE) offerings to ensure: 1) quality CTE program design, 2) ongoing CTE program implementation



More Resources Must be Provided for At-risk Students

- Increase per pupil funding with additional resources for specified categories of student need: students who live in poverty; students who are limited English proficient; and students with a disability
- Increase wraparound services for at-risk students and their families including resources for a service coordinator and additional physical or mental health practitioners
- Identify students not on track for college and career readiness and provide more intensive support beginning in grades K-3.

To view the full report, please visit:
www.strongschoolsmaryland.org