



Experience

Goettsch Partners, Chicago, Illinois

February 2014 to present

Associate Principal, Lead Designer

- Description: Lead the design team, from conceptualization to implementation. Set the strategy for the site design, building design and planning.
- Building types: commercial, residential, mixed use, hospitality
- Other areas: Urban planning and interior design

Solomon Cordwell Buenz, Chicago, Illinois

April 2005 to February 2014

Associate Principal, Senior Designer

- Description: Develop the form, materials and systems of the design from start to finish, beginning with initial sketches and working through concept design, schematic design, design development and construction documents, remaining involved in the project through the entire construction process to make design decisions as required.
- Building types: commercial, residential, mixed use, educational and transportation
- Other areas: Urban planning and interior design

Murphy/Jahn, Chicago, Illinois

September 1998 to April 2005

Project Architect

- Description: building planning and 3D imaging for competition entries, concept design and schematic phases; drawing and coordinating details during design development and construction document phases
- Building types: commercial, residential, mixed use, transportation, biotech
- Other areas: Urban planning

Internships

Murphy/Jahn, Chicago, Illinois

April to June, 1995, September to December 1996, April to June, 1997

Shriver and Holland, Norfolk, Virginia

April to June, 1995, September to December 1995

West Carroll Bergmann, Toledo, Ohio

September to December 1993, April to June 1994, September to December 1994

Education

University of Cincinnati, Cincinnati, Ohio

Bachelor of Architecture, cum laude

June 13, 1998

SUMMARY

General career goals:

- Creating architecture that responds critically to the site and context
- Integrating technical design that conserves resources and improves interior quality
- Developing programming strategies based on the impact of information technology

FOCUS ON DESIGN

Goettsch Partners has offered a great opportunity for me to hone my approach to design. As the design lead I communicate directly with clients and guide the staff in developing multiple concepts to meet their needs. The partners on the projects offer suggestions which are taken into account as the design evolves in a collaborative process. On the Lingang Master Plan project I directed a team of 8 people who each developed a specific aspect of the design. I set the general design strategy and encouraged the team to use it as a springboard for the development of the master plan. We created a feedback loop that helped the design evolve and allowed everyone the opportunity to feel a sense of ownership over the project, as well as finding the best possible solutions.

RESPONSIVE STRATEGIES

I was the senior designer on the Loyola School of Nursing project, a modern composition that ties into the neighboring school of medicine via a glass link. It uses materials and modules consistent with the existing school to create a different but complementary exterior image. At the same time, the enclosure and organization of functions effectively manage the sun and other environmental factors while providing comfortable, well-lit, naturally ventilated interiors.

INTEGRATED TECHNOLOGY

The Merck Serono Headquarters in Geneva, Switzerland, is an example of advanced technology that I have applied to local projects. Working with Transsolar KlimaEngineering, the design team utilized numerous energy conservation strategies to achieve a highly desirable working environment without paying an energy usage penalty. High performance glass facades are shaded with a rolling exterior sunshade system. Active slabs and displacement ventilation replace less efficient standard systems. Daylighting and natural ventilation take advantage of the sun and the wind to reduce energy consumption.

PROGRESSIVE CONCEPTS

The Home-Office Building concept, published in the March/April 2012 issue of Urban Land Magazine, is an example of how technology might impact the way future buildings are configured. It makes use of better communication capabilities to allow people to work from home in a space specifically dedicated to it. I designed the building prototype for this new programming concept.

TEAMWORK

I find that the best results come from a collaborative environment in which everyone feels a need and a desire to contribute ideas, and does not hesitate to do so. The entire project team - client, staff, consultants, contractors - all have important contributions to make to the design. It is important for a lead designer to listen carefully to the variety of inputs and develop a clear strategy to address them.

I am a member of the American Institute of Architects and a LEED accredited professional.

PROJECTS

RECENT WORK | GOETTSCHE PARTNERS

**Mixed Use Master Plan, Lingang, China, 2014**

- 300,000 sm development in suburban Shanghai comprised of office, residential, hotel, convention center, retail and public amenities

**Office Development, Lingang, China, 2014**

- Phase 1 of the Lingang Master Plan, 100,000 sm of low and mid rise office buildings. 12 total buildings ranging from 5,000 - 15,000 sm arranged around central courtyards. The cores are at the ends of the buildings, allowing a clear lease span from wall to wall, improving daylighting capabilities

**Mixed Use High Rise, Chicago, IL 2014**

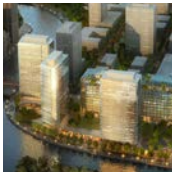
- 600' high hotel, apartment and condo development at a high profile undisclosed location in downtown Chicago

**Office Development, Shanghai, China, 2014**

- Proposal for an 8 building office complex near the Hongqiao Airport in Shanghai. Groups of two buildings share central atrium lobbies. Auto courts with trellis roofs provide shade and a grand sense of entrance

**Apartment Complex, Abu Dhabi, UAE, 2014**

- Proposal for a mixed use development of apartments and serviced apartments adjacent to New York University, Abu Dhabi. The planning is based on traditional middle eastern "Fareej" principles, a series of public, semi-public and private spaces that organize residential planning.

**Master Plan, Chicago, IL 2015**

- Layout for 37 acres of prime Chicago real estate. Our development team was selected for the project and the entitlements process is underway.

**Coin Museum, Abu Dhabi, UAE, 2015**

- Numismatic World is a museum dedicated to the history and study of coins. The design is modeled after a bank vault, the vault door being a large glass wall with an LED light matrix that can display different coins or other graphics. The interior of the museum carries on the vault concept with galleries being volumes within the main volume

**Bank Headquarters, Dubai, UAE, 2015**

- A 25,000 sm office tower for a Dubai bank. The building is a curved bar with a three-story rhythm of exterior gardens that add visual interest for the inhabitants and are accessible in appropriate weather. The east and west facades are modeled after expanded metal, albeit on a very large scale.

PROJECTS

COMPLETED WORK | UNDER CONSTRUCTION

**111 West Illinois, Chicago, IL, 2008**

- 10 story speculative office building uses an oddly shaped panhandle site to create the building's iconic imagery, low iron glass at the ground floor allows interior functions to activate the street, roof terrace at top floor offers views to the city

**III Towers, Bratislava, Slovakia, 2010**

- 600+ units in three towers on a parking podium with amenity deck; elliptical forms open up view corridors between the towers and create an iconic image on the skyline

**Loyola School of Nursing, Maywood, IL, 2012**

- 4 story school housing classrooms, simulation laboratories, learning commons, quiet study area and offices; incorporates active slabs, raised floors, solar chimneys, operable windows and fixed and operable exterior sunshades; ties into the existing school of medicine literally and figuratively, using consistent materials and modules to create a different exterior image

**HUB Group Corporate Headquarters, Oak Brook, IL, 2013**

- LEED Gold corporate headquarters with high performance glass enclosure allowing light and view, enhanced mechanical systems, sustainable site strategies and water conservation measures including rainwater harvesting

**500 Lakeshore Drive, Chicago, IL, 2013**

- 500 unit apartment tower and parking podium; small unit sizes are offset with a large amenity package including pool deck, fire pit, cabanas and private party area; and an amenity floor with party room, game room, library, business center, theater room and fitness center

**Park Monroe, Chicago, IL, 2011**

- Office and condominium entrance addition conceived as horizontal and vertical glass planes in front of the existing north facade. The glass canopy and planters form an "outdoor room" at the condo entrance

**55 East Monroe Street, Chicago, IL, 2013**

- Office lobby repositioning with new ceilings and lighting, glass treatments, new elevator lobbies, column covers and wall finishes

**100 Van Ness, San Francisco, CA, 2015**

- Renovation of an existing office tower into a 399 unit apartment building with new glass curtain wall enclosure, landscaped roof deck and amenities on the second floor

PROJECTS

OFFICE DESIGN

**Grzybowska 78 Office Tower, Warsaw, Poland, 2015**

- Exterior cladding and interior public space project utilizing clear and fritted glass and a series of horizontal and vertical slots to articulate the massing

**625 West Adams Street, Chicago, IL**

- Speculative office building with 800 seat event space for the local church on the first floor, planned LEED Silver. Construction depends on securing an anchor tenant.

**199 West Monroe Street, Chicago, IL**

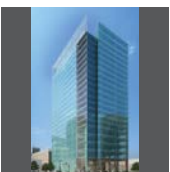
- Speculative office project featuring a bowed north facade fronting the park across the street, mechanical plant located at the middle of the building is 4 stories high and is situated between the core and the party wall in order to maximize lease space on the floors

**Abu Dhabi Central Plaza, Abu Dhabi, UAE**

- high rise office tower and mixed use tower; office tower incorporates atria for daylight and views, and a fixed exterior shading system for sun protection; mixed use tower includes office, hotel and residential with the exterior enclosure shifting as the interior functions change, retail podium has a BIPV solar farm on the roof that provides electricity for the project

**2 North Riverside, Chicago, IL**

- 1,000,000 SF office building with retail base

**601 West Monroe, Chicago, IL**

- 500,000 sf office building fronting Monroe Street on the north and a public park on the southwest

**Kohls Corporate Campus**

- Corporate headquarters for 2000+ Kohls employees; comprised of 3 low rise buildings, 1 high rise building, a central welcome/branding center, retail and parking

**Zurich North America Corporate Headquarters, Schaumburg, IL**

- 720,000 sf corporate campus comprised of 3 buildings with structured and surface parking

PROJECTS

RESIDENTIAL | MIXED USE | HOSPITALITY | INTERIOR DESIGN

**City North, Phoenix, AZ**

- Condominiums on a parking podium with amenity deck; triangular shape of the residential tower opens interior units up to views and interlocks with the rectangular shape of the podium

**Short North Project, Columbus, OH**

- Plan for a boutique hotel, office building, parking garage and art gallery uses the angle of the highway as a form driver creating a sawtooth shaped development

**Block 37, Chicago, IL, 2016**

- Mixed use building incorporating 4 star hotel and luxury rental units sitting atop an existing retail podium

**Boutique Hotel, Chicago, IL**

- High rise hotel with 150 rooms, restaurant, conference center and other amenities; subway line that cuts through site disallows deep foundations at the southwest corner; a curtain wall slices through an essentially solid form following the subway line, creating a dynamic image

**311 West Monroe Street, Chicago, IL, 2014**

- Office lobby repositioning with new floors walls and ceilings where there is currently a drive through loading zone; relocation of the lobby from Monroe Street to Franklin Street

**440 South LaSalle Street, Chicago, IL, 2013**

- Office lobby repositioning with new lighting, elevator lobbies, elevator cabs, floors and wall finishes

**Notebaert Nature Museum Addition, Chicago, IL**

- New multipurpose pavilion at the west side of the Nature Museum

PROJECTS

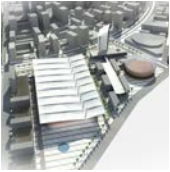
INTERNATIONAL WORK

**Transit Hotel, Abu Dhabi, United Arab Emirates**

- 250 key hotel adjacent to the original Abu Dhabi International Airport terminal

**Airport Arrivals Hall, Abu Dhabi, United Arab Emirates**

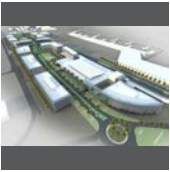
- Concept design for a new arrivals hall at the original Abu Dhabi airport

**Conference Center, Abu Dhabi, United Arab Emirates**

- Conference center campus for the new Capital City master plan for Abu Dhabi

**Intermodal Transit Center, Abu Dhabi, United Arab Emirates**

- Adjacent to the new Abu Dhabi International Terminal, the station accommodates high speed rail, commuter rail, street cars, buses, taxis and parking for the airport

**Airport Office Park, Abu Dhabi, United Arab Emirates**

- Urban planning project organizing low rise office buildings, a transit hotel and parking around a central landscaped court, buildings work together to create a curving urban form visible from arriving jets

**South City, Bratislava, Slovakia**

- Midrise condominium complex master plan and conceptual building design

**River Danube City, Bratislava, Slovakia**

- Urban planning project with office, residential, retail, education and civic functions, uses oddly shaped easements and no-build zones to create a shifting park directed toward the river

**Mixed use complex, Prague, Czech Republic**

- Site incorporates a 23 story residential tower, 2 linked 5 story office towers and an existing building that will be renovated from office to condominium use

PROJECTS

RESEARCH | COMPETITIONS | ART

**Home office building research project**

- The home office building combines residential and commercial space in a new way; office space is stacked on top of units, “zipping” them together into one building; the functions are segregated such that office floors are accessed by separate elevators from a separate ground floor lobby; internal stairs connect office and residential within the units.

**Ma’alam Dubai competition entry, Dubai, UAE**

- Dubai monument tower is modeled after an Arabian sword; conceived as a folded concrete plane infilled with a series of steel viewing platforms accessed by elevators and a central stair; naturally ventilated and protected from the sun, the tower uses minimal energy while giving visitors a cultural experience

**Martin Luther King, Jr. Memorial competition entry, Washington, D.C.**

- Conceived as a formal object in a park, the memorial is a circular amphitheater with a podium in the center, paying homage to one of the nations greatest speakers; access points to the amphitheater are aligned with major axes of other memorials on the mall, anchoring the structure into the historical fabric

**Wind Folly, Chicago, IL, 2008**

- Kinetic sculpture made of stainless steel and copper pinwheels attached to a clear plexiglass frame with a large copper fin; the sculpture spins on a steel post like a huge weather vane made up of more than 400 humming pinwheels

**Canstruction sculpture, Chicago, IL, 2011**

- Titled “the grand ‘can’yon”, this sculpture built out of canned food for charity inverts the idea of a sculpture by celebrating the canyon-like void in the center of a simple block

PROJECTS

EARLY WORK | MURPHY/JAHN

**Bayer Headquarters, Leverkusen, Germany, 2002**

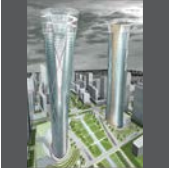
- 4 story corporate headquarters using active radiant slab technology, raised access floors with displacement ventilation and an automated double skin facade with integral sunshades and operable windows

**Merck Serono, Geneva, Switzerland, 2006**

- Biotech headquarters with active slabs, displacement ventilation and automated operable windows in office zones; Incorporates a research lab wing, conference functions and a grand indoor / outdoor space called the forum which has an operable roof

**Corridors 4, Downers Grove, IL**

- 7 Story, 420,000 sf suburban office complex comprised of 2 office buildings and a connected parking garage

**Guangzhou Twin Towers, Guangzhou, China**

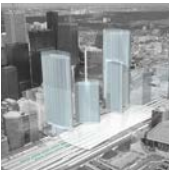
- 300m mixed use twin towers for the central business district / Zhujiang New Town, comprised of office, hotel and retail functions

**Bishopsgate Office Tower, London, England**

- 200m high Office tower in central London

**Philip Morris Research and Development Campus, Geneva, Switzerland**

- 4 story lab building

**Toronto Union Station**

- Mixed use office, residential, hotel development above new rail station

Awards

Bayer Headquarters:	AIA Chicago Distinguished Building Award, 2003 AIA National Honor Award, 2004
Merck Serono Headquarters:	AIA Chicago Citation of Merit, 2007
“Wind Folly” kinetic sculpture:	Best in Show, 2008
Canstruction structure:	People’s Choice Award, 2011

Publications by Robert Muller or featuring his work

“A Hybrid for a New Way of Life: the Home Office Building” Urban Land, March/April 2012: Vol. 71 #3/4; pg. 60, 5 pgs, Muller, Robert

“111 West Illinois: Not Your Average Iceberg; Bold Jahn-inspired building rises to parcel’s challenge” Chicago Tribune Cityscapes blog, September 12, 2008, Kamin, Blair

Bayer Konzernzentrale Headquarters, Birkhauser: 2003, Blaser, Werner et al.

Merck Serono Geneva, Avedition: 2008, Marquart, Christian et al.

Presentations

“ Using Trnsys Software to Inform eQUEST Energy Models”
US Green Building Council, Chicago Chapter, March, 2010

Guest Critiques

University of Illinois:	Senior Thesis jury, 2006
University of Illinois Chicago:	Freshmen project jury, 2007
University of Illinois Chicago:	Freshmen project jury, 2008
Illinois Institute of Technology:	Sophomore midterm jury, 2009

Professional Activities

American Institute of Architects: Chicago Chapter	Member, 2006
LEED:	Accredited Professional, 2007
City Year Chicago:	Associate Board member, 2010 Ad Hoc committee member, 2010

Name and location: **Lingang Master Plan, Lingang, China, 2014**
Client: LJZ, Chinese developer
Architect of Record: Goettsch Partners
Local Design: ECADI

This Master plan exercise encompassed 300,000 sm of mixed use development, including office, residential, hotels, retail and public amenities. The development is conceived from the perspective of the users, with their experience as the most important factor in the decision making process. It is designed for them to feel comfortable, excited, energized, at peace, relaxed, healthy and happy during their entire time in the district.

The design centers around creating adjacencies that promote an interconnected, vibrant environment and maintain the integrity of the urban street wall. The buildings conform to the shape of the street so that the street itself has a sense of urban space.



Lingang Master Plan



Name and location: **Lingang Office Development, Lingang, China, 2014**
Client: LJZ, Chinese developer
Architect of Record: Goettsch Partners
Local Design: ECADI

This is phase 1 of the Lingang Master Plan. It is comprised of 100,000 sm of office space. The office buildings are all grouped to the north and west of the master plan, nearest to the park and the public transit node. The broad faces of the buildings are oriented toward the views to the north and south and the towers are staggered to maintain view corridors.

All entry-drop-offs and building lobbies are located in the intimate setting of the central courtyards. The ground floor of the buildings houses supporting retail functions and the entry lobbies. The buildings are small, ranging from 5,000 - 15,000 sm, intended to be used by a single tenant. Foundation work has begun, expected completion late 2017.



Lingang Office Development

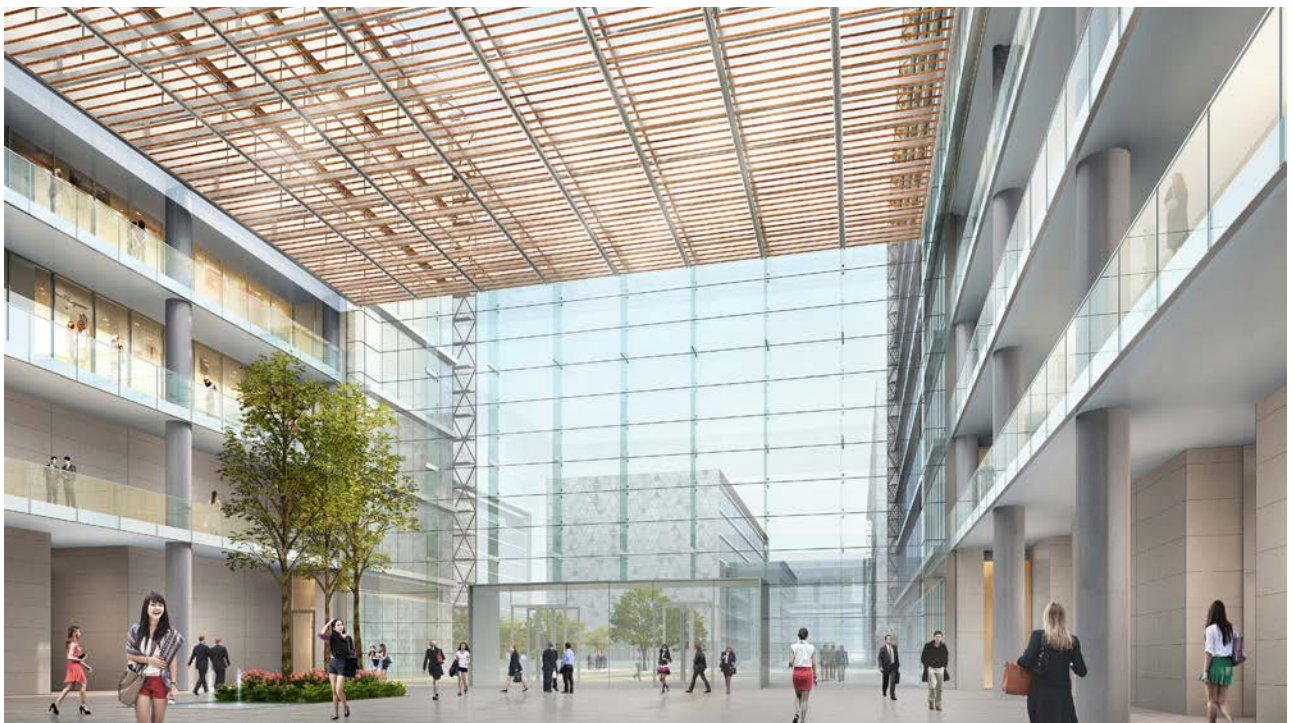


Name and location: **Hongqiao Office Complex, Shanghai, China, 2014**
Client: R&F, Chinese developer
Architect of Record: Goettsch Partners

This is a complex of 8 low rise buildings totaling 140,000 sm. The goal of the project is to combine the sophistication of high tech design with the Zen philosophy of minimalist simplicity and connection to nature. Using these concepts as aesthetic and functional drivers, we create simple, efficient, sustainable buildings and exterior environments. High tech design provides formality and attention to detail. Zen principles yield warmth, serenity and a relationship with nature. Both high tech design and Zen principles advocate conservation of resources, daylight and views, and efficiency - key factors in making a building both economical and sustainable. The end result is a great environment for the tenants, one that is comfortable, high quality, beautiful and enriching.



Hongqiao Office Complex



Name and location: **Abu Dhabi Mixed Use Development, Abu Dhabi, UAE, 2014**

Client: Bloom

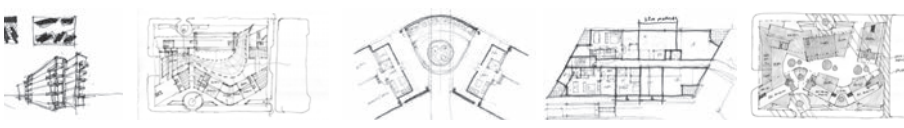
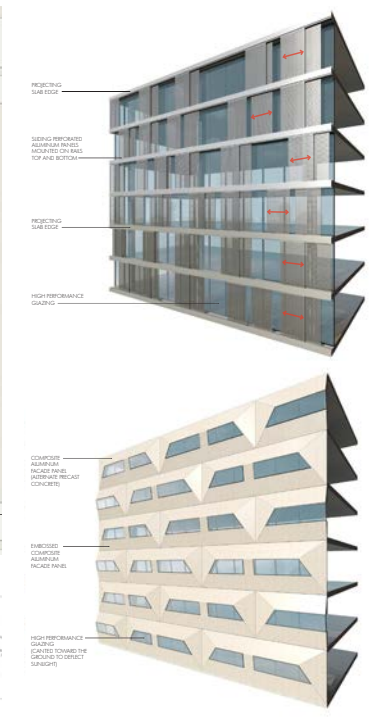
Architect of Record: Goettsch Partners

This was a proposal for 184 apartment units and 167 serviced apartments near New York University, Abu Dhabi. The scheme organizes the buildings to relate to the arrival sequence, with a hierarchy of public and private open spaces and consideration of the prevailing wind direction.

The serviced apartment building is on the northeast, directly across from the university, providing a branding opportunity. The residential buildings are on the southwest, away from the university and facing the water. Both buildings flank a central space that is ringed with retail and opens toward the northwest to funnel the prevailing winds through. A shade structure creates the character of an outdoor market



Abu Dhabi Mixed Use Development

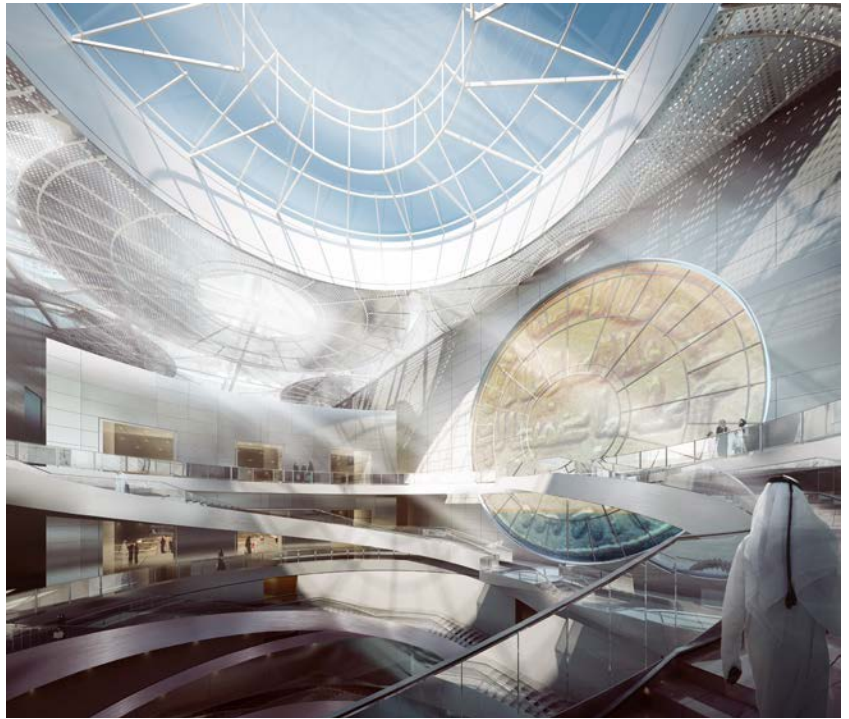
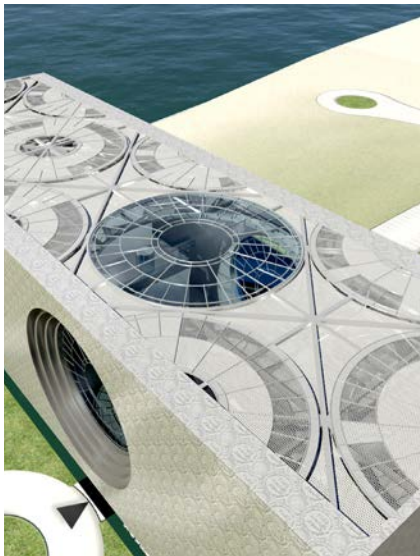


Name and location: **Numismatic World, Coin Museum, Abu Dhabi, UAE, 2015**

Client: UAE Numismatic Organization

Architect of Record: Goettsch Partners

Numismatic World is a museum dedicated to the history and study of coins. The design is modeled after a bank vault, the vault door being a large glass wall with an LED light matrix that can display different coins or other graphics. The interior of the museum carries on the vault concept with galleries being volumes within the main volume. The design goal was to create a dramatic exterior image and interior environment that was evocative of the collection within.



Name and location: **Bank Headquarters, Dubai, UAE, 2015**

Client: Dubai Islamic Bank

Architect of Record: Goettsch Partners

This is a proposal for a 25,000 sm bank headquarters on Sheikh Khalifa Bin Zayed Road in Dubai. The building is a curved bar with a three-story rhythm of exterior gardens that add visual interest for the inhabitants and are accessible in appropriate weather. The east and west facades are modeled after expanded metal, albeit on a very large scale. The expanded metal dimensions are tailored to block the harsh eastern and western sun while allowing as much view as possible. The top floor houses an executive board room that looks over the skyline of Dubai.



Bank Headquarters



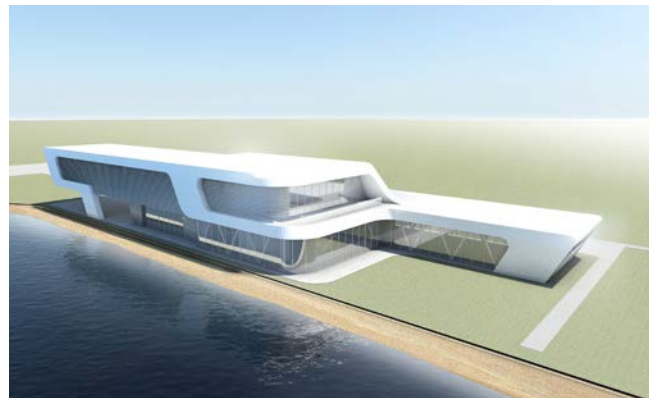
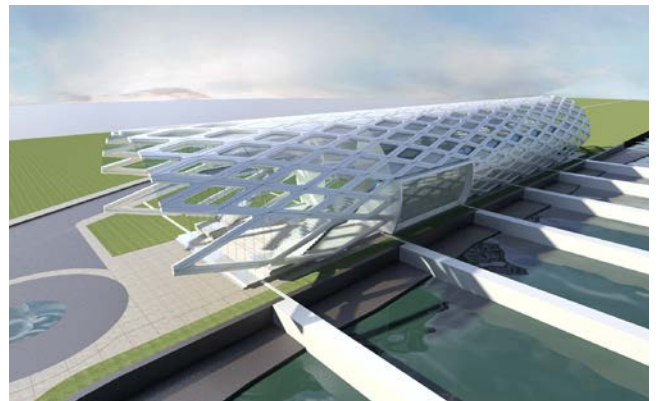
Name and location: **Majalis and Dining for Sheikh Nahyan, Abu Dhabi, UAE, 2015**
Client: Sheikh Nahyan
Architect of Record: Goettsch Partners

This proposal is for a building housing a dining room and a Majalis (Arabic meeting space) for His Excellency Sheikh Nahyan of Abu Dhabi. I developed multiple planning concepts to be presented to the Sheikh for his consideration.

The client is looking for something bold and dramatic to house these functional spaces. Each of the schemes solves the design problem with a different planning construct and a different aesthetic. The first is a linear “tube” structure in which the walls and roof have the same character, a spiralling diagrid that forms the structural system and creates a dynamic enclosure. The second scheme uses the metaphor of a sailboat to generate a light, airy building and interior environment. The third is a dynamic sculptural form that positions the majalis and dining on different floors and in different positions, with the entry connecting the two. Both program elements take advantage of views to the neighboring bay.



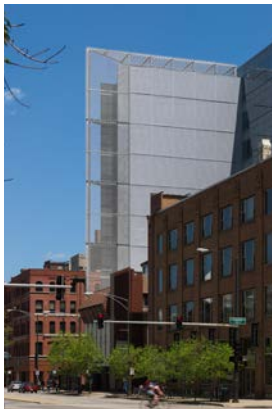
Majalis and Dining



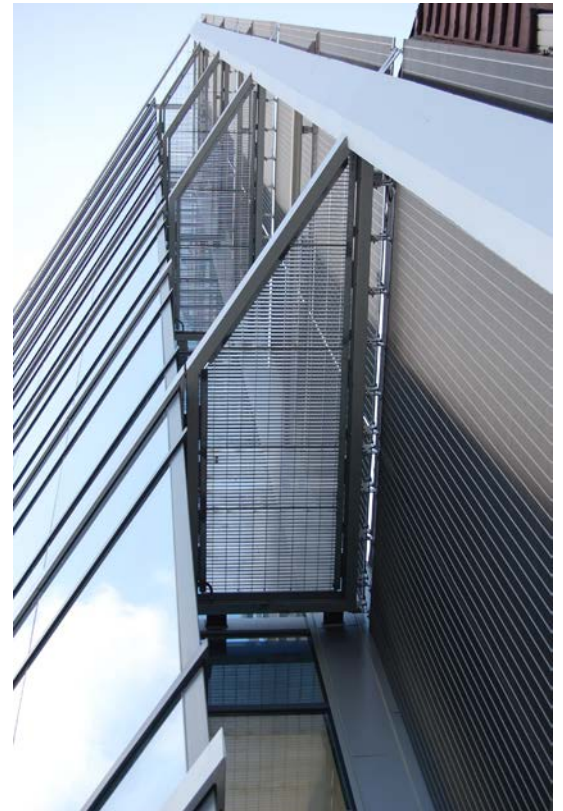
Name and location: **111 West Illinois, Chicago, IL, 2008**
Client: Alter Group
Architect of Record: Solomon Cordwell Buenz

This 10 story office building houses a graduate school for childhood development on floors 2-4. The ground floor contains 2 lobbies, one for the main building and one for the school, as well as restaurant and other retail space. There are outdoor terraces at the top floor. I was the senior project designer. I developed the initial concept imagery and was responsible for building planning, core planning and exterior wall design and detailing. I oversaw the entire project design.

The team had to negotiate an oddly shaped panhandle site. Further, the design needed to incorporate a school with its own lobby into an office building plan. The panhandle was used to form the school's lobby on a public plaza. It offered the opportunity to create a dramatic building form at the same time.



111 West Illinois



Name and location: **Loyola School of Nursing, Maywood, IL, 2012**
Client: Loyola University
Architect of Record: Solomon Cordwell Buenz

The project is a 4 story school housing classrooms, simulation laboratories, learning commons, quiet study area and offices. I was the senior project designer. I developed the initial concept imagery, was responsible for building planning, core planning and exterior wall design and detailing, and oversaw the entire project design.

The complicated program disallowed stacking of most functions. The plans were organized to allow a consistent structural system and core to work for every floor. The owner expressed the desire for an energy conscious building that provided a comfortable, day-lit interior environment. It incorporates active slabs, raised floors, solar chimneys, operable windows and fixed and operable exterior sunshades to achieve the client's goals.



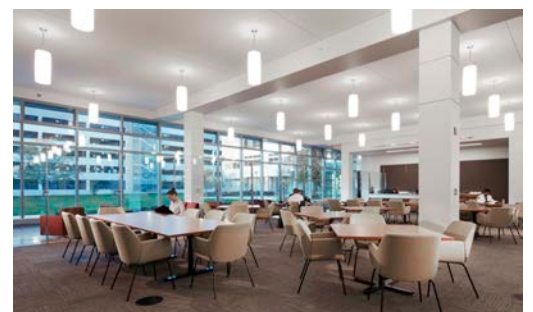
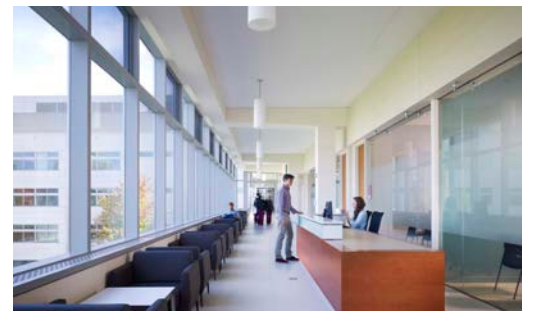
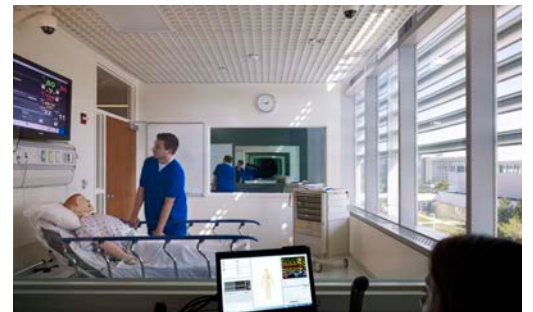
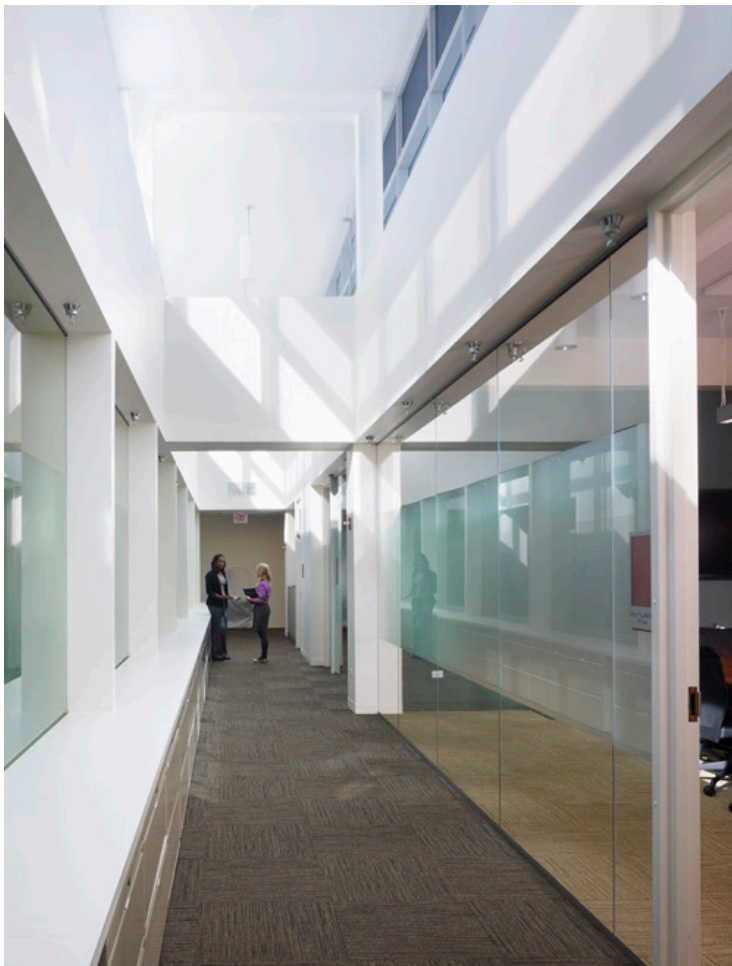
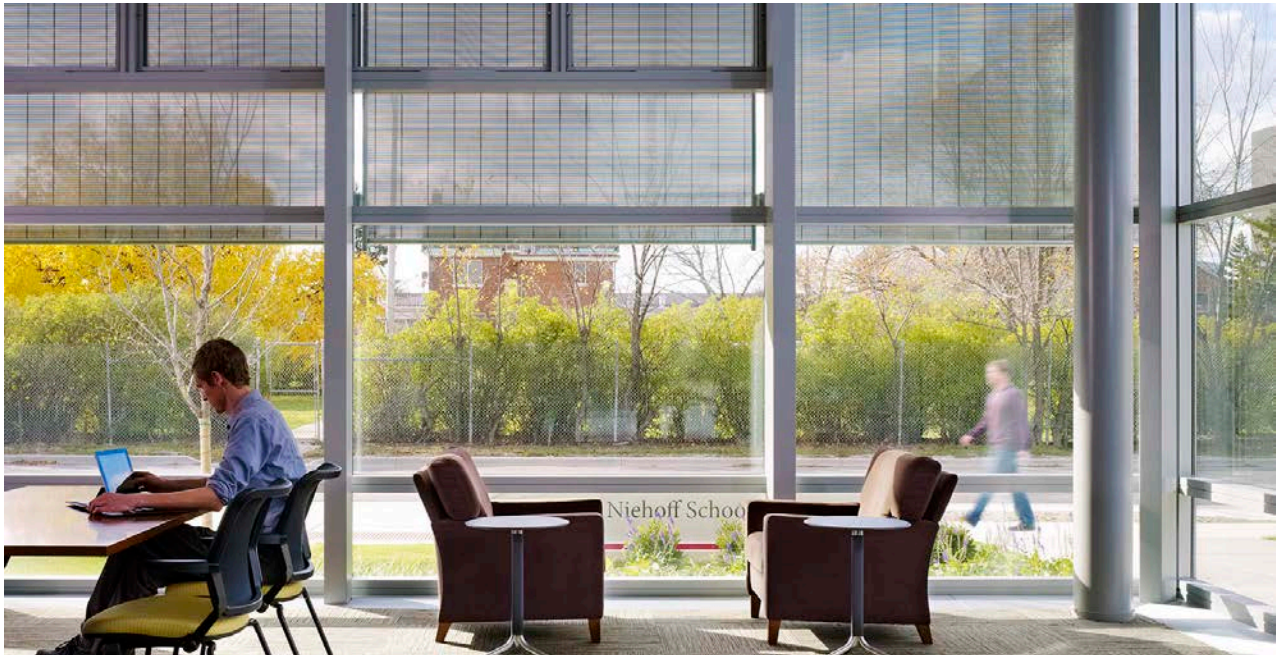
Loyola School of Nursing



Loyola School of Nursing



Loyola School of Nursing



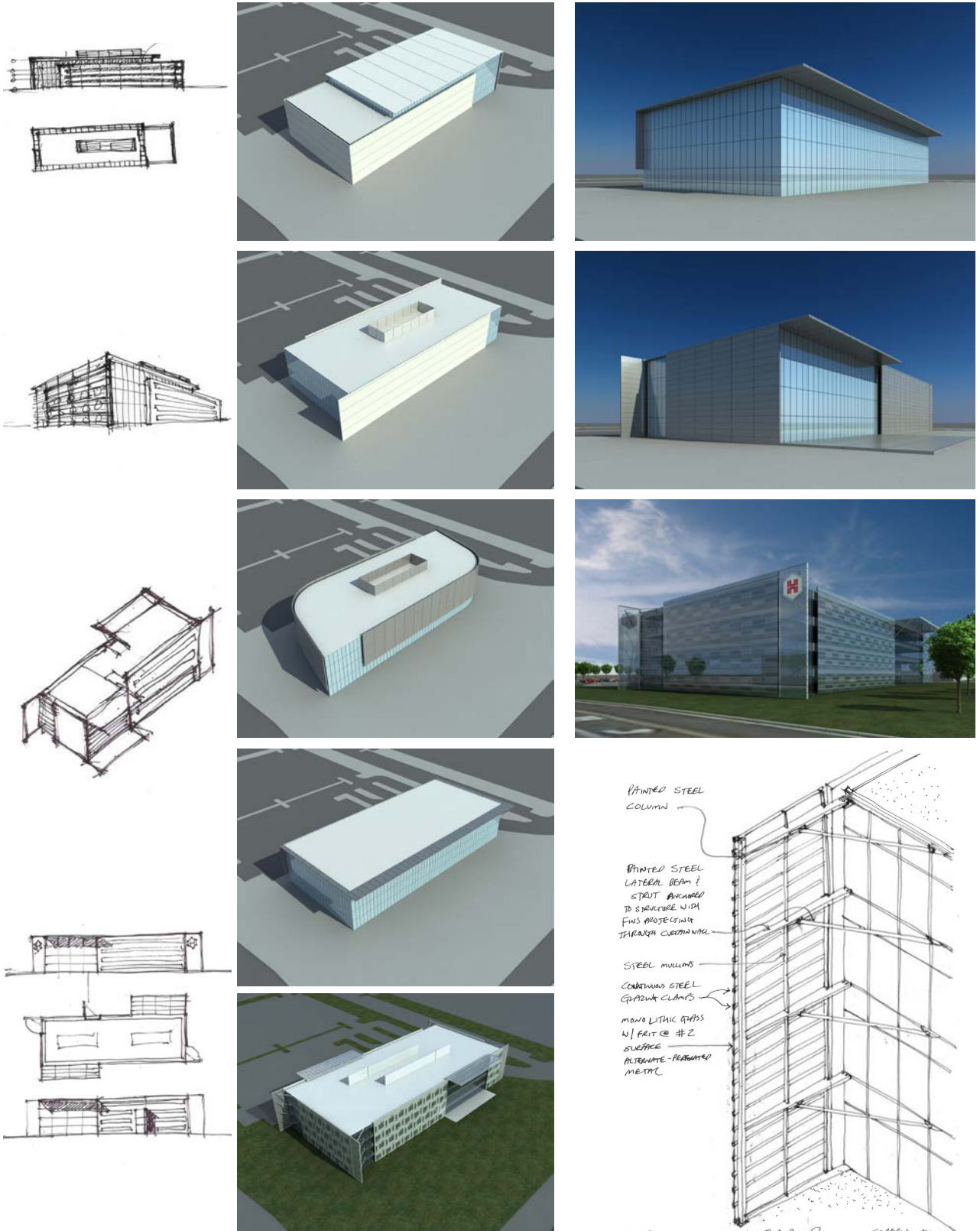
Name and location: **HUB Group Corporate Headquarters, Oak Brook, IL, 2013**
Client: Morgan Harbour Construction
Architect of Record: Solomon Cordwell Buenz

This project is a 4 story corporate headquarters and operations building for the HUB Group, an intermodal transit company. The ground floor contains the executive branch, a small conference center and a deli. There is one level of below grade parking. I am the senior project designer and I developed the initial concept imagery. I developed the exterior wall design and detailing. I worked with the interior design group to coordinate interior and exterior systems.

The client desired a transparent, sustainable building to reflect their company's values. It incorporates a high performance unitized glass curtain wall system with custom ceramic frit patterns. A steel trellis and perforated stainless steel screen wall form a fold that wraps the east and south sides. The building is pursuing LEED Gold certification.



HUB Group Corporate Headquarters



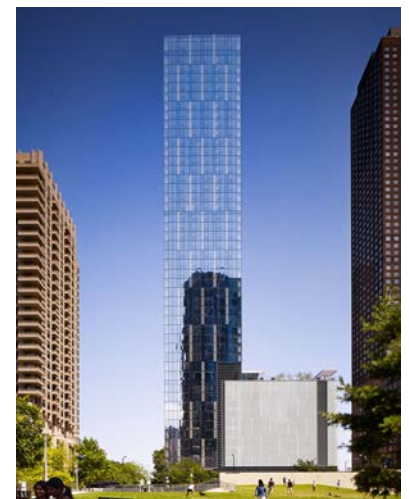
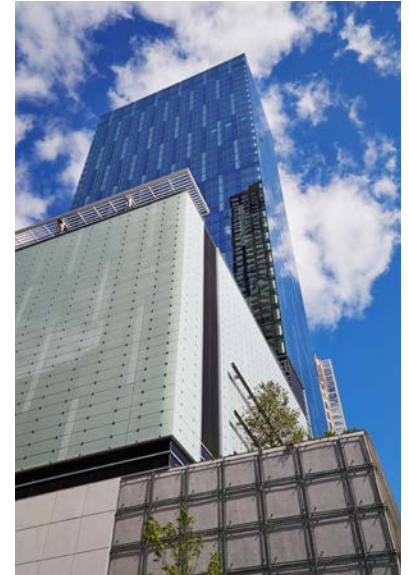
HUB Group Corporate Headquarters



Name and location: **500 North Lakeshore Drive, Chicago, IL, 2013**
Client: Related Midwest
Architect of Record: Solomon Cordwell Buenz

The building is a 500 unit apartment tower and parking podium. The relatively small unit sizes are offset with a large amenity package. It includes a pool deck, fire pit, cabanas and a private party area; also, an interior amenity floor with party room, game room, library, business center, theater and fitness center. I was the senior project designer, focused on the exterior enclosure and interior public spaces.

For a Lakeshore Drive address, the lobby required an entrance on the east side. SCB devised a full length lobby on the north side of the building that can be entered from both east and west. The tower is on the north side of the site so that the amenity deck above the parking podium has access to sunlight from the south. The building is conceived as two large interlocking volumes - the residential tower and the parking podium. Tower units extend down to the second floor on the north.



500 North Lakeshore Drive



Name and location: **Corporate Headquarters design competition**
Client:
Architect of Record: Solomon Cordwell Buenz

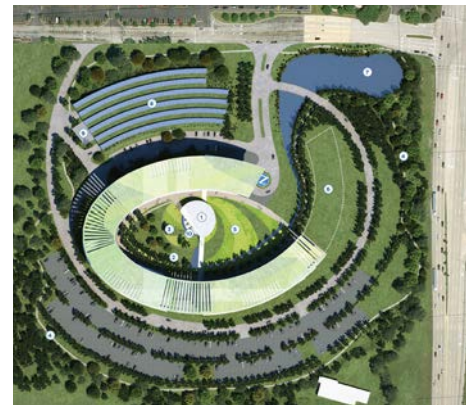
The design of this 720,000 SF headquarters is organized around a central space called the quad. Three buildings are joined by a single roof to create a cohesive image from the street while remaining independent from one another. They are connected by a concourse at the ground floor.

The quad is a unifying device, visually connecting employees in different buildings. It is also available for recreational activities and outdoor dining in good weather. The buildings incorporate multi-story atria and recesses that bring natural light deeper in and encourage interaction between different departments.

The design creates a campus character with multiple buildings surrounding the quad. It makes a powerful, cohesive statement from the highway and the main street. The buildings are very simple and flexible, and are designed to have an exit strategy - each one can be sold or leased individually in the future.



Corporate Headquarters design competition



Corporate Headquarters design competition



Name and location: **100 Van Ness Avenue, San Francisco, CA, 2015**
Client: National Real Estate Advisors/Emerald Fund
Architect of Record: Solomon Cordwell Buenz

This project is a renovation of an existing office tower into a 399 unit apartment building with new glass curtain wall enclosure, landscaped roof deck and amenities on the second floor. I am the senior project designer, responsible for the exterior enclosure design and the interior public spaces. I am working with the design team to develop these elements.

A tight budget and a tight zoning envelope meant that the project needed to develop a lot of its character two-dimensionally. The design team determined that the roof deck would make the iconic statement for the building, forming a folded plane with the western facade. Juliet balcony zones and multi-colored metal spandrel panels within the curtain wall create the two dimensional relief.



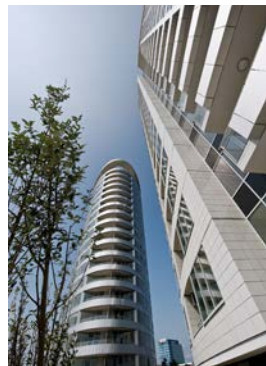
100 Van Ness Avenue, San Francisco



Name and location: **III Towers, Bratislava, Slovakia, 2010**
Client: Golub and Company/Cresco Development Group
Architect of Record: Solomon Cordwell Buenz

This project is for 600+ condominium units in three towers on a parking podium with an amenity deck. I was the project designer responsible for developing the concept drawings and images and reviewing the design drawings of the associate architect.

A narrow site posed a challenge for how to incorporate an efficient parking garage. The height of the buildings was decreed by the zoning, thus three towers were needed in close proximity to one another to meet the pro-forma. The design team devised a series of elliptical buildings that were at an angle to the site to free up views for the end units.



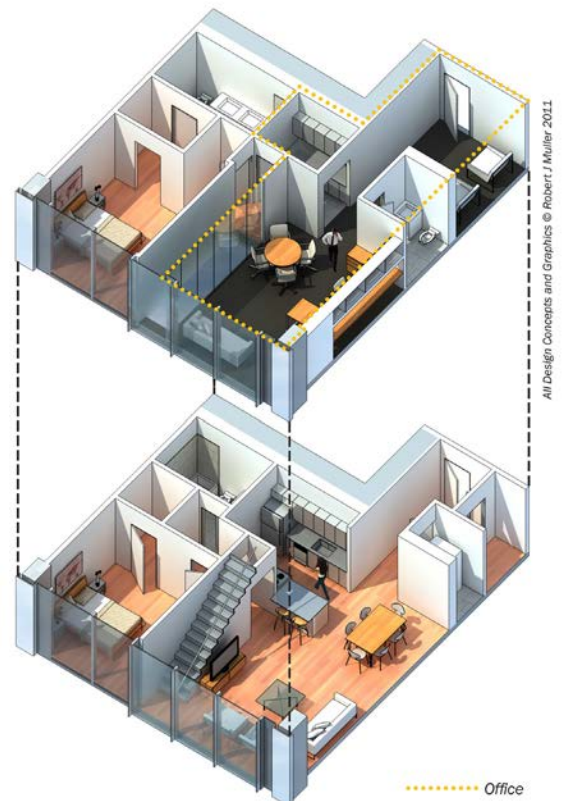
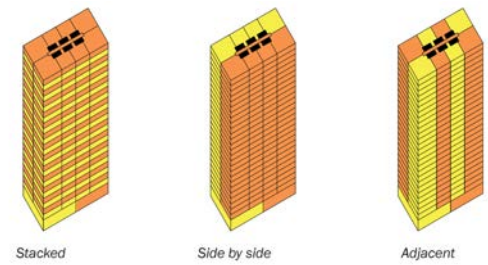
III Towers



Name and location: **Home Office Building, 2012**
Research Project

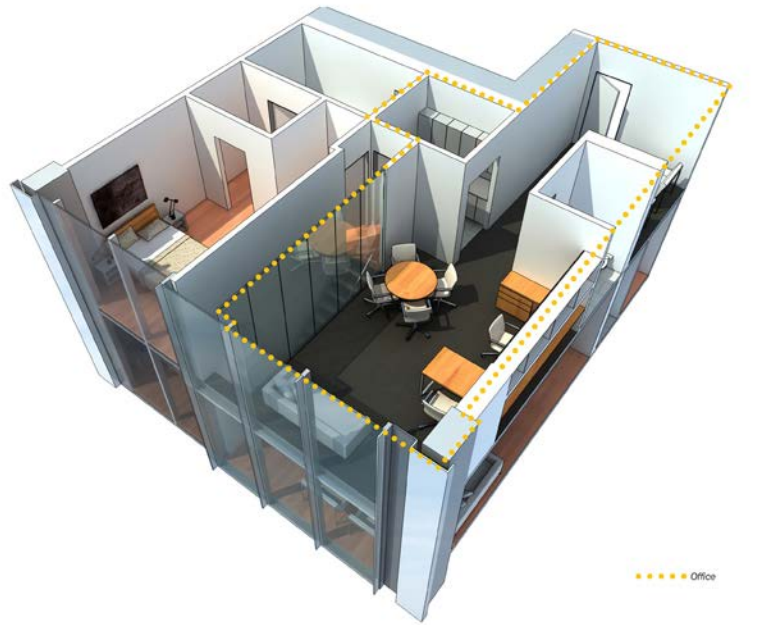
I developed this concept in response to the fact that information technology is changing the way we work. No longer is it absolutely necessary to be in the office in order to perform one's job. As communication capabilities improve, more people will be able to work from home.

The building combines residential and commercial space such that office space is stacked on top of units, "zipping" them together into one building. The functions are segregated so that office floors are accessed by separate elevators from a separate ground floor lobby; internal stairs connect office and residential within the units. The concept is intended to save energy and time by reducing the need to commute between two buildings and wasting energy maintaining both of them. The prototype design and corresponding article were published in the March/April 2012 issue of Urban Land Magazine.



All Design Concepts and Graphics © Robert J. Muller 2011

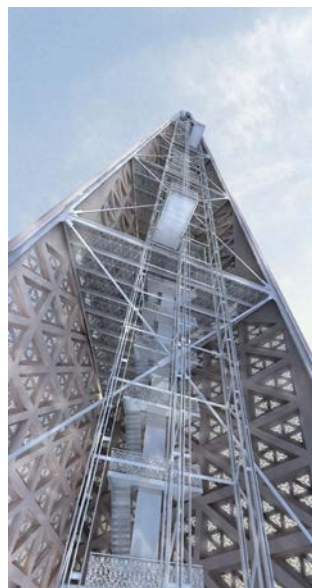
Home Office Building



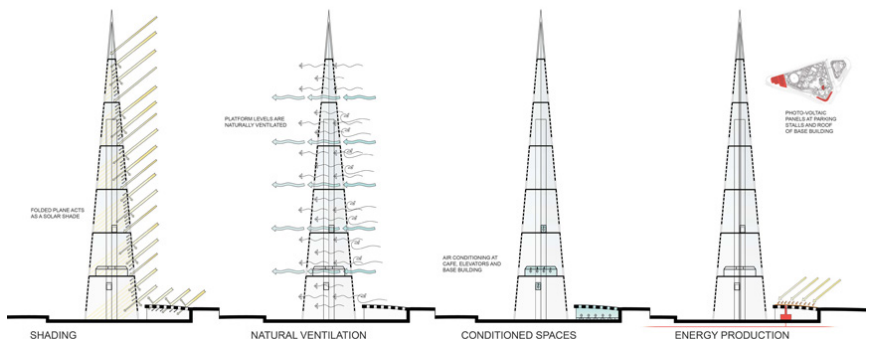
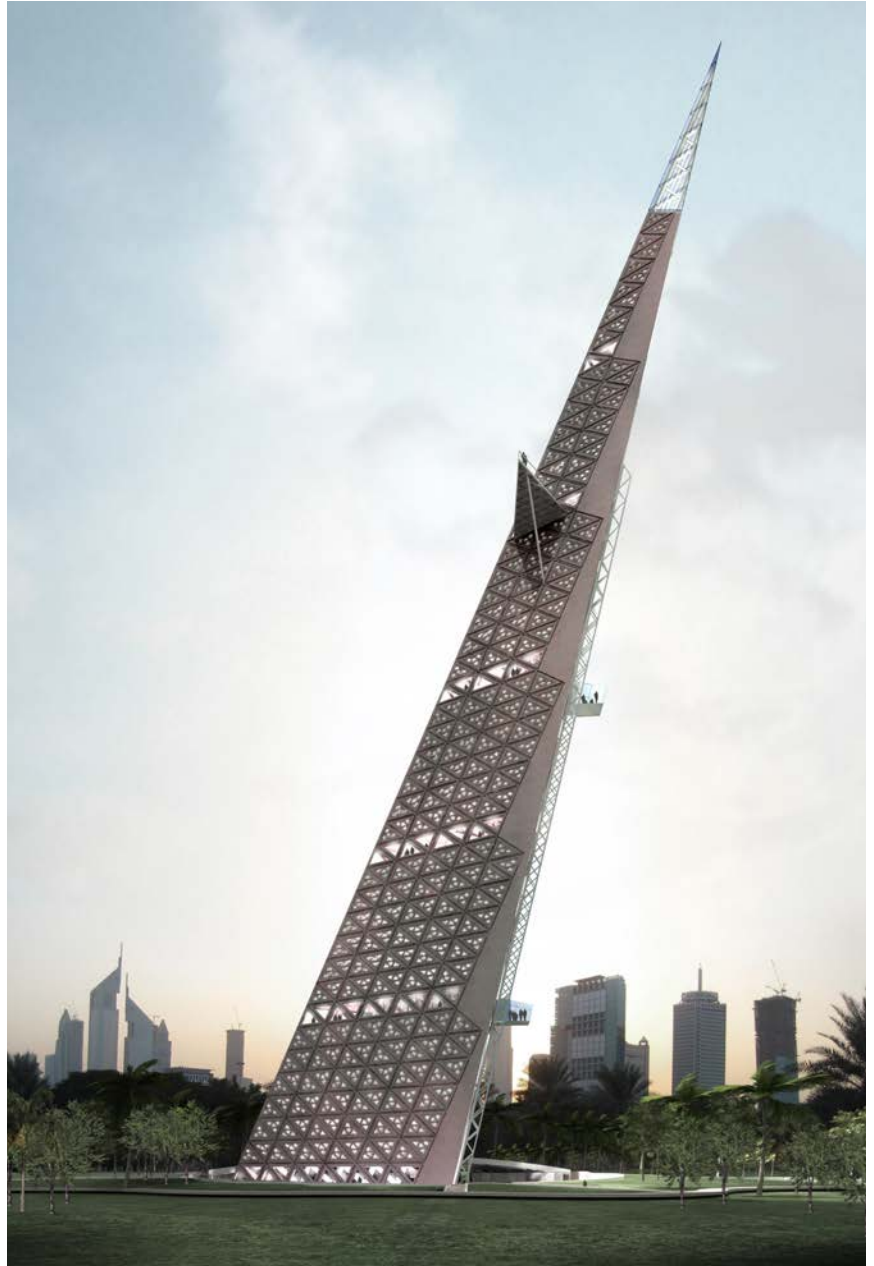
Name and location: **Ma'alam Dubai, Dubai, UAE, Competition Entry, 2009**
Architect of Record: Solomon Cordwell Buenz

This project is the result of a call for entries to design a monument to the city of Dubai. I designed the project and created all of the imagery to support the design. I also wrote a detailed project narrative describing the design and the technical concepts.

The tower is modeled after an Arabian sword held at an angle. It is conceived as a folded concrete plane infilled with a series of steel viewing platforms accessed by elevators and a central stair. The tower is naturally ventilated and protected from the sun, so it uses minimal energy while giving visitors a compelling introduction to the Dubai climate and culture.



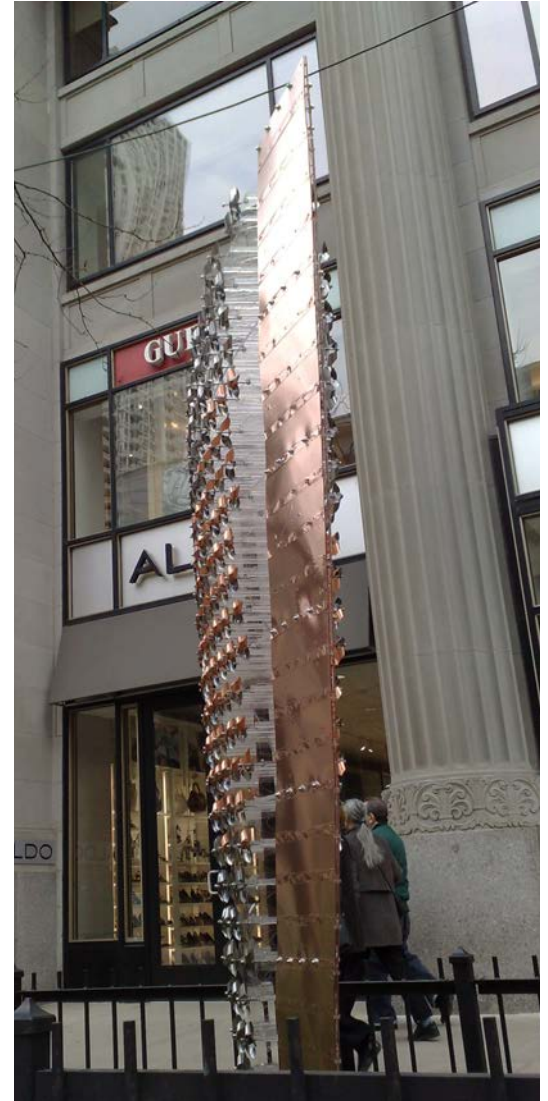
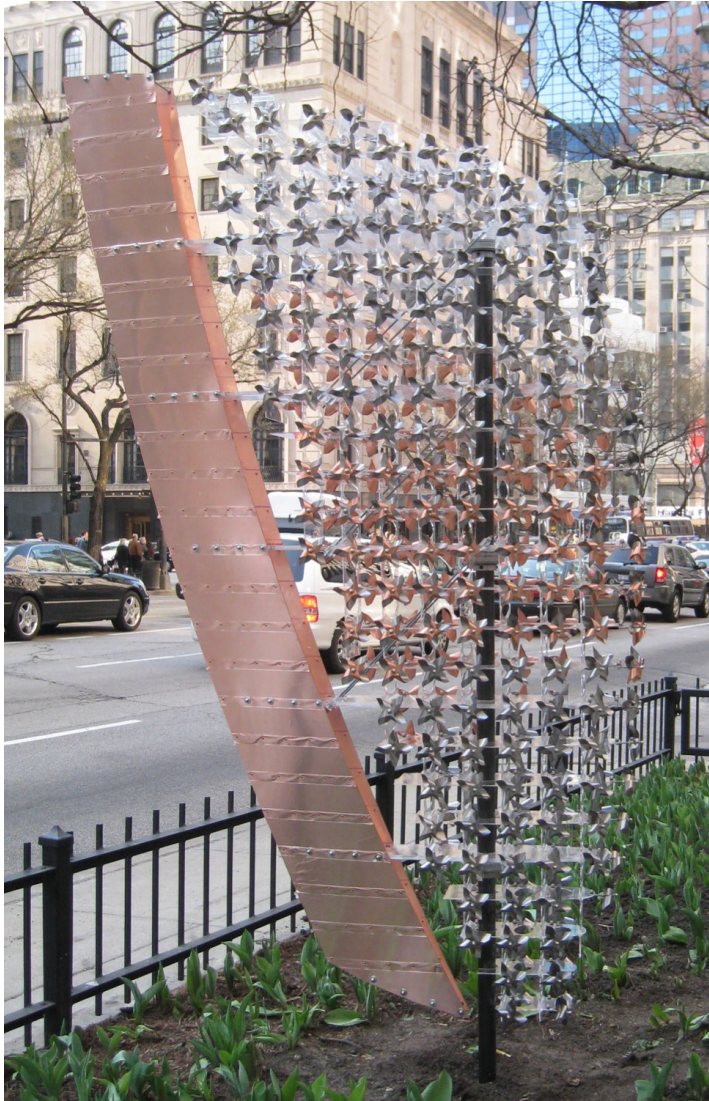
Ma'alam Dubai



Name and location: **Wind Folly, Chicago, IL, 2008**
Sculpture

This project is a kinetic sculpture made of stainless steel and copper pinwheels attached to a clear plexiglass frame. The frame has a large copper fin that makes the sculpture spin on a steel post like a huge weather vane made up of more than 400 humming pinwheels. I designed the sculpture and managed its construction and installation.

The project was designed for “Tulip Days” on Michigan Avenue in 2008. The goal was to draw attention to the concept of wind energy through sculptural forms that enliven the street scape. The desire was for a sculpture that would be in constant motion, even with little wind. This was achieved with the fin. The pinwheels gained momentum as the wind increased. The design, called “Wind Folly”, won the best in show award.



Wind Folly



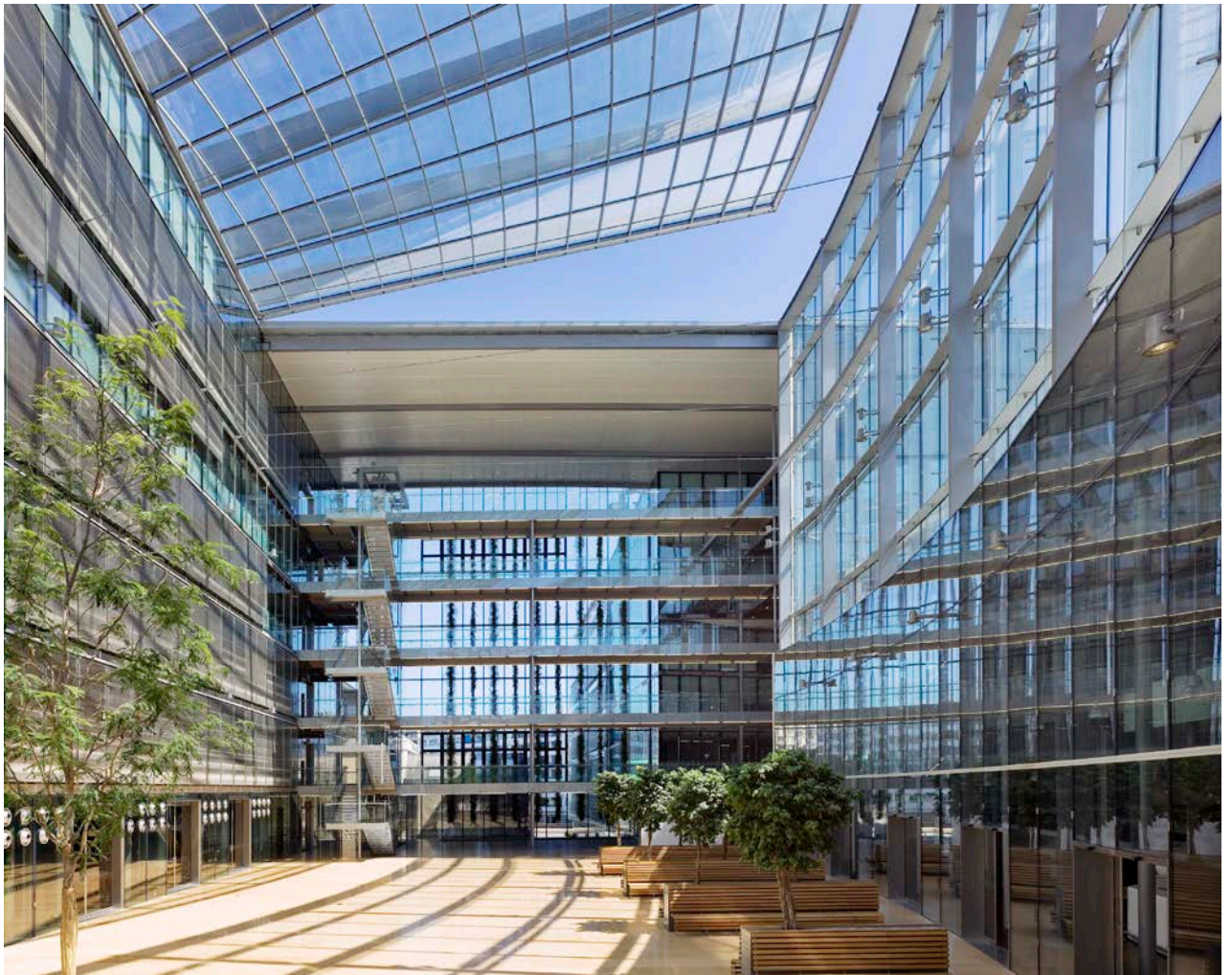
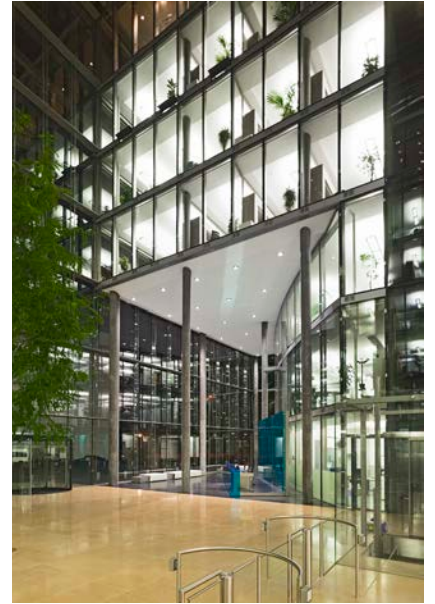
Name and location: **Merck Serono, Geneva, Switzerland, 2006**
Client: Merck Serono S.A.
Architect of Record: Murphy/Jahn

This biotech headquarters houses executive offices, a research lab wing, conference functions and a grand indoor/outdoor space called the forum. I was the project designer responsible for developing and refining the design in 3D. I also developed all of the exterior wall and roof drawings.

The building had to be knitted into the existing fabric of the site, a series of protected train sheds which were renovated to house office and conference functions. Long east and west facing walls aligned with the old sheds and needed to be protected from the sun, so an exterior rolling shutter system was introduced to shade those facades from heat gain. Glass roofs with an 80% solid ceramic frit acted as large sunshades protecting interior atriums while allowing in generous amounts of light.



Merck Serono



Name and location: **Bayer Headquarters, Leverkusen, Germany, 2002**
Client: Bayer AG
Architect of Record: Murphy/Jahn

The Project is a four-story corporate headquarters for Bayer AG containing offices, conference spaces and below-grade parking. I was a project designer responsible for detailing the main lobby, including the feature stair, connecting bridge, custom glass elevator cabs and glass supply air shafts, as well as exit stairs and restrooms.

The challenge was to develop a very transparent building that was a counterpoint to the surrounding stucco buildings on the Bayer campus. The building employed a double skin facade, with integral operable windows and sunshades, that was responsive to climate conditions and provided a stunning transparent image as desired by the client.



Bayer Headquarters



Name and location: **Muller Residence, Chicago, IL, 2016**

Client: Robert and Gretchen Muller

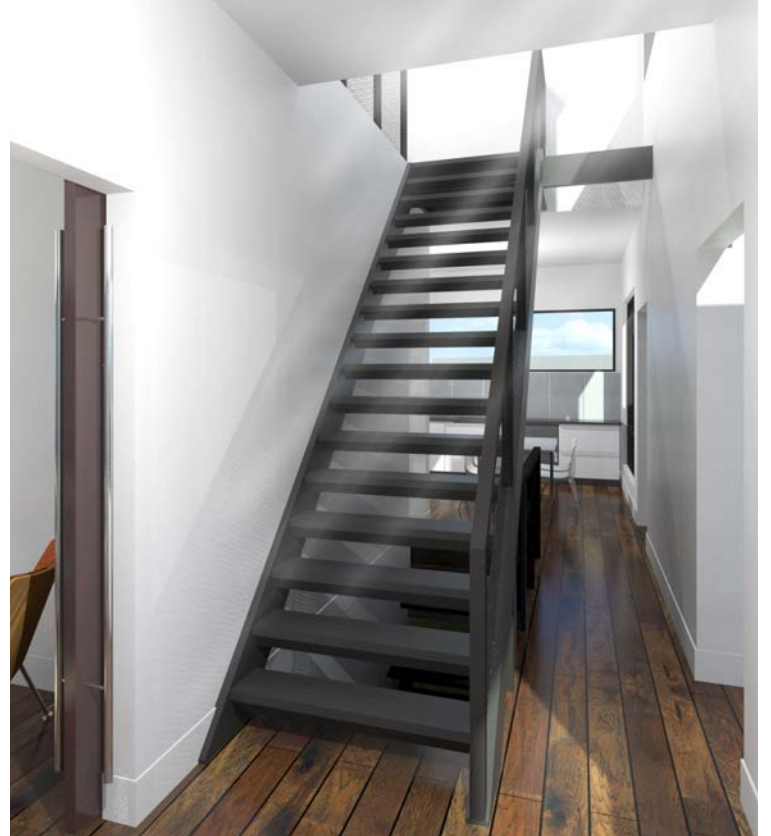
Architect of Record: Robert Muller

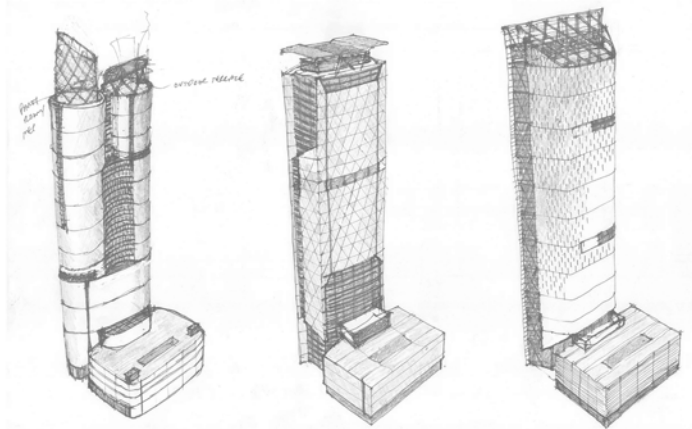
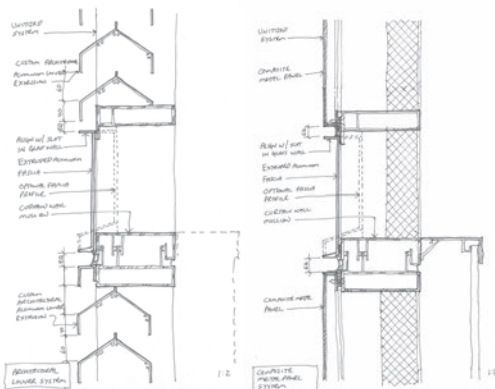
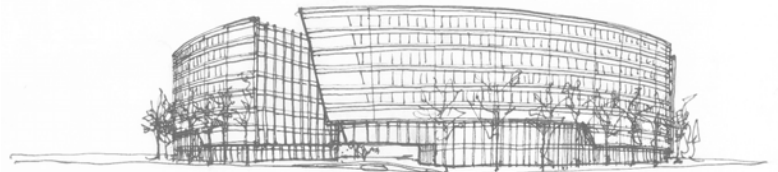
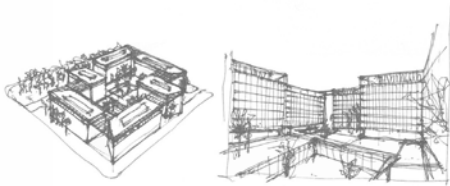
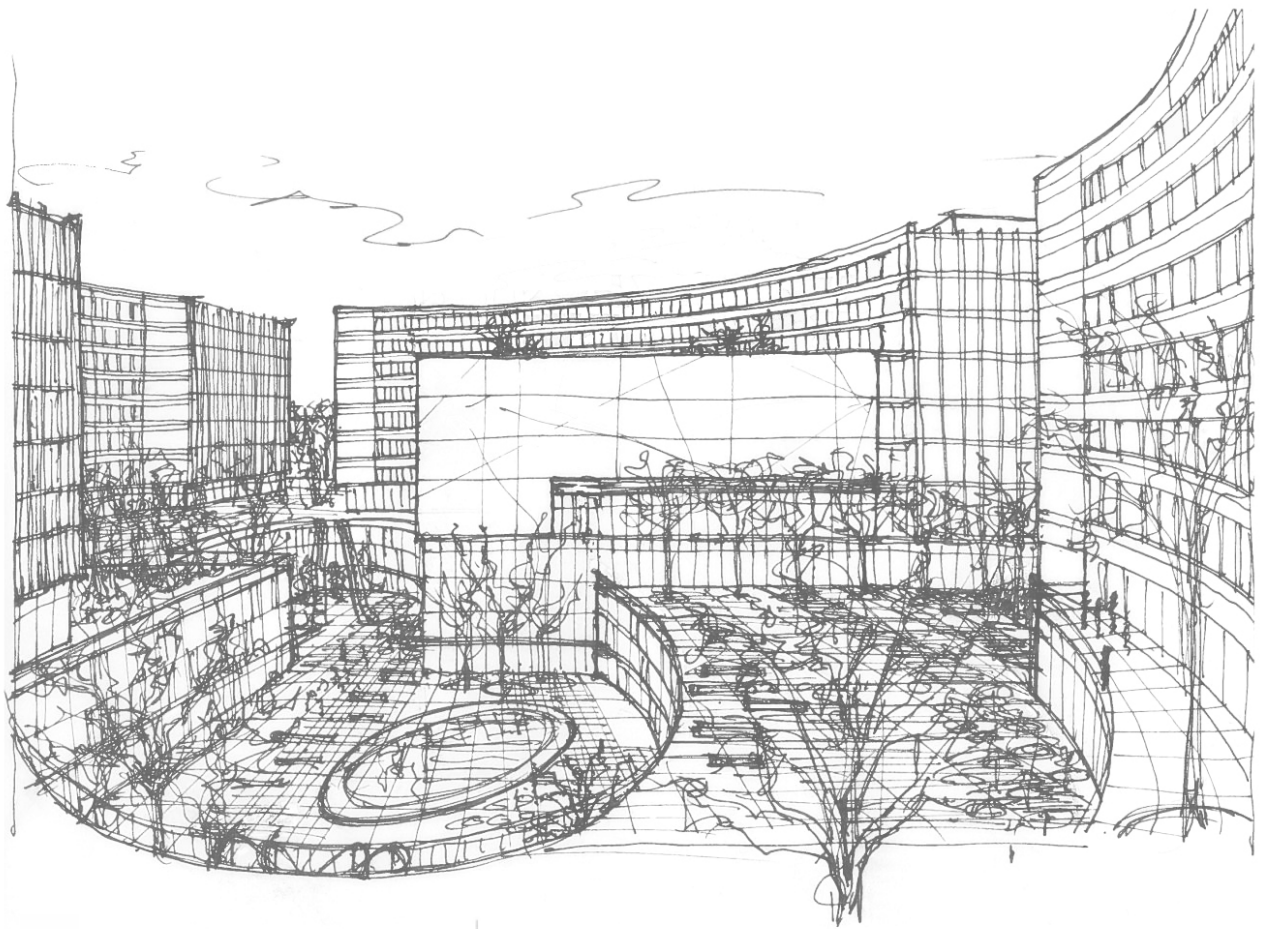
The project is the design of my own house on a triangular shaped lot. There is an existing building on the north side of the site that will be demolished down to the foundation. A two story box will be built atop the existing foundation and a one story addition will project out to the south.

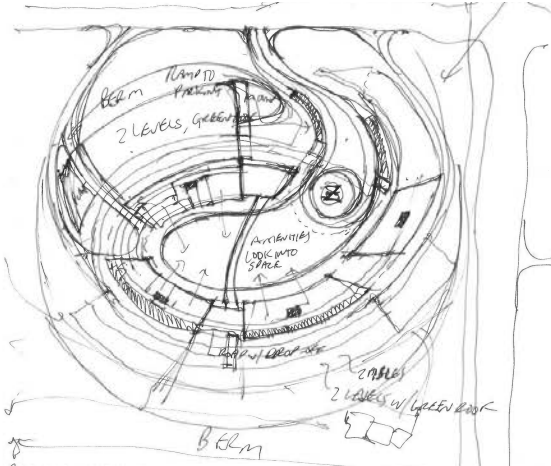
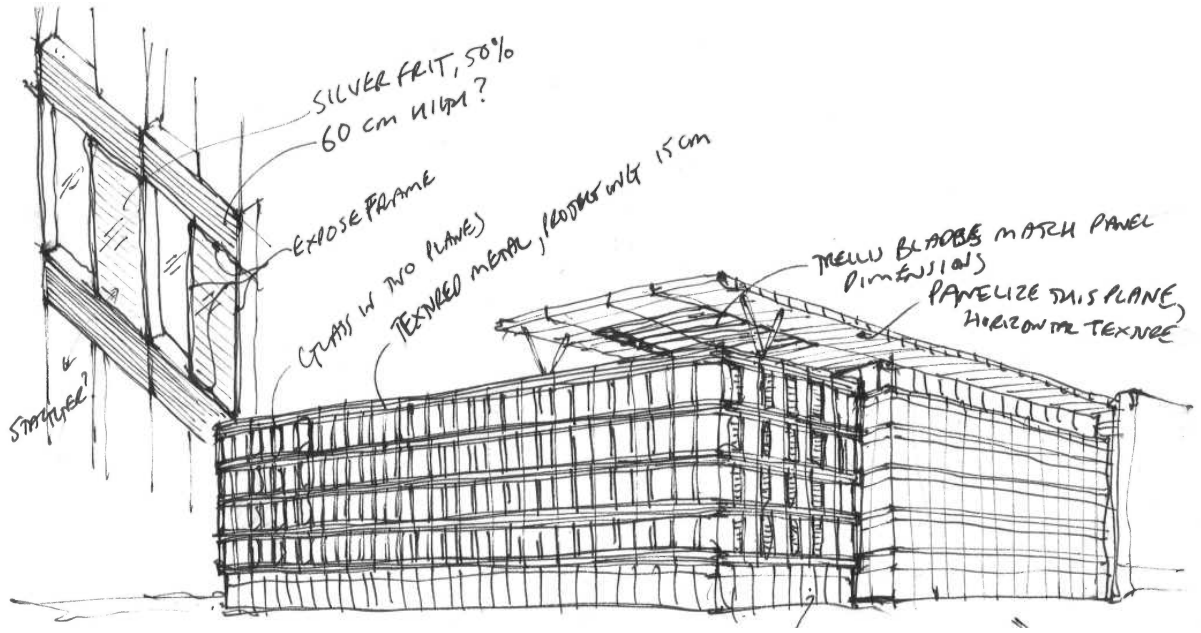
The composition takes advantage of the triangular shape of the site by creating a “T-shaped” house that leaves a substantial yard onto which the main space faces. The house is wood frame construction with fiber cement panel walls and a standing seam metal roof. The large format windows create an abundance of natural light on the interior.



Muller Residence







- Beam AT HIGHWAY
- COVERED WALK FROM GARAGES
- 2 LEVEL GARAGES ON BOTH SIDES w/ BEAMS
- 1 UNDERGROUND PARKING LEVEL
- UNDERGROUND SERVICE
- ROAD AT HIGHWAY COMP?

