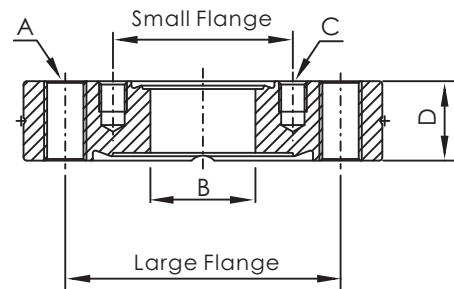


# CF Flanges

## CF ZERO LENGTH REDUCERS- INCH THREAD

\*Material: SS 304L



The last digit of part number means optional thread types shown as follows.

T: Both Small Flange and Large Flange are Inch Tapped holes.

Z: Small Flange(Inch tapped holes)+Large Flange(Thru holes)

CF

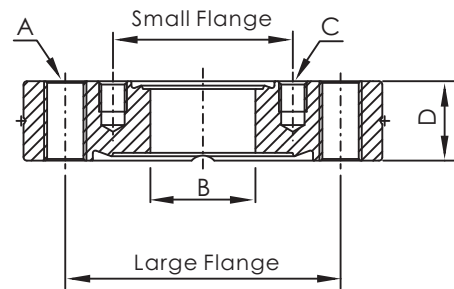
Part Number	Large Flange	Small Flange	A	B (mm)	C	D (mm)
CF-ZL-212x133T	CF2.12"	CF1.33"	1/4-28	15.75	8-32	11.90
CF-ZL-212x133Z	CF2.12"	CF1.33"	6.73	15.75	8-32	11.90
CF-ZL-275x133Z	CF2.75"	CF1.33"	6.73	15.75	8-32	12.70
CF-ZL-275x212T	CF2.75"	CF2.12"	1/4-28	25.40	1/4-28	12.70
CF-ZL-275x212Z	CF2.75"	CF2.12"	6.73	25.40	1/4-28	12.70
CF-ZL-338x133Z	CF3.38"	CF1.33"	8.43	15.75	8-32	16.00
CF-ZL-338x212T	CF3.38"	CF2.12"	5/16-24	25.40	1/4-28	16.00
CF-ZL-338x212Z	CF3.38"	CF2.12"	8.43	25.40	1/4-28	16.00
CF-ZL-338x275T	CF3.38"	CF2.75"	5/16-24	38.10	1/4-28	16.00
CF-ZL-338x275Z	CF3.38"	CF2.75"	8.43	38.10	1/4-28	16.00
CF-ZL-450x133Z	CF4.50"	CF1.33"	8.43	15.75	8-32	17.40
CF-ZL-450x212Z	CF4.50"	CF2.12"	8.43	25.40	1/4-28	17.40
CF-ZL-450x275Z	CF4.50"	CF2.75"	8.43	38.10	1/4-28	17.40
CF-ZL-450x338T	CF4.50"	CF3.38"	5/16-24	50.80	5/16-24	17.40
CF-ZL-450x338Z	CF4.50"	CF3.38"	8.43	50.80	5/16-24	17.40
CF-ZL-462x133Z	CF4.62"	CF1.33"	8.43	15.75	8-32	19.10
CF-ZL-462x212Z	CF4.62"	CF2.12"	8.43	25.40	1/4-28	19.10
CF-ZL-462x275Z	CF4.62"	CF2.75"	8.43	38.10	1/4-28	19.10
CF-ZL-462x338Z	CF4.62"	CF3.38"	8.43	50.80	5/16-24	19.10
CF-ZL-600x133Z	CF6.00"	CF1.33"	8.43	15.75	8-32	19.80
CF-ZL-600x212Z	CF6.00"	CF2.12"	8.43	25.40	1/4-28	19.80
CF-ZL-600x275Z	CF6.00"	CF2.75"	8.43	38.10	1/4-28	19.80
CF-ZL-600x338Z	CF6.00"	CF3.38"	8.43	50.80	5/16-24	19.80
CF-ZL-600x450Z	CF6.00"	CF4.50"	8.43	63.50	5/16-24	19.80
CF-ZL-600x462Z	CF6.00"	CF4.62"	8.43	76.20	5/16-24	19.80
CF-ZL-675x275Z	CF6.75"	CF2.75"	8.43	38.10	1/4-28	21.34
CF-ZL-675x450Z	CF6.75"	CF4.50"	8.43	63.50	5/16-24	21.34
CF-ZL-800x133Z	CF8.00"	CF1.33"	8.43	15.75	8-32	22.35
CF-ZL-800x275Z	CF8.00"	CF2.75"	8.43	38.10	1/4-28	22.35
CF-ZL-800x450Z	CF8.00"	CF4.50"	8.43	63.50	5/16-24	22.35
CF-ZL-800x600Z	CF8.00"	CF6.00"	8.43	101.60	5/16-24	22.35
CF-ZL-1000x133Z	CF10.00"	CF1.33"	8.43	15.75	8-32	24.60
CF-ZL-1000x275Z	CF10.00"	CF2.75"	8.43	38.10	1/4-28	24.60
CF-ZL-1000x450Z	CF10.00"	CF4.50"	8.43	63.50	5/16-24	24.60
CF-ZL-1000x600Z	CF10.00"	CF6.00"	8.43	101.60	5/16-24	24.60
CF-ZL-1000x800Z	CF10.00"	CF8.00"	8.43	152.40	5/16-24	24.60
CF-ZL-1325x133Z	CF13.25"	CF1.33"	10.49	15.75	8-32	28.45
CF-ZL-1325x275Z	CF13.25"	CF2.75"	10.49	38.10	1/4-28	28.45
CF-ZL-1325x450Z	CF13.25"	CF4.50"	10.49	63.50	5/16-24	28.45
CF-ZL-1325x600Z	CF13.25"	CF6.00"	10.49	101.60	5/16-24	28.45
CF-ZL-1325x800Z	CF13.25"	CF8.00"	10.49	152.40	5/16-24	28.45
CF-ZL-1325x1000Z	CF13.25"	CF10.00"	10.49	203.20	5/16-24	28.45

\*Note: SS 316LN Material Available on Request.

# CF Flanges

## CF ZERO LENGTH REDUCERS- METRIC THREAD

\*Material: SS 304L



The last digit of part number means optional thread types shown as follows.

M: Both Small Flange and Large Flange are Metric Tapped holes.

Y: Small Flange(Metric tapped holes)+Large Flange(Thru holes)

Part Number	Large Flange	Small Flange	A	B (mm)	C	D (mm)
CF-ZL-212x133M	CF2.12"	CF1.33"	M6	15.75	M4	11.90
CF-ZL-212x133Y	CF2.12"	CF1.33"	6.73	15.75	M4	11.90
CF-ZL-275x133Y	CF2.75"	CF1.33"	6.73	15.75	M4	12.70
CF-ZL-275x212M	CF2.75"	CF2.12"	M6	25.40	M6	12.70
CF-ZL-275x212Y	CF2.75"	CF2.12"	6.73	25.40	M6	12.70
CF-ZL-338x133Y	CF3.38"	CF1.33"	8.43	15.75	M4	16.00
CF-ZL-338x212M	CF3.38"	CF2.12"	M8	25.40	M6	16.00
CF-ZL-338x212Y	CF3.38"	CF2.12"	8.43	25.40	M6	16.00
CF-ZL-338x275M	CF3.38"	CF2.75"	M8	38.10	M6	16.00
CF-ZL-338x275Y	CF3.38"	CF2.75"	8.43	38.10	M6	16.00
CF-ZL-450x133Y	CF4.50"	CF1.33"	8.43	15.75	M4	17.40
CF-ZL-450x212Y	CF4.50"	CF2.12"	8.43	25.40	M6	17.40
CF-ZL-450x275Y	CF4.50"	CF2.75"	8.43	38.10	M6	17.40
CF-ZL-450x338M	CF4.50"	CF3.38"	M8	50.80	M8	17.40
CF-ZL-450x338Y	CF4.50"	CF3.38"	8.43	50.80	M8	17.40
CF-ZL-462x133Y	CF4.62"	CF1.33"	8.43	15.75	M4	19.10
CF-ZL-462x212Y	CF4.62"	CF2.12"	8.43	25.40	M6	19.10
CF-ZL-462x275Y	CF4.62"	CF2.75"	8.43	38.10	M6	19.10
CF-ZL-462x338Y	CF4.62"	CF3.38"	8.43	50.80	M8	19.10
CF-ZL-600x133Y	CF6.00"	CF1.33"	8.43	15.75	M4	19.80
CF-ZL-600x212Y	CF6.00"	CF2.12"	8.43	25.40	M6	19.80
CF-ZL-600x275Y	CF6.00"	CF2.75"	8.43	38.10	M6	19.80
CF-ZL-600x338Y	CF6.00"	CF3.38"	8.43	50.80	M8	19.80
CF-ZL-600x450Y	CF6.00"	CF4.50"	8.43	63.50	M8	19.80
CF-ZL-600x462Y	CF6.00"	CF4.62"	8.43	76.20	M8	19.80
CF-ZL-675x275Y	CF6.75"	CF2.75"	8.43	38.10	M6	21.34
CF-ZL-675x450Y	CF6.75"	CF4.50"	8.43	63.50	M8	21.34
CF-ZL-800x133Y	CF8.00"	CF1.33"	8.43	15.75	M4	22.35
CF-ZL-800x275Y	CF8.00"	CF2.75"	8.43	38.10	M6	22.35
CF-ZL-800x450Y	CF8.00"	CF4.50"	8.43	63.50	M8	22.35
CF-ZL-800x600Y	CF8.00"	CF6.00"	8.43	101.60	M8	22.35
CF-ZL-1000x133Y	CF10.00"	CF1.33"	8.43	15.75	M4	24.60
CF-ZL-1000x275Y	CF10.00"	CF2.75"	8.43	38.10	M6	24.60
CF-ZL-1000x450Y	CF10.00"	CF4.50"	8.43	63.50	M8	24.60
CF-ZL-1000x600Y	CF10.00"	CF6.00"	8.43	101.60	M8	24.60
CF-ZL-1000x800Y	CF10.00"	CF8.00"	8.43	152.40	M8	24.60
CF-ZL-1325x133Y	CF13.25"	CF1.33"	10.49	15.75	M4	28.45
CF-ZL-1325x275Y	CF13.25"	CF2.75"	10.49	38.10	M6	28.45
CF-ZL-1325x450Y	CF13.25"	CF4.50"	10.49	63.50	M8	28.45
CF-ZL-1325x600Y	CF13.25"	CF6.00"	10.49	101.60	M8	28.45
CF-ZL-1325x800Y	CF13.25"	CF8.00"	10.49	152.40	M8	28.45
CF-ZL-1325x1000Y	CF13.25"	CF10.00"	10.49	203.20	M8	28.45

\*Note: SS 316LN Material Available on Request.

CF