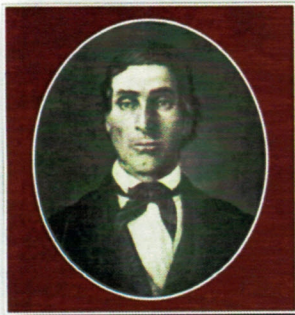


### ACHA MEMBERSHIP FORM

**Mission Statement:** *The mission of Autauga County Heritage Association is to collect, preserve and disseminate information and display artifacts concerning the history of Autauga County and its people.*



Date \_\_\_\_\_

Name \_\_\_\_\_

City \_\_\_\_\_

State \_\_\_\_\_

Zip Code \_\_\_\_\_

Phone # \_\_\_\_\_ Cell # \_\_\_\_\_

Email Address \_\_\_\_\_

- ◇ Individual Membership \$50
- ◇ Couple Membership \$75
- ◇ Contributing Membership \$100
- ◇ Lifetime Membership \$1000

**Make checks payable to ACHA and mail to:**  
102 E, Main Street, Prattville, AL 36067.

You can also join and pay dues online at [www.ataugahistory.org](http://www.ataugahistory.org), or in person at the museum.

**2019 BOARD OF DIRECTORS**

President  
**Don Edgeworth**

Vice-President  
**Terry Young**

Recording Secretary

Corresponding Secretary  
**Merrill Carter**

Membership  
**Melanie Chambliss**

Treasurer  
**Diane Steinhilber**

Historian  
**Ann Boutwell**

Past President  
**Matt Holtzcher**

Directors  
**Belinda Staver**  
**Gary Whiteside**  
**Margie Fallen**  
**Dr. Tom Miller**  
**Elanda Jackson**  
**Brigitte Lee**  
**Marty Pinckard**

Buena Vista Coordinator  
**Darlene Leistner**

**Autauga County Heritage Assoc.**  
102 East Main Street  
Prattville, AL 36067  
334-361-0961

[www.ataugahistory.org](http://www.ataugahistory.org)