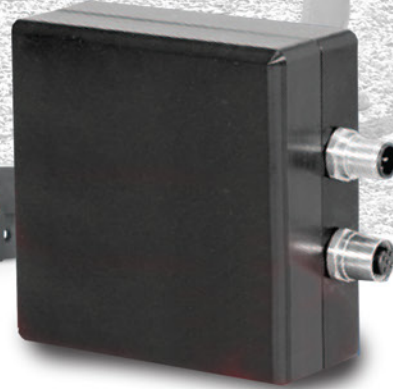


# SEE BETTER THAN EVER

WITH THE NEW EXTENDED TRACK-VISION™ COLLECTION



*Radar Eye*



*Infrared Camera*



*Self Cleaning Set*



*Easysolid Recorder*

**TRACKVISION™**  
POWERED BY ORLACO

# SAFETY CAMERA SPECIALLY DESIGNED FOR HEAVY EQUIPMENT

**Safety is becoming an ever increasing aspect in the industry.**



Blind spots to the front and rear of heavy equipment are the most dangerous areas. Accidents caused by maneuvering, can be large unplanned expenses for a business. A camera system will dramatically reduce these costs.



Concrete trucks backing up often can be very dangerous and cause injury to citizens & workers nearby. A Track-Vision camera reduces operator blind spots and protects you better against a fatality.

When backing up a wheel loader in a quarry or around a crushing plant. Many operators confirmed the lack of visibility behind them, even using their mirrors.



Mining trucks backing up in the blasted area can avoid sharp rocks damaging tires, thus saving thousands of dollars in new tires.



Other applications of cameras are used for precision work. As an example, an excavator operator using a camera on the dipper stick looking at the digging area when visibility is difficult, becomes very handy. Demolition applications with an excavator using a concrete pulverizer at the end of the dipper stick, gives the operator a better understanding of the structure to be torn down.



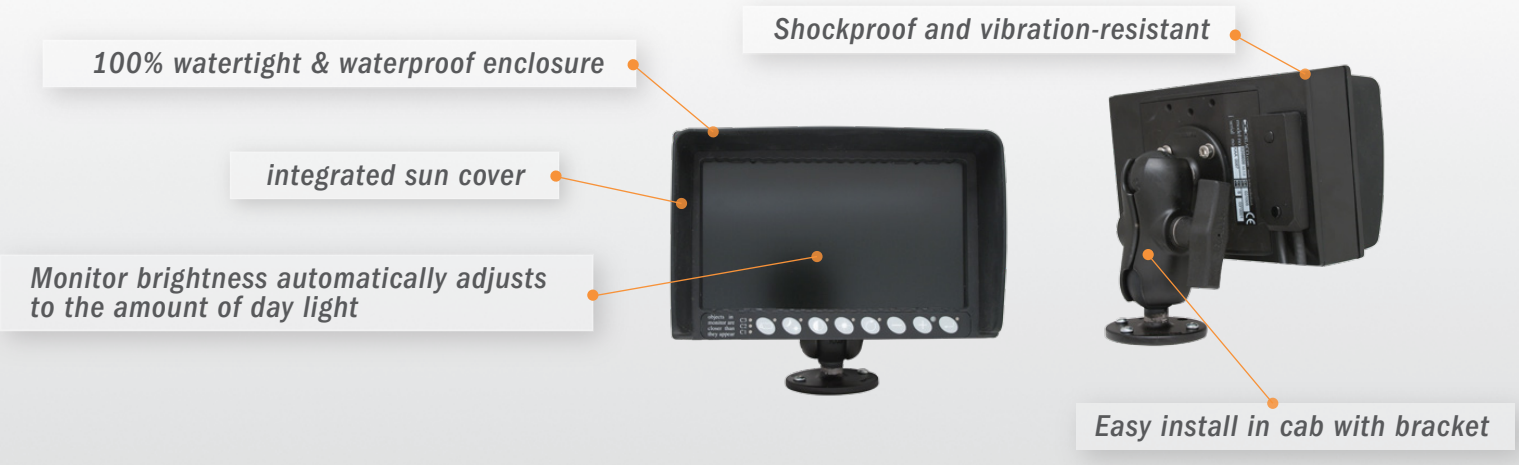
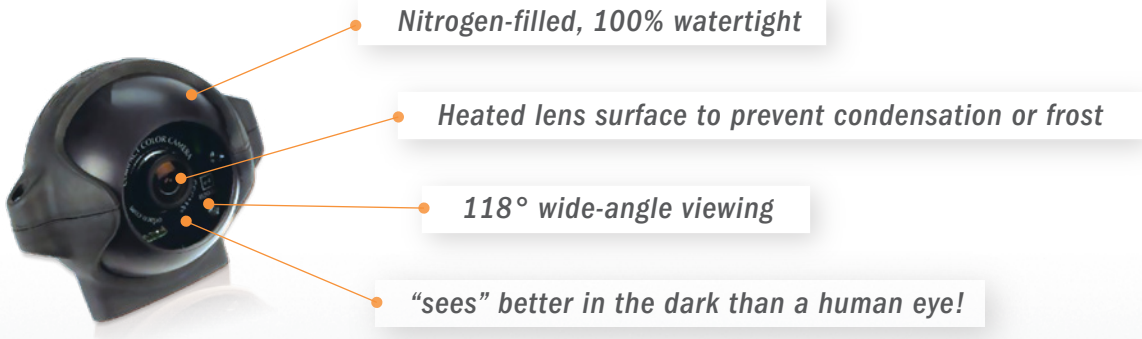
## Applications

Trackvision is available for Heavy equipment like:

Wheel loaders · Backhoe · Excavators · Articulated haulers · Scraper haulers · Motor graders · Skid Steers · Mining equipment · Pavers · Demolition equipment · Crushing & screening plant · and more...

# FEATURES AND BENEFITS

All adjustments are made directly from the **easily installed monitor**. The camera can be set to turn on automatically when backing up and then shut off when the operator shifts into drive. The camera can be left on at all times if necessary.



## 3+2 PREMIUM WARRANTY

### Designed to Last

A standard installation includes one heavy-duty camera mounted on the back of the vehicle and a 7" color flat screen LCD installed in the cab. **Additional cameras can also be added to increase visibility around the vehicle.** Track-Vision is the new generation of on-board safety camera for heavy equipment. Each component has been tested to endure the most severe vibration, dust and temperature fluctuations over years of usage. The camera is also highly accurate in extreme low-light conditions. In fact, it “sees” better in the dark than a human eye! TrackVision is covered by the best warranty with **3 years parts warranty on the camera and 2 years on the monitor.**



TRV - 402320  
Camera protective hood cover

# TRV - 1000 - 1 - 118 Track-Vision™ Safety Camera Complete Kit



The kit includes:

- 1 LED (7" Color flat screen) with 4 meters (13') Cable
- 1 Heavy Duty color camera
- Cable Assembly - 11 meters (36')
- Bracket and Harness Assembly

## Special kit for Skid Steers

TRV 1000-1-SKD

**Optional cameras allow you to install up to 4 cameras on the same monitor!**

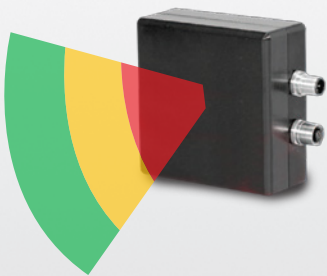
TRV - 1000 - 2 - 118\* **2<sup>nd</sup> Camera**

TRV - 1000 - 3 - 118† **3<sup>rd</sup> Camera**

TRV - 1000 - 4 - 118† **4<sup>th</sup> Camera**

## Wireless Camera option

TRV - 4091



## Radar Eye

TRV 1000-1-118-RADAR

The pulsed-time radar systems detect stationary as well as moving objects in a designated coverage area.



## Infrared Camera

TRV - 146230

Camera AMOS 118° IR LED NTSC, 15 High Power Infrared LEDs allows you to see in the darkest conditions.



## EasySolid Recorder

TRV - 000200

Includes 32GB CF-card for up to 72 hours of storage.



## All Time Vision Camera (ATVC)

TRV - 400160

Camera lens is built in a glass tube which can remotely clean itself.



Website & video presentation  
[www.track-vision.com](http://www.track-vision.com)

## Want to see the product

Contact us for a live presentation

## Buying a new machine?

Ask your dealer to install a Track-Vision or contact us for more details about it.



Your local RMT Track-Vision dealer is:

RMT Equipment Inc.  
370 Labelle, Suite 114  
Laval, QC, Canada H7P 2P1  
**Toll free: 1 800 648-8132**  
[www.track-vision.com](http://www.track-vision.com)  
[www.rmtequip.com](http://www.rmtequip.com)



\*Including: Cameras with cables and Multi-Cam switcher  
†Including: Camera with cable