



# HERE & NOW



## First Presbyterian Church



Volume 67, Issue 5

May 2020

### A MOTHER'S BEATITUDE...

*Blessed is the mother who understands her child  
For she shall inherit a kingdom of memories.  
Blessed is the mother who knows how to comfort,  
For she shall possess a child's devotion.  
Blessed is the mother who guides by the path of righteousness,  
For she shall be proud of her offspring.  
Blessed is the mother who is never shocked,  
For she shall receive confidences.  
Blessed is the mother who teaches respect,  
For she shall be respected.  
Blessed is the mother who emphasizes the good  
And minimizes the bad, for in like manner  
The child shall make evaluations.  
Blessed is the mother who treats her child as she would be treated,  
For her home shall be filled with happiness.  
Blessed is the mother who answers simply the startling questions  
For she shall be trusted.  
Blessed is the mother who has character strong  
Enough to withstand the thoughtless remarks  
And resentments of the growing child,  
For, again, in due time, she shall be honored.*

~ Lenora Zearfoss

**Happy Mother's Day ~ May 10th**

### Inside this issue:

<b>A Mother's Beatitude</b>	<b>1</b>
<b>2020 Graduation</b>	<b>2</b>
<b>Pastor's Message</b>	<b>3-4</b>
<b>OGHS</b>	<b>4</b>
<b>Summer Music</b>	<b>5</b>
<b>Outdoor Worship</b>	<b>5</b>
<b>Thank You</b>	<b>5</b>
<b>Christian Ed.</b>	<b>6</b>
<b>Child Care Center</b>	<b>7</b>
<b>Parish Nurse</b>	<b>8-9</b>
<b>Grief During Pandemic</b>	<b>10-11</b>
<b>Mission &amp; Outreach</b>	<b>11</b>
<b>Session Highlights</b>	<b>12-13</b>
<b>Westminster Chimes</b>	<b>14</b>
<b>Birthdays &amp; Anniversaries</b>	<b>15</b>
<b>May Fun Facts</b>	<b>16</b>
<b>Family News</b>	<b>17</b>
<b>Easter Memorials</b>	<b>17</b>
<b>Staff</b>	<b>17</b>



### Abby Bjornson



Abby Bjornson is the daughter of John and Jodi Bjornson, and will be graduating from Legacy High School. She is an active Deacon with First Presbyterian Church. Abby will be attending the University of North Dakota in the Fall.

### Mallory Henriksen



Mallory Henriksen is the daughter of Chris and Dawn Henriksen. Mallory will graduate from Bismarck High School, and plans to attend North Dakota State University in the fall majoring in Pharmacy. She is an active member of the PresbyTeens.





## PASTOR LEANNE'S MESSAGE...

### *Erring*



A long time ago, a professor told my class, “sometimes you won’t be sure what the right thing to do is... so, when you decide, always err on the side of love.”

Lately, there has been a lot of conversation about “reopening” – reopening business, reopening the economy, and reopening churches. I have been asked by many folks when our church will reopen, so I thought I would give you as much information as I have now. As you will see, I cannot give you a definite date, because I cannot predict what this virus will do here in North Dakota.

Like all of you, I am watching, reading and listening... carefully - not reactively to every single post on Facebook or to every soundbite on the nightly news, but to experts – scientists, medical researchers, government health officials. I am following statistical trends and gathering information from multiple sources on what they mean for us. And I am sure of one thing: *I will not be opening the church as long as the number of COVID19 cases continue to rise in North Dakota.* In the last weeks, I have watched the national COVID19 map, as the states closest to us succumbed, one by one, to the climbing of diagnosed cases, going from light yellow to orange, leaving North Dakota, Montana and Wyoming in a cluster of states that have under a 1000 diagnosed cases. Compared to other places, we have not felt the full impact of what this virus can do – and I pray that we will not. But as the virus is still on the rise, I do not expect us to reopen in the month of May. So far, no one has produced a model that is guaranteed to give us an accurate timeline for re-opening. As Dr. Fauci said, “the virus sets the timeline”.

The truth is that, even with the chaos of public information and anxiety over the national economy, we at First Presbyterian are blessed with a relative security zone in which to make good choices. We are a solid church, with committed and bonded members – we have already gone through our storms and know how to rally when time call for it. Our people are not going to disappear or fail to return when this pandemic passes – we do not face death as some smaller churches do. AND we have such great resources and gifts among us, that I have been amazed at the willing adaptability of our people, and our ongoing faithfulness in giving. Our session has made some incredibly wise decisions that will keep our ministries, including our DayCare solvent; if your heart has been anxious that this virus could deal a blow to our people, our spirit or our finances, rest assured – we are in a good place to make decisions and having our door shut for a while longer will not destroy us in the least. We have time to make this decision carefully and for the right reasons.

And, you may want to know that when we DO return, it will not be back to life as usual – we will have to consider a phase-in plan, keeping in mind that there is a possibility of a resurgence of this virus in the fall. At first, we will still need to practice social-distancing and stay 6 feet apart which will affect the choir, Fellowship, Christian education, and Bell Choir activities. We will still have to be leery of physical contact, and our sanitation practices will need to continue being vigilant. We will have to make our peace with Zoom. We won’t be able to “pass the plate” or share communion in our traditional way. Perhaps we will consider two smaller services so that we can “stretch out more” - the reopening plan is still forming in my head, and I am guided by some creative and cautious thinkers; quite confident that we can make smart and creative decisions.

So, what will drive my decision about re-opening? This: a long time ago, a professor told my class, “sometimes you won’t be sure what the right thing to do is... so, when you decide, always err on the side of love.” That’s my mantra – I know that I can’t make a perfect decision with a guaranteed outcome, so I will err on the side of love. And this is what love says to me: err on the side of caution, because in this case, caution is







## **PASTOR LEANNE'S MESSAGE...**

love. Better to keep the doors shut a couple of weeks too long than to open them to soon in response to pressure or out of fear. My former Presbytery is located in Albany, Georgia, where two funerals (just before the shut-down) fostered a hotbed of COVID19 virus that has decimated the medical facilities there and threatened the lives of people I love. That has really impressed me. If our church reopened too quickly, and became the site of a resurgence in COVID19 numbers in our community or caused loss of lives in our congregation or beyond, I could not live with that. No, I will err on the side of caution, because in this case, as I consider the graying demographics of our people, I am convinced that caution is love. The bottom line: I can't set a date for re-opening; I can tell you this: I do not feel fear, nor am I acting impulsively based on fear - caution is love. We have yet to determine when re-opening will be the right thing to do.

So that's my thinking. I hope it helps to know how my head works: If I am going to err, it will be on the side of love.



*More Later....Leanne*

## **ONE GREAT HOUR OF SHARING...**

Since we remain uncertain when we will gather as a congregation in the Sanctuary again, the Stewardship Committee is asking church members to consider mailing in gifts to **One Great Hour of Sharing** as their personal circumstances allow. **One Great Hour of Sharing (OGHS)** is fueling the Presbyterian response to the COVID-19 pandemic. The three ministries supported by **OGHS** are helping to fight the spread of the disease and ease pain and suffering around the world. *Presbyterian Disaster Assistance* is providing grants and guidance across the globe to communities hit hardest by the Coronavirus. The *Presbyterian Hunger Program* is helping with the safe delivery of food to those in need. A grant from *Self Development of People* built-up We the People of Detroit allowing them to address water shortages that were preventing people in the inner city from washing their hands to slow the spread of COVID-19. if you are able to make a gift to One Great Hour of Sharing at this time, you can send a check to the church office and list OGHS on the memo line.





## **SAVE THE DATE...**

As some of you know, the Membership Committee plans to co-host the outdoor worship service and picnic on Sunday, July 12th at New Generations Park in Bismarck. Hopefully, it will be safe to have the event. If held, Bismarck, Mandan, Wilton and Glencoe may all participate in the service. A picnic will follow. A splash pad and playground equipment are available for use. The picnic will be potluck with catered chicken and rolls, as usual. Please save the date in the event we use it as planned.



## **OUTREACH THANKS YOU...**



Thanks to all who were able to donate paper towels and tissues for the Child Care Center during March. While the church was closed due to the virus, the Child Care Center was able to stay open, so your generous contributions are very much appreciated.

The fish-themed snack collection that was to be held during April is on hold until a future date.

## **SUMMER MUSIC...**

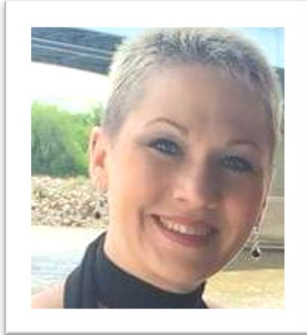
The Worship & Music Committee invites members of all ages to share your talents by participating in special music during worship services throughout the upcoming summer. There are many ways to get involved; you can sing with a group, sing a solo, or play a musical instrument.

We hope that we are able to join together in worship soon. As soon as we are able to meet again, there will be a sign-up sheet for the summer music with dates available to showcase your talents. Please stay tuned for available dates, and we look forward to seeing you soon!





## CHRISTIAN EDUCATION...



*How do we connect with our people and youth without gathering?*

*What are the needs of our teenagers and their families?*

*How do we support college students coming home?*

*What support do our families need?*

*And how do we do all this while keeping everyone, yourself and our own family members safe?*

“Social distancing” has now become the term for 2020. The big question to ALL of us Youth Directors is what does youth ministry look like during a pandemic. This whole experience highlights how connected we really are. How, in time when we’re asked to distance ourselves, we crave connection.

For young people, this may add a greater level of anxiety, too. While getting extra days off of school and sleeping in as late as they want might have sounded fun in the beginning, it does bring big questions about teaching and learning spectrums, sadness over sports and events being cancelled, and uncertainty that puts everyone on edge.

I want to reassure you, through all of this, I am here for all of you! If there is anything I, the Christian Education Committee, the church or Pastor Leanne can do to help you through these trying times, please let us know. We have learned to become more “tech savvy” than we ever expected to be, and more creative than I thought possible to try and keep things fresh.

As of right now, retreats and trips are on hold until it is safe and we feel comfortable with the safety of our youth. Stay tuned to emails, postcards, and newsletters for all updated information.

The last week of April, I attended an online Youth Directors Forum hosted by Princeton Theological Institute regarding ministering to our youth during a pandemic. One word that really stuck out to me is the word **Vulnerable**. I believe the pandemic has made us all vulnerable. It has ripped everything we know and how we do everything and made us susceptible to risks. And I learned that it is ok to fail in your vulnerability. You learn, reframe and pivot to make things work and make them better. We will come back, and everything will be better.

This is not what we planned for....this is not where we thought we would ever be. Learn to have patience and grace with yourself and those around you. We WILL get through.

Until we are able to meet again...stay safe and healthy, and I miss you all!

*Charee*





## **CHILD CARE CENTER...**

### ***WHATS HAPPENING AT THE CHILD CARE CENTER DURING THE COVID 19 PANDEMIC?***

Since March 16 the child care center has gone through a few phases to provide a service for our frontline workers and our essential care workers.

First above all the hectic hours and writing for funds and following the guidelines and regulations during this time we as board members of the Child Care Center want to give a: BIG THANK YOU TO SHAWN, DIRECTOR OF THE CHILD CARE, VANESSA, ASSISTANT DIRECTOR FOR ALL THE HARD WORK THEY HAVE BEEN DOING DURING THESE PAST EIGHT WEEKS TO MAINTAIN CHILD CARE SERVICE FOR OUR FRONTLINE WORKERS AND ESSENTIAL WORKERS. ANOTHER THANK YOU TO ALL THE EMPLOYEES WHO HAVE LEFT THEIR FAMILIES TO PROVIDE CHILD CARE SERVICE AS WELL.

Secondly to maintain this service the Child Care was approved to receive funds from the Department of Health and Human Services during the pandemic because we serve the families of front line workers and essential employees. The Emergency Grant will pay us \$139.00 per week for the number of children we are licensed for until the end of May. The total amount we will approximately receive is \$41,700.00 This grant doesn't put a limit of how many children we have; the regulations we must follow to maintain this grant is to follow the guidelines for social distancing, serve families of frontline workers and essential workers, 10 people in a group, take temps and wash hands before admission for the day. We are very happy to receive these extra funds.

Third the PPP Grant/loan (Payroll Protective Program) application was completed by Vickie Haas, Laura Adair and Bob Tonolli for the FPC staff and CCC staff to receive these funds. The grant was approved and the Child Care Center will receive over \$96,000.00. Thank you for applying for this grant/loan this will help employees at the child care center to remain on payroll.

Last but not least we are so grateful for the technology we have during this time. We are able to continue to meet every month to serve our Child Care Center and meet the criteria of our mission of the Child Care Center and First Presbyterian Church.

We miss seeing and visiting with the child care center employees, children and all the First Presbyterian Church Staff. We have all of you in our prayers and we ask that you all stay safe and well. We hope to see you in person soon rather than the computer monitor.

God Bless, Be Safe and Stay Well

Child Care Center Board Members





## **NURSE'S NOTES...**

### ***Greeting First Presbyterian Church***

The Coronavirus pandemic has changed a lot of our lives in these past months. We are a faith family who cares about each other and I witness this every day. I received an email from Karla Cazer, MS, GCNS-BC, RN-BC, CRCN from Geriatrics/Faith Community Nursing Center. I would like to share this with you:

### ***Holding Space Providing a Space for God's Spirit to Enter In***

#### **What does it mean to hold space for someone?**

1. Walking alongside a person or family in whatever journey they're on without judgement, projection or inadequacy, trying to fix, or trying to impact the outcome.
2. To truly support another in their own growth or transformation:  
**Avoid:** Taking their power away; shaming them; overwhelming them
3. To truly support another in their own growth and transformation:  
**Do:** Step to the side for their choices; offer unconditional love and support; give gentle guidance when needed; ensure the feeling of safety with your presence
4. Holding space is not something that's exclusive to nurses, it's something all of us can do for one another. Holding space is providing a place for God's Spirit to enter in.
5. Every day is an opportunity to hold space for the people around us.

#### **Tips to help you hold space for others:**

1. Give people permission to trust their own intuition and wisdom.
2. Give people only as much information as they can handle.
3. Don't take power away.
4. Keep your ego out of it.
5. Make people feel safe enough to fail.
6. Give guidance and help with humility and thoughtfulness.
7. Create a container for Complex emotions, fear, trauma, etc.
8. Allow people to make different decisions and to have different experiences than you would.

#### **What Bible verse best captures for you the essence for "holding space" for someone?**

Possibilities include:

Psalm 43:1	2 Timothy 1:7
Isaiah 41:10	Psalm 27:1
Deuteronomy 31:8	John 14:27
Matthew 5:4	Psalm 55:22
Romans 8:37-39	

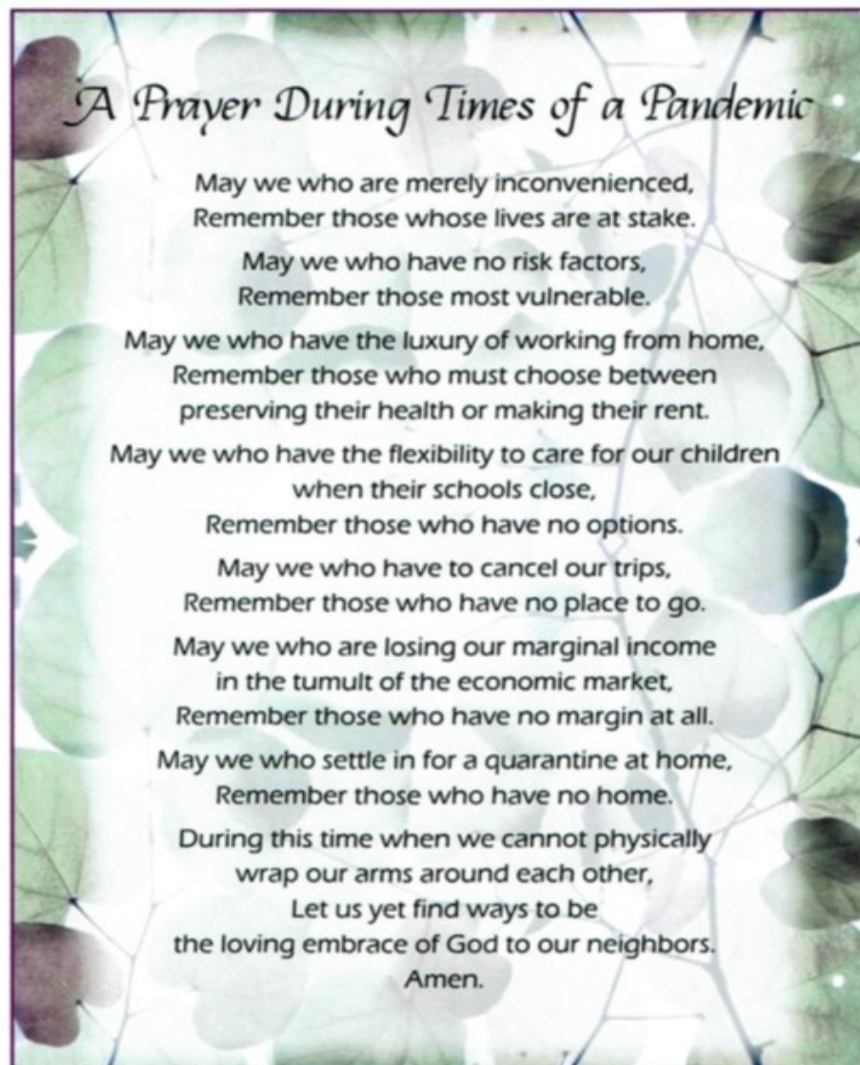
Source: Heather Plett, May 8th, 2016, <https://upliftconnect.com/hold-space/>







## **NURSE'S NOTES (cont.)...**



### ***Wanona's Whacky Corner: Joke of the Month:***

*A frog goes into a bank and approaches the teller. He can see from her nameplate that her name is Patty Whack. "Miss Whack, I'd like to get a \$30,000 loan to take a holiday." Patty looks at the frog in disbelief and asks his name. The frog says his name is Kermit Jagger, his dad is Mick Jagger, and that it's okay, he knows the bank manager. Patty explains that he will need to secure the loan with some collateral. The frog says, "Sure. I have this," and produces a tiny porcelain elephant, about an inch tall, bright pink and perfectly formed. Very confused, Patty explains that she'll have to consult with the bank manager and disappears into a back office. She finds the manager and says, "There's a frog called Kermit Jagger out there who claims to know you and wants to borrow \$30,000, and he wants to use this as collateral." She holds up the tiny pink elephant. "I mean, what in the world is this?"*

*The bank manager looks back at her and says, "It's a knickknack, Patty Whack. Give the frog a loan. His old man's a Rolling Stone."*

*(You sang it, didn't you? Yeah, I know you did!)*





## MANAGING GRIEF DURING A PANDEMIC...



by **Doreen Marshall, Ph.D**  
**Vice President of Mission Engagement, AFSP**

Many of us are grieving right now. We are grieving people we have lost, in many instances not having had the opportunity to say goodbye or to be with them in their final moments. We are grieving not being able to have our in-person presence to support one another right now. We are grieving our rituals, our routines and the familiarity of our day-to-day assumptions. For those of us who have a history with grief (especially the unexpected kind), we may

be having grief of those former losses stirred and awakened. This week alone, I had two separate dreams connected to previous losses (a death and a miscarriage). I had to remind myself when I woke that it was not those events experiencing.

Grief can be messy, it's not linear, as in "when I get through this particular feeling, I'm done with that." It is cyclical and lingers around important events, words not said, certain songs, and moments captured like photographs in our minds. It is a place we can choose to visit or ignore, though it resides in the background as if waiting for us to notice.

If you are experiencing grief right now, here are some things you might remind yourself:

- \* **There are different ways to say goodbye.** Unexpected endings tend to bring strong emotions, often anchored in both the present and the past, when we may have felt abandoned or left behind. There are different ways to say goodbye. Write a letter to your loved one, even if you end up being the only one sees it. If your loved one has died or is in a place you can't visit, hold an intention for them in your mind, and say it aloud as you think of them throughout the day. One of my favorites is, "May you feel my love for you and be surrounded by peace."
- \* **"The last sentence of the book doesn't rewrite the entire story."** Years ago, following the loss of someone dear to me, a wise person shared these words with me. It reminded me that even though I was unable to be with my loved one when he died, I had a book full of lines to draw upon that were the story of our life together and of our relationship. Many of those lines were expressions of our love, moments we shared together, conversations and memories. Remembering these feelings and these moments is how we get a sense of who the individual was; who we were with them; and what the relationship was—all of which surpasses their final moments. Right now is a good time to reflect on those earlier, better memories as best as you can, to remind yourself of the full picture of their lives and your connection.
- \* **Connections can deepen over time, even after loss.** My father died 14 years ago this week. In the early days and weeks following his death, all I could remember was the image of him sick, and the trauma I associated with that. As time passed, my memories of him unexpectedly became richer and more accessible than they were in those days. The images of him being sick began to fade away. I can now more easily remember his laugh and his jokes, and recognize the similarity between my daughter's eyes and his. I also feel more connected to how he must have felt as a parent, now that I am one, myself. These are newer, deeper connections to my father, ones I couldn't have anticipated at the time he died.
- \* **You are not alone in your grief.** Know that others are also experiencing grief right now, and that there is support available. Online grief support, and grief support provided by mental health professionals, hospice centers and faith groups are all accessible to you, many via telehealth and other virtual platforms.





## **MANAGING GRIEF DURING A PANDEMIC...**

You can learn about options for grief support by connecting to your local mental health providers, faith organizations or hospice, or through one of the following national resources:

National Suicide Prevention Lifeline: 1-800-273-TALK (8255)

Crisis Text Line: text TALK to 741741

If you are struggling with the loss of a loved one to suicide, even one that occurred prior to COVID-19, AFSP has our Healing Conversations program, which provides peer-to-peer phone or video contact and resources for those struggling with suicide loss.

Please know, at this time, that others who have traveled the roads of grief are here for you and can serve as guides. Look to them for hope, healing and comfort during this difficult time, and know that days are ahead of you in which the intensity of your grief will be lessened, and replaced by loving memories.

## **MISSION AND OUTREACH COMMITTEE...**

The Mission and Outreach Committee is hosting a towel drive. Buy a towel set to help families in the Students in Transition Homeless Program. Choose a business to buy from (links below) and have them sent to:

Sherrice Roness  
SIT Coordinator  
806 N Washington St.  
Bismarck, ND 58501

This fundraiser is organized by Michelle Ragan, Bismarck Public Schools, and Becky Reidinger, U-Mary, as part of the Women's Leadership Program through the ND Women's Business Center.

Please DO NOT drop off towel sets in person. Thanks for your support.

Target: <http://www.target.com/gift-registry/gift/SITTowelDrive>

Amazon: [https://www.amazon.com/hz/wishlist/ls/1IDDUN99BF370?ref\\_=wl\\_share](https://www.amazon.com/hz/wishlist/ls/1IDDUN99BF370?ref_=wl_share)

Walmart:

[www.walmart.com/lists/view-events-registry-items?id=48fe13a3-92d7-49bb-87e4-a7f73c830723](http://www.walmart.com/lists/view-events-registry-items?id=48fe13a3-92d7-49bb-87e4-a7f73c830723)





# Session Highlights

**April 28th, 2020**  
via Zoom

## **CLERK'S REPORT**

The death of William Toay, April 14th was reported. Total membership is 355.

## **FINANCIAL REPORT**

Total Income YTD Actual	\$155,175	Budget \$130,321
Total Expense YTD Actual	\$159,511	Budget \$156,210
NET Income	-\$ 4,336	Budget -\$ 25,889
Unrestricted General Fund	\$202,063.53	

Pledged income is greater than the amount budgeted due to pre-paid full pledges of \$47,104. The church received \$152,900 from the SBA Payroll Protection Program.

## **MODERATOR'S REPORT**

Pastor Leanne presented a three-phase re-opening strategy, with social distancing in services. Services would still be available online. Rationale for re-opening is based on no new cases of COVID-19 in Burleigh County.

## **STANDING COMMITTEE REPORTS (from committee minutes and meeting)**

**Administrative and Personnel**—Staff evaluations will be completed at a later time.

**Business and Finance**—Session approved the use of credit/debit cards for payment to FPC, administered by the Presbyterian Foundation. This would be set up on the church website. Eide Bailly will be hired to conduct an audit. Investment income continues to decline.

**Christian Education**—Charee Linton, C.E. Director, has sent gift cards and notes to all children/youth of the church. Sunday School lessons are sent via email to the families of each child registered. Confirmation is on hold at the moment, but faith statements are being written.

**Membership**—The committee has called all of the church members (with the exception of Deacons and Elders) and will continue to do so in May. It is uncertain at this time if the outdoor picnic/service will be held with all 4 churches participating on July 12th. Plans are being made to deliver the UPPER ROOM to members who request them.

**Mission/Outreach**—Session approved a change in the eligibility for scholarships by including active participants at an under resourced PCUSA church (such as Glencoe or Wilton). The committee donated \$350 to Ministry on the Margins and to Heaven's Helpers Soup Café.

**Property and Equipment**—The committee will be reviewing the HVAC consultant report. \$7,635 was paid to the consultants in March.

**Stewardship**—The Planned Giving presentation will be held this fall. A letter to the congregation will be sent in the near future.







# Session Highlights

**Worship and Music**—The committee will investigate different ways to serve communion.

**Board of Deacons**—The Recording Committee continues to deliver CD's of the worship service. Deacons have been sending cards and calling church members.

**Child Care Center**—Fewer children are coming to the center. The financial losses may be offset by grants from the Childcare Emergency Operating Grant and the Payroll Protection Plan.

## **NEW BUSINESS**

Beginning in May, Session meetings will begin at 6:30 p.m. instead of 6:00 p.m. and continue through the summer before returning to the 6:00 p.m. time in September.

Alice Nix, Clerk of Session



## **FPC Youth and Families Worshipping at Home**





## A “NOTE” OF APPRECIATION...

When rehearsals began last September for our 46<sup>th</sup> season, little did we know how short it would be! Even so, we were able to participate in six worship services ringing a total of 14 pieces. And we were also blessed to be able to travel in early March to the handbell festival in Minnesota for which we had been preparing over the course of two years.

Westminster Chimes would like to extend thanks to the congregation for their support, prayers, and caramel roll purchases. Thank you, too, to Pastor Leanne for her guidance and appreciation and to the Worship and Music Committee for understanding that a handbell program needs care and attention to flourish.

This year's volunteer ringers included Kara Richter, Juanita Hocking, Linda Tonolli, Alice Nix, Kris Ronningen, Tammy Lelm, Pat Keller, Iris Giedd, Kathy Gappert, Rosey Sand, Judy Tschider, Kathy Wachter, Shelly Heilman, Jim Rambo, Rusty Bender and Lael Hoerauf. Also ringing as subs at rehearsals and services were Shawn Deisz, Sue Howard, Arliss Fleming, and Heidi LaBree, members of the Good Shepherd Lutheran Church ensembles. Joining us at the festival were Kara Stewart Richter's sisters Renee Loney and Myra Annan, former members of our church. It has been a real benefit to W.C. to be able to tap into our subs' enthusiasm for ringing.

We look forward to ringing in worship again and in the meantime, keep the music in your hearts and minds.





## **MAY'S BIRTHDAYS & ANNIVERSARIES**

<u><b>BIRTHDAYS</b></u>	<u><b>MAY</b></u>	<u><b>BIRTHDAYS</b></u>	<u><b>MAY</b></u>
Alisha Wohl	1st	Delores James	19th
Gary Thompson	2nd	Saige Klipfel	19th
Mallory Henriksen	2nd	Grayson Hedland	20th
Chris Henriksen	3rd	Ruth Beachey	21st
Kristi Ronningen	3rd	Kathy Wachter	22nd
Magdaline Nji	5th	Mike Lannoye	23rd
Mark Jensen	6th	Marlynn Bonogofsky	24th
Jenni Boeckel	10th	Brooke Lannoye	25th
Tait Ronningen	10th	Laurel Jane Stowell	25th
Paige Pengilly	13th	Vernon Spitzer	25th
Luke Pengilly	13th	Becky Taylor	26th
Barb Satran	14th	Kaydee Gilchrist	26th
Nils Pearson	15th	Muriel Peterson	27th
Tara Fuhrer	15th	Runick Fru Alah	28th
Carol Peterson	17th	Sebastian Charbonneau	30th
Denise Gratz	18th		

### **ANNIVERSARIES**

Fredrick & Alisha Wohl	5/5	JoAnn & William Hodny	5/22
Ron & Neva Carlisle	5/18	Doug & Valerie Sturlaugson	5/29



All birthdays and anniversaries are taken from the information gathered in previous questionnaires. If we made a mistake, or missed you or a loved one, we apologize and ask that you please let us know so we can update our system. If you do not want your birthday listed in a bulletin or newsletter, please let us know that as well. Thank you!





## **MAY FUN FACTS**

### **About the Month of May:**

- ♦ May is the 5th month of the year and has 31 days.
- ♦ May is named for the Roman Goddess Maia, who oversaw the growth of plants.
- ♦ It is the 3rd and last month of the season of Spring.
- ♦ The birthstone of May, the emerald, symbolizes success and love.
- ♦ May in the Northern Hemisphere is similar to November in the Southern Hemisphere.
- ♦ May is considered a bad luck month to get married. There is a poem that says “Marry in May and you’ll rue the day.”
- ♦ In Old English May is called the “month of three milkings” referring to a time when the cows could be milked three times a day.
- ♦ The Indianapolis 500 car race is held each year during this month.
- ♦ The Kentucky Derby, the world’s most famous horse race, is held on the 2nd Sunday of this month.
- ♦ National Police Week—Third week of the month
- ♦ Emergency Medical Services Week—fourth week of month.
- ♦ Get Caught Reading Month
- ♦ National Good Car-Keeping Month
- ♦ Asian American Month
- ♦ National Barbecue Month
- ♦ National Blood Pressure Month

### **Holidays:**

- ♦ School Principals’ Day ~ May 1st
- ♦ May Day ~ May 1st
- ♦ Cinco de Mayo ~ May 5th
- ♦ No Socks Day ~ May 8th
- ♦ Mother’s Day ~ May 10th
- ♦ Armed Forces Day ~ May 16th
- ♦ Memorial Day ~ May 27th

### **May in Other Languages:**

- ♦ Chinese (Mandarin) - wuyue
- ♦ Danish—maj
- ♦ French—mai
- ♦ Italian—maggio
- ♦ Latin—Maius
- ♦ Spanish—mayo





# **FAMILY NEWS**

## **Deaths**

Our deepest sympathies to the family and friends of those who have passed away:

**William “Bill” Toay**

**Boyd Gilchrist**

(Father of Gary Gilchrist)

**Gertrude Hannah**

(Mother of Kathy Wachter)

*“And ye now therefore have sorrow: but I will see you again, and your heart shall rejoice, and your joy no man taketh from you.” ~ John 16:22*



## **EASTER MEMORIALS...**

This year, we were not able to list the Easter Memorial in the Easter bulletin as we were not able to meet in person. Here is this year's Easter Memorials:

### **In memory of:**

Delton Bender  
Colby Gilliland  
Delmar Lewis  
Reynard & Minnie Spitzer  
Tillie Nelson  
Richard Weber  
Alan Wachter  
Lewis Hanna  
Kenneth Klug  
Linda Chapman  
Mardy Chapman  
Don Henriksen

Paul & Jeannette Abrahamson

Roberta Carlisle  
Frieda Acheson

### **Given By:**

Leila Bender & family  
Leila Bender & family  
Letha Lewis  
Vern & Vi Spitzer  
Vern & Vi Spitzer  
Edith Weber  
Kathy Wachter  
Kathy Wachter  
Debra Klug  
Kathy Henriksen  
Kathy Henriksen  
Kathy Henriksen & family

Paul & Connie  
Abrahamson,  
Tom & Donna Idstrom,  
Roger & Susan Meyer  
Ron & Neva Carlisle  
Ron & Neva Carlisle

## **First Presbyterian Church**

17

214 East Thayer Ave.  
Bismarck, ND 58501

Phone: 701-223-6091

E-mail:

firstpresbyterian@fpcbismarck.com  
www.fpcbismarck.com

Sunday Worship Schedule:  
Worship: 10:00 a.m.

Office Hours:

Monday—Friday  
8:00 AM—5:00 PM

**Pastor**

**Rev. Dr. Leanne Simmons**

**Finance Assistant**  
**Vickie Haas**

**Administrative Assistant/  
Youth Christian Ed. Director**  
**Charee Linton**

**Organist**

**Arvy Smith**  
**Gail Snustad**

**Choir Director**  
**Debi Rogers**

**Handbell Ensemble Director**  
**Lael Hoerauf**

**Maintenance Manager**  
**Nathan Peterson**

**Membership Services**  
**Judy Lentz**  
**Shelli Peterson**

**Nursery**  
**Mary Jones**

**Christian Ed. Interns**  
**Mark Jensen ~ Emily Ehrens**

**Child Care Center Director**  
**Shawn Stettner**

**Child Care Assistant Director**  
**Vanessa Hein**