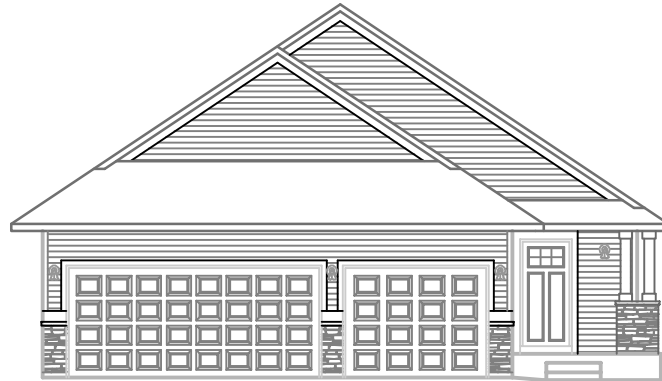
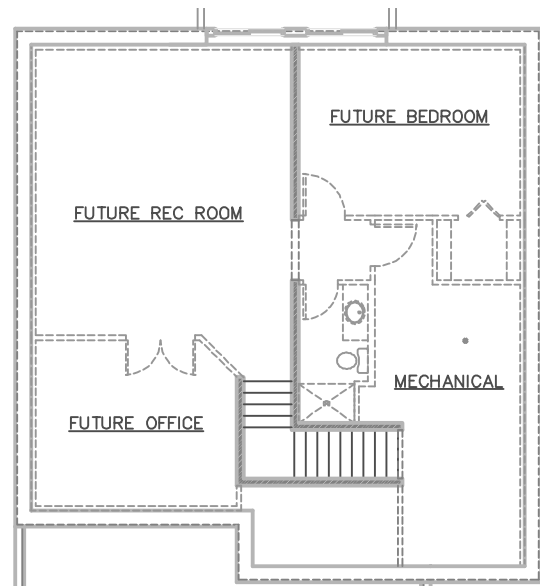
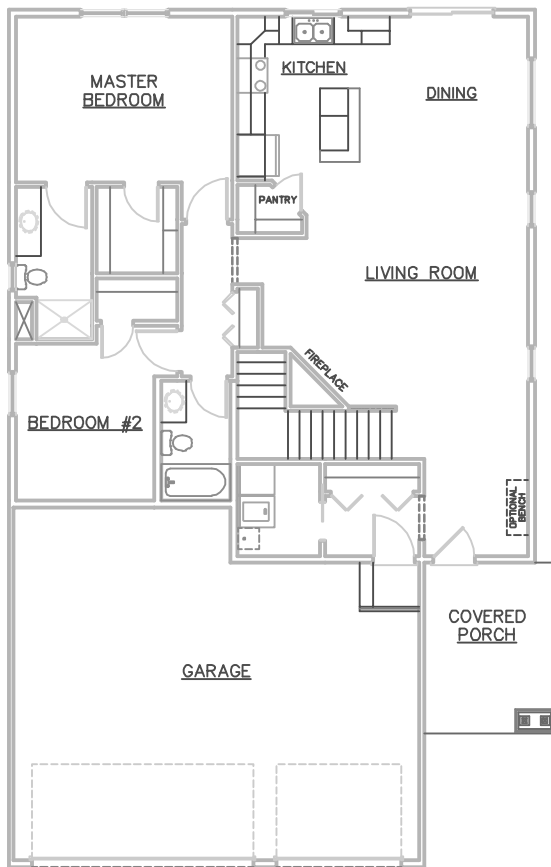


# 148 SANDPIPER CIRCLE



SOME OPTIONS MAY BE SHOWN



- \* 2 BEDROOMS, 2 BATHROOMS
- \* 1,456 SQUARE FEET
- \* OPEN FLOOR PLAN
- \* WALK-IN-CLOSET
- \* COVERED FRONT PORCH

## ROOM SIZES

KITCHEN	10' X 12'
DINING	11' X 11'
LIVING ROOM	17' X 17/21'
MASTER BEDROOM	15'-8" X 12'
BEDROOM #2	10' X 11'-4"



3475 Vermillion Street, Suite 101 ~ Hastings, MN 55033 ~ 651.437.3700 ~ [www.gregjhomes.com](http://www.gregjhomes.com)

Plans and specifications are subject to change without notice. Copyright Greg J Homes of Hastings Inc. 2020