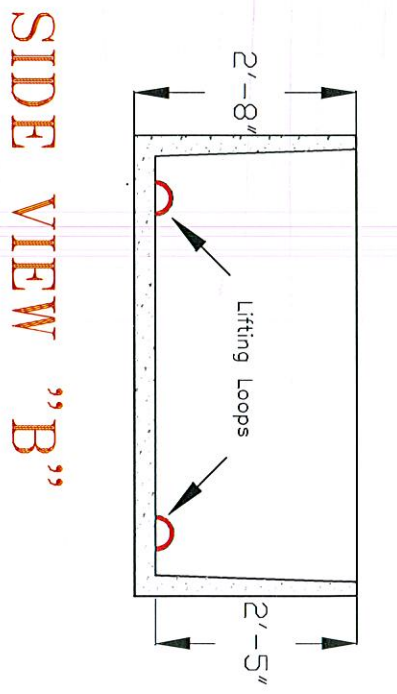
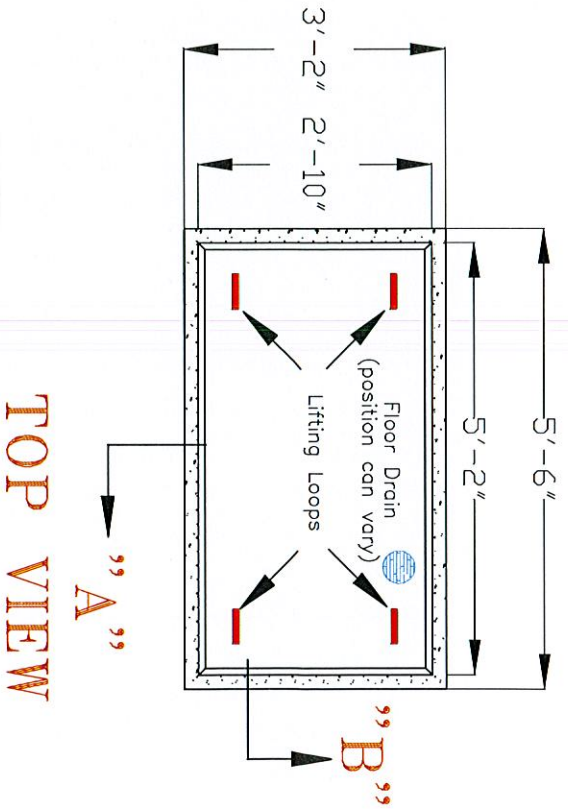
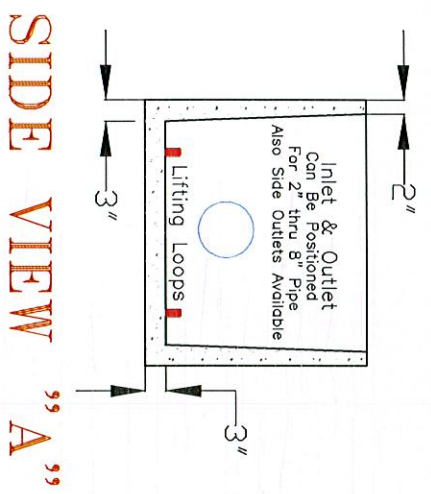


A & L Vault Company

P.O. Box 815
111 E. Pryor St.
Athens, AL 35612

(256) 232-2100
Scale 1/4" = 1"

VAULT CONSTRUCTION FEATURES
 4,000 PSI Fiberglass Reinforced Concrete Mix
 #3 or # 5 Rebar or As Specified
 1-1/4" Lifting Holes
 Pipe Penetrations Sealed with Waterproofing



Please note that the dimensions are typical due to variations during the curing may have minute changes

A&L-6234CV

A&L-6234CV