

For accessories
**new
design**



The most powerful, for swing gates WG20S kit

**Kit for the automation of a residential two-leaf gate,
each leaf measuring up to 4.5 m in width
or weighing up to 450 kg for leaf.**

New:

Compatibility with MhouseKit PF, the kit for Solar power automations, to automate gates without the need for connections to the electrical mains, even in locations far away or difficult to access.

New Design for accessories.

Strength and elegance: WG20S, with its die-cast aluminium casing that will match any style, can open the heaviest gates without effort.

No welding required: adjustable multi-position brackets.

No waiting in front of the gate:

only 20 seconds to open and close. (in perfect installation conditions, making the most of the whole run and with a 90° opening).

Extra safe thanks to the low-voltage connections (24 V), the safety accessories and the automatic obstacle detection feature.

Auto-programming: WG20 automatically calculates the most suitable operating parameters for each gate.

Autodiagnostic system identifies and immediately signals any connection errors or malfunctions.

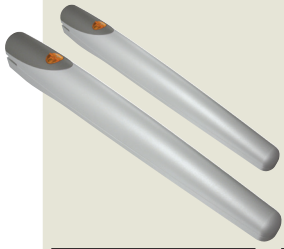
Modular control card with integrated receiver

- 2 speeds
- Timed and adjustable automatic closing function
- Programming of new transmitters (up to 150)
- Adjustable partial opening function
- Pause time adjustment
- Obstacle sensitivity adjustment
- Automatic recognition of NC-NO-8.2 KOhm safety devices, if installed.

Quick motor release for manual gate operation.

No black-out: the buffer batteries guarantee up to ten opening and closing manoeuvres even in the event of power outages (accessory).

Each Kit WG20S contains:



2 WG10SK
Electromechanical worm gear motor with three Mhouse release keys and adjustable mounting brackets included.



2 GTX4 433.92 MHz, 4 button variable code transmitters. Practical wall rest included in the package.



PH100 Pair of wall-mounted autosynchronized photocells.



FL100 Adjustable flashing light, with built-in aerial.



CL20S External control unit for control of WG10SK electromechanical gear motor with integrated 433.92 MHz variable code receiver.

Optional accessories



PF Solar power kit.

PBC Battery charger power supply unit, for PF.



DS1 13-key digital switch with programmable code, via radio.



KS100 Two-position (open/stop) key-operated selector switch with pair of metal keys.



PT50 Two 485 mm high posts including one pair of photocells.

PT100 Two 945 mm high posts including two pairs of photocells.

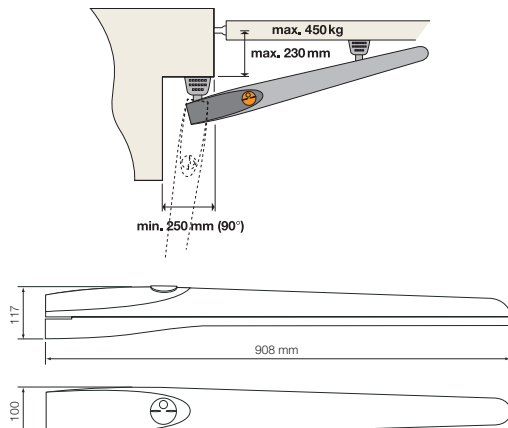
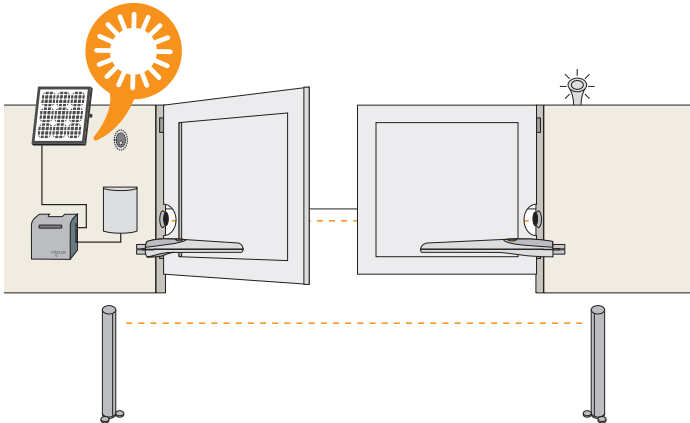


EL1 12 V electric lock interface.



PR1 Buffer battery for emergency power supply.

Installation



Technical characteristics

Power supply (Vac)	110
Power (W)	150
Torque (Nm)	1800
Speed (mm/sec)	0.013 ÷ 0.024
Travel (mm)	540 (480)*
Protection class (IP)	44
Weight (kg)	10
Certification	CE

* Data with opening/closing limit switch between brackets
For updated and complete information, consult the product technical manual.

Packaging characteristics

Package dimensions (mm)	949x391x166
Package weight (kg)	23.25
Palletization (pz)	14
EAN Code	8032595792307

The content of the package may vary: consult the retailer.

