

**ADI**

**Comfort Zone...**



# Lifetime warranty...

## CUSTOMER SERVICE

### A.D.I. ENJOYS AN ENVIABLE REPUTATION FOR ITS CUSTOMER SERVICE.

#### Our Warranty's...

Buying A.D.I. means buying durability. All A.D.I. products are designed to **ANSI/BIFMA** standards and carry a **lifetime warranty** on the steel structure, suspension belts, base, mechanism, casters and gas cylinder, and a 5-year warranty on carded fabrics (normal wear). Big and tall and 24/7 chairs are covered by a 5-year warranty on all parts.

#### People...

At A.D.I., our dedicated customer service team is there to assist you. From product selection to after sales service, from order taking to delivery, we guarantee our people will answer your questions professionally and efficiently.

#### Solutions...

Our technical department handles your specific requests with an eye to detail. Our flexible manufacturing methods enable us to find the best solution for your seating needs.

#### Deliveries...

Our standard delivery program is 10 working days on all chairs. With our quick ship program, most chairs ship in only 72 hours in a wide variety of fabrics, vinyl and leather. You can even customize them with your choice of upholstery.

#### Information...

Using a dynamic database, we store a large amount of information that can be used to produce personalized reports when and where you need it.

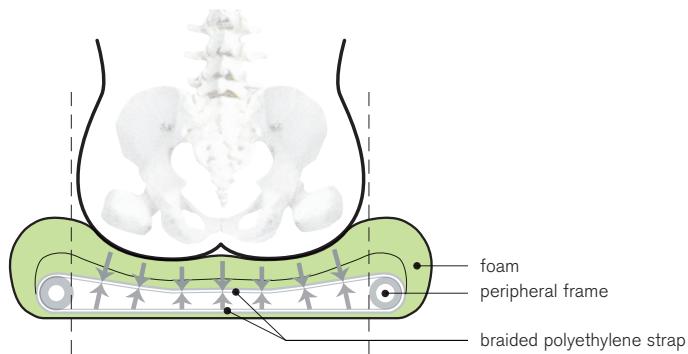
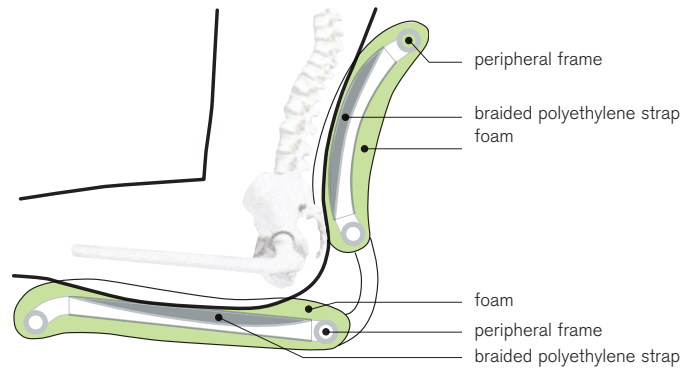


# A company at the cutting edge of ergonomics...



## SUSPENSION SYSTEM

Every A.D.I. chair is manufactured using this highly ergonomic system developed by A.D.I. that frees the body from any contact with a rigid surface. Braided polyethylene straps stretched over a tubular steel frame ensure comfort, lightness and well being.

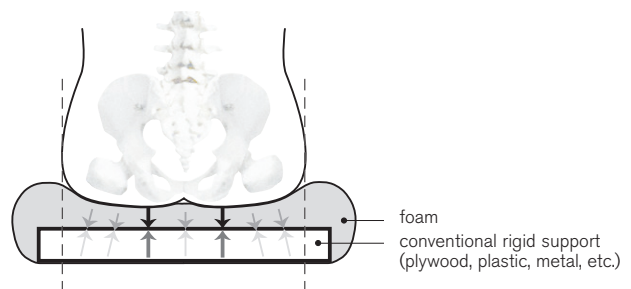


When pressure is exerted, compressing the foam and stretching the elastic straps, there are no rigid surfaces that come into contact with the body. The pressure on the ischia, iliac and vertebrae is relieved by a more homogeneous distribution of forces.

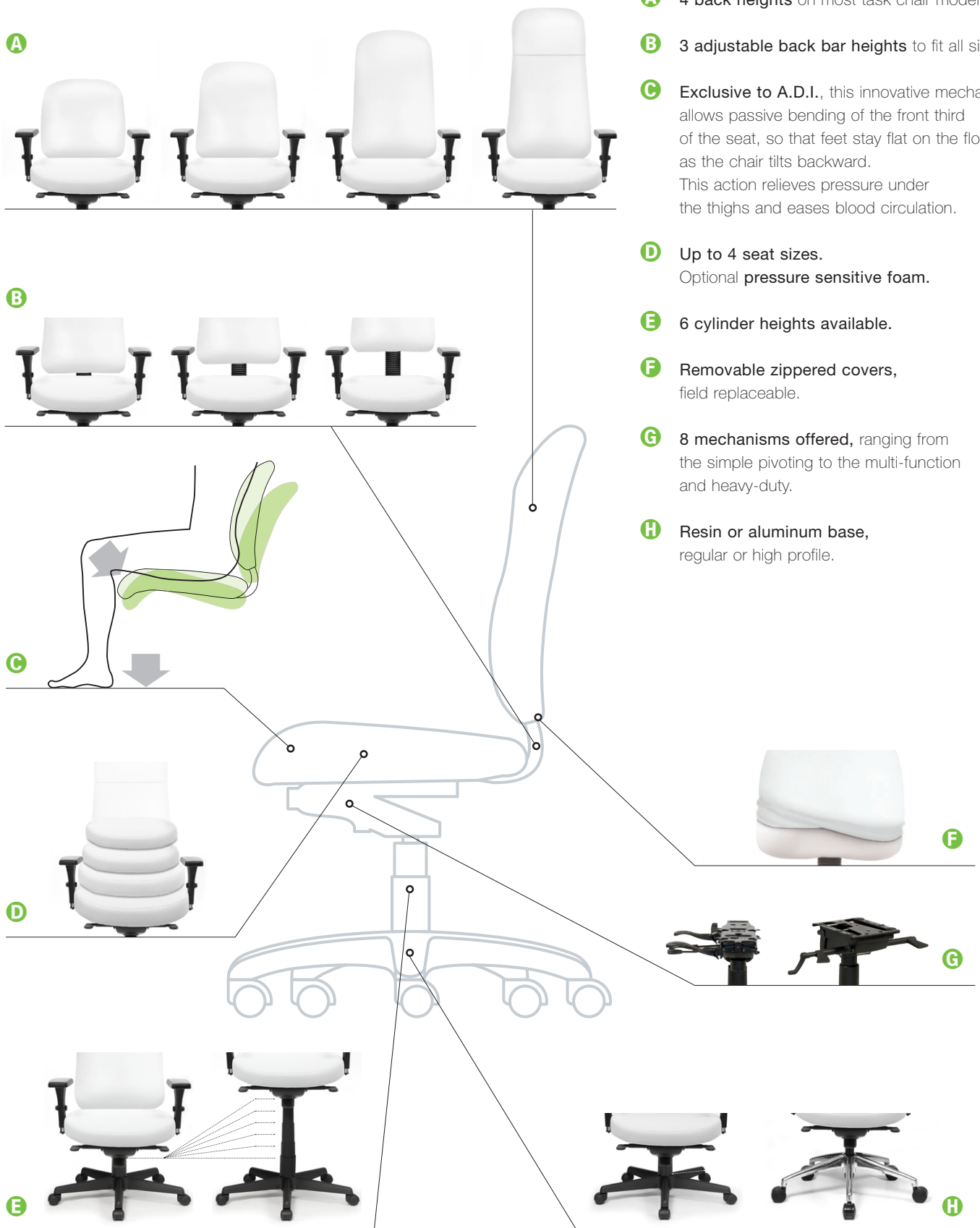


## Conventional technique: Rigid support

After the foam is compressed, the ischia soon detect the rigid support, resulting in discomfort and increased fatigue due to intense local pressure.



# Focused on **solutions...**



**A**

**A** 4 back heights on most task chair models.

**B**

**B** 3 adjustable back bar heights to fit all sizes.

**C**

**C** Exclusive to A.D.I., this innovative mechanism allows passive bending of the front third of the seat, so that feet stay flat on the floor as the chair tilts backward. This action relieves pressure under the thighs and eases blood circulation.

**D**

**D** Up to 4 seat sizes.  
Optional pressure sensitive foam.

**E**

**E** 6 cylinder heights available.

**F** Removable zippered covers,  
field replaceable.

**G** 8 mechanisms offered, ranging from the simple pivoting to the multi-function and heavy-duty.

**H** Resin or aluminum base,  
regular or high profile.

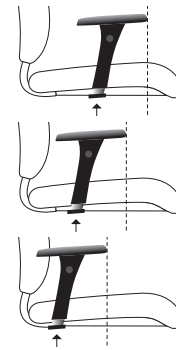
# In constant evolution...

## ARMS

All A.D.I. task chairs may be equipped with fixed or adjustable arms. A unique adjustable bracket allows the arms to be installed at 3 front/back positions along the side of the chair.

The arms are width/height adjustable, and pivot. Optionally, the arm pad may feature a front/back and sideways adjustment.

A swing arm mechanism developed by A.D.I. offers greater freedom of movement, a full 7" radius ideal for reaching keyboards and pointing devices.



Visco-elastic foam optional.

## TAILORED SOLUTIONS

At A.D.I., we constantly search for useful solutions to customer needs. We strive to find and develop features to enhance comfort for all body sizes and morphologies. These solutions are then incorporated in our chair programs to make them easy to specify.

- Inflatable lumbar support on all task chairs
- Multi shift chairs (24/7)
- Big and tall chair (500 lb rated capacity)
- Bariatric stacking chair (26" wide)
- Tail bone cut-outs for sensitive coccyx
- Custom height arm stanchion
- Protective leather cover



## STEEL STRUCTURE

Steel is as resistant as it is malleable, providing a robust yet flexible structure that will embrace and enhance your every movement.



## PROFILE

Founded in 1986, this small company has gone to accomplish BIG things. Focused on ergonomics, it has developed expertise over the years in the design and manufacture of chairs adapted to the user's morphology.

In a manufacturing space of 50,000 square feet, the ADI team strives to produce some 25 families of chairs destined for the North American commercial and institutional markets. Its vast network of knowledgeable and experienced manufacturing agents maintains a dynamic and proactive presence within the dealer, designer and architect communities.

At A.D.I., we believe that no chair can be adapted to fit any body type, use or environment. Every individual has unique physical characteristics. To meet one's precise needs in a specific environment, we must find specific solutions and our products program reflects this. A.D.I. keeps investing in research and development to be on the cutting edge of the market when it comes to the evolution of ergonomic standards.



[www.adi-artdesign.com](http://www.adi-artdesign.com)

## ENVIRONMENT

A.D.I. is dedicated to a program of global environmental management encompassing day to day activities in the factory as well as those related to the lifecycle of our products. These safety practices regarding the environment and sustainability are reviewed on an on-going basis and are implemented at 3 different levels.

### Product Design

Steel is the major component of our products, representing 80% of the weight of our chairs. We do not use wood in the internal infrastructure. Overall, 96% of the weight content of the chair is recyclable. The components of the chairs are designed to be easily dismantled. We do not use staples on the covers. All of our products carry a lifetime warranty and can be recovered on-site thereby extending their useful life.

### Manufacturing Processes

No toxic solvents are used during the manufacturing process. We recover and control all emissions and dust in the factory to eliminate air pollution. Industrial wastes such as steel, paper and cardboard are recycled using local firms.

### Purchasing

We purchase components made up of a high percentage of recycled materials. Steel is made up of 35% recycled material and cardboard or packing has 90%, while plastic has 20% and aluminum 60%. We offer a line of fabrics that is 100% recycled. Overall, 31% of the chairs we make are made of post-industrial and post-consumer recycled materials.

A.D.I. is **Greenguard** certified for all of our upholstered products. Our firm complies with the **ISO-14001:2004** environmental standard as well as the **ISO-9001:2008** quality standard. All our products are qualified for situations that require **LEED** certification.



ISO-9001:2008



ISO-14001:2004



ART DESIGN INTERNATIONAL, 3450, 1<sup>st</sup> Street, St-Hubert (Quebec), Canada J3Y 8Y5  
Tel.: (450) 926-1004 / (888) 926-1004 • Fax: (450) 926-0013 / (888) 407-6435

**SHOWROOMS:** Atlanta, Chicago, Minneapolis, Montreal, Ottawa, Portland, San Francisco, Toronto, Washington