

CF Flittings

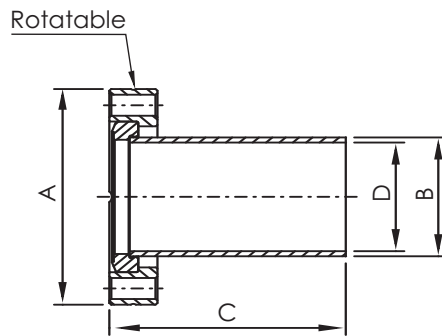


Figure 1

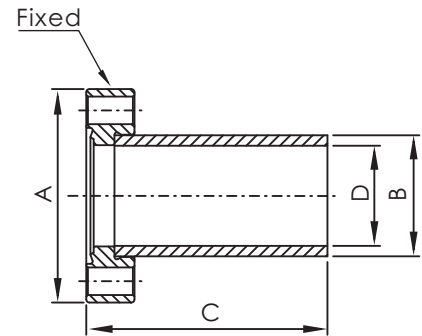


Figure 2

CF FLANGE HALF NIPPLES

*Material: SS 304L

*Tube Finish: Bead Blast

CF

Part Number	Size	Figure	A	B	C	D
CF-HN-133	CF1.33"(DN16)	2	1.33"	19.05	38.10	15.75
CF-HN-133R	CF1.33"(DN16)	1	1.33"	19.05	38.10	15.75
CF-HN-212	CF2.12"(DN25)	2	2.12"	25.40	52.07	22.10
CF-HN-275	CF2.75"(DN40)	2	2.75"	38.10	62.48	34.80
CF-HN-275R	CF2.75"(DN40)	1	2.75"	38.10	62.70	34.80
CF-HN-338	CF3.38"(DN50)	2	3.38"	50.80	81.79	47.50
CF-HN-450	CF4.50"(DN63)	2	4.50"	63.50	85.85	60.20
CF-HN-450R	CF4.50"(DN63)	1	4.50"	63.50	104.80	60.20
CF-HN-462	CF4.62"(DN80)	2	4.62"	76.20	89.66	72.90
CF-HN-600	CF6.00"(DN100)	2	6.00"	101.60	109.73	97.40
CF-HN-600R	CF6.00"(DN100)	1	6.00"	101.60	134.90	97.40
CF-HN-675	CF6.75"(DN130)	2	6.75"	127.00	109.70	122.80
CF-HN-800	CF8.00"(DN160)	2	8.00"	152.40	139.70	148.20
CF-HN-800R	CF8.00"(DN160)	1	8.00"	152.40	166.70	148.20
CF-HN-1000	CF10.00"(DN200)	2	10.00"	203.20	203.20	197.20
CF-HN-1000R	CF10.00"(DN200)	1	10.00"	203.20	203.20	199.00

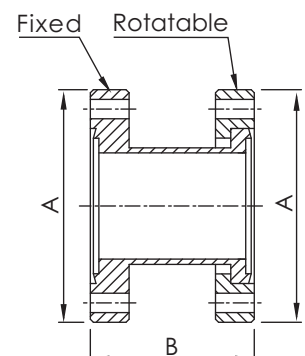
CF FLANGE FULL NIPPLES

*Material: SS 304L

*Tube Finish: Bead Blast



Part Number	Flange Size	A	B
CF-FN-133	CF1.33"(DN16)	1.33"	76.20
CF-FN-212	CF2.12"(DN25)	2.12"	104.14
CF-FN-275	CF2.75"(DN40)	2.75"	124.97
CF-FN-338	CF3.38"(DN50)	3.38"	163.58
CF-FN-450	CF4.50"(DN63)	4.50"	171.70
CF-FN-462	CF4.62"(DN80)	4.62"	179.32
CF-FN-600	CF6.00"(DN100)	6.00"	219.46
CF-FN-675	CF6.75"(DN130)	6.75"	214.90
CF-FN-800	CF8.00"(DN160)	8.00"	200.00
CF-FN-1000	CF10.00"(DN200)	10.00"	406.40



*Note: SS 316LN (SS 316L Tube+ SS 316LN Flange) Material Available on Request.

*Note: Polished and Electro- Polished Tube Finishes Available on Request.