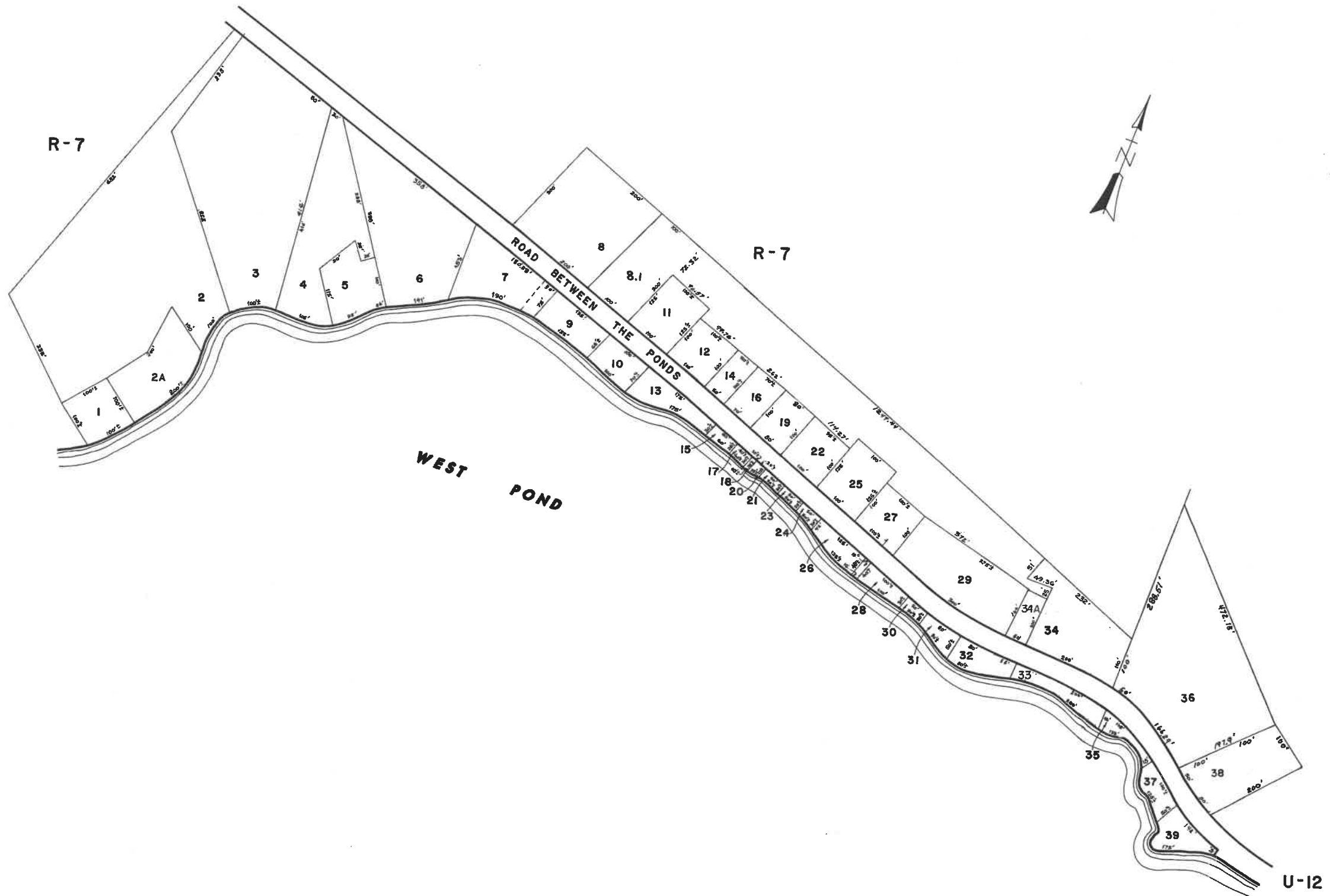


TAX MAPS REVISED  
4/1/2022



FOR ASSESSMENT PURPOSES ONLY  
NOT FOR PROPERTY CONVEYANCES

JOHN E. O'DONNELL & ASSOCIATES  
AUBURN, MAINE  
1970

PROPERTY MAP  
**PARSONSFIELD, MAINE**

0 100 200  
SCALE IN FEET

NO#  
**U-11**

Account	Card	Name	Location	Map/Lot
00763	001	GREENBLATT, GAIL J	34 LILY BAY LN	U11-001
01253	001	SHAW, GILBERT W	20 LILY BAY LN	U11-002
00626	001	HAYES, ALAN W	35 ROAD BETWEEN THE	U11-003
00037	001	ANSELL, JAMES F	11 ANSELL LN	U11-004
00149	001	BUCHANAN, NICOLE L	12 ANSELL LN	U11-005
01164	001	LINDO, EMANUAL	47 ROAD BETWEEN THE	U11-006
00864	001	SELKIRK, GAYLEE	55 ROAD BETWEEN THE	U11-007
00584	001	KIBIT, WILLIAM J	60 ROAD BETWEEN THE	U11-008
00582	001	HAGINS, IRENE	64 ROAD BETWEEN THE	U11-008-001
00585	001	HALL, JOHN W	61 ROAD BETWEEN THE	U11-009
00314	001	KOZLOSKI, ALFRED J	65 ROAD BETWEEN THE	U11-010
01484	001	WILCOX, ROBERT K	70 ROAD BETWEEN THE	U11-011
00832	001	LOCH, STEPHEN	ROAD BETWEEN THE PONDS	U11-012
00036	001	ANDERSON, TRUSTEES,	71 ROAD BETWEEN THE	U11-013
00833	001	LOCH, STEPHEN	76 ROAD BETWEEN THE	U11-014
00755	001	SCOTHORNE, NANCY	ROAD BETWEEN THE PONDS	U11-015
01556	001	PARSONSFIELD, TOWN OF	ROAD BETWEEN THE PONDS	U11-016
01557	001	PARSONSFIELD, TOWN OF	ROAD BETWEEN THE PONDS	U11-017
00834	001	LOCH, STEPHEN	ROAD BETWEEN THE PONDS	U11-018
00752	001	JESSEN, PAUL	80 ROAD BETWEEN THE	U11-019
00304	001	JESSEN, PAUL	ROAD BETWEEN THE PONDS	U11-021
00756	001	SCOTHORNE, NANCY	86 ROAD BETWEEN THE	U11-022
01162	001	RILEY, REBECCA T	87 ROAD BETWEEN THE	U11-023
01014	001	CLINEFF, KINDRA L	ROAD BETWEEN THE PONDS	U11-024
01015	001	CLINEFF, KINDRA L	88 ROAD BETWEEN THE	U11-025
00243	001	GOODMAN, ISAAC	91 ROAD BETWEEN THE	U11-026
00889	001	BRENDT, SANDRA-TIFFANY	94 ROAD BETWEEN THE	U11-027
01124	001	PURINTON, STEVEN J	ROAD BETWEEN THE PONDS	U11-028
01125	001	PURINTON, STEVEN J	100 ROAD BETWEEN THE	U11-029
00564	001	PARSONSFIELD, TOWN OF	ROAD BETWEEN THE PONDS	U11-030
00605	001	HARRAN, JOSEPH	103 ROAD BETWEEN THE	U11-031
00504	001	GISH, TIMOTHY C	105 ROAD BETWEEN THE	U11-032
00871	001	MACWHINNIE, SUZANNE	117 ROAD BETWEEN THE	U11-033
00872	001	DJERF, ERIN M	112 ROAD BETWEEN THE	U11-034
00505	001	GISH, TIMOTHY C & ANN	ROAD BETWEEN THE PONDS	U11-034-A
00725	001	KALINOSKI, JOSEPH T	119 ROAD BETWEEN THE	U11-035
00726	001	KALINOSKI, JOSEPH T	120 ROAD BETWEEN THE	U11-036
00649	001	HILT, MADELINE	127 ROAD BETWEEN THE	U11-037
00650	001	BERGERON, KEVIN	126 ROAD BETWEEN THE	U11-038
00761	001	KINGMAN, DONALD P	129 ROAD BETWEEN THE	U11-039