



APPLYING HEALY FOOTBALL DECALS

- Before any decals can be applied, the surface area of the football helmet must be clean from dirt or dust. You can towel off the surface with water only and let dry, or apply *ProPrep* helmet polish, following the instructions on the bottle.



1) Decal Placement - Decal should be positioned on helmet so the bottom of the decal design rests 1-2" from top of helmet earhole.



2) Press center of decal to helmet so only a small middle section is applied to helmet.



3) Working from middle, out, press decal to helmet. Apply larger areas to helmet first then press smaller sections down. This will prevent buckling.



ProPrep™



4) When decal is applied to helmet, rub over entire decal with thumb to make sure it is completely pressed into place.

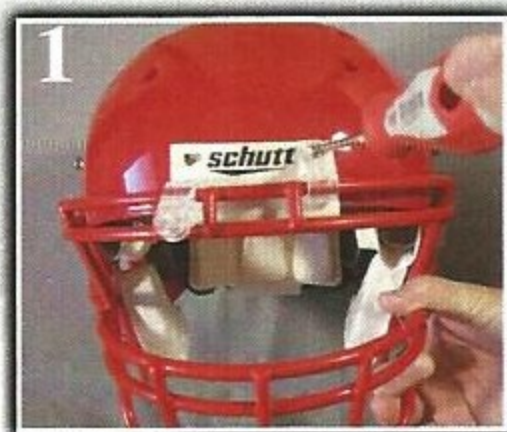


5) If buckling occurs, gently lift up buckled area, pull to straighten and reapply.



ProPrep™

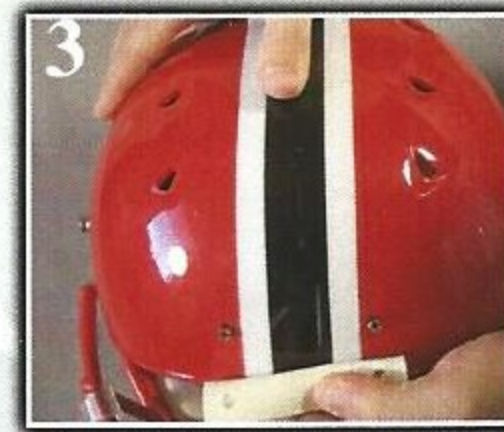
APPLYING HEALY HELMET TAPE



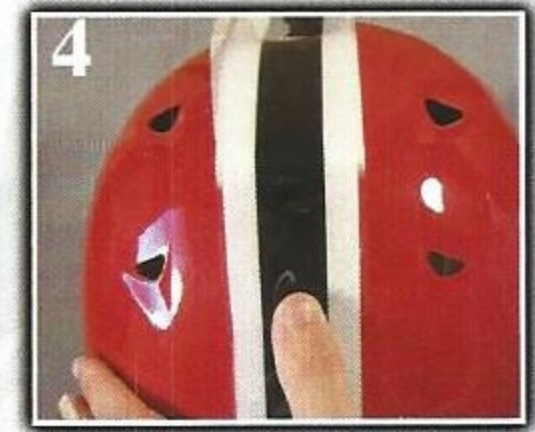
1) Remove front face mask screws so Healy multi-tape can be placed underneath the sweat-band flap.



2) Remove only 1/2 of multi-tape backing and start application on front edge of helmet underneath sweat-band flap.



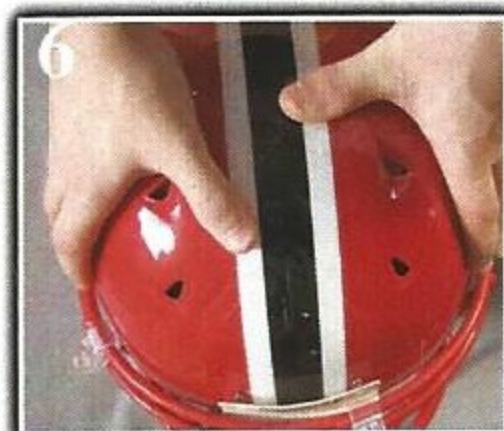
3) Align multi-tape to middle seam of helmet and press tape down to front edge, then press center of tape down first, then apply the edges.



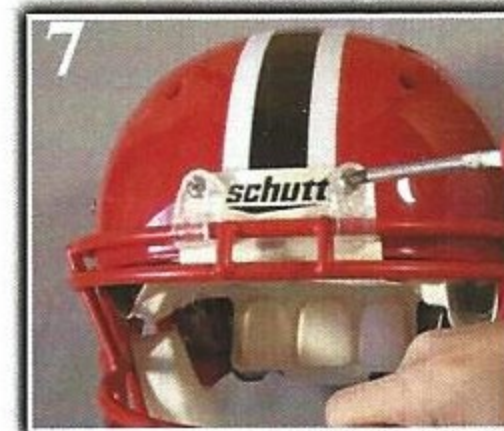
4) When applying multi-tape, work in small sections, pressing tape down, middle to out, gradually working to the back of the helmet.



5) When multi-tape is completely applied, there may be excess vinyl. Trim excess vinyl from back of helmet so the tape edge is flush with back edge of helmet.



6) If Healy multi-tape is off-center, gently lift and reapply, following the middle seam of helmet. Finally, press entire stripe, with thumb, once again, to insure it is firmly into place.



7) Reposition sweat-band flap and tighten face mask screws.

