

February 5, 2019

**ADDENDUM NO. 1**  
**Heber Springs Water and Sewer**  
**HIGH SERVICE PUMP STATION**  
**CWB Project No. 15-054**

This addendum shall be considered part of the Plans, Specifications, and Contract Documents and is issued to change, amplify, delete from, or otherwise explain these documents where provisions of this addendum differ from those of the original documents. This addendum shall have precedence over the original documents and shall govern.

**NON-MANDATORY PRE-BID CONFERENCE**

A non-mandatory pre-bid conference has been scheduled for 10 a.m., Tuesday, February 19, 2019 at the Heber Springs Water office, 1108 W. Front St. Heber Springs, AR 72543. The meeting will allow prospective bidders to address any questions and get clarification on items before the bid.

**TECHNICAL SPECIFICATIONS**

**1. Section 331200 – VALVES**

Add the following Parts (2.11 and 2.12) to Technical Specification Section 331200:  
Valves

**2.11 GATE VALVES AND VALVE BOXES**

- A. Gate valves shall be resilient seat, iron-bodied, non-rising stem, o-ring stem seals, double gate valves, designed for working pressures of not less than 250 psi and conforming to AWWA C509 or C515.**
- B. All valve nuts shall be a maximum of 36" deep. An extension body shall be used when depth of waterline is more than 36" deep and shall be composed of Series 300 stainless steel.**
- C. All bolts shall be stainless steel.**
- D. Valves shall have 2"x2" square operating nuts that open in the counter-clockwise direction (left).**
- E. Valve boxes shall be cast iron or steel with adjustable depth to match the amount of cover and shall be 6 1/4" in diameter with concrete collar.**
- F. All drop lids shall be marked "WATER".**
- G. Tapping valves shall have full size flow way accepting standard size shell cutter.**
- H. All interior and exterior metal surfaces shall be coated with a two-part thermosetting epoxy complying with AWWA C550.**

**2.12 TAPPING SLEEVES**

- A. *Tapping sleeves shall be Mueller H-306, or equal with working pressure rating of 250 psi for 12" and smaller.***
- B. *All bolts shall be stainless steel.***

**PLANS**

**1. Sheet 10**

**Replace Sheet 10 in its entirety with the attached ADD#1-Sheet 10R.**

**2. Sheet 10A**

**To clarify the piping layout on Sheet 10, section cuts were added for the surge anticipation and pressure relief valve areas. Please refer to the attached Sheet 10A.**

NOTE TO CONTRACTOR

1. CONTRACTOR MAY SUBSTITUTE FACTORY WELDED-ON OUTLETS AND FACTORY ASSEMBLED PIPE HEADER(S) IN LIEU OF FLANGED TEES FOR THE PIPE HEADER ASSEMBLIES. FACTORY ASSEMBLED PIPE HEADERS MAY BE DUCTILE IRON OR SPIRAL WELD STEEL. THIS APPLIES ONLY TO PIPE WITHIN THE PUMP STATION BUILDING.
2. SPIRAL WELD STEEL MUST MEET THE REQUIREMENTS OF AWWA C200, WITH CEMENT MORTAR LINING MEETING AWWA C205, AND TAPE WRAP MEETING THE REQUIREMENTS OF AWWA C214.
3. CONTRACTOR IS RESPONSIBLE FOR ALL COORDINATION OF THE CONNECTIONS BETWEEN THE PIPE HEADERS, VALVES, FITTINGS, AND APPURTENANCES. ALL JOINTS SHALL BE PRESSURE RATED TO 350 PSI.
4. ALL BURIED FITTINGS SHALL BE M.J. WITH RETAINER GLAND FOR UP TO 350 PSI. WORKING PRESSURE.

THRUST BLOCKING, MIN. OF 10 S.F. OF BEARING AREA.

24" D.I. M.J. PLUG ON 24" D.I. M.J. TEE

24" M.J. TEE (REFER TO SITE PLAN)

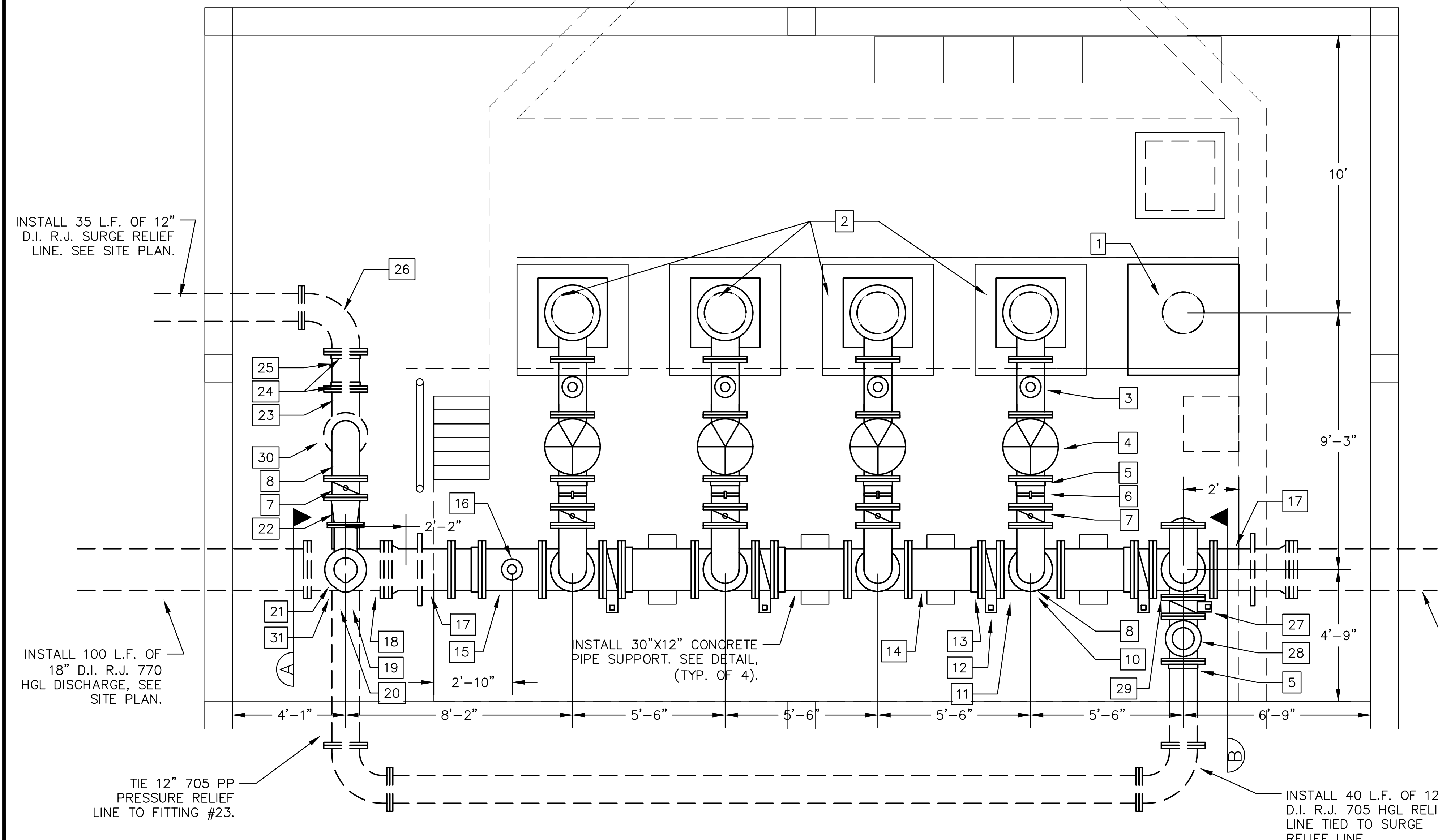
6" VALVE BOX AND RISER SECTIONS TO GRADE. VALVE STEM RISERS SHALL BE USED TO PLACE OPERATING NUT APPROXIMATELY 2" BELOW GRADE.

24" M.J. BUTTERFLY VALVE

24" D.I. THRUST COLLAR (P.E. X P.E.) LAYING LENGTH OF 24"

PIPING LEGEND

ITEM	DESCRIPTION	#
1	FUTURE PUMP ( CONSTRUCT PAD)	1
2	PROPOSED HIGH SERVICE PUMP	4
3	12"X12"X4" F.L. TEE WITH 4" AIR/VAC VALVE WITH INTEGRAL INLET RESTRICTOR DISC FOR NON-SLAM OF AIR VALVE	4
4	12" SURGE-BUSTER CHECK VALVE	4
5	12" MEGAFLANGE 2100 ADAPTER	5
6	12" F.L.XP.E. PIPE SPOOL (12" LENGTH SHOWN) WITH PRESSURE GAUGE TAP	4
7	12" F.L. BUTTERFLY VALVE WITH HANDWHEEL	5
8	12" D.I. F.L. LONG RADIUS 90° BEND	6
9	12" D.I. BLIND FLANGE	1
10	12" D.I. FL.XFL. PIPE SPOOL (LENGTH AS REQ.)	5
11	18"X18"X12" D.I. FL. TEE	5
12	18" FL. BUTTERFLY VALVE WITH 2" NUT	4
13	18" MEGAFLANGE 2100 ADAPTER	6
14	18" FL. X P.E. PIPE SPOOL (LENGTH AS REQ.)	5
15	18"X18"X4" D.I. FL. TEE WITH 4" D.I. PIPE SPOOL (FL. X FL., LENGTH AS REQUIRED)	1
16	4" SURGE SUPPRESSION COMBINATION AIR VALVE (INSTALLED MIN. 36" ABOVE F.F.)	1
17	18" M.J. X FL. THRUST COLLAR (30" O.A.L.)	2
18	18"X18"X10" D.I. M.J. TEE	1
19	10" D.I. FL.XPE. PIPE SPOOL (LENGTH AS REQ.)	1
20	10" FL. BUTTERFLY VALVE WITH HANDWHEEL	1
21	10" SURGE ANTICIPATING ANGLE VALVE	1
22	12"X10" D.I. FL.XFL. ECCENTRIC REDUCER	1
23	12" D.I. M.J. TEE	1
24	12" D.I. WEDGE ACTION M.J. RETAINER GLAND	7
25	12" D.I. P.E.XP.E. PIPE SPOOL (LENGTH AS REQUIRED)	1
26	12" D.I. M.J. 90° BEND	1
27	12" FL. BUTTERFLY VALVE WITH 2" NUT	1
28	12" PRESSURE RELIEF VALVE SET TO 125 PSI (ADJ. FROM 100 TO 150 PSI)	1
29	12" D.I. F.L. TEE (RUN VERTICAL)	1
30	12" D.I. FL.XPE. PIPE SPOOL (LENGTH AS REQ.)	1
31	10" D.I. WEDGE ACTION M.J. RETAINER GLAND	1



REVISED FOR ADDENDUM #1  
2-5-19

PROJECT:  
HIGH SERVICE PUMP STATION

DATE:  
FEBRUARY 2019

OWNER:  
HEBER SPRINGS WATER AND SEWER

SCALE:  
1/4" = 1'-0"

ADJUST ACCORDINGLY

**CWB Engineers, Inc.**  
-Designing a Better Arkansas-

1915 Highway 25B  
Heber Springs, AR 72543

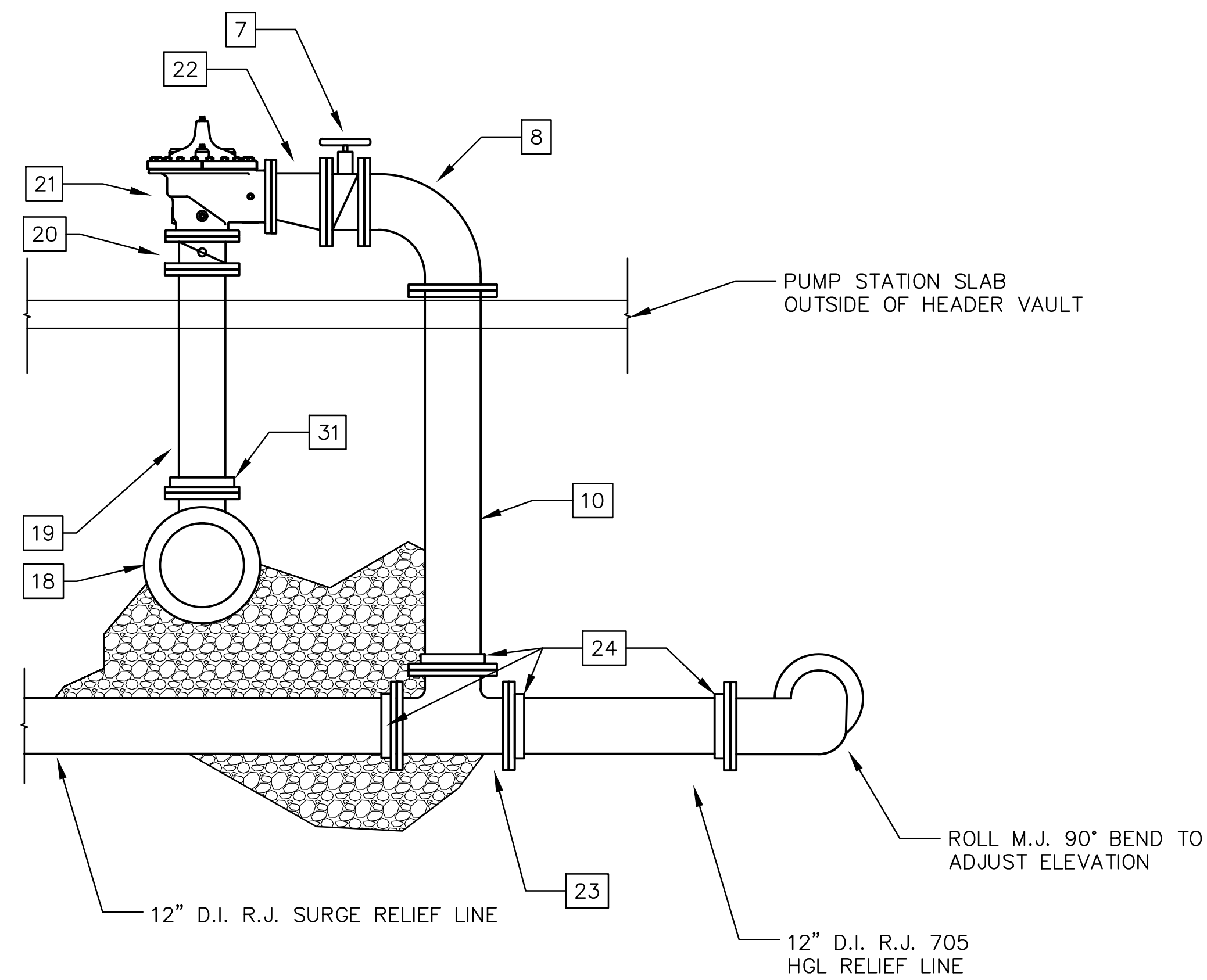
phone: (501) 362-3744  
cell: (501) 766-9832  
email: kbreckenridge@cwbenigneers.com

STATE OF ARKANSAS  
REGISTERED PROFESSIONAL ENGINEER  
KYLE BRECKENRIDGE  
1-24-19

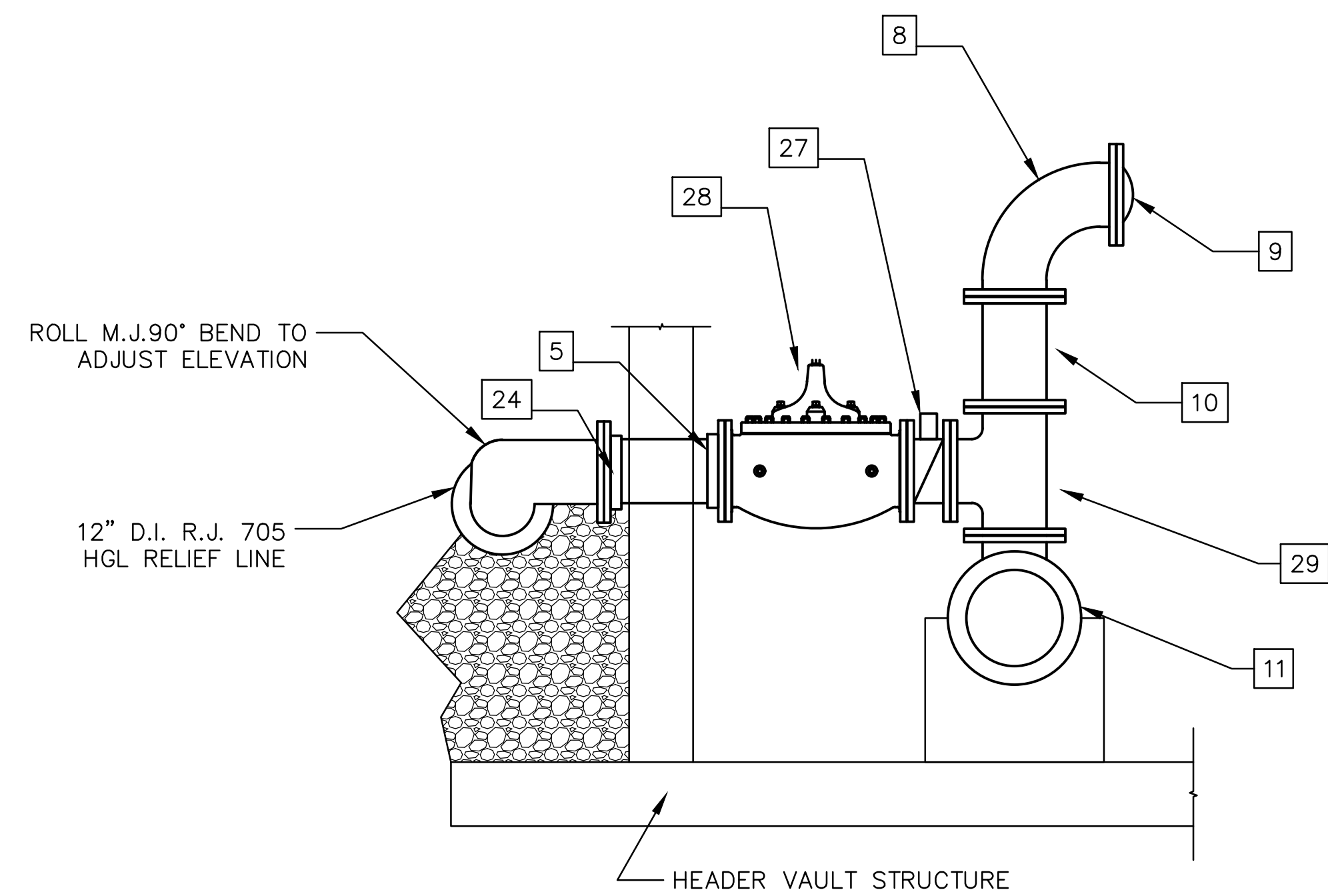
HSPS PIPING PLAN  
REVISED ADDENDUM #1

SHEET NO.  
10R

REFER TO SHEET 10R  
ADDENDUM#1 FOR PLAN VIEW



(A) SECTION @ SURGE ANTICIPATING VALVE



(B) SECTION @ 12" P.R.V.

PROJECT:  
HIGH SERVICE PUMP STATION

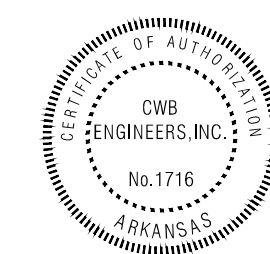
OWNER:  
HEBER SPRINGS WATER AND SEWER

**CWB**  
*Engineers, Inc.*

*-Designing a Better Arkansas-*

1915 Highway 25B  
Heber Springs, AR 72543

phone: (501) 362-3744  
cell: (501) 766-9832  
email: kbreckenridge@cwbenigneers.com



1-24-19

HSPS PIPING PLAN  
RFI DETAILS

SHEET NO.

10A

DATE:  
FEBRUARY 2019

SCALE:  
 $\frac{1}{2}'' = 1' - 0''$

