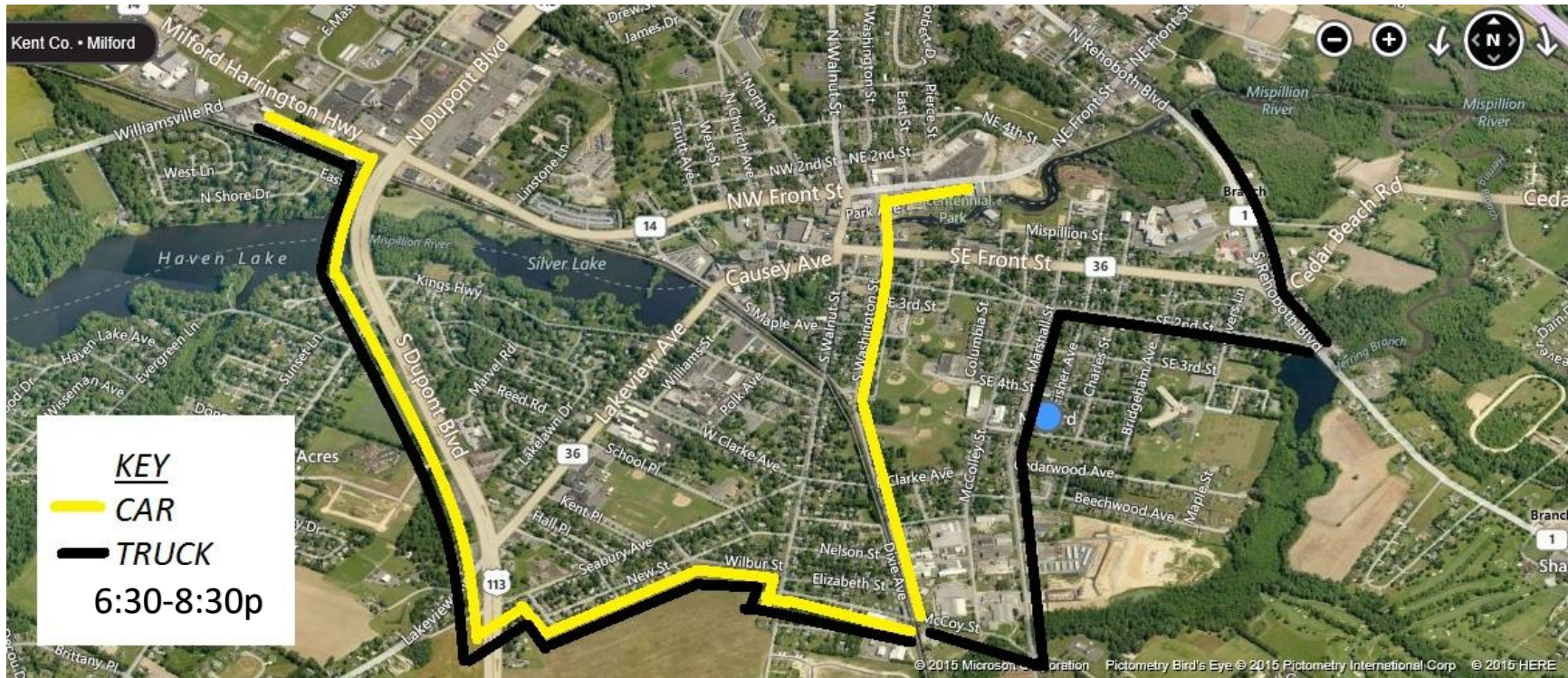


# Milford Parade Oct. 19, 2022 DETOUR Map



**KEY**  
**— CAR**  
**— TRUCK**  
**6:30-8:30p**

## East Bound

Follow detour signage-  
 Southbound Rt 113 to Seabury Avenue –left turn  
 Seabury to Cherry St, --right turn  
 Cherry to New St, --left turn  
 New St to Wilbur St –right turn  
 Wilbur St to S Walnut St –right turn  
 S Walnut St to McCoy St –left turn  
 McCoy St to S Washington St –left turn follow to all points  
 North and East  
TRUCKS continue on McCoy St to Marshall St –left turn  
 Marshall St to South East Second St –right turn  
 S.E. 2<sup>nd</sup> St to Alt 1-Rehoboth Blvd to all points North, East and  
 South

## West Bound

Follow Detour signage-  
CAR- S. Washington St to McCoy St –right turn  
TRUCK- Alt 1 Rehoboth Blvd to SE 2<sup>nd</sup> St –right turn  
TRUCK- SE 2<sup>nd</sup> St to Marshall St –left turn  
TRUCK- S. Marshall St to McCoy St –right turn  
ALL- McCoy St to S Walnut St –right turn  
 S Walnut St to Wilbur St –immediate left turn  
 Wilbur St to New St –left turn  
 New St to Cherry St –right turn  
 Cherry St to Seabury Avenue –left turn  
 Seabury Avenue to N. Rt 113 –right turn  
 N. Rt 113 to Westbound Rt 14 –left turn  
 To all points West and North and South