

KITSAP COUNTY COMMUNITY HEALTH STATUS ASSESSMENT

The Community Health Status Assessment (CHSA) is a compilation of indicators of demographics, socioeconomics, environment, behaviors, and health status, which together inform the answer to these questions:

"How healthy are our residents?"

"What does the health status of our community look like?"

November 12, 2019

KITSAP COUNTY HEALTH STATUS ASSESSMENT, 2019

TABLE OF CONTENTS

Section #	Section Name	Indicator Name	Page #
		SUMMARY	14 to 35
		DATA NOTES AND SOURCES	36 to 40
		COMMUNITY HEALTH CONTEXT	41
A.	DEMOGRAPHICS		42 to 54
A.1	POPULATION		42 to 44
A.1.1		TOTAL POPULATION AND GROWTH RATE	
A.1.2		COMPONENTS OF POPULATION GROWTH BIRTHS DEATHS NATURAL CHANGE RATE ESTIMATED MIGRATION RATE	
A.1.3		POPULATION PROJECTIONS	
A.1.4		POPULATION MOVING WITHIN OR INTO KITSAP COUNTY IN PAST YEAR	
A.2	POPULATION BY SUBGROUP		45 to 52
A.2.1		MEDIAN AGE	
A.2.2		POPULATION BY AGE AND GENDER	
A.2.3		POPULATION BY AGE GROUP OVER TIME	
A.2.4		RACE AND ETHNICITY WHITE, NON-HISPANIC BLACK, NON-HISPANIC AMERICAN INDIAN/ALASKAN NATIVEN, NON-HISPANIC ASIAN, NON-HISPANIC NATIVE HAWAIIAN/PACIFIC ISLANDER, NON-HISPANIC 2 OR MORE RACES, NON-HISPANIC HISPANIC	

KITSAP COUNTY HEALTH STATUS ASSESSMENT, 2019

TABLE OF CONTENTS

Section #	Section Name	Indicator Name	Page #
A.2.5		RACE & ETHNICITY OF STUDENTS ENROLLED IN PUBLIC SCHOOL WHITE, NON-HISPANIC BLACK, NON-HISPANIC AMERICAN INDIAN/ALASKAN NATIVEN, NON-HISPANIC ASIAN, NON-HISPANIC NATIVE HAWAIIAN/PACIFIC ISLANDER, NON-HISPANIC 2 OR MORE RACES, NON-HISPANIC HISPANIC	
A.2.6		POPULATION LIVING WITHIN RESERVATION CENSUS TRACTS PORT GAMBLE S'KLALLAM PORT MADISON	
A.2.7		NON-ENGLISH SPEAKING POPULATION	
A.2.8		RESIDENT ARMED FORCES PERSONNEL	
A.2.9		YOUTH WITH A PARENT IN THE MILITARY	
A.2.10		VETERAN POPULATION	
A.3	POPULATION BY SUBCOUNTY REGION		53 to 54
A.3.1		TOTAL POPULATION BY INCORPORATED AND UNINCORPORATED REGION	
A.3.2		TOTAL POPULATION BY ZIP CODE REGION	
A.3.3		TOTAL POPULATION BY SCHOOL DISTRICT REGION	
B.	SOCIOECONOMICS		55 to 78
B.1	HOUSEHOLD COMPOSITION		55 to 57
B.1.1		HOUSEHOLD TYPE AS A PERCENTAGE OF ALL HOUSEHOLDS	
B.1.2		HOUSEHOLD TYPE FOR PERSONS AGE 65 AND OLDER	
B.1.3		CHILDREN RECEIVING DSHS FOSTER CARE SERVICES	
B.2	EDUCATION		58 to 62
B.2.1		POPULATION AGE 25+ WITH MORE THAN A HIGH SCHOOL EDUCATION	

KITSAP COUNTY HEALTH STATUS ASSESSMENT, 2019

TABLE OF CONTENTS

Section #	Section Name	Indicator Name	Page #
B.2.2		CHILDREN AGE 3-4 ENROLLED IN SCHOOL	
B.2.3		HIGH SCHOOL 5-YEAR GRADUATION RATES	
B.2.4		HIGH SCHOOL DROP OUT RATES	
B.2.5		YOUTH AT RISK OF LOW COMMITMENT TO SCHOOL	
B.2.6		YOUTH AT RISK OF ACADEMIC FAILURE	
B.3	EMPLOYMENT		63 to 64
B.3.1		UNEMPLOYMENT RATE	
B.3.2		EMPLOYED AND WORK IN COUNTY OF RESIDENCE	
B.4	ECONOMIC WELL-BEING		65 to 71
B.4.1		MEDIAN HOUSEHOLD INCOME	
B.4.2		MEDIAN ANNUAL PER CAPITA PERSONAL INCOME	
B.4.3		POPULATION LIVING BELOW 100% OF THE POVERTY LEVEL	
B.4.4		POPULATION LIVING BELOW 200% FEDERAL POVERTY LEVEL	
B.4.5		SUPPLEMENTAL NUTRITION ASSISTANCE PROGRAM (SNAP) PARTICIPATION	
B.4.6		FREE & REDUCED MEAL PROGRAM ELIGIBILITY	
B.4.7		ADULTS EXPERIENCED FOOD INSECURITY IN PAST YEAR	
B.4.8		YOUTH FOOD INSECURITY	
B.4.9		FOOD INSECURITY - OVERALL - CHILD	
B.5	HOUSING		72 to 78
B.5.1		BUILDING PERMITS	
B.5.2		HOUSING OCCUPANCY AND TENURE FOR OWNERS AND RENTERS OWNER OCCUPIED RENTER OCCUPIED VACANT	

KITSAP COUNTY HEALTH STATUS ASSESSMENT, 2019

TABLE OF CONTENTS

Section #	Section Name	Indicator Name	Page #
B.5.3		MEDIAN HOUSE PRICES	
B.5.4		HOUSEHOLDS SPENDING MORE THAN 30% OF INCOME ON HOUSING OWNER RENTER	
B.5.5		APARTMENT VACANCY RATES AND AVERAGE RENT VACANCY RATE AVERAGE RENT	
B.5.6		MEDIAN MONTHLY RENT	
B.5.7		MONTHLY HOUSING WAGE	
B.5.8		NUMBER ON WAITLIST TO RECEIVE SECTION 8 HOUSING VOUCHERS	
B.5.9		PUBLIC SCHOOL STUDENTS EXPERIENCING HOMELESSNESS	
B.5.10		TOTAL INDIVIDUALS USING HOUSING SOLUTIONS CENTER	
B.5.11		HOMELESSNESS (POINT-IN-TIME)	
C.	ENVIRONMENTAL HEALTH		79 to 87
C.1	NATURAL ENVIRONMENT		79 to 81
C.1.1		DAYS WITH HEALTHY AIR	
C.1.2		FRESH WATER BEACHES - AVERAGE NUMBER OF DAYS WITH AN ADVISORY	
C.1.3		MARINE BEACHES - AVERAGE NUMBER OF DAYS WITH AN ADVISORY	
C.1.4		FRESH WATER STREAMS MEETING STANDARDS	
C.1.5		SHORELINE MILES OPEN FOR SHELLFISHING	
C.2	BUILT ENVIRONMENT		82 to 84
C.2.1		DENSITY OF SUPERMARKET & GROCERY STORES	
C.2.2		DENSITY OF FAST FOOD & CONVENIENCE STORES	
C.2.3		DENSITY OF SNAP AUTHORIZED FOOD STORES	

KITSAP COUNTY HEALTH STATUS ASSESSMENT, 2019

TABLE OF CONTENTS

Section #	Section Name	Indicator Name	Page #
C.2.4		DENSITY OF WIC AUTHORIZED FOOD STORES	
C.2.5		AVERAGE SCORE OF FOOD SERVICE ESTABLISHMENT INSPECTIONS	
C.2.6		FOOD SERVICE ESTABLISHMENT INSPECTIONS WITH A CRITICAL VIOLATION	
C.3	TRANSPORTATION		85 to 87
C.3.1		YOUTH WALK OR BIKE TO SCHOOL	
C.3.2		EMPLOYED RESIDENTS COMMUTING TO WORK BY MEANS OTHER THAN DRIVING ALONE	
C.3.3		MOTOR VEHICLE INJURY RELATED DEATH RATE	
C.3.4		MOTOR VEHICLE INJURY RELATED HOSPITALIZATIONS	
D.	HEALTH CARE RESOURCES		88 to 99
D.1	HEALTH CARE AVAILABILITY		88 to 89
D.1.1		PRIMARY CARE PHYSICIAN RATE	
D.1.2		DENTIST RATE	
D.1.3		MENTAL HEALTH PROVIDER RATE	
D.1.4		HEALTH CARE PROFESSIONAL SHORTAGE AREAS (HPSA)	
D.2	HEALTH CARE ACCESS		90 to 96
D.2.1		ADULTS WITHOUT HEALTH INSURANCE	
D.2.2		ADULTS WITH UNMET HEALTHCARE NEEDS	
D.2.3		ADULTS ADEQUATELY INSURED	
D.2.4		HOSPITAL CHARITY CARE	
D.2.5		ADULTS REPORT HAVING A PERSONAL DOCTOR OR HEALTH CARE PROVIDER	
D.2.6		CHILDREN ENROLLED IN APPLE HEALTH	
D.2.7		INSURED ADULTS BY HEALTH INSURANCE TYPE	
D.2.8		ADULTS ACCESS TO PREVENTIVE/AMBULATORY CARE (MEDICAID)	

KITSAP COUNTY HEALTH STATUS ASSESSMENT, 2019

TABLE OF CONTENTS

Section #	Section Name	Indicator Name	Page #
D.2.9		CHILD AND ADOLESCENT ACCESS TO PRIMARY CARE (MEDICAID)	
D.2.10		WELL CHILD VISITS (AGE 3-6) (MEDICAID)	
D.2.11		MEDICAID POPULATION ELIGIBLE FOR DENTAL SERVICES	
D.2.12		ELIGIBLE MEDICAID POPULATION USING DENTAL SERVICES	
D.3	MEETING ROUTINE HEALTH RECOMMENDATIONS		97 to 99
D.3.1		ADULTS WITH A ROUTINE MEDICAL CHECK-UP IN PAST YEAR	
D.3.2		YOUTH WITH A ROUTINE MEDICAL CHECK-UP IN PAST YEAR	
D.3.3		ADULTS WITH A ROUTINE DENTAL VISIT IN THE PAST YEAR	
D.3.4		YOUTH WITH A ROUTINE DENTAL VISIT IN PAST YEAR	
D.3.5		FEMALE AGE 50+ BREAST CANCER SCREENING	
D.3.6		FEMALE AGE 18+ CERVICAL CANCER SCREENING	
D.3.7		ADULTS AGE 50 TO 75 COLORECTAL CANCER SCREENING	
E.	PREGNANCY AND BIRTHS		100 to 110
E.1	PREGNANCY		100 to 105
E.1.1		PREGNANCY RATE	
E.1.2		ABORTION RATE PER 1,000 WOMEN AGE 15-44	
E.1.3		PRENATAL CARE INITIATION IN THE FIRST TRIMESTER	
E.1.4		PRENATAL CARE INITIATION IN THE SECOND TRIMESTER	
E.1.5		PRENATAL CARE INITIATION IN THE THIRD TRIMESTER OR NO PRENATAL CARE	
E.1.6		EARLY AND ADEQUATE PRENATAL CARE	
E.1.7		GESTATIONAL DIABETES	
E.1.8		GESTATIONAL HYPERTENSION	
E.1.9		SMOKING DURING PREGNANCY	

KITSAP COUNTY HEALTH STATUS ASSESSMENT, 2019

TABLE OF CONTENTS

Section #	Section Name	Indicator Name	Page #
E.2	BIRTHS		106 to 108
E.2.1		LIVE BIRTH RATE	
E.2.2		CIVILIAN MEDICAID-PAID BIRTHS	
E.2.3		LOW BIRTH WEIGHT	
E.2.4		PREMATURE BIRTHS	
E.3	POSTPARTUM		109 to 110
E.3.1		BREASTFEEDING AT BIRTH	
E.3.2		INFANT MORTALITY	
E.3.3		PERCENT OF INFANTS BORN SERVED BY WIC	
F.	QUALITY OF LIFE		111 to 135
F.1	WELL-BEING		111 to 124
F.1.1		ADULTS REPORT EXCELLENT, VERY GOOD, OR GOOD GENERAL HEALTH	
F.1.2		ADDITIONAL YEARS OF HEALTHY LIFE EXPECTED AT AGE 20	
F.1.3		ADULTS DO NOT GET NEEDED SOCIAL/EMOTIONAL SUPPORT	
F.1.4		ADULTS WITH 3 OR MORE ADVERSE CHILDHOOD EXPERIENCES	
F.1.5		ADULTS REPORT ACTIVITIES LIMITED BY POOR PHYSICAL/MENTAL HEALTH	
F.1.6		ADULTS REPORT PHYSICAL IMPAIRMENT IN THE PAST MONTH	
F.1.7		ADULTS REPORT MENTAL DISTRESS IN PAST MONTH	
F.1.8		ADULTS REPORT DEPRESSION	
F.1.9		YOUTH REPORT DEPRESSIVE FEELINGS	
F.1.10		YOUTH LIVE IN A HOME WITH RISK FACTOR OF POOR FAMILY MANAGEMENT	
F.1.11		YOUTH DO NOT HAVE AN ADULT TO TURN TO WHEN SAD OR HOPELESS	
F.1.12		YOUTH SERIOUSLY CONSIDERED SUICIDE IN PAST YEAR	

KITSAP COUNTY HEALTH STATUS ASSESSMENT, 2019

TABLE OF CONTENTS

Section #	Section Name	Indicator Name	Page #
F.1.13		YOUTH HIGHLY HOPEFUL	
F.1.14		SUICIDE NON-FATAL HOSPITALIZATION RATE	
F.1.15		SUICIDE DEATH RATE	
F.1.16		POPULATION WITH A DISABILITY	
F.1.17		SCHOOL SPECIAL EDUCATION ENROLLMENT	
F.2	SAFETY AND VIOLENCE		125 to 135
F.2.1		YOUTH FEEL UNSAFE AT SCHOOL	
F.2.2		YOUTH BULLYING	
F.2.3		YOUTH MADE TO FEEL UNSAFE BY BOYFRIEND OR GIRLFRIEND IN PAST YEAR	
F.2.4		PERSONAL CRIME RATE	
F.2.5		PROPERTY CRIME RATE	
F.2.6		RATE OF CRIMES TO SOCIETY	
F.2.7		TOTAL CRIME RATE - GROUP A TOTAL CRIME RATE - GROUP B	
F.2.8		ADULT ARREST RATE	
F.2.9		ADOLESCENT (AGE 10-17) ARREST RATE	
F.2.10		CHILD ABUSE AND NEGLECT ACCEPTED REFERRAL RATE	
F.2.11		YOUTH HAVE EVER BEEN PHYSICALLY ABUSED BY AN ADULT	
F.2.12		DOMESTIC VIOLENCE OFFENSE RATE	
G.	HEALTH-RELATED BEHAVIORS		136 to 160
G.1	SUBSTANCE USE		136 to 152
G.1.1		ADULT CURRENT SMOKING	
G.1.2		SALES OF TOBACCO TO MINORS - FAILED COMPLIANCE CHECKS	

KITSAP COUNTY HEALTH STATUS ASSESSMENT, 2019

TABLE OF CONTENTS

Section #	Section Name	Indicator Name	Page #
G.1.3		YOUTH CURRENT SMOKING	
G.1.4		YOUTH CURRENT VAPING	
G.1.5		YOUTH CURRENT MARIJUANA USE	
G.1.6		YOUTH CURRENT PRESCRIPTION DRUG (PAINKILLERS) USE TO GET HIGH	
G.1.7		ADULT BINGE ALCOHOL DRINKERS	
G.1.8		SIXTH GRADERS EVER USED ALCOHOL	
G.1.9		YOUTH CURRENT ALCOHOL USE	
G.1.10		YOUTH BINGE ALCOHOL USE	
G.1.11		YOUTH DRUNK OR HIGH AT SCHOOL IN PAST YEAR	
G.1.12		ALCOHOL RELATED DEATH RATE	
G.1.13		ALCOHOL RELATED HOSPITALIZATION RATE	
G.1.14		DRUG RELATED DEATH RATE	
G.1.15		DRUG RELATED HOSPITALIZATION RATE	
G.1.16		OPIOID RELATED DEATH RATE	
G.1.17		OPIOID RELATED HOSPITALIZATION RATE	
G.1.18		OPIOID PRESCRIPTION RATE	
G.1.19		YOUTH RIDING WITH SOMEONE WHO HAD BEEN DRINKING IN PAST MONTH	
G.1.20		YOUTH REPORT RIDING IN A CAR WITH SOMEONE WHO WAS USING MARIJUANA	
G.1.21		YOUTH REPORT DRIVING AFTER USING MARIJUANA IN PAST MONTH	
G.2	WEIGHT, NUTRITION AND PHYSICAL ACTIVITY		153 to 160
G.2.1		ADULTS OVERWEIGHT OR OBESE	
G.2.2		YOUTH OVERWEIGHT OR OBESE	

KITSAP COUNTY HEALTH STATUS ASSESSMENT, 2019

TABLE OF CONTENTS

Section #	Section Name	Indicator Name	Page #
G.2.3		ADULT DAILY FRUIT AND VEGETABLE CONSUMPTION	
G.2.4		YOUTH DAILY FRUIT AND VEGETABLE CONSUMPTION	
G.2.5		ADULTS NOT MEETING RECOMMENDATIONS FOR PHYSICAL ACTIVITY	
G.2.6		ADULTS NOT GETTING ANY PHYSICAL ACTIVITY IN PAST MONTH	
G.2.7		YOUTH PHYSICALLY ACTIVE AT RECOMMENDED LEVEL	
G.2.8		YOUTH HAVE 2 HOURS OR LESS OF DAILY SCREEN TIME	
H. DEATH, ILLNESS, AND INJURY			161 to 189
H.1	DEATHS AND HOSPITALIZATIONS		161 to 169
H.1.1		LIFE EXPECTANCY AT BIRTH	
H.1.2		ALL-CAUSE DEATH RATE	
H.1.3		LEADING CAUSES OF DEATH	
H.1.4		YEARS OF POTENTIAL LIFE LOST (YPLL) DUE TO PREMATURE DEATH	
H.1.5		YEARS OF POTENTIAL LIFE LOST (YPLL) BY CAUSE	
H.1.6		ALL-CAUSE HOSPITALIZATION RATE	
H.1.7		LEADING CAUSES OF HOSPITALIZATIONS	
H.1.8		ALL-CAUSE EMERGENCY DEPARTMENT VISITS	
H.2	CHRONIC DISEASE		170 to 179
H.2.1		ADULTS HAVE LOST A TOOTH TO GUM DISEASE OR DECAY	
H.2.2		ADULTS EVER TOLD THEY HAVE HIGH CHOLESTEROL	
H.2.3		ADULTS EVER TOLD THEY HAVE HIGH BLOOD PRESSURE	
H.2.4		ADULTS EVER TOLD THEY HAVE CARDIOVASCULAR DISEASE	
H.2.5		ADULTS EVER TOLD THEY HAVE DIABETES	
H.2.6		YOUTH EVER TOLD THEY HAVE DIABETES	

KITSAP COUNTY HEALTH STATUS ASSESSMENT, 2019

TABLE OF CONTENTS

Section #	Section Name	Indicator Name	Page #
H.2.7		YOUTH EVER TOLD THEY HAVE ASTHMA	
H.2.8		CANCER INCIDENCE	
H.2.9		FEMALE BREAST CANCER INCIDENCE	
H.2.10		FEMALE GENITAL CANCER INCIDENCE	
H.2.11		CERVICAL CANCER INCIDENCE	
H.2.12		PROSTATE CANCER INCIDENCE	
H.2.13		COLORECTAL CANCER INCIDENCE	
H.2.14		LUNG CANCER INCIDENCE	
H.2.15		CANCER DEATHS	
H.2.16		FEMALE BREAST CANCER DEATH RATE	
H.2.17		FEMALE GENITAL CANCER DEATH RATE	
H.2.18		CERVICAL CANCER DEATH RATE	
H.2.19		PROSTATE CANCER DEATH RATE	
H.2.20		COLORECTAL CANCER DEATH RATE	
H.2.21		LUNG CANCER DEATH RATE	
H.3	INFECTIOUS DISEASE		180 to 184
H.3.1		CHLAMYDIA INFECTION RATE	
H.3.2		GONORRHEA INFECTION RATE	
H.3.3		HIV INCIDENCE RATE	
H.3.4		CHILDREN AGE 19 TO 35 MONTHS WITH COMPLETE IMMUNIZATIONS	
H.3.5		KINDERGARTNERS WITH COMPLETE IMMUNIZATIONS	
H.3.6		SIXTH GRADERS WITH COMPLETE IMMUNIZATIONS	
H.3.7		ADULTS GETTING A FLU SHOT IN PAST YEAR	

KITSAP COUNTY HEALTH STATUS ASSESSMENT, 2019

TABLE OF CONTENTS

Section #	Section Name	Indicator Name	Page #
H.3.8		ADULTS AGE 65+ GETTING PNEUMONIA VACCINE IN PAST YEAR	
H.4	INJURY		185 to 189
H.4.1		UNINTENTIONAL INJURY HOSPITALIZATIONS	
H.4.2		LEADING CAUSES OF UNINTENTIONAL INJURY HOSPITALIZATIONS	
H.4.3		CHILD INJURY AND ACCIDENT HOSPITALIZATION RATE	
H.4.4		ADULT WOMEN AGE 18+ INJURY AND ACCIDENT HOSPITALIZATION RATE	
H.4.5		UNINTENTIONAL INJURY DEATHS	
H.4.6		LEADING CAUSES OF UNINTENTIONAL INJURY DEATHS	

KITSAP COUNTY HEALTH STATUS ASSESSMENT, 2019

DATA NOTES AND SOURCES

DATA NOTES

RATES

Most measures are proportions (%) or rates per 1,000, per 10,000 or per 100,000 residents. Age-adjusted and sex-adjusted rates are used to compare over time or between places to adjust for differences in gender or age distribution of the population.

SUPPRESSION OF DATA

Numbers are not displayed when counts are less than 10 due to risk of violation of a person's right to confidentiality. Rates and percentages are not calculated when the relative standard error is over 25%, indicating that the data may be unreliable due to small numbers and/or large amounts of variability. In any of these cases, * is displayed, which indicates that the numbers are small and the rate is unreliable.

TRENDS

Statistical trends over time are calculated using Joinpoint Regression Program version 4.7.0.0, February 2019. Statistical trends over time are only calculated for those indicators for which data are available for multiple and consecutive years. When trends over time are not available, statistical differences are calculated between two points in time using 95% confidence intervals and the X^2 test.

COMPARISON TO WASHINGTON STATE

Kitsap County statistical comparisons to Washington State for the most recent year were calculated using 95% confidence intervals and the X^2 test. Rarely, direct comparisons were made without the use of any statistical test, in these cases, the indicator simply reads 'Comparison: Kitsap vs. Washington'.

Note: Although some proportions/rates appear to be different over time or when compared, in this report, differences are only identified if they have been detected with 95% confidence using a statistical test. In general, the larger the numerator and denominator, the more likely a statistical difference or trend will be detected. Therefore, because of the larger numbers, a trend was detected much more often for the state than for the county, even when the state and county appear to have similar differences.

KITSAP COUNTY HEALTH STATUS ASSESSMENT, 2019

DATA NOTES AND SOURCES

SUB-COUNTY REGIONS

Depending on the data source, sub county regions were determined by grouped zip codes or school district designations. Census/ACS, DSHS Risk and Protection Profile, Healthy Youth Survey and OSPI use school districts; Vital Statistics and BRFSS use zip codes.

Sub-county regions by zip code designation:

Bainbridge Island area	98110					
Bremerton area	98310	98312	98314	98337		
Central Kitsap area	98311	98315	98380	98383		
North Kitsap area	98340	98342	98345	98346	98370	98392
South Kitsap area	98359	98366	98367			

POVERTY LEVEL GUIDELINES

In 2019, a one-person household earning less than \$12,490 or a family of 4 earning less than \$25,750 were considered to be living below 100% of the Federal Poverty Level. These guidelines are used to determine eligibility for many publically funded programs.

year	1-person	each additional person	4-person family
2000	\$8,350	\$2,900	\$17,050
2010	\$10,830	\$3,740	\$22,050
2015	\$11,770	\$4,160	\$24,250
2019	\$12,490	\$4,420	\$25,750

ABBREVIATIONS

In several instances throughout the report, it was necessary to use abbreviations to quickly portray ideas. The following abbreviations and symbols are used throughout the report:

- * indicates data comes from numbers < 10 or data that is variable and unreliable.
- ND indicates that no data is available for this year.
- NH indicates that the race does not include members who also identify as Hispanic.
- NHOPI Native Hawaiian and other Pacific Islander races
- AI/AN American Indian and Alaska Native races

DATA SOURCES

Behavioral Risk Factor Surveillance System (BRFSS)

BRFSS is an annual telephone survey conducted continuously throughout the year. It is a collaborative effort of the Centers for Disease Control and the WA State Dept. of Health. The survey collects information on a vast array of health conditions, health-related behaviors, and risk and protective factors about individual adult health. The survey uses a sampling methodology to create a representative sample for a given location. Because the survey is self-report, some data may be under or overestimated. In 2011, cell phone data were first included and sample methods were changed so comparisons to survey results prior to 2011 are no longer possible.

KITSAP COUNTY HEALTH STATUS ASSESSMENT, 2019

DATA NOTES AND SOURCES

Bureau of Economic Analysis

A Bureau of the United States Department of Commerce that contains state and county economic data.

Centers for Disease Control and Prevention, National Syndromic Surveillance Program

Electronic Surveillance System for the Early Notification of Community-based Epidemics (ESSENCE). Restricted on-line system with emergency department, urgent care, ambulatory clinic and inpatient hospital real-time data.

County Health Rankings

The Rankings are based on a model of population health that emphasizes the many factors that, if improved, can help make communities healthier places to live, learn, work and play. Building on the work of America's Health Rankings, the University of Wisconsin Population Health Institute has used this model to rank the health of Wisconsin's counties every year since 2003. Each year, rankings are produced for nearly every county in the US for 35 indicators representing health outcomes and health factors.

Healthy Youth Survey

The Healthy Youth Survey is conducted every two years among youth in grades 6, 8, 10 and 12. It is a collaborative effort of the Office of the Superintendent of Public Instruction, the WA State Dept. of Health, the WA State Dept. of Social and Health Service's Division of Behavioral Health and Recovery, Educational Service Districts and local health departments. The survey is voluntary and anonymous. The survey gathers reliable and current data about the perceptions, behaviors, and influences of youth on key topics affecting them. These data have some limitations: 1) results may not represent youth as not all students choose to participate; and 2) the survey relies on respondent's own report therefore some data may be under or overestimated. KPHD has signed agreements with all 5 Kitsap School Districts to be able to show school district level data.

Washington State Association of Sheriffs and Police Chiefs, Uniform Crime Report

Produced annually, the Crime in Washington report is compiled from monthly reports submitted by individual law enforcement agencies. These data have several limitations: 1) the amount and type of crime reported may differ due to reporting practices, law enforcement policies, population characteristics, and attitudes; 2) crime may not be accurately depicted, as the varying severity of offenses is not taken into account; 3) tribal law enforcement jurisdictions do not report their data. The reporting system changed in 2012 from the Summary Reporting System to the National Incident Based Reporting System (NIBRS) and therefore reports prior to 2012 are not comparable to those from 2012 and later.

Washington State Department of Commerce, Point in Time Count

The Homeless Housing and Assistance Act requires that each county in Washington State conduct an annual point in time count of sheltered and unsheltered homeless persons usually conducted during a 24-hour period in late January. This census is conducted in accordance with the requirements of the U.S. Department of Housing and Urban Development (HUD).

Washington State Department of Health, Center for Health Statistics, Vital Statistics Databases

The Washington State Department of Health maintains vital statistics databases with information about all county resident births and deaths. Data are obtained every year from the Department of Health for analysis. A limitation of vital statistics data is that some information may be missing from the reporting forms and therefore from the database. Death data are limited by the inconsistency and incompleteness of reported causes of death (usually done by the attending physician).

Washington State Department of Health, Chronic Hepatitis B and Chronic Hepatitis C Surveillance Report

Contains state and county level chronic hepatitis data. Chronic Hepatitis B and C are notifiable conditions.

KITSAP COUNTY HEALTH STATUS ASSESSMENT, 2019

DATA NOTES AND SOURCES

Washington State Department of Health, Community Health Assessment Tool (CHAT)

CHAT is an on-line platform provided and maintained by the Washington State Department of Health for the purpose of community health assessment. The data provided in CHAT come from many sources, including the Vital Statistics databases, Comprehensive Hospital Abstract Reporting System (CHARS), Washington State Department of Health - Cancer Registry, notifiable conditions, BRFSS and others.

Washington State Department of Health, HIV/AIDS Surveillance Report

Contains the most up-to-date, comprehensive data about people diagnosed with HIV in Washington and provides state and county-level data.

Washington State Department of Health, Office of Immunization and Child Profile

WA State Immunization Information System is maintained by the Washington State Department of Health Immunization Program and is an online immunization registry. Data that can be accessed include numbers of children entering kindergarten, by county, with a complete, conditional, out of compliance (incomplete) immunization series, or exempt status. A new law took effect in July 2011 that requires a licensed health care provider to sign the Certificate of Exemption for a parent or guardian to exempt their child from school and child care immunization requirements.

Washington State Department of Health, Washington Tracking Network

An online system with indicators tracked over time by Department of Health, available at the state and county level.

Washington State Department of Health, Synar Compliance Check Database

The FDA conducts inspections of tobacco product retailers to determine a retailer's compliance with federal laws and regulations, including The Federal Food, Drug, and Cosmetic Act, as amended by the Tobacco Control Act, and rules and regulations.

Washington State Department of Health, WIC Annual Summary Data

Data about WIC participation, services provided and dollars spent are made available to the general public each year. All reports are for the October through September Federal Fiscal Year (FFY).

Washington State Department of Social and Health Services, Risk & Protection Profile for Substance Abuse Prevention

Risk and Protection Profile for Substance Abuse Prevention is produced annually at the state, county and school district levels, and includes indicators of child, family, adult and community well-being. Data relating to crime reporting may have limitations as not all law enforcement jurisdictions, such as the tribes, report their data.

Washington State Health Care Authority

Number of individuals eligible for Medicaid dental services and number of individuals accessing services.

Washington State Office of Community Health Systems, Rural Health Section, Health Professional Shortage Areas

Health professional shortage areas as determined by surveys to identify numbers of health professionals in an area.

KITSAP COUNTY HEALTH STATUS ASSESSMENT, 2019

DATA NOTES AND SOURCES

Washington State Office of Financial Management

The Office of Financial Management produces annual population estimates based on Census data by age, gender and race at the state and county levels. Through the Small Area Estimates Program, select data is also available at the school district level. OFM also produces counts of available housing within the county and state.

Washington State Office of Superintendent of Public Instruction

The Office of the Superintendent of Public Instruction provides data for enrollment, graduation and drop-out rates, academic achievement as measured by standardized statewide exams, students experiencing homelessness and the number of students eligible for free and reduced-priced meals (FRL). FRL data have some limitations: 1) eligible students might be underrepresented depending on the time of year that statistics are collected, e.g. students may not yet be signed up in October; 2) eligibility status might change during the school year resulting in an under or overestimate of program participants; 3) data do not include children who are not enrolled in school, are home-schooled, or attend private schools.

Washington Statistical Analysis Center, Washington State County Criminal Justice Data Book

The Washington Statistical Analysis Center (SAC) is a center within the Washington State Office of Financial Management and part of a network of similar centers supported by the Justice Research and Statistics Association and the Bureau of Justice Statistics. The SAC conducts and publishes objective, policy-relevant research and analysis on justice issues, provides technical assistance, and maintains a clearinghouse of state justice-related data.

University of Washington - Center for Real Estate Research

Statistics on the housing market in Washington State, available by county.

U.S. Census and American Community Survey

The Census and American Community Survey collect data about population, housing and economy. The Census is conducted every 10 years; the American Community Survey is conducted annually in communities with populations of >60,000. Using ACS data for a combined five-year period allows for analysis of data from smaller populations. Previously, 3-year estimates were produced but are no longer available.

U.S. Census State and County Business Patterns

Data for registered establishments by industry including number of establishments, number of employees, and payroll data. Excludes self-employed individuals, employees of private households, railroad employees, agricultural production employees, and most government employees.

U.S. Department of Agriculture (USDA), Food Research Atlas and Food Environment Atlas

These reports contain food environment factors, such as store/restaurant proximity, food prices, food and nutrition assistance programs, and community characteristics at the state and county level.

U.S. Department of Agriculture (USDA), Food and Nutrition Service

The Food and Nutrition Service provides a SNAP Retail Locator, so that people using SNAP benefits can look up stores that accept them.

U.S. Department of Labor, Bureau of Labor Statistics, Local Area Unemployment Statistics

Employment statistics by State and County.

Local Kitsap County Sources:

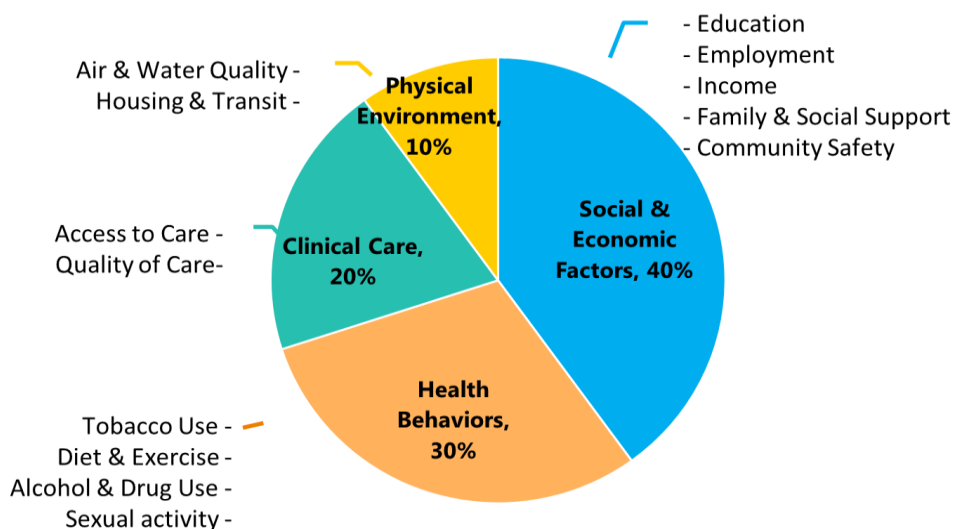
Bremerton Housing Authority. Housing Kitsap. Kitsap Community Resources, Housing Solutions Center.

TABLE OF CONTENTS

WHAT IS COMMUNITY HEALTH?

Community health encompasses the health experiences of all individuals and the community context into which people are born and live their lives. Health is not only determined by health care, personal behaviors and genetics, but also by social, economic and environmental factors.

Diagram of the Factors Influencing Health



The County Health Rankings & Roadmaps has a model that describes the amount of influence the above factors have on health (<http://www.countyhealthrankings.org/our-approach>):

These factors which influence health result in measurable health outcomes, including morbidity (quality of life) and mortality (length of life).

This compilation of community health measures contains data about demographics, socioeconomic, the environment and 'health', including health behaviors, health care and health outcomes, for Kitsap County and Washington State. It is not intended to be a comprehensive report of all community health measures as there are many others; however, these measures were chosen due to their standard use, the availability and reliability of data and the ability to track the measures over time and to compare across geographies. These data will hopefully be reviewed and discussed, along with the experiences of those living and working in Kitsap County, in a collaborative process to improve health that:

- identifies community issues,
- prioritizes community issues and,
- drives decision-making around these issues.