

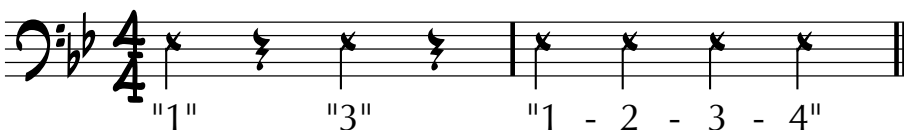
BASS Trombone

Composed by Dr. Eric Richards 2014  
Glenn Korff School of Music @ UNL  
<http://music.unl.edu/eric-richards>

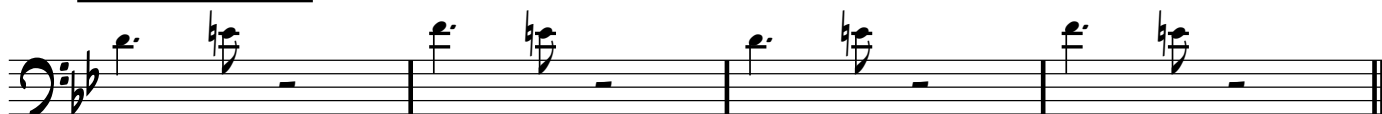
# NMEA All State Jazz Audition ETUDE A1 - SHUFFLE

*Shuffle* (Swing 8ths): M.M. ♩ = 144

COUNTOFF:



INTRO (Organ)



ETUDE



## IMPROVISE!

Three staves of music showing various chords in G minor. The first staff shows Gm9 and G7(#9). The second staff shows Cmi7 and Gmi9. The third staff shows Eb13(b5), D7(#9), Gmi11, and D7(#9).

## 2nd CHORUS

Three staves of musical notation for a bass line. The first staff shows a Gmi9 chord, followed by a G7(#9) chord. The second staff shows a Cmi7 chord, followed by a Gmi9 chord. The third staff shows an Eb13(b5) chord, followed by a D7(#9) chord, and then a Gmi11 chord.