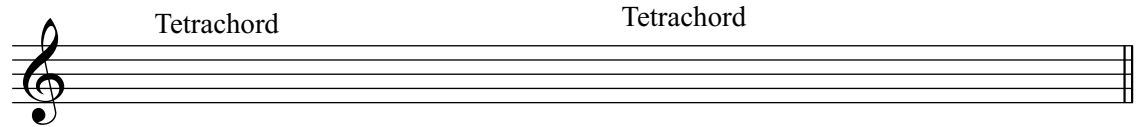


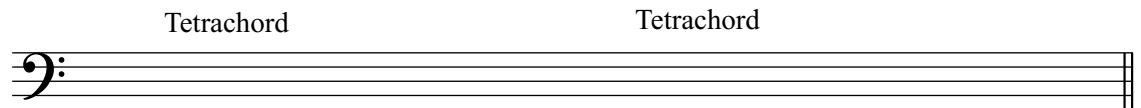
# scale exercises

Write the following scales by using the 2 tetrachords that form the scale.  
Fill in the name of the tetrachords at the top of the scale.  
Name the notes. Watch the clefs.

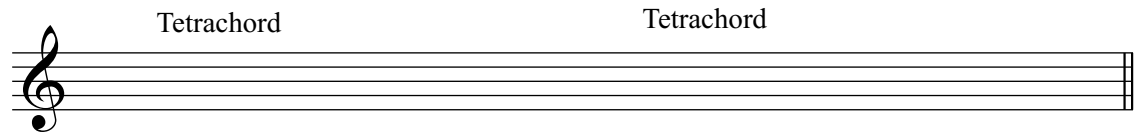
a) the scale with no accidentals (sharps or flats)



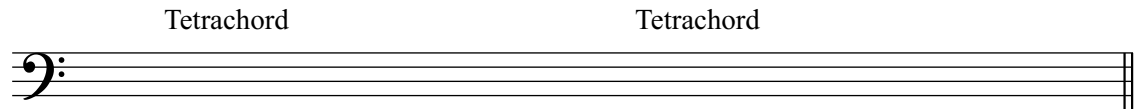
b) the scale with the top Tetrachord beginning on D



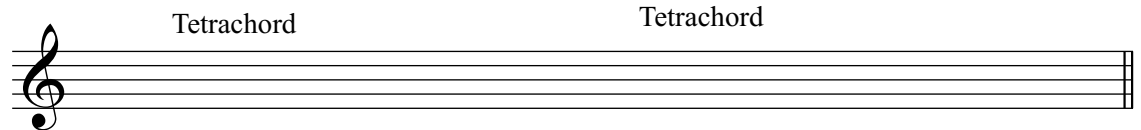
c) the scale with the bottom Tetrachord beginning on D



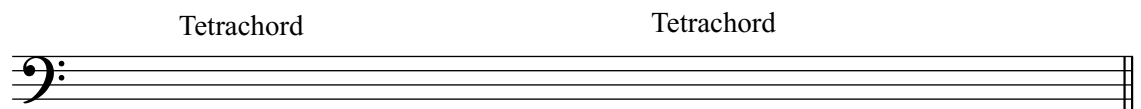
d) the scale with the following sharps: F# C# G#



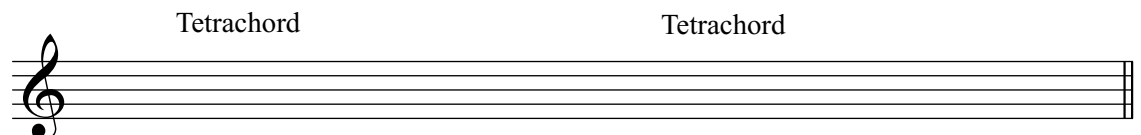
e) the scale with 4 sharps



f) the scale with the top Tetrachord beginning on F#



g) the scale with the bottom Tetrachord beginning on F#



h) the scale with all 7 sharps

