



*Troy Town Center,
Troy, Michigan*



*Alexandria,
Virginia*



*Birmingham,
Michigan*



Ocala, Florida

Retail Consulting and Market Research

- Troy Town Center, Troy, Michigan: 2016-2017
- Wilsonville, Oregon: 2017
- International Boulevard Neighborhood, Tukwila, Washington: 2017
- Tradition, Mississippi: 2017
- Central Area, Seattle, Washington: 2017
- Sammamish, Washington: 2017
- Village 9, Otay Ranch, California: 2017
- City Center, Manassas Park, Virginia: 2017
- Lower Merion Township, Pennsylvania: 2017
- Kalamazoo, Michigan: 2017
- Highland Park, Michigan: 2017
- South Shore, Hamburg, New York: 2017
- Fargo, North Dakota Retail Merchandising: 2017
- Delray Beach, Florida: 2017
- Conway, South Carolina Retail Workshop: 2017
- Buckeye Lake, Ohio: 2017
- Niagara-on-the-Lake, Ontario, Canada: 2016-2017
- Warren, Michigan: 2016
- MacDonnell Heights, Poughkeepsie, New York: 2016
- New Port Richey, Florida: 2016
- Albuquerque, New Mexico: 2016
- Charleston, North Carolina: 2016
- Old English Square, Holbrook, Massachusetts: 2016
- Chatham Park, Pittsboro, North Carolina: 2016
- Saddle Creek, Omaha, Nebraska: 2016
- Bangor Township, Michigan: 2016
- Frankenmuth, Michigan: 2016
- Ferndale, Michigan: 2016
- Detroit Fairgrounds: 2016
- Conyers, Georgia: 2016
- New Orleans, Louisiana: 2016
- Infinite Energy Center Campus, Duluth, Georgia: 2016
- Princeton Village, Miami, Florida: 2016
- Omaha, Nebraska: 2016
- Cuyahoga Falls, Ohio: 2016
- Lakeway Town Center, Lakeway, Texas: 2016
- Grosse Pointe, Michigan: 2016
- Southfield Town Center, Southfield, Michigan: 2016
- Pontiac, Michigan: 2016
- Hazel Park, Michigan: 2016
- Renn Farm, Frederick, Maryland: 2016
- Las Cruces, New Mexico: 2016
- Summers Corner, East Edisto, South Carolina: 2016
- North Palm Beach Village: 2016
- Shelby Town Center, Shelby Township, Michigan: 2016
- Sammamish, Washington: 2016
- Longwood, Florida: 2015
- Helena, Montana: 2015
- Ferndale, Michigan: 2015
- Whitehall Village, Delaware: 2015
- Perdido Key, Florida: 2015
- Fort Smith, Arkansas: 2015
- Amelia Park, Amelia Island, Florida: 2015
- Avenir, Florida: 2015
- Bonita Springs, Florida: 2015
- Spokane, Washington: 2015
- Chattahoochee, Georgia: 2015
- Chelsea, Michigan: 2015
- Londonderry, New Hampshire: 2015
- Dearborn, Michigan: 2015
- Deerfield Beach CPAT, Florida: 2015
- Dowagiac, Michigan: 2015
- Evans Town Center, Columbia County, Georgia: 2015
- Langtree Lake Norman, Mooresville, North Carolina: 2015
- Rosemary Beach, Florida: 2015
- South Ft. Wayne, Indiana: 2015
- Tucker-Northlake Community Improvement District, Tucker, Georgia: 2015
- Uptown Normal, Illinois: 2015
- Village Center, Deerfield Beach, Florida: 2015
- Winter Park, Florida: 2015



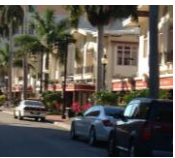
*Marquette,
Michigan*



*Charleston,
South Carolina*



Houston, Texas



Sarasota, Florida

- Vacaville, California: 2015
- Adrian, Michigan: 2014
- Alafaya, Florida: 2014
- Big Sky Resort, Montana: 2014
- Boyne Mountain Resort, Boyne, Michigan: 2014
- Columbia, Maryland: 2014
- Corunna, Michigan: 2014
- Daytona Beach, Florida: 2014
- Dover, New Hampshire: 2014
- Downtown Holland, Michigan: 2014
- Downtown, Rosemary District, MLK Corridor & St. Armands Circle, Sarasota, Florida: 2014
- Farmington, Michigan: 2014
- High Street, Atlanta, Georgia: 2014
- Historic Richmond Town, Staten Island, New York: 2014
- Houston, Texas, Regent Square: 2014
- Indian School Road, Phoenix, Arizona: 2014
- Kennesaw, Georgia: 2014
- Norwalk, Connecticut: 2014
- Panama Pacifica, Panama, South America: 2014
- Sarasota, Florida: 2014
- Seabrook, Washington: 2014
- South Bend, Indiana: 2014
- St. Elmo's Village, Chattanooga, Tennessee: 2014
- Summers Corner, East Edisto, South Carolina: 2014
- The Banks, Cincinnati, Ohio: 2014
- The Village at Grand Traverse Commons, Traverse City, Michigan: 2014
- Town Center Area Community Improvement District, Atlanta, Georgia: 2014
- West Side Corridors, South Bend, Indiana: 2014
- Winter Haven, Florida: 2014
- Abacoa Town Center, Jupiter, Florida: 2012-2013
- Beverly Hills, Michigan: 2013
- Carlisle, Pennsylvania: 2012-2013
- Carter Country Club, Lebanon, New Hampshire: 2013
- Chum's Corner, Blair Township, Michigan: 2013
- Coconut Grove, Florida: 2013
- Des Moines, Iowa: 2012-2013
- Downtown North, Hartford, Connecticut: 2013
- Downtown Ocala, Florida: 2013
- Fantasy Springs, California: 2013
- Florida Hospital, Orlando, Florida: 2013
- Freshfields Village, Kiawah, South Carolina: 2013
- Hamlin Town Center, Horizon West, Orlando, Florida: 2013
- Jensen Beach, Florida: 2013
- Malbis Plantation, Daphne, Georgia: 2013
- Marquette, Michigan: 2013
- Mitchell Ranch, Pasco County, Florida: 2013
- Oak Park, Michigan: 2013
- Oxford Road, Fern Park, Florida: 2013
- Palm Beach Gardens, Florida: 2013
- Patrick Square, Clemson, South Carolina: 2013
- Santa Ana, Albuquerque, New Mexico: 2013
- South Memphis, Tennessee: 2012-2013
- Stonecrest Mall, Lithonia, Georgia: 2013
- Village of Southampton, New York: 2013
- Waterset Community, Apollo Beach, Florida: 2013
- Woodward Corridor, Detroit, Michigan: 2013
- Abacoa Town Center, Jupiter, Florida: 2012
- Butler Plaza, Gainesville, Florida: 2011- 2012
- Carlisle, Pennsylvania: 2012
- Carmel, Indiana: 2012
- Coconut Grove, Florida: 2012
- Daytona Beach, Florida: 2012
- Gainesville, Florida: 2012
- Grand Rapids, Michigan: 2012
- King of Prussia, Pennsylvania: 2012
- Lexington Depot District, Lexington, North Carolina: 2012
- Londonderry, New Hampshire: 2010, 2012
- Nine Springs, Fitchburg, Wisconsin: 2012
- Pier 57, New York, New York: 2012
- Royal Park Hotel, Toronto, Ontario: 2012
- Southfield, Michigan: 2012

Walnut Street Corridor, Des Moines, IA: 2012
 West Ocala, Florida: 2012
 Woodstock, Georgia: 2012
 Butler Plaza, Gainesville, Florida: 2011
 Coligny, Hilton Head Island, South Carolina: 2011
 Daytona Beach, Florida: 2011
 Downtown Santa Cruz, California: 2011
 East Highway 192 Corridor, Osceola County, Florida: 2011
 Fresno, California: 2011
 Fulton Mall, Fresno, California: 2011
 Green Lake Township, Michigan: 2011
 Interlochen, Michigan: 2011
 Master Plan Peer Review, Galveston, Texas: 2011
 Maxwell Boulevard, Montgomery, Alabama: 2011
 Mesquite, Texas: 2011
 Montgomery, Alabama: 2011
 Narcoossee Road Corridor, Osceola County, Florida: 2011
 Santa Cruz, California: 2011
 Volcano Heights Town Center, Albuquerque, New Mexico: 2011
 Windsor, Connecticut: 2011
 International District, Albuquerque, New Mexico: 2010
 West Central District, Albuquerque, New Mexico: 2010
 Martineztown Commercial District, Albuquerque, New Mexico: 2010
 Port Sanilac, Michigan: 2010
 Londonderry, New Hampshire: 2010
 Reston Heights, Virginia: 2010
 Revelstoke, B.C., Canada: 2010
 GardenWalk Center, Anaheim, California: 2010
 Daybreak Town Center, South Jordan, Utah: 2010
 Tyson's West, Virginia: 2010
 Historic Market Hall, Charleston, South Carolina: 2010
 West Palm Beach, Florida, TCRPC: 2010
 Fantasy Springs Resort Casino, Indio, California: 2009-2010
 City of Houston, Texas: 2009
 Kailua-Kona, Hawaii: 2009
 City of Wasilla, Alaska: 2009
 King Street Long Range Retail Plan, Alexandria, Virginia: 2009
 Chesterfield Town Center, Chesterfield, Missouri: 2009
 Naples, Florida: 2009
 Jupiter, Florida: 2009
 Palm Beach Gardens: 2009
 Grand Rapids, Michigan: 2009
 Whitehall, Delaware: 2009
 City of Holland, Michigan: 2009
 Lacey Gateway Town Center, Lacey, Washington: 2009
 New Smyrna Beach, Florida: 2009
 Wildwood, Missouri: 2009
 Public Market Analysis: Kitchener, Ontario: 2009
 Fauberg Boisbriand, Montreal, Quebec: 2008
 Clarkstown, New York: 2008
 Potomac Yard, Alexandria, Virginia: 2008
 New Town at Liberty, Liberty, Missouri: 2008
 Rio, Florida: 2008
 Mixson Town Center, North Charleston, South Carolina: 2008
 Lancaster, Pennsylvania: 2008
 Griffin Park, Greenville, South Carolina: 2008
 Saugatuck, Michigan: 2008
 City of Plano, Texas: 2008
 City of Carmel, Indiana: 2008
 Kirkland Park Place, Kirkland, Washington: 2008
 Tohoqua Town Center, Lake Toho, Florida: 2008
 Downtown City Center, Carmel, Indiana: 2008
 Bradford Health Services, Madison, Alabama: 2008
 The Roses, Bossier Parish, Louisiana: 2008
 Palm Beach Mall, West Palm Beach, Florida: 2008
 Van Dorn Commercial Study, Alexandria, Virginia, 2008
 East Lansing, Michigan: 2008
 Bossier Town Center, Bossier Parish, Louisiana: 2008
 Beverly Hills, Michigan: 2008
 City of Alexandria, Virginia: 2008
 751 Village, Durham, North Carolina: 2008



Hotel Walloon



Walloon Village, Michigan



Coconut Grove, Florida



Bonita Springs, Florida



Carmel, Indiana



Warren, Michigan

- Charleston, South Carolina: 2008
- NASA Site Redevelopment, Downey, California: 2008
- Clarksburg Town Center, Clarksburg, Maryland: 2008
- South Chapel Hill Town Center, Durham, North Carolina: 2008
- Hendrix College, Conway, Arkansas: 2008
- University of Miami Medical District, Miami, Florida: 2008
- Dahlonega, Georgia: 2007
- Dardenne Prairie, Missouri: 2007
- Downtown Airpark, Oklahoma City, Oklahoma: 2007
- East Beach Town Center, Norfolk, Virginia: 2007
- Gulfport Highlands, Gulfport, Mississippi: 2007
- Hampton Roads Crossing, Suffolk, Virginia: 2007
- Hutto Town Center, Hutto, Texas: 2007
- Jackson Memorial Medical Center, Miami, Florida: 2007
- Long Savannah Plantation, Charleston, South Carolina: 2007
- Mariner's Cove, Lake Toho, Florida: 2007
- Newcastle Town Center, Newcastle, Oklahoma: 2007
- Noah's Ark Town Center, St. Charles, Missouri: 2007
- Oklahoma City Downtown Air Park, Oklahoma City, Oklahoma: 2007
- Portland Development Center, Portland, Oregon: 2007
- Punta Cacique, Costa Rica: 2007
- Raleigh-Durham, North Carolina: 2007
- River District Village Center, Liberty Lake, Washington: 2007
- River Lights Town Center, Wilmington, North Carolina: 2007
- Sprague/Appleway Corridor Revitalization, Spokane Valley, Washington: 2007
- The Petroglyphs, Albuquerque, New Mexico: 2007
- Trinity River Properties, Dallas, Texas: 2007
- Tuxedo & Tuxedo Park, New York: 2007
- Village at Hendrix, Conway, Arkansas: 2007
- West Ocala, Florida: 2007
- West Palm Beach Mall, West Palm Beach, Florida: 2007
- Palm Beach County, Florida: 2006
- North Carolina Research Campus, Kannapolis, North Carolina: 2006
- Long-term Planning & Development, Central Florida Panhandle: 2006
- Proposed Town Center, Baton Rouge, Louisiana: 2006
- Erie Station II, West Henrietta, New York: 2006
- Water's Edge, Athens, Georgia: 2006
- Town Center, Houston, Texas: 2006
- City of Whittier, California: 2006
- Santa Ana Town Center, Albuquerque, New Mexico: 2006
- Taylor Crossings, Idaho Falls, Idaho: 2006
- Melon Valley, Hurricane, Utah: 2006
- SW Albuquerque Regional Study, Albuquerque, New Mexico: 2006
- City of Ballwin, Missouri: 2006
- Proposed Town Center, Osceola, Florida: 2006
- Bannister Mall, Kansas City, Missouri: 2006
- Goodyear, Arizona: 2006
- Placentia, California: 2006
- Lincoln, Nebraska: 2006
- Niagara Falls, Canada: 2005
- Vilano Beach, Florida: 2005
- St. Armand's Circle Business District, Sarasota, Florida: 2005
- York Township, Michigan: 2005
- Burr Ridge Town Center, Burr Ridge, Illinois: 2005
- East Fraserlands Town Center, Vancouver, BC: 2005
- Proposed Town Center, Rochester, New York: 2005
- Daytona, Florida: 2005
- Metro Health Center, Grand Rapids, Michigan: 2004
- University of Connecticut: 2004
- D-C Ranch, Scottsdale, Arizona: 2004
- Ashford, England, Expansion Master Plan: 2004
- Biltmore Farms, Ashville, North Carolina: 2004
- Jekyll Island, Georgia: 2003
- Ponce de Leon Avenue Retail Study, San Juan Puerto Rico: 2003
- Town Center Study, City of University Place, Washington: 2002
- Mart Dock Waterfront Retail Study, Muskegon, Michigan: 2002
- Bolton Road Market Study, Atlanta, Georgia: 2002
- Cooley Farms Position Paper, Gilbert, Arizona: 2002
- Market Study, Alfreda, Georgia: 2002
- Market Study, Lower East Side Convent Hill, Milwaukee, 2002
- Market Study, Near West Side-Highland Park, Milwaukee, 2002



Oak Park, Michigan



Carlisle, Penna.



Easton Town Center, Columbus, Ohio



Seaside, Florida



Wasilla, Alaska

Rosemary Beach, Florida, Town Center Study: 2002
 Frisco Square, Frisco, Texas: 2002
 Glenview Naval Station Town Center, Glenview, Illinois: 2002
 Downtown Waterfront Study, Jupiter, Florida: 2001
 Corridor Study, 28th Street, Wyoming, Michigan: 2001
 Town Center, Prairie Crossing, Illinois: 2001
 Corridor Study, Harper Avenue, St. Clair Shores, Michigan: 2001
 Redevelopment Plan, Greenbrier Mall, Atlanta, Georgia: 2001
 Corridor Study, Van Dyke Highway, Warren, Michigan: 2001
 Redevelopment Plan, Antioch Mall, Kansas City, Missouri: 2001
 Town Center, General Motors Tech Center, Warren Michigan: 2001
 Mexican Town, SW Detroit, Michigan: 2001
 Hope VI Redevelopment Project, Norfolk, Virginia: 2000
 Downtown Study, Bloomington, Indiana: 2000
 Microsoft Regional Offices, Seattle, Washington: 2000
 San Elijah Town Center, Carlsbad, California: 2000
 Coffee Creek Town Center, Chesterton, Indiana: 2000
 DuPont Town Center, DuPont, Washington: 2000
 Harmony Town Center, Orlando, Florida: 2000
 Downtown Macon Revitalization, Macon, Georgia: 2000
 Downtown Study, Portland, Oregon: 2000
 Eastgate Mall Retail Planning Study, Chattanooga, Tennessee: 1999
 North Broadway Project Retail Market Research, Tacoma, Washington: 1999
 Stop & Shop Supermarket Company Retail Analysis, Bloomfield, Connecticut: 1999
 Retail Planning Study, Cambridge, Massachusetts: 1999
 Chattanooga, Tennessee, Eastgate Mall Retail Planning Study: 1999
 Central Square, Cambridge, Massachusetts: 1999
 Redevelopment Project, Bon Marche Mall, Baton Rouge, Louisiana: 1999
 Redevelopment Project, Northland Mall, Southfield, Michigan: 1999
 Retail Planning Study, Chicago, Illinois: 1999
 Retail Planning Study, Melbourne, Australia: 1999
 Ellard Village Retail Planning Study, Roswell, Georgia: 1999
 Retail Planning Study, Sydney, Australia: 1999
 Inner Harbor East Retail Market Research, Baltimore, Maryland: 1998-1999
 Town Center Analysis, Kentland's, Gaithersburg, Maryland: 1998
 Marina Commercial Study, WCI Communities, Bonita Springs, Florida: 1998
 Retail Market Analysis and Site Planning, Trenton, New Jersey: 1998
 Retail Planning Study, Arlington, Texas: 1998
 Retail Market Study, Asheville, North Carolina: 1998
 Retail Planning Study, Austin, Texas: 1998
 Downtown Retail Market Analysis & Retail Master Plan (DPZ lead), Baton Rouge, Louisiana: 1998
 Retail Planning Study, Boulder, Virginia: 1998
 Retail Planning Study, Charlottesville, Virginia: 1998
 Miracle Mile Retail Study (The Taubman Company lead), Coral Gables, Florida: 1998
 Retail Market Study, Covington, Louisiana: 1998
 Retail Planning Study, Davidson, North Carolina: 1998
 Retail Planning Study, Dexter, Michigan: 1998
 Market Analysis & Retail Planning Study, Galveston, Texas: 1998
 Market Analysis, Guelph, Ontario: 1998
 Visual Merchandising Presentation, Jeffersonville, Indiana: 1998
 State Street Market Analysis (JJR lead), Madison, Wisconsin: 1998
 Grand Avenue Retail Market & Financial Analysis, Milwaukee, Wisconsin: 1998
 Retail Market Analysis, Oconomowoc, Wisconsin: 1998
 High Street strategy and overall tenant mix, Ohio State University: 1998
 Retail Planning Study, Orlando, Florida: 1998
 Market Analysis, City of Plano, Texas: 1998
 Market Analysis, Quincy, Michigan: 1998
 Retail Planning Study, Smyrna, Georgia: 1998
 Central Business District & Neighborhoods Retail Market Analysis, St. Paul, Minnesota: 1998
 Market Analysis & Retail Planning Analysis (Dover Kohl Associates lead), Winter Springs, Florida: 1998
 Downtown Master Plan, Bennettsville, South Carolina: 1997
 Retail Market Analysis, Belmont, North Carolina: 1997
 Market Analysis & Retail Planning Analysis, DuPont, Washington: 1996-1997
 Market Analysis & Retail Planning Analysis, Eagle, Colorado: 1996-1997
 Retail Market Analysis, Hillsdale, Michigan: 1997
 Retail Planning Study, Long Beach, California: 1997
 Retail Market Analysis, Merritt Island, Florida: 1997
 Visual Merchandising Presentation, Norfolk, Virginia: 1997
 Retail Study (McKenna & Associates lead), Richmond, Michigan: 1997
 Fifth Avenue & Third Street Downtown Study, Naples Florida: 1996
 Downtown Study, Northville, Michigan: 1996

Retail Master Plan (DPZ lead), Bennettsville, South Carolina: 1996
 Rodeo Drive-Golden Triangle Retail Planning Study, Beverly Hills, California: 1996
 Market Void Analysis, 42nd and Walnut Streets, University of Pennsylvania, Philadelphia: 1995-1996
 Clematis Street Study, West Palm Beach: 1995
 Retail Planning Study (DPZ lead), Gaithersburg, Maryland: 1995
 Homewood Building Retail Market Analysis, John Hopkins University, Baltimore, Maryland: 1995
 5th Avenue Retail Master Plan (DPZ lead), Naples, Florida: 1995
 Downtown Retail Master Plan, West Palm Beach, Florida: 1993
 Retail Study (DPZ lead), Providence, Rhode Island: 1992
 Fairlane Town Center Mall Entry Renovation, Dearborn, Michigan: 1991

Urban Planning Consulting



Troy Town Center, Troy, MI



Palmer Park, Detroit, MI



Three Rivers, MI

Warren, Michigan Streetscape: 2017
 Troy, Michigan Town Center Master Plan: 2016-2017
 Wixom, Michigan Town Center Concept Plan: 2016
 Detroit Zoo: 2016
 Gateway Innovation District, Lansing, Michigan: 2016
 Crooks Road Site, Troy, Michigan: 2016
 Shelby Town Center, Shelby Township, Michigan: 2016
 Troy, Michigan: 2015
 Three Rivers, Michigan: 2015
 Pontiac, Michigan: 2015
 Walloon, Michigan: 2015
 Dearborn, Michigan Sustainable Parking Lots: 2015
 Chandler Crossings, Lansing, Michigan: 2014
 East Bay Plaza, Traverse City, Michigan: 2014
 Eddington Square, Rochester Hills, Michigan: 2014
 Brush Park, Detroit, Michigan: 2014
 Bloomfield Hills, Michigan: 2014
 Palmer Park, Detroit, Michigan: 2014
 The Village at Grand Traverse Commons: 2014
 Alpena, Michigan: 2013
 Walloon Village, Michigan: 2013
 Markham, Unionville, Ontario, Canada: 2013
 Grand Rapids, Michigan: 2012
 Chesterfield, Missouri: 2012
 Downtown Commercial Master Plan: City of Daytona Beach, Florida 2011
 Downtown Commercial Master Plan: Santa Cruz, California: 2011
 Commercial Study: City of Montgomery, Alabama: 2011
 Interlochen Village, Green Lake Township, Michigan: 2011
 Narcoossee Road Corridor, Osceola County, Florida: 2011
 East Highway 192 Corridor, Osceola County, Florida: 2011
 SR-7 Corridor, Palm Beach County, Florida: 2010
 Houston Central Business District, Houston, Texas: 2009-2010
 Master Plan: City of Wasilla, Alaska: 2009
 Master Plan: City of Damariscotta, Maine: 2009
 Master Plan: Beverly Hills, Michigan: 2009
 Kirkland Town Center Master Plan (LMN Architects lead consultant): 2009
 Palm Beach Gardens Master Plan (Treasure Coast Regional Planning Commission lead): 2009
 Old Town Master Plan, Alexandria, Virginia: 2009
 Hutt, New Zealand CBD: 2008
 Consulting: City of Carmel Central Business District, Carmel, Indiana: 2008
 Fort Pierce, Florida, TCRPC: 2008
 Fort Worth, Florida, TCRPC: 2008
 Jensen Beach, Florida, TCRPC: 2008
 Margate, Florida, TCRPC: 2008
 Master Plan: City of Palm Beach, Florida, TCRPC: 2008
 ULI Council: Speedway, Indiana, ULI Advisory Panel: 2008
 City of Plano, Texas: 2008
 Master Plan: City of Alexandria, Virginia: 2008
 City of Downey, California: 2008
 Sprague/Appleway Corridor, City of Spokane Valley, Washington: 2007-2008
 Albuquerque, New Mexico, South Yale Corridor: 2007
 Rockville Pike Corridor, Maryland: 2007
 City of Charleston, South Carolina: 2007
 Jensen Beach, Florida: 2007
 St. Louis Park, Minnesota: 2007
 Temecula, California, Master Plan: 2007
 Louisiana Recovery Authority: 2006
 West Palm Beach, Florida: 2006
 Downtown Placentia, California, Master Plan: 2006*



Northville, Michigan



Village of Interlochen, Michigan

- Downtown Master Plan, Santa Ana, California: 2006*
- Downtown Master Plan, Whittier California: 2006*
- Niagara Falls, Canada: 2005-2006*
- Overland Park, Kansas, Master Plan Review: 2006
- Downtown Study, Crystal River, Florida: 2005
- State of Florida, Community Development: 2005
- Downtown Plan, Sarasota Florida: 2004-2005
- Town Expansion Plan, Ashford, England: 2004
- Zoning Study, Austin, Texas: 2004
- University of Connecticut Town Center Plan, Storrs, Connecticut: 2004
- East Lansing-Michigan State University: 2003-2004
- King Street & Market Square Retail Plan, Charleston, South Carolina: 2003
- Westgate Master Plan, Toledo, Ohio: 2003
- Downtown Plan, Wilkes-Barre, Pennsylvania: 2003
- Third Ward Master Plan, St. Louis: 2002
- Northwest Expansion for 40,000 population, Dublin, Ireland: 2001
- Harper Avenue Corridor, St. Clair Shores, Michigan: 2001
- Downtown Study, Bloomington, Indiana: 2000
- Mid-Block Task Force, Portland, Oregon: 2000
- Downtown Study, Macon, Georgia: 2000
- Downtown Study, Kirkland, Washington: 2000
- Downtown Master Plan, Lake Orion, Michigan: 2000
- Master Plan, Macon, Georgia: 2000
- Master Planning Study, Normal, Illinois: 2000
- Downtown Study, Illinois State University, Normal, Illinois: 2000
- Master Plan, Grosse Pointe Farms, Michigan: 1999
- Retail Market Analysis and Site Planning, Trenton, New Jersey: 1999
- CBD Master Plan (DPZ lead), Baton Rouge, Louisiana: 1998
- Master Plan (DPZ lead), Hickory, North Carolina: 1998
- CBD Study, Lower Hutt, New Zealand: 1997-1998
- CBD Master Plan and Charrette, Macomb Township, Michigan: 1998
- CBD Study, St. Paul, Minnesota: 1998
- CBD Study, Wildwood, Missouri: 1998
- High Street Master Plan, Ohio State University, Columbus, Ohio: 1998
- State Street Master Plan, University of Wisconsin, Madison, Wisconsin: 1998
- Hartford Road Corridor Study (DPZ lead), Baltimore, Maryland: 1997
- Downtown Master Plan, Bennettsville, South Carolina: 1997
- Howell CBD Master Plan, Howell, Michigan: 1997
- Third Ward Public Market Plan, Milwaukee, Wisconsin: 1997
- Master Plan Evaluation, Naples, Florida: 1997
- CBD Master Plan, Northville, Michigan: 1997
- Sunset Transit Station Planning Study, Washington County, Oregon: 1997
- City Master Plan Study, Birmingham, Michigan: 1996
- City Master Planning Study, Cedar Mill, Oregon: 1996
- Retail Planning Study (Lennertz Coyle lead), Forest Grove, Oregon: 1996
- Cedar Mill Retail Market Study (Lennertz Coyle lead), Portland, Oregon: 1996
- Urban Shopping Center Study, Windsor, Ontario: 1996
- Adaptive Re-Use Study, John Hopkins University, Baltimore, Maryland: 1996
- 42nd Street Master Planning Study, University of Pennsylvania, Philadelphia, Pennsylvania: 1996
- Walnut Street Master Planning Study, University of Pennsylvania, Philadelphia, Pennsylvania: 1996
- Lincoln Road Infill Redevelopment Study (DPZ lead), Miami Beach, Florida: 1995
- South Beach Planning Charrette, Miami Beach, Florida: 1995
- Fifth Avenue Master Plan, City of Naples, Florida: 1995
- CBC Master Plan, Oxnard, California: 1995
- Master Plan, City of West Palm Beach, Florida: 1995
- CBC Master Plan, Ventura, California: 1995
- Thayer Street Master Plan, Brown University, Providence, Rhode Island: 1994
- Master Planning Study, (McKenna Associates lead), Bay City, Michigan: 1993



Woodfield, Michigan



Howell Town Center, Michigan

Neo-Traditional Town Planning

- Fallen Timbers, Marietta, Ohio: 2017
- The Village at Grand Traverse Commons: 2014
- Village of Interlochen Gateway Master Plan, Michigan: 2011
- Mixson Town Center, North Charleston, South Carolina: 2008
- Town Center Study, Saugatuck, Michigan: 2008
- City of Downey, California: 2008
- Lake Hutto, Florida: 2008
- Lake Toho, Florida: 2008
- Clarksburg Town Center, Clarksburg, Maryland: 2008
- Lacey Gateway, Lacey, Washington: 2007
- Missoula Town Center, Missoula, Montana: 2007

Noah's Ark Town Center, St. Charles, Missouri: 2007
 Tuxedo Town Center, Tuxedo, New York: 2007
 Lacey Gateway, Lacey, Washington: 2007
 Water's Edge Town Center, Athens, Georgia: 2006
 North Carolina Research Campus, Kannapolis, North Carolina: 2006
 Rouzan Town Center, Baton Rouge, Louisiana: 2006
 Houston, Texas, Proposed Town Center: 2006*
 Santa Ana Town Center, Albuquerque, New Mexico: 2006*
 Erie Canal Town Center, Rochester, New York: 2005-2006
 San Elijo Hills Town Center, San Marcos, California: 2005*
 East Fraserlands Town Center, Vancouver, BC: 2005
 Leeland Station, Virginia: 2005
 City of Carmel Town Center, Carmel, Indiana: 2005
 Evening Rose Town Center, Tallahassee, Florida: 2005
 Domino's Farms General Master Plan: 2004
 Treasure Coast Regional Plan, Florida: 2004*
 Lorna Stone, Rochester Hills, Michigan: 2003
 University Place Town Center, University Place, Washington State: 2003
 Domino's Farms Town Center, Ann Arbor, Michigan: 2002
 The Glen Town Center, Glenview, Illinois: 2002
 Village of Rochester Hills Town Center, Rochester Hills, Michigan: 2002
 Rosemary Beach, Florida, Town Center Study: 2002
 Baldwin Town Center, Grand Blanc, Michigan: 2002
 BTS Town Center, Lansing, Michigan: 2001
 The Hamlet, Canton, Michigan: 2001
 Acme Town Center, Acme Township, Michigan: 2001
 Nixon Road Town Center, Ann Arbor, Michigan: 2001
 Prairie Crossings Town Center, Chicago, Illinois: 2001
 Asher Village, Linden, Michigan: 2001
 Regional Town Center, Draper, Utah: 2001
 Coffee Creek Town Center, Chesterton, Indiana: 2001
 Multiple Town Center Master Planning, Draper, Utah: 2000
 Coconut Point Town Center/ The Simon Company, Bonita Springs, Florida: 2000
 Glenview Town Center, Glenview, Illinois: 2000
 Eton Street Station Master Plan, Birmingham, Michigan: 2000
 Shelby Town Center, Shelby Township, Michigan: 2000
 Analysis and Zoning Review, Bay City, Michigan: 1999
 Master Landscape Plan, Cherry Hill Village, Michigan: 1999
 San Elijo Village Center Master Plan, San Diego, California: 1999
 Mt. Laurel Village Center Master Plan (DPZ lead), Birmingham, Alabama: 1998
 Northwest Landing Town Center (Calthorpe Associates lead) Dupont, Washington: 1998
 Town Commons 60 acre TND, Howell, Michigan: 1998
 Washington Village Master Plan, Washington Township, Michigan: 1998
 Heritage Village Master Plan & Landscape Plan, Waterford Township, Michigan: 1997
 Westwood Village Master Plan & Landscape Plan, Beverly Hills, Michigan: 1996-1997
 Kentland's Town Center expansion Master Plan (DPZ lead), Gaithersburg, Maryland: 1996
 Aberdeen Town Center, Valparaiso, Indiana: 1995
 Mayfield Park Village Master Plan, Mayfield Township, Michigan: 1995
 The Vistas Master Plan & PUD approval, Novi, Michigan: 1993
 Woodside Village 800-acre Master Plan, Grand Blanc, Michigan: 1991



Middleton Hills,
Wisconsin

University Planning

University of Miami Medical District, Miami, Florida: 2008
 Hendrix College, Conway, Arkansas: 2008
 University of Connecticut Town Center Plan, Storrs, Connecticut: 2004
 Michigan State University, East Lansing, Michigan: 2003
 Downtown Study, Illinois State University, Normal, Illinois: 2000
 High Street Master Plan, Ohio State University, Columbus, Ohio: 1998
 State Street Master Plan, University of Wisconsin, Madison, Wisconsin: 1998
 Adaptive Re-Use Study, John Hopkins University, Baltimore, Maryland: 1996
 42nd Street Master Planning Study, University of Pennsylvania, Philadelphia, Pennsylvania: 1996
 Walnut Street Master Planning Study, University of Pennsylvania, Philadelphia, Pennsylvania: 1996
 Thayer Street Master Plan, Brown University, Providence, Rhode Island: 1994



U. Pennsylvania